



CRESTONE PEAK
RESOURCES

SECTION DETAILS

Sec	MD	Inc	Azi	TVD	+N/-S	+E/-W	Dleg	TFace	VSec	Target
1	0.00	0.00	0.00	0.00	0.00	0.00	0.00	0.00	0.00	
2	300.00	0.00	0.00	300.00	0.00	0.00	0.00	0.00	0.00	
3	723.71	8.47	30.08	722.17	27.07	15.67	2.00	30.08	-26.29	
4	6805.69	8.47	30.08	6737.75	802.66	464.84	0.00	0.00	-779.57	
5	8022.24	90.00	179.97	7543.00	92.34	525.41	8.00	149.62	-67.17	DREAM WEAVER South 3J-21H-N268 TPZ
6	19242.38	90.00	179.97	7543.00-11127.79	531.53	0.00	0.00	11140.48		DREAM WEAVER South 3J-21H-N268 BHL

PLAN #2
DREAM WEAVER South 3J-21H-N268

23 KB @ 4924.00usft

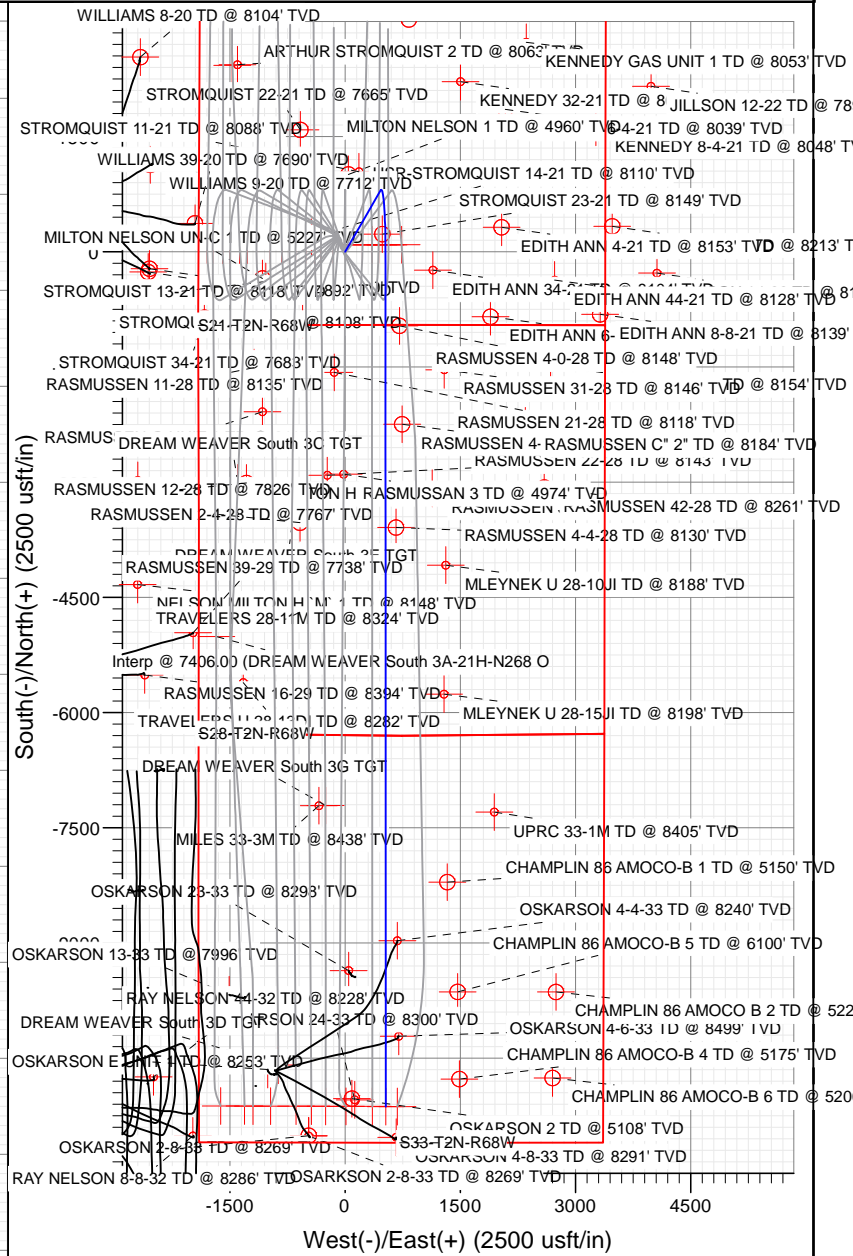
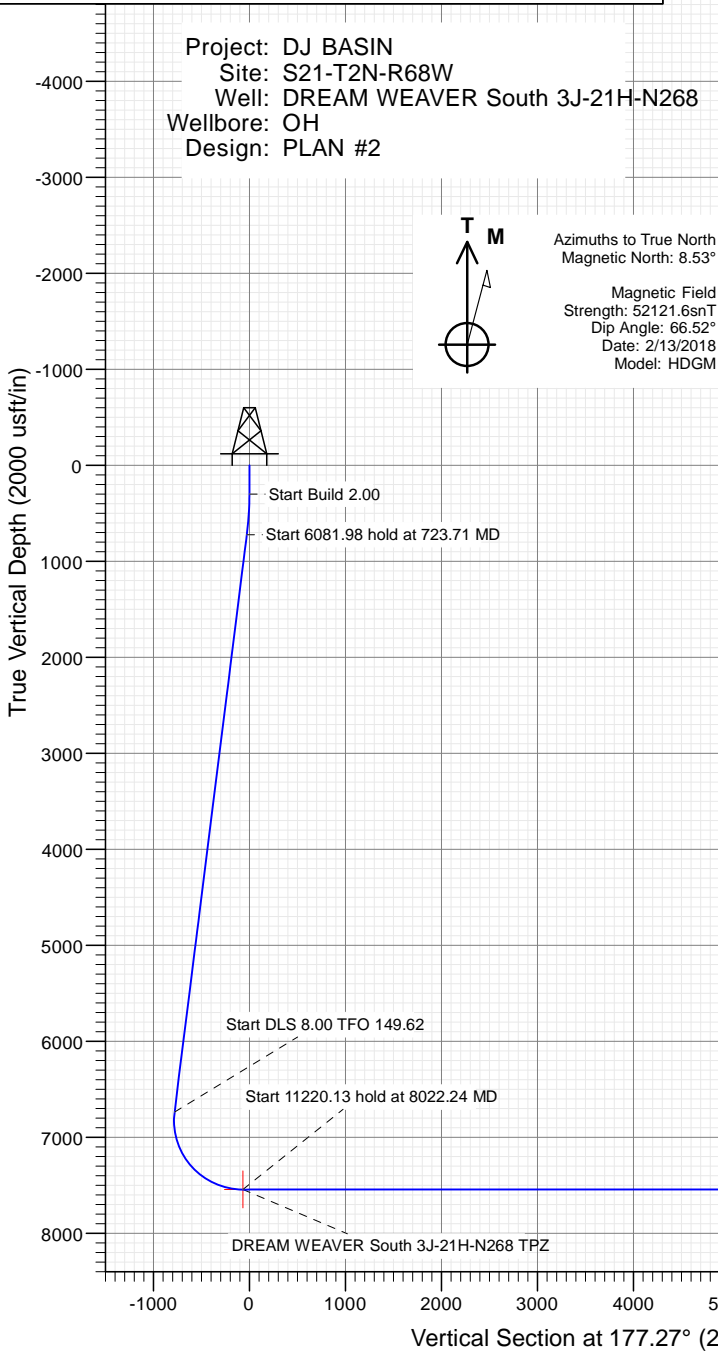
Ground Level @ 4901.00

North American Datum 1983

Well DREAM WEAVER South 3J-21H-N268 - Slot DREAM WEAVER South 3J-21H-N268 SHL, True North

Type	Target	Azimuth	Origin	Type	N/S	E/W	From	TVD
TD	No Target (Freehand)	177.27	Slot	0.00	0.00	0.00	0.00	0.00
Name		TVD	+N/-S	+E/-W	Latitude	Longitude		
DREAM WEAVER South 3J-21H-N268 BHL		7543.00	-11127.79	531.53	40.089502	-105.009016		
DREAM WEAVER South 3J-21H-N268 TPZ		7543.00	92.34	525.41	40.119755	-105.009016		

Project: DJ BASIN
Site: S21-T2N-R68W
Well: DREAM WEAVER South 3J-21H-N268
Wellbore: OH
Design: PLAN #2



WELL DETAILS: DREAM WEAVER South 3J-21H-N268

+N/-S	+E/-W	Northing	Easting	Latitude	Longitude
0.00	0.00	1286755.63	3136783.79	40.119502	-105.009016

CATHEDRAL



Cathedral Energy Services

Planning Report

Database:	USA EDM 5000 Multi Users DB	Local Co-ordinate Reference:	Well DREAM WEAVER South 3J-21H-N268 - SI
Company:	Crestone Peak Resources	TVD Reference:	23' KB @ 4924.00usft
Project:	DJ BASIN	MD Reference:	23' KB @ 4924.00usft
Site:	S21-T2N-R68W	North Reference:	True
Well:	DREAM WEAVER South 3J-21H-N268	Survey Calculation Method:	Minimum Curvature
Wellbore:	OH		
Design:	PLAN #2		

Project	DJ BASIN		
Map System:	US State Plane 1983	System Datum:	Mean Sea Level
Geo Datum:	North American Datum 1983		
Map Zone:	Colorado Northern Zone		

Site		S21-T2N-R68W			
Site Position:		Northing:	1,286,960.17 usft	Latitude:	40.120065
From:	Lat/Long	Easting:	3,136,653.11 usft	Longitude:	-105.011358
Position Uncertainty:	0.00 usft	Slot Radius:	13-3/16 "	Grid Convergence:	0.32 °

Well	DREAM WEAVER South 3J-21H-N268 - Slot DREAM WEAVER South 3J-21H-N268 SHL					
Well Position	+N/-S	0.00 usft	Northing:	1,286,755.63 usft	Latitude:	40.119502
	+E/-W	0.00 usft	Easting:	3,136,783.79 usft	Longitude:	-105.010895
Position Uncertainty		0.00 usft	Wellhead Elevation:	usft	Ground Level:	4,901.00 usft

Wellbore	OH				
Magnetics	Model Name	Sample Date	Declination	Dip Angle	Field Strength
			(°)	(°)	(nT)
	HDGM	2/13/2018	8.53	66.52	52,121.60000000

Design	PLAN #2			
Audit Notes:				
Version:	Phase:	PLAN	Tie On Depth:	0.00
Vertical Section:	Depth From (TVD)	+N/-S	+E/-W	Direction
	(usft)	(usft)	(usft)	(°)
	0.00	0.00	0.00	177.27

Plan Sections										
Measured Depth (usft)	Inclination (°)	Azimuth (°)	Vertical Depth (usft)	+N/-S (usft)	+E/-W (usft)	Dogleg Rate (°/100usft)	Build Rate (°/100usft)	Turn Rate (°/100usft)	TFO (°)	Target
0.00	0.00	0.00	0.00	0.00	0.00	0.00	0.00	0.00	0.00	
300.00	0.00	0.00	300.00	0.00	0.00	0.00	0.00	0.00	0.00	
723.71	8.47	30.08	722.17	27.07	15.67	2.00	2.00	0.00	30.08	
6,805.69	8.47	30.08	6,737.75	802.66	464.84	0.00	0.00	0.00	0.00	
8,022.24	90.00	179.97	7,543.00	92.34	525.41	8.00	6.70	12.32	149.62	DREAM WEAVER So
19,242.38	90.00	179.97	7,543.00	-11,127.79	531.53	0.00	0.00	0.00	0.00	DREAM WEAVER So

Cathedral Energy Services

Planning Report

Database:	USA EDM 5000 Multi Users DB	Local Co-ordinate Reference:	Well DREAM WEAVER South 3J-21H-N268 - SI
Company:	Crestone Peak Resources	TVD Reference:	23' KB @ 4924.00usft
Project:	DJ BASIN	MD Reference:	23' KB @ 4924.00usft
Site:	S21-T2N-R68W	North Reference:	True
Well:	DREAM WEAVER South 3J-21H-N268	Survey Calculation Method:	Minimum Curvature
Wellbore:	OH		
Design:	PLAN #2		

Planned Survey									
Measured Depth (usft)	Inclination (°)	Azimuth (°)	Vertical Depth (usft)	+N/-S (usft)	+E/-W (usft)	Vertical Section (usft)	Dogleg Rate (°/100usft)	Build Rate (°/100u)	Comments / Formations
0.00	0.00	0.00	0.00	0.00	0.00	0.00	0.00	0.00	
100.00	0.00	0.00	100.00	0.00	0.00	0.00	0.00	0.00	
200.00	0.00	0.00	200.00	0.00	0.00	0.00	0.00	0.00	
300.00	0.00	0.00	300.00	0.00	0.00	0.00	0.00	0.00	
400.00	2.00	30.08	399.98	1.51	0.87	-1.47	2.00	2.00	
500.00	4.00	30.08	499.84	6.04	3.50	-5.87	2.00	2.00	
600.00	6.00	30.08	599.45	13.58	7.86	-13.19	2.00	2.00	
700.00	8.00	30.08	698.70	24.13	13.97	-23.43	2.00	2.00	
723.71	8.47	30.08	722.17	27.07	15.67	-26.29	2.00	2.00	
800.00	8.47	30.08	797.62	36.79	21.31	-35.74	0.00	0.00	
900.00	8.47	30.08	896.53	49.55	28.69	-48.12	0.00	0.00	
1,000.00	8.47	30.08	995.44	62.30	36.08	-60.51	0.00	0.00	
1,100.00	8.47	30.08	1,094.35	75.05	43.46	-72.89	0.00	0.00	
1,200.00	8.47	30.08	1,193.26	87.80	50.85	-85.28	0.00	0.00	
1,300.00	8.47	30.08	1,292.17	100.56	58.23	-97.66	0.00	0.00	
1,400.00	8.47	30.08	1,391.07	113.31	65.62	-110.05	0.00	0.00	
1,500.00	8.47	30.08	1,489.98	126.06	73.01	-122.43	0.00	0.00	
1,600.00	8.47	30.08	1,588.89	138.81	80.39	-134.82	0.00	0.00	
1,700.00	8.47	30.08	1,687.80	151.57	87.78	-147.21	0.00	0.00	
1,800.00	8.47	30.08	1,786.71	164.32	95.16	-159.59	0.00	0.00	
1,900.00	8.47	30.08	1,885.61	177.07	102.55	-171.98	0.00	0.00	
2,000.00	8.47	30.08	1,984.52	189.82	109.93	-184.36	0.00	0.00	
2,100.00	8.47	30.08	2,083.43	202.58	117.32	-196.75	0.00	0.00	
2,200.00	8.47	30.08	2,182.34	215.33	124.70	-209.13	0.00	0.00	
2,300.00	8.47	30.08	2,281.25	228.08	132.09	-221.52	0.00	0.00	
2,400.00	8.47	30.08	2,380.16	240.83	139.47	-233.90	0.00	0.00	
2,500.00	8.47	30.08	2,479.06	253.59	146.86	-246.29	0.00	0.00	
2,600.00	8.47	30.08	2,577.97	266.34	154.24	-258.68	0.00	0.00	
2,700.00	8.47	30.08	2,676.88	279.09	161.63	-271.06	0.00	0.00	
2,800.00	8.47	30.08	2,775.79	291.84	169.01	-283.45	0.00	0.00	
2,900.00	8.47	30.08	2,874.70	304.59	176.40	-295.83	0.00	0.00	
3,000.00	8.47	30.08	2,973.60	317.35	183.78	-308.22	0.00	0.00	
3,100.00	8.47	30.08	3,072.51	330.10	191.17	-320.60	0.00	0.00	
3,200.00	8.47	30.08	3,171.42	342.85	198.55	-332.99	0.00	0.00	
3,300.00	8.47	30.08	3,270.33	355.60	205.94	-345.37	0.00	0.00	
3,400.00	8.47	30.08	3,369.24	368.36	213.32	-357.76	0.00	0.00	
3,500.00	8.47	30.08	3,468.15	381.11	220.71	-370.15	0.00	0.00	
3,600.00	8.47	30.08	3,567.05	393.86	228.10	-382.53	0.00	0.00	
3,700.00	8.47	30.08	3,665.96	406.61	235.48	-394.92	0.00	0.00	
3,800.00	8.47	30.08	3,764.87	419.37	242.87	-407.30	0.00	0.00	
3,900.00	8.47	30.08	3,863.78	432.12	250.25	-419.69	0.00	0.00	
4,000.00	8.47	30.08	3,962.69	444.87	257.64	-432.07	0.00	0.00	
4,100.00	8.47	30.08	4,061.60	457.62	265.02	-444.46	0.00	0.00	
4,200.00	8.47	30.08	4,160.50	470.38	272.41	-456.84	0.00	0.00	
4,300.00	8.47	30.08	4,259.41	483.13	279.79	-469.23	0.00	0.00	
4,400.00	8.47	30.08	4,358.32	495.88	287.18	-481.62	0.00	0.00	
4,500.00	8.47	30.08	4,457.23	508.63	294.56	-494.00	0.00	0.00	
4,600.00	8.47	30.08	4,556.14	521.39	301.95	-506.39	0.00	0.00	
4,700.00	8.47	30.08	4,655.04	534.14	309.33	-518.77	0.00	0.00	
4,800.00	8.47	30.08	4,753.95	546.89	316.72	-531.16	0.00	0.00	
4,900.00	8.47	30.08	4,852.86	559.64	324.10	-543.54	0.00	0.00	
5,000.00	8.47	30.08	4,951.77	572.39	331.49	-555.93	0.00	0.00	

Cathedral Energy Services

Planning Report

Database:	USA EDM 5000 Multi Users DB	Local Co-ordinate Reference:	Well DREAM WEAVER South 3J-21H-N268 - SI
Company:	Crestone Peak Resources	TVD Reference:	23' KB @ 4924.00usft
Project:	DJ BASIN	MD Reference:	23' KB @ 4924.00usft
Site:	S21-T2N-R68W	North Reference:	True
Well:	DREAM WEAVER South 3J-21H-N268	Survey Calculation Method:	Minimum Curvature
Wellbore:	OH		
Design:	PLAN #2		

Planned Survey									
Measured Depth (usft)	Inclination (°)	Azimuth (°)	Vertical Depth (usft)	+N/-S (usft)	+E/-W (usft)	Vertical Section (usft)	Dogleg Rate (°/100usft)	Build Rate (°/100u)	Comments / Formations
5,100.00	8.47	30.08	5,050.68	585.15	338.87	-568.31	0.00	0.00	
5,200.00	8.47	30.08	5,149.59	597.90	346.26	-580.70	0.00	0.00	
5,300.00	8.47	30.08	5,248.49	610.65	353.64	-593.09	0.00	0.00	
5,400.00	8.47	30.08	5,347.40	623.40	361.03	-605.47	0.00	0.00	
5,500.00	8.47	30.08	5,446.31	636.16	368.42	-617.86	0.00	0.00	
5,600.00	8.47	30.08	5,545.22	648.91	375.80	-630.24	0.00	0.00	
5,700.00	8.47	30.08	5,644.13	661.66	383.19	-642.63	0.00	0.00	
5,800.00	8.47	30.08	5,743.03	674.41	390.57	-655.01	0.00	0.00	
5,900.00	8.47	30.08	5,841.94	687.17	397.96	-667.40	0.00	0.00	
6,000.00	8.47	30.08	5,940.85	699.92	405.34	-679.78	0.00	0.00	
6,100.00	8.47	30.08	6,039.76	712.67	412.73	-692.17	0.00	0.00	
6,200.00	8.47	30.08	6,138.67	725.42	420.11	-704.56	0.00	0.00	
6,300.00	8.47	30.08	6,237.58	738.18	427.50	-716.94	0.00	0.00	
6,400.00	8.47	30.08	6,336.48	750.93	434.88	-729.33	0.00	0.00	
6,500.00	8.47	30.08	6,435.39	763.68	442.27	-741.71	0.00	0.00	
6,600.00	8.47	30.08	6,534.30	776.43	449.65	-754.10	0.00	0.00	
6,700.00	8.47	30.08	6,633.21	789.19	457.04	-766.48	0.00	0.00	
6,800.00	8.47	30.08	6,732.12	801.94	464.42	-778.87	0.00	0.00	
6,805.69	8.47	30.08	6,737.75	802.66	464.84	-779.57	0.00	0.00	
6,900.00	4.28	92.93	6,831.54	808.51	471.85	-785.07	8.00	-4.45	
7,000.00	9.26	152.68	6,930.91	801.16	479.28	-777.38	8.00	4.98	
7,100.00	16.76	165.60	7,028.30	780.01	486.57	-755.91	8.00	7.50	
7,200.00	24.57	170.56	7,121.80	745.48	493.58	-721.08	8.00	7.81	
7,300.00	32.47	173.22	7,209.59	698.23	500.17	-673.58	8.00	7.90	
7,400.00	40.41	174.93	7,289.98	639.20	506.21	-614.32	8.00	7.94	
7,500.00	48.36	176.16	7,361.39	569.51	511.58	-544.46	8.00	7.95	
7,600.00	56.33	177.11	7,422.43	490.54	516.19	-465.36	8.00	7.96	
7,700.00	64.30	177.91	7,471.92	403.82	519.93	-378.56	8.00	7.97	
7,800.00	72.27	178.60	7,508.89	311.03	522.74	-285.74	8.00	7.97	
7,900.00	80.25	179.23	7,532.62	213.99	524.57	-188.72	8.00	7.98	
8,000.00	88.23	179.84	7,542.66	114.58	525.38	-89.39	8.00	7.98	
8,022.24	90.00	179.97	7,543.00	92.34	525.41	-67.17	8.00	7.98	DREAM WEAVER South 3J-21H-N268 TPZ
8,100.00	90.00	179.97	7,543.00	14.59	525.46	10.50	0.00	0.00	
8,200.00	90.00	179.97	7,543.00	-85.41	525.51	110.39	0.00	0.00	
8,300.00	90.00	179.97	7,543.00	-185.41	525.56	210.28	0.00	0.00	
8,400.00	90.00	179.97	7,543.00	-285.41	525.62	310.16	0.00	0.00	
8,500.00	90.00	179.97	7,543.00	-385.41	525.67	410.05	0.00	0.00	
8,600.00	90.00	179.97	7,543.00	-485.41	525.73	509.94	0.00	0.00	
8,700.00	90.00	179.97	7,543.00	-585.41	525.78	609.83	0.00	0.00	
8,800.00	90.00	179.97	7,543.00	-685.41	525.84	709.72	0.00	0.00	
8,900.00	90.00	179.97	7,543.00	-785.41	525.89	809.61	0.00	0.00	
9,000.00	90.00	179.97	7,543.00	-885.41	525.95	909.50	0.00	0.00	
9,100.00	90.00	179.97	7,543.00	-985.41	526.00	1,009.39	0.00	0.00	
9,200.00	90.00	179.97	7,543.00	-1,085.41	526.06	1,109.27	0.00	0.00	
9,300.00	90.00	179.97	7,543.00	-1,185.41	526.11	1,209.16	0.00	0.00	
9,400.00	90.00	179.97	7,543.00	-1,285.41	526.16	1,309.05	0.00	0.00	
9,500.00	90.00	179.97	7,543.00	-1,385.41	526.22	1,408.94	0.00	0.00	
9,600.00	90.00	179.97	7,543.00	-1,485.41	526.27	1,508.83	0.00	0.00	
9,700.00	90.00	179.97	7,543.00	-1,585.41	526.33	1,608.72	0.00	0.00	
9,800.00	90.00	179.97	7,543.00	-1,685.41	526.38	1,708.61	0.00	0.00	
9,900.00	90.00	179.97	7,543.00	-1,785.41	526.44	1,808.50	0.00	0.00	
10,000.00	90.00	179.97	7,543.00	-1,885.41	526.49	1,908.38	0.00	0.00	

Cathedral Energy Services

Planning Report

Database:	USA EDM 5000 Multi Users DB	Local Co-ordinate Reference:	Well DREAM WEAVER South 3J-21H-N268 - SI
Company:	Crestone Peak Resources	TVD Reference:	23' KB @ 4924.00usft
Project:	DJ BASIN	MD Reference:	23' KB @ 4924.00usft
Site:	S21-T2N-R68W	North Reference:	True
Well:	DREAM WEAVER South 3J-21H-N268	Survey Calculation Method:	Minimum Curvature
Wellbore:	OH		
Design:	PLAN #2		

Planned Survey

Measured Depth (usft)	Inclination (°)	Azimuth (°)	Vertical Depth (usft)	+N/-S (usft)	+E/-W (usft)	Vertical Section (usft)	Dogleg Rate (°/100usft)	Build Rate (°/100u)	Comments / Formations
10,100.00	90.00	179.97	7,543.00	-1,985.41	526.55	2,008.27	0.00	0.00	
10,200.00	90.00	179.97	7,543.00	-2,085.41	526.60	2,108.16	0.00	0.00	
10,300.00	90.00	179.97	7,543.00	-2,185.41	526.65	2,208.05	0.00	0.00	
10,400.00	90.00	179.97	7,543.00	-2,285.41	526.71	2,307.94	0.00	0.00	
10,500.00	90.00	179.97	7,543.00	-2,385.41	526.76	2,407.83	0.00	0.00	
10,600.00	90.00	179.97	7,543.00	-2,485.41	526.82	2,507.72	0.00	0.00	
10,700.00	90.00	179.97	7,543.00	-2,585.41	526.87	2,607.61	0.00	0.00	
10,800.00	90.00	179.97	7,543.00	-2,685.41	526.93	2,707.49	0.00	0.00	
10,900.00	90.00	179.97	7,543.00	-2,785.41	526.98	2,807.38	0.00	0.00	
11,000.00	90.00	179.97	7,543.00	-2,885.41	527.04	2,907.27	0.00	0.00	
11,100.00	90.00	179.97	7,543.00	-2,985.41	527.09	3,007.16	0.00	0.00	
11,200.00	90.00	179.97	7,543.00	-3,085.41	527.14	3,107.05	0.00	0.00	
11,300.00	90.00	179.97	7,543.00	-3,185.41	527.20	3,206.94	0.00	0.00	
11,400.00	90.00	179.97	7,543.00	-3,285.41	527.25	3,306.83	0.00	0.00	
11,500.00	90.00	179.97	7,543.00	-3,385.41	527.31	3,406.72	0.00	0.00	
11,600.00	90.00	179.97	7,543.00	-3,485.41	527.36	3,506.60	0.00	0.00	
11,700.00	90.00	179.97	7,543.00	-3,585.41	527.42	3,606.49	0.00	0.00	
11,800.00	90.00	179.97	7,543.00	-3,685.41	527.47	3,706.38	0.00	0.00	
11,900.00	90.00	179.97	7,543.00	-3,785.41	527.53	3,806.27	0.00	0.00	
12,000.00	90.00	179.97	7,543.00	-3,885.41	527.58	3,906.16	0.00	0.00	
12,100.00	90.00	179.97	7,543.00	-3,985.41	527.64	4,006.05	0.00	0.00	
12,200.00	90.00	179.97	7,543.00	-4,085.41	527.69	4,105.94	0.00	0.00	
12,300.00	90.00	179.97	7,543.00	-4,185.41	527.74	4,205.82	0.00	0.00	
12,400.00	90.00	179.97	7,543.00	-4,285.41	527.80	4,305.71	0.00	0.00	
12,500.00	90.00	179.97	7,543.00	-4,385.41	527.85	4,405.60	0.00	0.00	
12,600.00	90.00	179.97	7,543.00	-4,485.41	527.91	4,505.49	0.00	0.00	
12,700.00	90.00	179.97	7,543.00	-4,585.41	527.96	4,605.38	0.00	0.00	
12,800.00	90.00	179.97	7,543.00	-4,685.41	528.02	4,705.27	0.00	0.00	
12,900.00	90.00	179.97	7,543.00	-4,785.41	528.07	4,805.16	0.00	0.00	
13,000.00	90.00	179.97	7,543.00	-4,885.41	528.13	4,905.05	0.00	0.00	
13,100.00	90.00	179.97	7,543.00	-4,985.41	528.18	5,004.93	0.00	0.00	
13,200.00	90.00	179.97	7,543.00	-5,085.41	528.23	5,104.82	0.00	0.00	
13,300.00	90.00	179.97	7,543.00	-5,185.41	528.29	5,204.71	0.00	0.00	
13,400.00	90.00	179.97	7,543.00	-5,285.41	528.34	5,304.60	0.00	0.00	
13,500.00	90.00	179.97	7,543.00	-5,385.41	528.40	5,404.49	0.00	0.00	
13,600.00	90.00	179.97	7,543.00	-5,485.41	528.45	5,504.38	0.00	0.00	
13,700.00	90.00	179.97	7,543.00	-5,585.41	528.51	5,604.27	0.00	0.00	
13,800.00	90.00	179.97	7,543.00	-5,685.41	528.56	5,704.16	0.00	0.00	
13,900.00	90.00	179.97	7,543.00	-5,785.41	528.62	5,804.04	0.00	0.00	
14,000.00	90.00	179.97	7,543.00	-5,885.41	528.67	5,903.93	0.00	0.00	
14,100.00	90.00	179.97	7,543.00	-5,985.41	528.72	6,003.82	0.00	0.00	
14,200.00	90.00	179.97	7,543.00	-6,085.41	528.78	6,103.71	0.00	0.00	
14,300.00	90.00	179.97	7,543.00	-6,185.41	528.83	6,203.60	0.00	0.00	
14,400.00	90.00	179.97	7,543.00	-6,285.41	528.89	6,303.49	0.00	0.00	
14,500.00	90.00	179.97	7,543.00	-6,385.41	528.94	6,403.38	0.00	0.00	
14,600.00	90.00	179.97	7,543.00	-6,485.41	529.00	6,503.27	0.00	0.00	
14,700.00	90.00	179.97	7,543.00	-6,585.41	529.05	6,603.15	0.00	0.00	
14,800.00	90.00	179.97	7,543.00	-6,685.41	529.11	6,703.04	0.00	0.00	
14,900.00	90.00	179.97	7,543.00	-6,785.41	529.16	6,802.93	0.00	0.00	
15,000.00	90.00	179.97	7,543.00	-6,885.41	529.22	6,902.82	0.00	0.00	
15,100.00	90.00	179.97	7,543.00	-6,985.41	529.27	7,002.71	0.00	0.00	
15,200.00	90.00	179.97	7,543.00	-7,085.41	529.32	7,102.60	0.00	0.00	

Cathedral Energy Services

Planning Report

Database:	USA EDM 5000 Multi Users DB	Local Co-ordinate Reference:	Well DREAM WEAVER South 3J-21H-N268 - SI
Company:	Crestone Peak Resources	TVD Reference:	23' KB @ 4924.00usft
Project:	DJ BASIN	MD Reference:	23' KB @ 4924.00usft
Site:	S21-T2N-R68W	North Reference:	True
Well:	DREAM WEAVER South 3J-21H-N268	Survey Calculation Method:	Minimum Curvature
Wellbore:	OH		
Design:	PLAN #2		

Planned Survey									
Measured Depth (usft)	Inclination (°)	Azimuth (°)	Vertical Depth (usft)	+N/-S (usft)	+E/-W (usft)	Vertical Section (usft)	Dogleg Rate (°/100usft)	Build Rate (°/100u)	Comments / Formations
15,300.00	90.00	179.97	7,543.00	-7,185.41	529.38	7,202.49	0.00	0.00	
15,400.00	90.00	179.97	7,543.00	-7,285.41	529.43	7,302.38	0.00	0.00	
15,500.00	90.00	179.97	7,543.00	-7,385.41	529.49	7,402.26	0.00	0.00	
15,600.00	90.00	179.97	7,543.00	-7,485.41	529.54	7,502.15	0.00	0.00	
15,700.00	90.00	179.97	7,543.00	-7,585.41	529.60	7,602.04	0.00	0.00	
15,800.00	90.00	179.97	7,543.00	-7,685.41	529.65	7,701.93	0.00	0.00	
15,900.00	90.00	179.97	7,543.00	-7,785.41	529.71	7,801.82	0.00	0.00	
16,000.00	90.00	179.97	7,543.00	-7,885.41	529.76	7,901.71	0.00	0.00	
16,100.00	90.00	179.97	7,543.00	-7,985.41	529.81	8,001.60	0.00	0.00	
16,200.00	90.00	179.97	7,543.00	-8,085.41	529.87	8,101.49	0.00	0.00	
16,300.00	90.00	179.97	7,543.00	-8,185.41	529.92	8,201.37	0.00	0.00	
16,400.00	90.00	179.97	7,543.00	-8,285.41	529.98	8,301.26	0.00	0.00	
16,500.00	90.00	179.97	7,543.00	-8,385.41	530.03	8,401.15	0.00	0.00	
16,600.00	90.00	179.97	7,543.00	-8,485.41	530.09	8,501.04	0.00	0.00	
16,700.00	90.00	179.97	7,543.00	-8,585.41	530.14	8,600.93	0.00	0.00	
16,800.00	90.00	179.97	7,543.00	-8,685.41	530.20	8,700.82	0.00	0.00	
16,900.00	90.00	179.97	7,543.00	-8,785.41	530.25	8,800.71	0.00	0.00	
17,000.00	90.00	179.97	7,543.00	-8,885.41	530.31	8,900.59	0.00	0.00	
17,100.00	90.00	179.97	7,543.00	-8,985.41	530.36	9,000.48	0.00	0.00	
17,200.00	90.00	179.97	7,543.00	-9,085.41	530.41	9,100.37	0.00	0.00	
17,300.00	90.00	179.97	7,543.00	-9,185.41	530.47	9,200.26	0.00	0.00	
17,400.00	90.00	179.97	7,543.00	-9,285.41	530.52	9,300.15	0.00	0.00	
17,500.00	90.00	179.97	7,543.00	-9,385.41	530.58	9,400.04	0.00	0.00	
17,600.00	90.00	179.97	7,543.00	-9,485.41	530.63	9,499.93	0.00	0.00	
17,700.00	90.00	179.97	7,543.00	-9,585.41	530.69	9,599.82	0.00	0.00	
17,800.00	90.00	179.97	7,543.00	-9,685.41	530.74	9,699.70	0.00	0.00	
17,900.00	90.00	179.97	7,543.00	-9,785.41	530.80	9,799.59	0.00	0.00	
18,000.00	90.00	179.97	7,543.00	-9,885.41	530.85	9,899.48	0.00	0.00	
18,100.00	90.00	179.97	7,543.00	-9,985.41	530.90	9,999.37	0.00	0.00	
18,200.00	90.00	179.97	7,543.00	-10,085.41	530.96	10,099.26	0.00	0.00	
18,300.00	90.00	179.97	7,543.00	-10,185.41	531.01	10,199.15	0.00	0.00	
18,400.00	90.00	179.97	7,543.00	-10,285.41	531.07	10,299.04	0.00	0.00	
18,500.00	90.00	179.97	7,543.00	-10,385.41	531.12	10,398.93	0.00	0.00	
18,600.00	90.00	179.97	7,543.00	-10,485.41	531.18	10,498.81	0.00	0.00	
18,700.00	90.00	179.97	7,543.00	-10,585.41	531.23	10,598.70	0.00	0.00	
18,800.00	90.00	179.97	7,543.00	-10,685.41	531.29	10,698.59	0.00	0.00	
18,900.00	90.00	179.97	7,543.00	-10,785.41	531.34	10,798.48	0.00	0.00	
19,000.00	90.00	179.97	7,543.00	-10,885.41	531.39	10,898.37	0.00	0.00	
19,100.00	90.00	179.97	7,543.00	-10,985.41	531.45	10,998.26	0.00	0.00	
19,200.00	90.00	179.97	7,543.00	-11,085.41	531.50	11,098.15	0.00	0.00	
19,242.38	90.00	179.97	7,543.00	-11,127.79	531.53	11,140.48	0.00	0.00	DREAM WEAVER South 3J-21H-N268 BHL

Cathedral Energy Services

Planning Report

Database:	USA EDM 5000 Multi Users DB	Local Co-ordinate Reference:	Well DREAM WEAVER South 3J-21H-N268 - SI
Company:	Crestone Peak Resources	TVD Reference:	23' KB @ 4924.00usft
Project:	DJ BASIN	MD Reference:	23' KB @ 4924.00usft
Site:	S21-T2N-R68W	North Reference:	True
Well:	DREAM WEAVER South 3J-21H-N268	Survey Calculation Method:	Minimum Curvature
Wellbore:	OH		
Design:	PLAN #2		

Targets									
Target Name									
- hit/miss target	Dip Angle	Dip Dir.	TVD	+N/-S	+E/-W	Northing	Easting	Latitude	Longitude
- Shape	(°)	(°)	(usft)	(usft)	(usft)	(usft)	(usft)		
DREAM WEAVER South	0.00	0.00	7,543.00	92.34	525.41	1,286,850.87	3,137,308.69	40.119755	-105.009016
- plan hits target center									
- Point									
DREAM WEAVER South	0.00	0.00	7,543.00	-11,127.79	531.53	1,275,630.94	3,137,376.69	40.088954	-105.008995
- plan hits target center									
- Point									