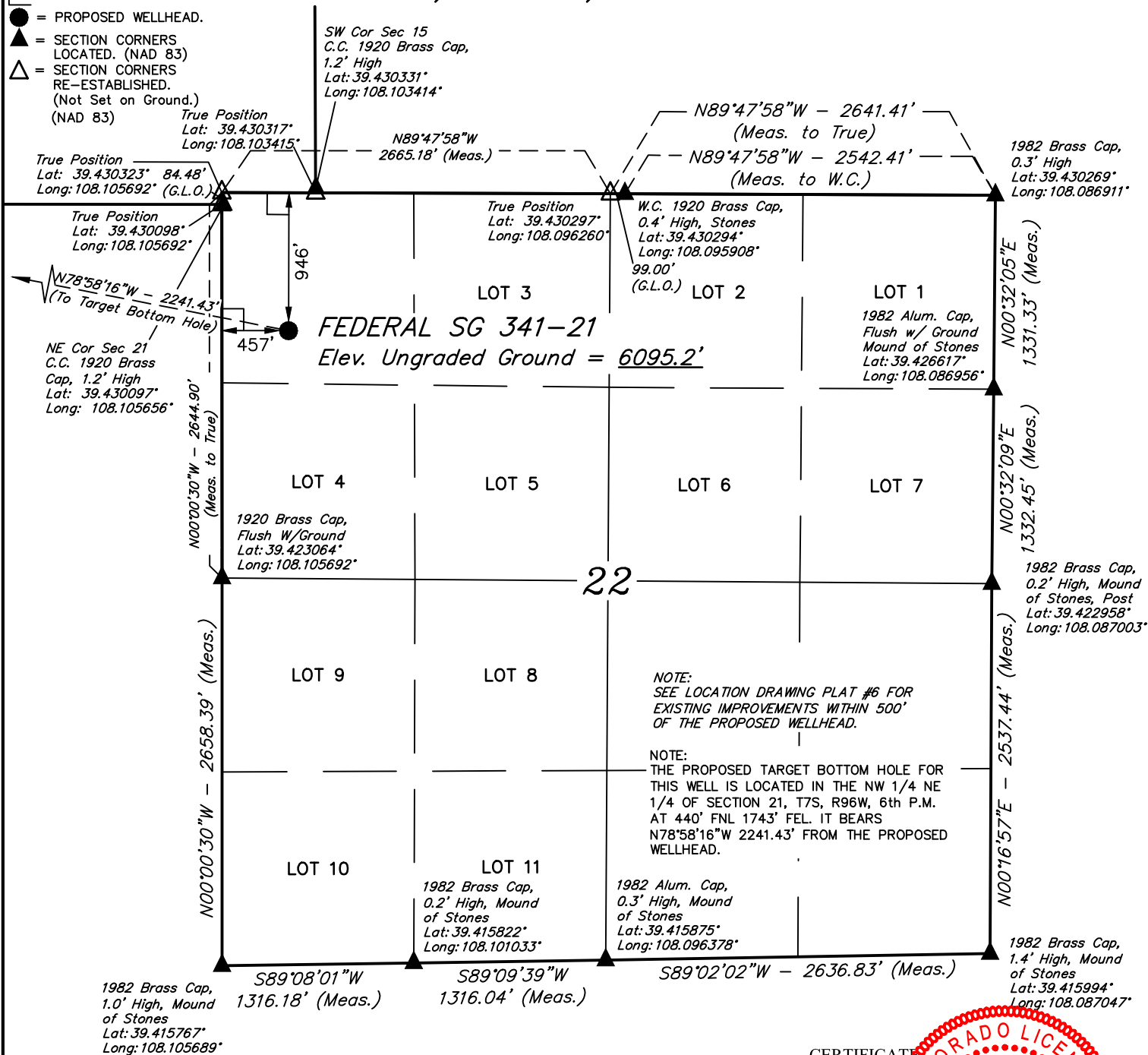


LEGEND:

- = 90° SYMBOL
- = PROPOSED WELLHEAD.
- ▲ = SECTION CORNERS LOCATED. (NAD 83)
- △ = SECTION CORNERS RE-ESTABLISHED. (Not Set on Ground.) (NAD 83)

T7S, R96W, 6th P.M.



NOTE:
SEE LOCATION DRAWING PLAT #6 FOR
EXISTING IMPROVEMENTS WITHIN 500'
OF THE PROPOSED WELLHEAD.

NOTE:
THE PROPOSED TARGET BOTTOM HOLE FOR
THIS WELL IS LOCATED IN THE NW 1/4 NE
1/4 OF SECTION 21, T7S, R96W, 6th P.M.
AT 440' FNL 1743' FEL. IT BEARS
N78°58'16\"W 2241.43' FROM THE PROPOSED
WELLHEAD.

1982 Alum. Cap,
0.3' High, Mound
of Stones
Lat: 39.415875°
Long: 108.096378°

1982 Brass Cap,
1.4' High, Mound
of Stones
Lat: 39.415994°
Long: 108.087047°

PDOP = 1.6

NAD 83 (SURFACE LOCATION)
LATITUDE = 39°25'39.79" (39.427721)
LONGITUDE = 108°06'14.67" (108.104074)
STATE PLANE NAD 83 (CO. CEN.)
N: 1591218.97 E: 2264516.98



CERTIFICATE
THIS IS TO CERTIFY THAT THE ABOVE PLAT WAS PREPARED AND THE
LOCATION AS SHOWN WAS STAKED ON THE GROUND FROM FIELD NOTES
OF ACTUAL SURVEYS MADE BY ME OR UNDER MY SUPERVISION AND THAT
THE SAME ARE TRUE AND CORRECT TO THE BEST OF MY KNOWLEDGE AND
BELIEF.

PLAT #1

REGISTERED LAND SURVEYOR
REGISTRATION NO. 8010
STATE OF COLORADO 04-10-18

REV: 2 04-09-18 T.L.L. (NAME CHANGE)

BASIS OF BEARINGS
BASIS OF BEARINGS IS A G.P.S. OBSERVATION

BASIS OF ELEVATION

SPOT ELEVATION AT THE NORTHWEST CORNER OF SECTION 30, T7S, R95W, 6th P.M.,
TAKEN FROM THE FORKED GULCH, QUADRANGLE, COLORADO, GARFIELD COUNTY, 7.5
MINUTE QUAD. (TOPOGRAPHIC MAP) PUBLISHED BY THE UNITED STATES DEPARTMENT
OF THE INTERIOR, GEOLOGICAL SURVEY. SAID ELEVATION IS MARKED AS BEING 5966
FEET.

UELS, LLC

Corporate Office * 85 South 200 East
Vernal, UT 84078 * (435) 789-1017



TEP Rocky Mountain LLC

FEDERAL SG 341-21 (SURFACE LOCATION)
NW 1/4 NW 1/4, SECTION 22, T7S, R96W, 6th P.M.
GARFIELD COUNTY, COLORADO

SURVEYED BY	BART HUNTING, C.R.	02-16-18	SCALE
DRAWN BY	M.D.	02-24-18	1" = 1000'

WELL LOCATION PLAT

LEGEND:

- [illegible]

NOTE:
THE PROPOSED TARGET BOTTOM HOLE
BEARS N78°58'16"W 2241.43' FROM THE
PROPOSED WELLHEAD WHICH IS LOCATED IN
THE NW 1/4 NW 1/4 OF SECTION 22, T7S,
R96W, 6th P.M. AT 946' FNL 457' FWL.

CERTIFICATE

THIS IS TO CERTIFY THAT THE ABOVE PLAT WAS PREPARED AND
LOCATION AS SHOWN WAS STAKED ON THE GROUND FROM FIELD NOTES
OF ACTUAL SURVEYS MADE BY ME OR UNDER MY SUPERVISION AND THAT
THE SAME ARE TRUE AND CORRECT TO THE BEST OF MY KNOWLEDGE AND
BELIEF.

NAD 83 (TARGET BOTTOM HOLE)
 LATITUDE = 39°25'44.03" (39.428898)
 LONGITUDE = 108°06'42.70" (108.111860)
STATE PLANE NAD 83 (CO. CEN.)
 N: 1591710.59 E: 2262330.88

PLAT #1

REGISTERED LAND SURVEYOR
REGISTRATION NO. 38130
STATE OF COLORADO

REV: 2 04-09-18 T.L.L (NAME CHANGE)

BASIS OF BEARINGS
BASIS OF BEARINGS IS A G.P.S. OBSERVATION

BASIS OF ELEVATION

SPOT ELEVATION AT THE NORTHWEST CORNER OF SECTION 30, T7S, R95W, 6th P.M., TAKEN FROM THE FORKED GULCH, QUADRANGLE, COLORADO, GARFIELD COUNTY, 7.5 MINUTE QUAD. (TOPOGRAPHIC MAP) PUBLISHED BY THE UNITED STATES DEPARTMENT OF THE INTERIOR, GEOLOGICAL SURVEY. SAID ELEVATION IS MARKED AS BEING 5966 FEET.

UELS, LLC

**Corporate Office * 85 South 200 East
Vernal, UT 84078 * (435) 789-1017**

TEP Rocky Mountain LLC

**FEDERAL SG 341-21 (TARGET BOTTOM HOLE)
NW 1/4 NE 1/4, SECTION 21, T7S, R96W, 6th P.M.
GARFIELD COUNTY, COLORADO**

SURVEYED BY	BART HUNTING, C.R.	02-16-18	SCALE
DRAWN BY	M.D.	02-24-18	1" = 1000'

WELL LOCATION PLAT

