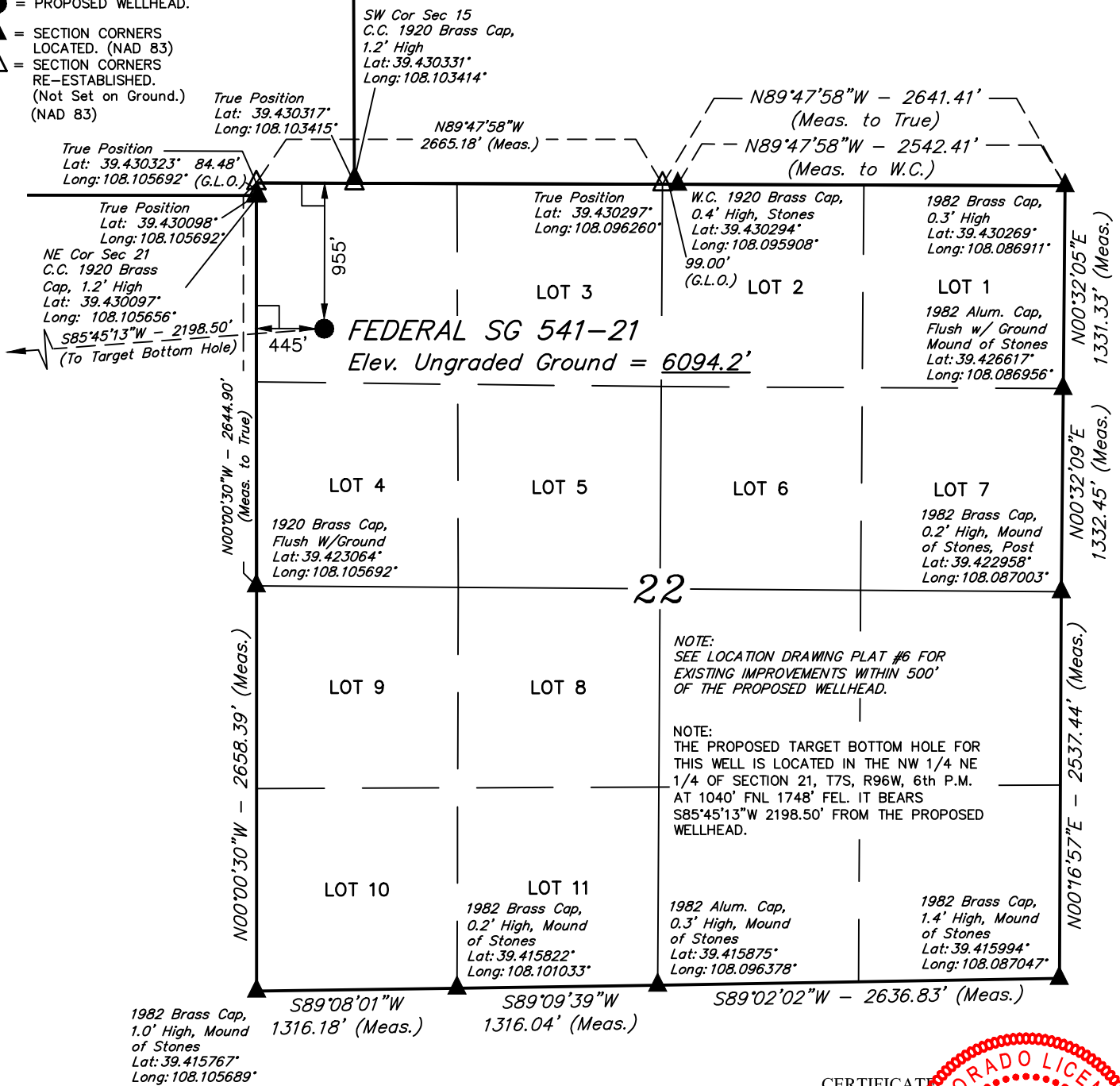


# LEGEND:

- = 90° SYMBOL
- = PROPOSED WELLHEAD.
- = SECTION CORNERS LOCATED. (NAD 83)
- = SECTION CORNERS RE-ESTABLISHED. (Not Set on Ground.) (NAD 83)

**T7S, R96W, 6th P.M.**



PDOP = 1.6

**NAD 83 (SURFACE LOCATION)**  
LATITUDE = 39°25'39.71" (39.427698)  
LONGITUDE = 108°06'14.82" (108.104118)  
**STATE PLANE NAD 83 (CO. CEN.)**  
N: 1591210.93 E: 2264504.36



CERTIFICATE  
THIS IS TO CERTIFY THAT THE ABOVE PLAT WAS PREPARED AND THE  
LOCATION AS SHOWN WAS STAKED ON THE GROUND FROM FIELD NOTES  
OF ACTUAL SURVEYS MADE BY ME OR UNDER MY SUPERVISION AND THAT  
THE SAME ARE TRUE AND CORRECT TO THE BEST OF MY KNOWLEDGE AND  
BELIEF.

**PLAT #1**

REGISTERED LAND SURVEYOR  
REGISTRATION NO. 8010  
STATE OF COLORADO 04-10-18

REV: 2 04-09-18 T.L.L. (NAME CHANGE)

**BASIS OF BEARINGS**  
BASIS OF BEARINGS IS A G.P.S. OBSERVATION

**BASIS OF ELEVATION**

SPOT ELEVATION AT THE NORTHWEST CORNER OF SECTION 30, T7S, R95W, 6th P.M.,  
TAKEN FROM THE FORKED GULCH, QUADRANGLE, COLORADO, GARFIELD COUNTY, 7.5  
MINUTE QUAD. (TOPOGRAPHIC MAP) PUBLISHED BY THE UNITED STATES DEPARTMENT  
OF THE INTERIOR, GEOLOGICAL SURVEY. SAID ELEVATION IS MARKED AS BEING 5966  
FEET.



**UELS, LLC**  
Corporate Office \* 85 South 200 East  
Vernal, UT 84078 \* (435) 789-1017



**TEP Rocky Mountain LLC**

**FEDERAL SG 541-21 (SURFACE LOCATION)**  
NW 1/4 NW 1/4, SECTION 22, T7S, R96W, 6th P.M.  
GARFIELD COUNTY, COLORADO

SURVEYED BY	BART HUNTING, C.R.	02-16-18	SCALE
DRAWN BY	M.D.	02-24-18	1" = 1000'

**WELL LOCATION PLAT**

**LEGEND:**

- = 90° SYMBOL  
 ● = PROPOSED WELLHEAD.  
 ○ = TARGET BOTTOM HOLE.  
 ▲ = SECTION CORNERS LOCATED. (NAD 83)  
 △ = SECTION CORNERS RE-ESTABLISHED. (Not Set on Ground.) (NAD 83)

**T7S, R96W, 6th P.M.**

SW Cor Sec 15  
C.C. 1920 Brass Cap,  
1.2' High  
Lat: 39.430331°  
Long: 108.103414°

True Position  
Lat: 39.430317°  
Long: 108.103415°

N89°55'19"W - 4602.26' (Meas. to True)  
N89°55'19"W - 4612.71' (Meas. to C.C.)  
True Position  
Lat: 39.430323° 84.48'  
Long: 108.105692° (G.L.O.)

1920 Brass Cap,  
0.7' High  
Lat: 39.430114°  
Long: 108.121980°

True Position  
Lat: 39.430098°  
Long: 108.105692°

C.C. 1920 Brass  
Cap, 1.2' High  
Lat: 39.430097°  
Long: 108.105656°

**FEDERAL SG 541-21**  
**Target Bottom Hole**

**Surface  
Location**

1920 Brass Cap,  
Lat: 39.422894°  
Long: 108.121981°

NOTE:  
THE PROPOSED TARGET BOTTOM HOLE  
BEARS S85°45'13"W 2198.50' FROM THE  
PROPOSED WELLHEAD WHICH IS LOCATED IN  
THE NW 1/4 NW 1/4 OF SECTION 22, T7S,  
R96W, 6th P.M. AT 955' FNL 445' FWL.

W 1/4 Cor. Sec. 22  
1920 Brass Cap,  
Flush W/Ground  
Lat: 39.423064°  
Long: 108.105692°

C.C. Brass Cap,  
Flush W/Ground,  
Lat: 39.415783°  
Long: 108.122006°

True Position  
Lat: 39.415784°  
Long: 108.122005°

W.C. S 1/4 Cor. Sec. 21  
1920 Brass Cap,  
Lat: 39.415742°  
Long: 108.112778°

1982 Brass Cap,  
1.0' High, Mound  
of Stones  
Lat: 39.415767°  
Long: 108.105689°

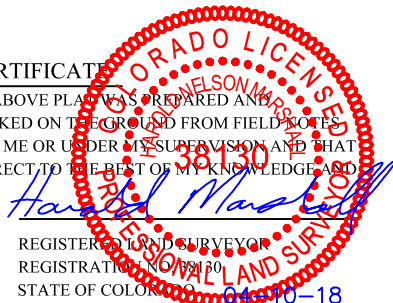
NW Cor Sec 28  
1920 Brass Cap,  
2.5' High, Mound  
of Stones  
Lat: 39.415786°  
Long: 108.123806°

N 1/4 Cor Sec 28  
1920 Brass Cap,  
1.6' High  
Lat: 39.415778°  
Long: 108.114806°

**CERTIFICATE**

THIS IS TO CERTIFY THAT THE ABOVE PLAT WAS PREPARED AND THE LOCATION AS SHOWN WAS STAKED ON THE GROUND FROM FIELD NOTES OF ACTUAL SURVEYS MADE BY ME OR UNDER MY SUPERVISION AND THAT THE SAME ARE TRUE AND CORRECT TO THE BEST OF MY KNOWLEDGE AND BELIEF.

REGISTERED LAND SURVEYOR  
REGISTRATION # 1801  
STATE OF COLORADO



<b>NAD 83 (TARGET BOTTOM HOLE)</b>
LATITUDE = 39°25'38.10" (39.427251)
LONGITUDE = 108°06'42.76" (108.111877)
<b>STATE PLANE NAD 83 (CO. CEN.)</b>
N: 1591111.18 E: 2262308.84



**PLAT #1**

REV: 2 04-09-18 T.L.L. (NAME CHANGE)

**BASIS OF BEARINGS**

BASIS OF BEARINGS IS A G.P.S. OBSERVATION

**BASIS OF ELEVATION**

SPOT ELEVATION AT THE NORTHWEST CORNER OF SECTION 30, T7S, R95W, 6th P.M., TAKEN FROM THE FORKED GULCH, QUADRANGLE, COLORADO, GARFIELD COUNTY, 7.5 MINUTE QUAD. (TOPOGRAPHIC MAP) PUBLISHED BY THE UNITED STATES DEPARTMENT OF THE INTERIOR, GEOLOGICAL SURVEY. SAID ELEVATION IS MARKED AS BEING 5966 FEET.

**UELS, LLC**

Corporate Office \* 85 South 200 East  
Vernal, UT 84078 \* (435) 789-1017



**TEP Rocky Mountain LLC**

**FEDERAL SG 541-21 (TARGET BOTTOM HOLE)**  
**NW 1/4 NE 1/4, SECTION 21, T7S, R96W, 6th P.M.**  
**GARFIELD COUNTY, COLORADO**

<b>SURVEYED BY</b>	BART HUNTING, C.R.	02-16-18	<b>SCALE</b>
<b>DRAWN BY</b>	M.D.	02-24-18	1" = 1000'

**WELL LOCATION PLAT**

