

# Inspection Photos

06/15/2018

Operator: FOUNDATION ENERGY  
MANAGEMENT LLC - 10112

Location ID: 455471

Inspection Doc. Number: 682503505  
Weld County, CO

Aaron Trujillo  
NE Reclamation Specialist  
COGCC

Inspection Photos  
Operator: FOUNDATION ENERGY MANAGEMENT LLC - 10112  
Location ID: 455471



**Photo 1:** Photo taken from the northwestern end of the location, facing north. Photo of Diffuse Knapweed observed along access road and interim area.



**Photo 2:** Photo taken from the east end of the location, facing west. Photo of Diffuse Knapweed observed along access road and interim area.



Inspection Photos  
Operator: FOUNDATION ENERGY MANAGEMENT LLC - 10112  
Location ID: 455471



**Photo 3:** Photo taken from western end of the location. Photo of Scotch Thistle observed on the interim area.



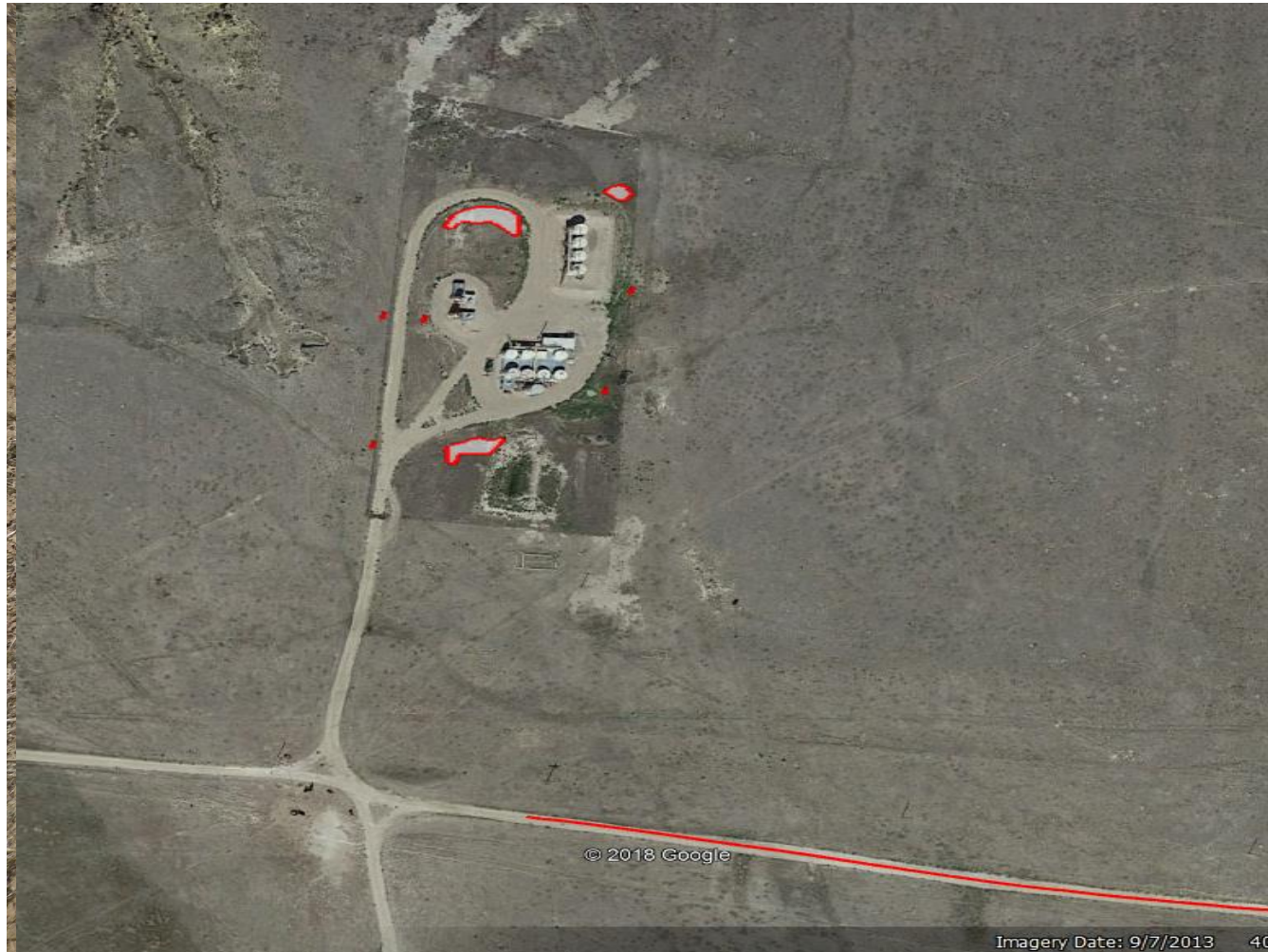
**Photo 4:** Photo taken from the west end of the location. Photo shows Diffuse Knapweed is beginning to encroach onto adjacent lands from the location.





**Photo 5:** Photo taken on the south end of the location, facing south. Photo of Diffuse Knapweed observed along the interim area.





**Photo 6:** 2013 Aerial imagery. Photo shows areas (red polygon) where Noxious Weeds (Diffuse Knapweed) were observed on location and access road, and mapped using a GPS.