

Inspection Photos

06/15/2018

Operator: FOUNDATION ENERGY
MANAGEMENT LLC - 10112

Location ID: 327361

Inspection Doc. Number: 682503498
Weld County, CO

Aaron Trujillo
NE Reclamation Specialist
COGCC

Inspection Photos
Operator: FOUNDATION ENERGY MANAGEMENT LLC - 10112
Location ID: 327361



Photo 1: Photo taken from the access road, east of the location, facing north. Photo of Scotch Thistle along road.



Photo 2: Photo taken from the access road, east of the location, facing north. Photo of Scotch Thistle along road.

Inspection Photos
Operator: FOUNDATION ENERGY MANAGEMENT LLC - 10112
Location ID: 327361



Photo 3: Photo taken from the access road, east of the location, facing west. Photo of Diffuse Knapweed observed along access road.



Photo 4: Photo of well/sign

Inspection Photos
Operator: FOUNDATION ENERGY MANAGEMENT LLC - 10112
Location ID: 327361

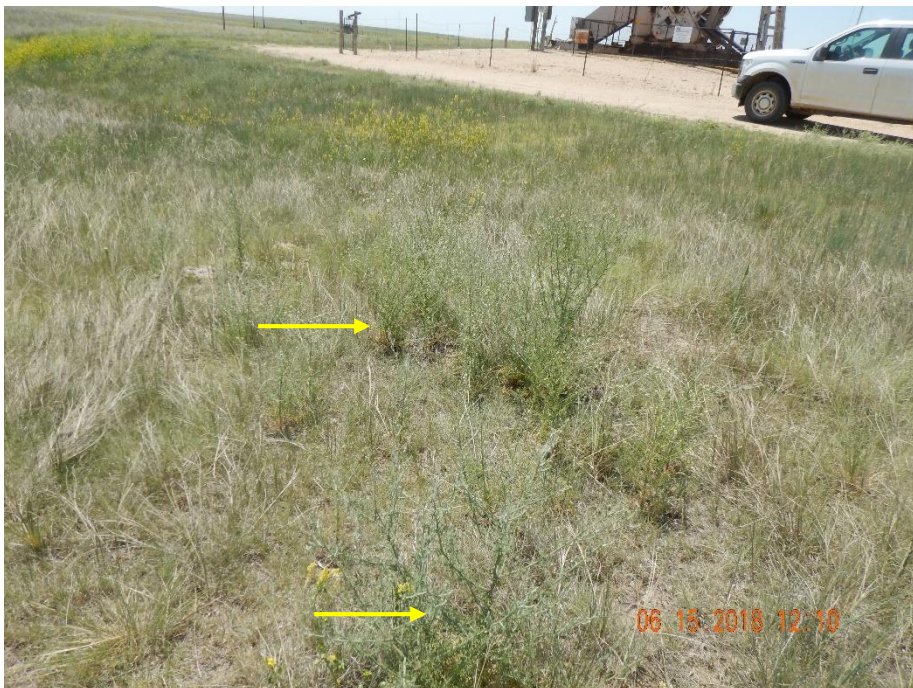


Photo 5: Photo taken from the north end of the location, facing south. Photo shows Diffuse Knapweed observed in the interim areas.



Photo 6: Photo taken from the east end of the location, facing west. Photo shows Diffuse Knapweed observed in the interim areas.

Inspection Photos
Operator: FOUNDATION ENERGY MANAGEMENT LLC - 10112
Location ID: 327361

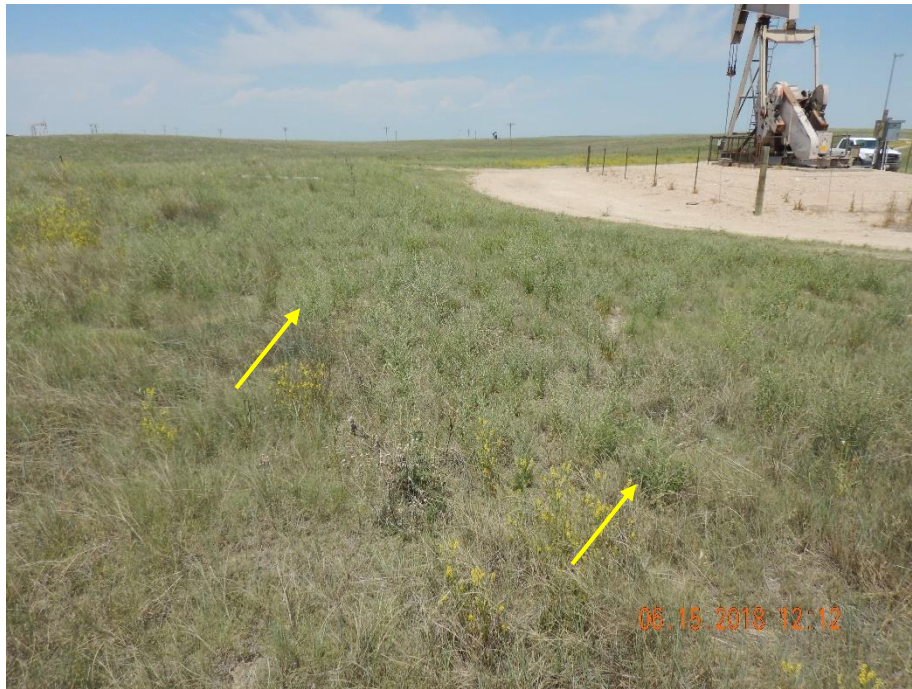


Photo 7: Photo taken from the southwest end of the location, facing north. Photo shows Diffuse Knapweed observed in the interim areas..



Photo 8: Photo taken from the northwest end of the location, facing southeast. Photo shows Diffuse Knapweed observed in the interim areas.

Inspection Photos
Operator: FOUNDATION ENERGY MANAGEMENT LLC - 10112
Location ID: 327361



Photo 9: Photo taken from the access road south of the location, facing north. Photo shows operator conducted mowing operations in a narrow strip on the access road. Photo shows that Diffuse Knapweed remains on areas of the access road and interim areas.

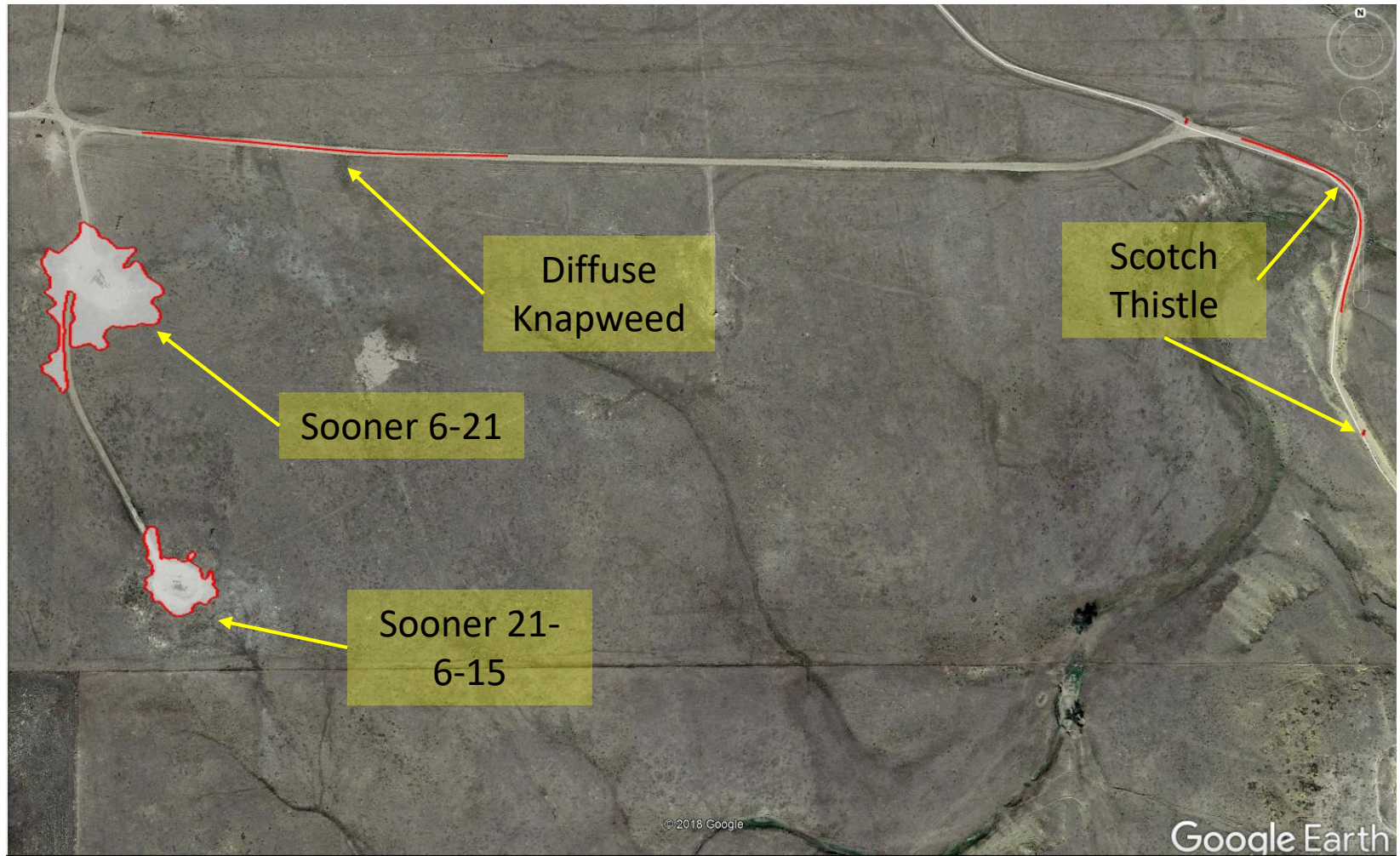


Photo 10: 2013 Aerial imagery. Photo shows areas (red polygon) where Noxious Weeds (Diffuse Knapweed) were observed on location and access road, and mapped using a GPS. Photo also shows areas along the access road where Scotch Thistle (*Onopordum acanthium*) was observed.