

# Inspection Photos

06/15/2018

Operator: FOUNDATION ENERGY  
MANAGEMENT LLC - 10112

Location ID: 330509

Inspection Doc. Number: 682503496  
Weld County, CO

Aaron Trujillo  
NE Reclamation Specialist  
COGCC

Inspection Photos  
Operator: FOUNDATION ENERGY MANAGEMENT LLC - 10112  
Location ID: 330509



**Photo 1:** Photo taken from the access road, east of the location, facing north. Photo of Scotch Thistle along road.



**Photo 2:** Photo taken from the access road, east of the location, facing north. Photo of Scotch Thistle along road.

Inspection Photos  
Operator: FOUNDATION ENERGY MANAGEMENT LLC - 10112  
Location ID: 330509



**Photo 3:** Photo taken from the access road, east of the location, facing west. Photo of Diffuse Knapweed observed along access road.



**Photo 4:** Photo of well/sign

Inspection Photos  
Operator: FOUNDATION ENERGY MANAGEMENT LLC - 10112  
Location ID: 330509



**Photo 5:** Photo taken from the south end of the location, facing south. Photo shows a narrow strip along the access road where mowing operations appear to have been conducted, however, there are areas where noxious weeds remain intact/uncut. Noxious weeds were also observed beyond areas of the access road and location where mowing operations were conducted.



**Photo 6:** Continued from photo 5. Photo of Diffuse Knapweed that remains intact/uncut after mowing operations.

Inspection Photos  
Operator: FOUNDATION ENERGY MANAGEMENT LLC - 10112  
Location ID: 330509



**Photo 7:** Photo taken from the east end of the well location, facing southwest. Mowing operations appear to have been conducted, however, there are areas where noxious weeds (Diffuse Knapweed) remain intact/uncut. In addition, Knapweed was observed on areas of the access road and location beyond where mowing operations were conducted.

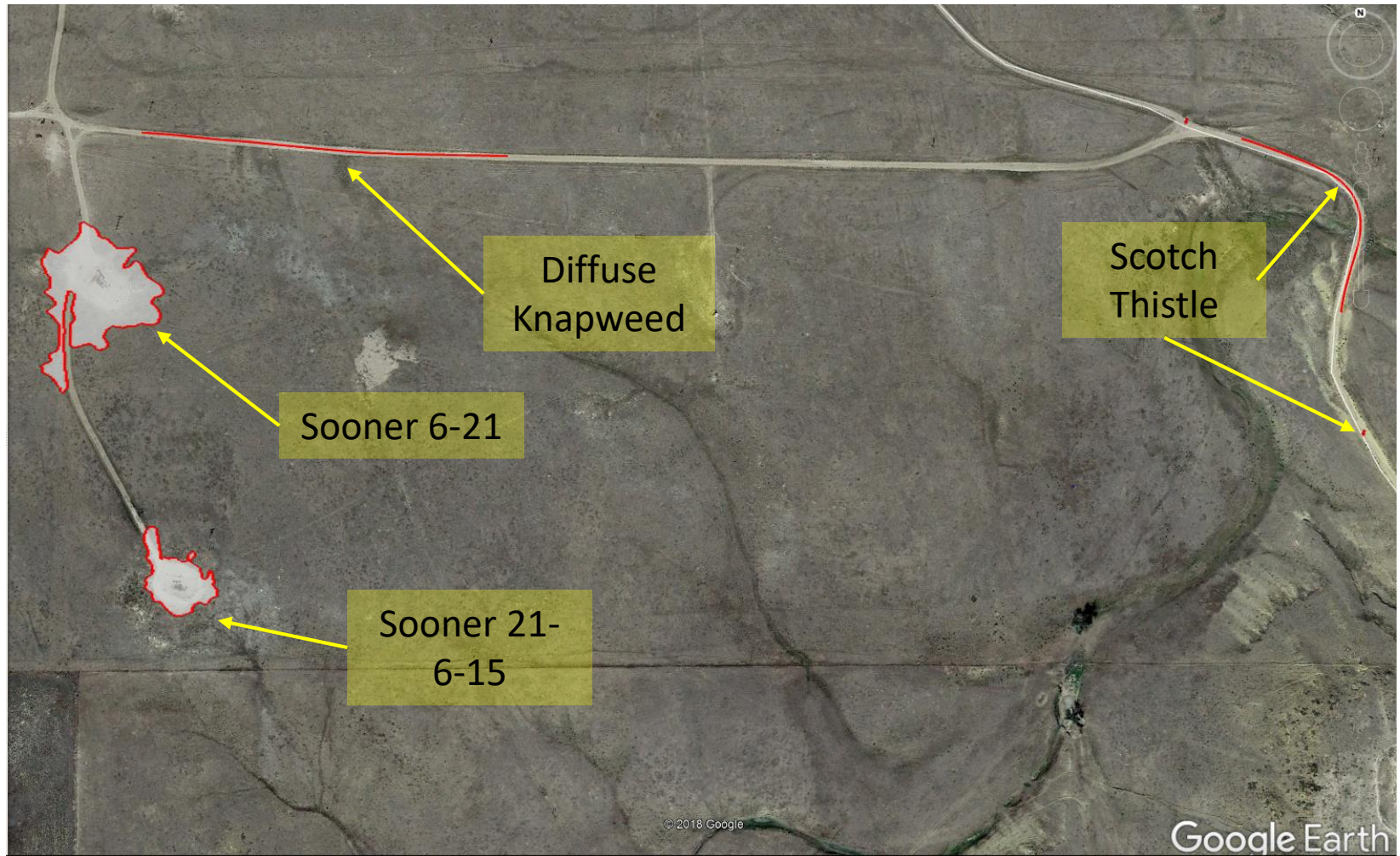


**Photo 8:** Photo taken from the south end of the well location, facing north. Photo shows a narrow strip along the location where mowing operations appear to have been conducted, however, there are areas where noxious weeds (Diffuse Knapweed) remain intact/uncut. In addition, Knapweed was observed on areas of the access road and location beyond where mowing operations were conducted.

Inspection Photos  
Operator: FOUNDATION ENERGY MANAGEMENT LLC - 10112  
Location ID: 330509



**Photo 9:** Photo taken from the west end of the well. Photo shows Diffuse Knapweed on location.



**Photo 10:** 2013 Aerial imagery. Photo shows areas (red polygon) where Noxious Weeds (Diffuse Knapweed) were observed on location and access road, and mapped using a GPS. Photo also shows areas along the access road where Scotch Thistle (*Onopordum acanthium*) was observed.