

Inspection Photos

06/15/2018

Operator: FOUNDATION ENERGY
MANAGEMENT LLC - 10112

Location ID: 330359

Inspection Doc. Number: 682503490
Weld County, CO

Aaron Trujillo
NE Reclamation Specialist
COGCC

Inspection Photos
Operator: FOUNDATION ENERGY MANAGEMENT LLC - 10112
Location ID: 330359



Photo 1: Photo of well sign.



Photo 2: Photo taken from the west end of the location, facing northeast. Photo shows overview of well location.

Inspection Photos
Operator: FOUNDATION ENERGY MANAGEMENT LLC - 10112
Location ID: 330359



Photo 3: Photo taken from the west end of the location, facing southeast. Photo shows overview of well location.



Photo 4: Photo shows Diffuse Knapweed found on access road.

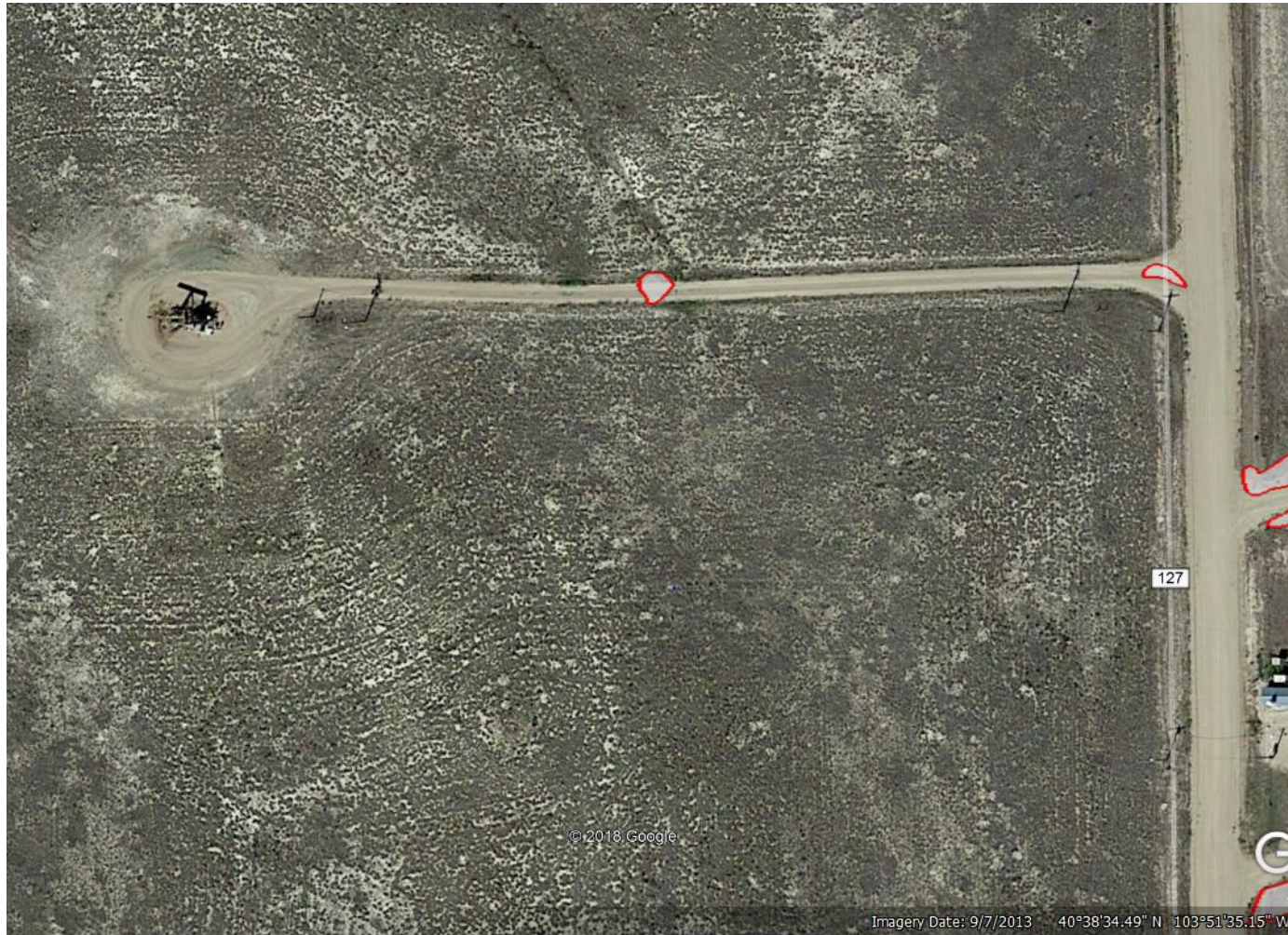


Photo 9: 2013 Aerial imagery. Photo shows areas (red polygon) where Noxious Weeds (Diffuse Knapweed) were observed on access road, and mapped using a GPS.