

# Inspection Photos

06/15/2018

Operator: FOUNDATION ENERGY  
MANAGEMENT LLC - 10112

Location ID: 447523

Inspection Doc. Number: 682503486  
Weld County, CO

Aaron Trujillo  
NE Reclamation Specialist  
COGCC

Inspection Photos  
Operator: FOUNDATION ENERGY MANAGEMENT LLC - 10112  
Location ID: 447523



**Photo 1:** Photo taken from the southwest end of the location, facing north. Photos 1-3 show an overview of the location from north, northeast to east.



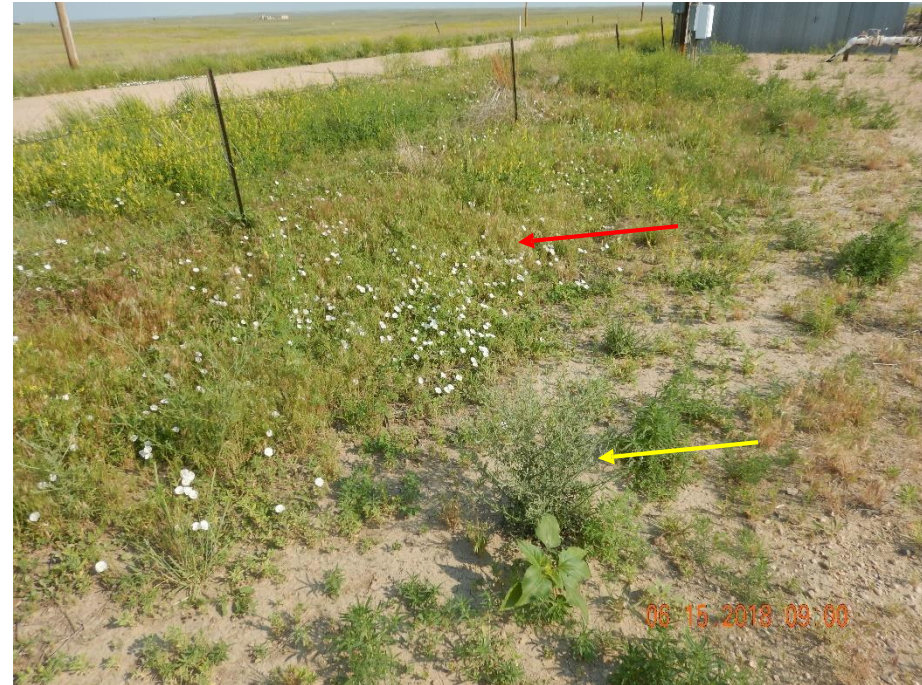
**Photo 2:**



Inspection Photos  
Operator: FOUNDATION ENERGY MANAGEMENT LLC - 10112  
Location ID: 447523



**Photo 3:**



**Photo 4:** Photo taken from the west end of the location, facing north west. Photo shows Field Bindweed (red arrow) and Diffuse Knapweed (yellow arrow) on location.



Inspection Photos  
Operator: FOUNDATION ENERGY MANAGEMENT LLC - 10112  
Location ID: 447523



**Photo 5:** Photo taken from the southwest end of the location, facing east. Photo of Diffuse Knapweed on location.



**Photo 6:** Photo taken from the south end of the location, facing west. Photo shows that Diffuse Knapweed (lighter green plant in photo) is prevalent throughout the majority of the location. Yellow plant observed is Yellow Sweetclover.



Inspection Photos  
Operator: FOUNDATION ENERGY MANAGEMENT LLC - 10112  
Location ID: 447523



**Photo 7:** Photo taken from the south end of the location, facing north. Photo shows that Diffuse Knapweed (lighter green plant in photo) is prevalent throughout the majority of the location. Yellow plant observed is Yellow Sweetclover.



**Photo 8:** Photo taken from the southeast end of the location, facing north. Photo shows that Diffuse Knapweed (lighter green plant in photo) is prevalent throughout the majority of the location.



Inspection Photos  
Operator: FOUNDATION ENERGY MANAGEMENT LLC - 10112  
Location ID: 447523



**Photo 9:** Photo taken from the southeast end of the location, facing south. Photo shows that Diffuse Knapweed (lighter green plant in photo) is prevalent throughout the majority of the location.



**Photo 10:** Photo taken from the central area of the location, facing west. Photo shows that Diffuse Knapweed (lighter green plant in photo) is prevalent throughout the majority of the location. Yellow plant observed is Yellow Sweetclover.



Inspection Photos  
Operator: FOUNDATION ENERGY MANAGEMENT LLC - 10112  
Location ID: 447523



**Photo 11:** Photo taken from the central, north end of the location. Photo of what appears to be a deer carcass found on location. See photo 15.



**Photo 12:** Photo taken from the northwest end of the location, facing east. Photo shows that Diffuse Knapweed (lighter green plant in photo) is prevalent throughout the majority of the location. Yellow plant observed is Yellow Sweetclover.



Inspection Photos  
Operator: FOUNDATION ENERGY MANAGEMENT LLC - 10112  
Location ID: 447523



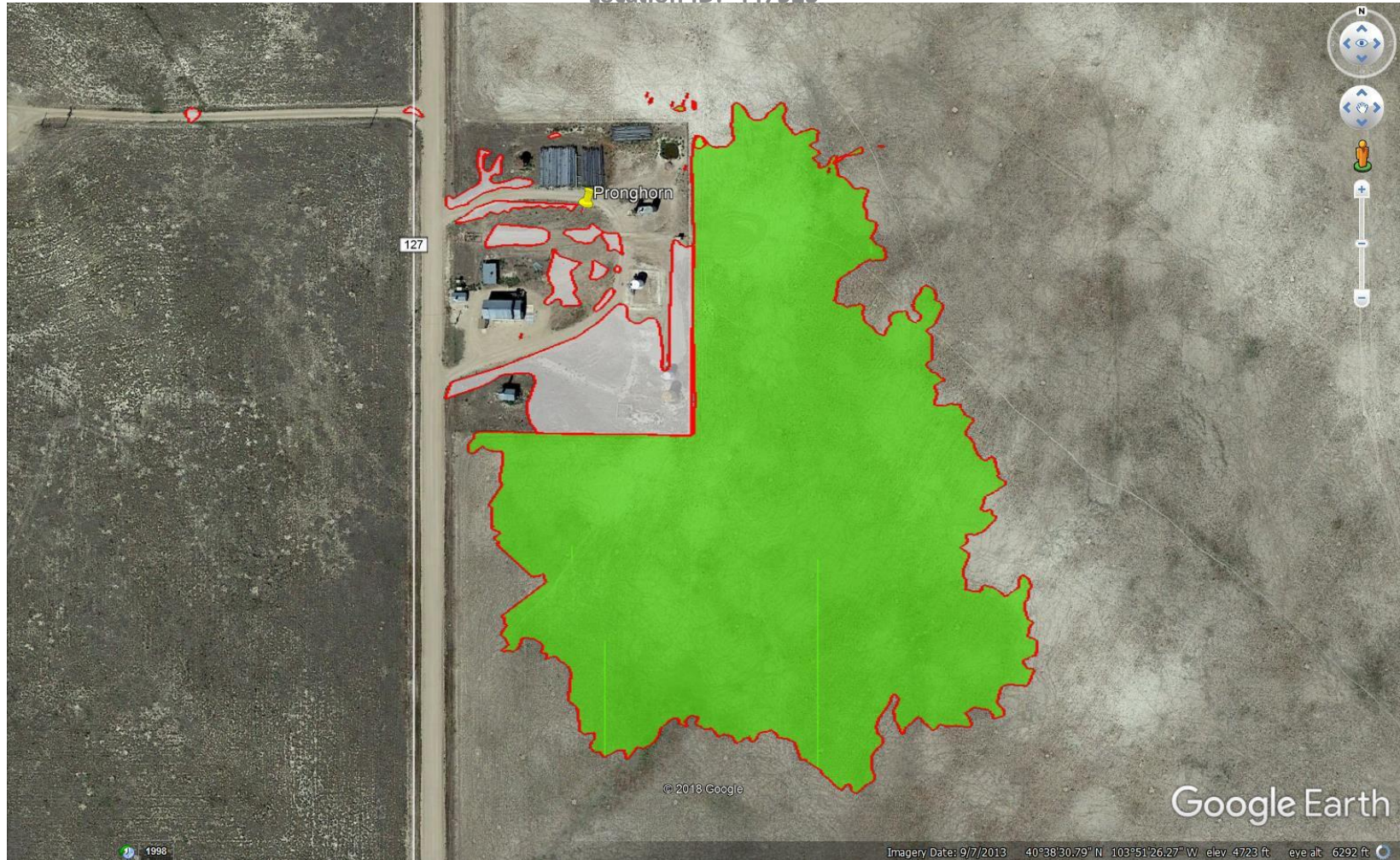
**Photo 13:** Photo taken from the northwest end of the location, facing northwest. Photo shows that Diffuse Knapweed



**Photo 14:** Photo taken from the northwest end of the location, facing south. Photo shows that Diffuse Knapweed



Inspection Photos  
Operator: FOUNDATION ENERGY MANAGEMENT LLC - 10112  
Location ID: 447523



**Photo 15:** 2013 Aerial imagery. Photo shows areas (red polygon) where Noxious Weeds were mapped using a GPS by the Reclamation Specialist. White polygons represent areas of the location where Diffuse Knapweed were observed on the location. Polygon in green are areas where Diffuse Knapweed has spread from the location onto the adjacent lands. It is noted that Knapweed patches observed on reference areas were not as dense as patches observed on location.



Inspection Photos  
Operator: FOUNDATION ENERGY MANAGEMENT LLC - 10112  
Location ID: 447523

<b>Good Housekeeping:</b>				
Type	Satisfactory/Action Required	Comment	Corrective Action	CA Date
WEEDS	ACTION REQUIRED	Noticed diffuse knapweed (List B noxious weed) growing throughout the location/production facility which has developed seed heads.	Remove and control noxious weeds growing on the location/production facility. The noxious weeds need to be removed and properly disposed of to prevent the spread of the developed seed heads.	09/02/2015
STORAGE OF SUPL	ACTION REQUIRED	There is unused equipment being stored at the production facility. Noticed metal pipe, tanks, hay bales,	Remove unused equipment and maintain the location in a workman like manner.	09/18/2015

**Photo 16:** A clip from Inspection #673502680 dated 8/17/2015 documenting Diffuse Knapweed concerns and requiring management.



**Inspection Photos**  
**Operator: FOUNDATION ENERGY MANAGEMENT LLC - 10112**  
**Location ID: 447523**

Inspector Name: Binschus, Chris

Emergency Contact Number (S/AR): _____	Corrective Date: _____
Comment: _____	
Corrective Action: _____	

<b><u>Good Housekeeping:</u></b>				
Type	Satisfactory/Action Required	Comment	Corrective Action	CA Date
WEEDS	<b>ACTION REQUIRED</b>	Portions of each location (well location and tank battery/storage yard) were mowed within 2 days prior to this inspection; however, mowing by itself is not a sufficient control for mature Diffuse knapweed during this time of year. Mature Diffuse knapweed individuals were observed in areas that were not mowed. Knapweed seed heads were observed in the mowed cutting areas. Refer to attached photos in Document #682401239.	Operator instructed on 8/25/16 to pull and bag remaining plants in areas that were not mowed. Operator instructed on 8/30/16 to collect, remove, and dispose weed debris and seed heads properly from areas that were mowed. Also, on 8/30/16, the 2-week corrective action date was set to perform the corrective actions.	09/13/2016

**Spills:**



**Photo 17:** A clip from Inspection #682401201 dated 8/25/2016 documenting Diffuse Knapweed concerns and requiring management.