



SRC ENERGY

P&A Wellbore Diagram

Operator: SRC Energy	Operator #: 10311
Well Name: Monfort E 30-29	Location: Weld, CO
API: 05-123-24949	Legal: NWNW 30-6N-65W

Current

Proposed

Deepest Water Well (1 mile): 331'

Well History

Spud Date: 04/22/2007

Perfs: Codell: 7338' - 7352'

Bradenhead History

Date of last test: N/A

Bradenhead pressure: N/A

Plugging Procedure

Set CIBP @ 7263'

Set 33 sx on top of CIBP (434' plug)

Perforate @ 2400'

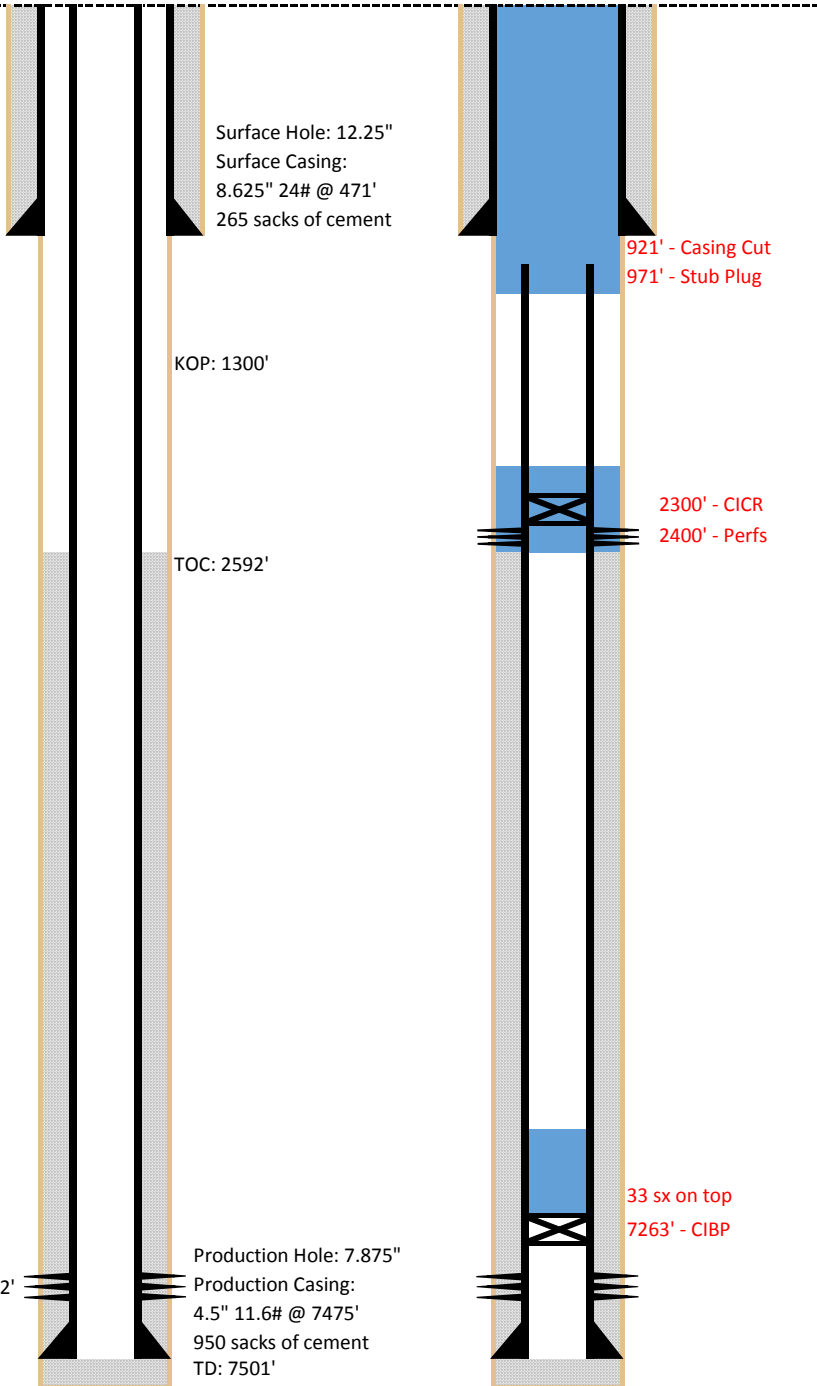
Set CICR @ 2300'

Pump 88 sx through CICR (400' annulus plug)

Set 8 sx on top of CICR (100' plug)

Cut casing @ 921'

Pump 295 sx @ 971' to surface



Formations

Fox Hills (Btm)	890'
Upper Pierre (Btm)	1460'
Sussex (Top)	4315'
Shannon (Top)	5060'
Niobrara (Top)	7029'
Codell (Top)	7336'

Legend

Existing Cement

Cement Pumped

CIBP

CICR