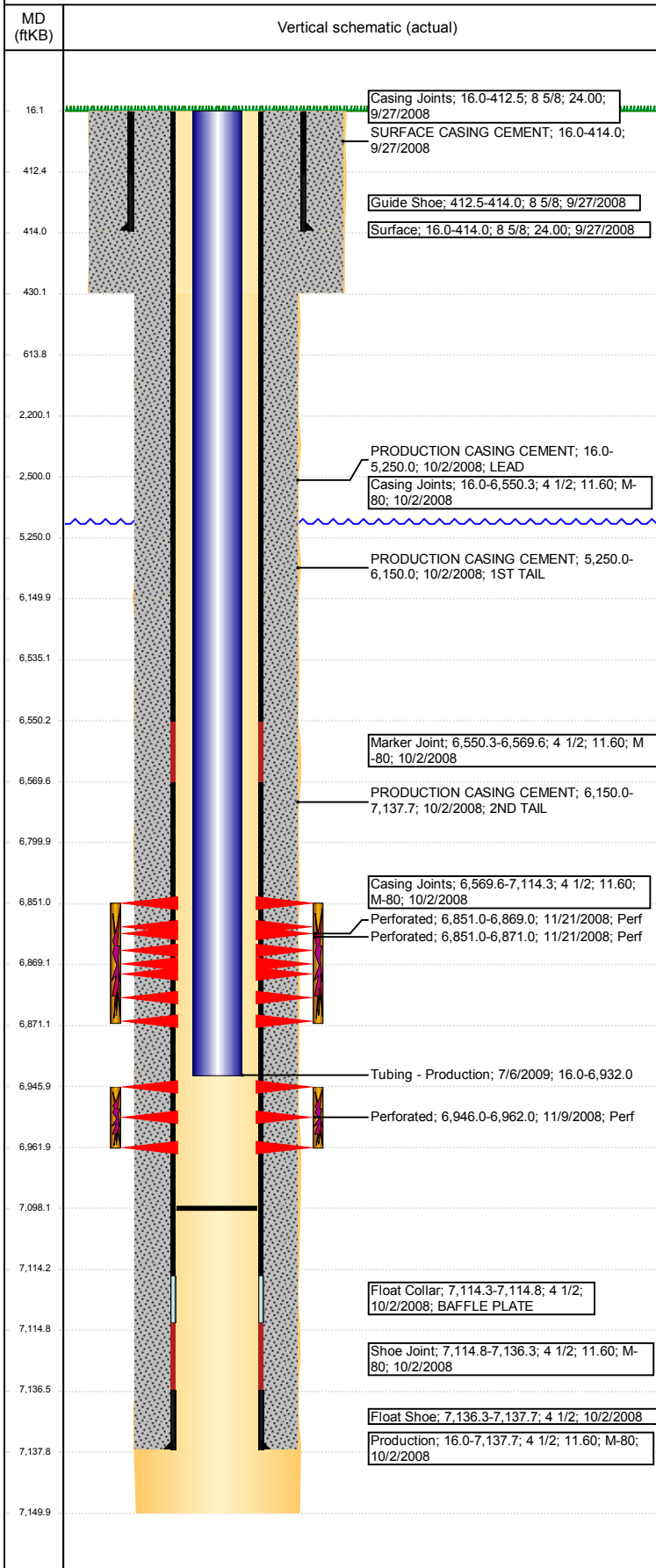


# Wellbore Schematic Input Report

Well Name: GWAA 02-33

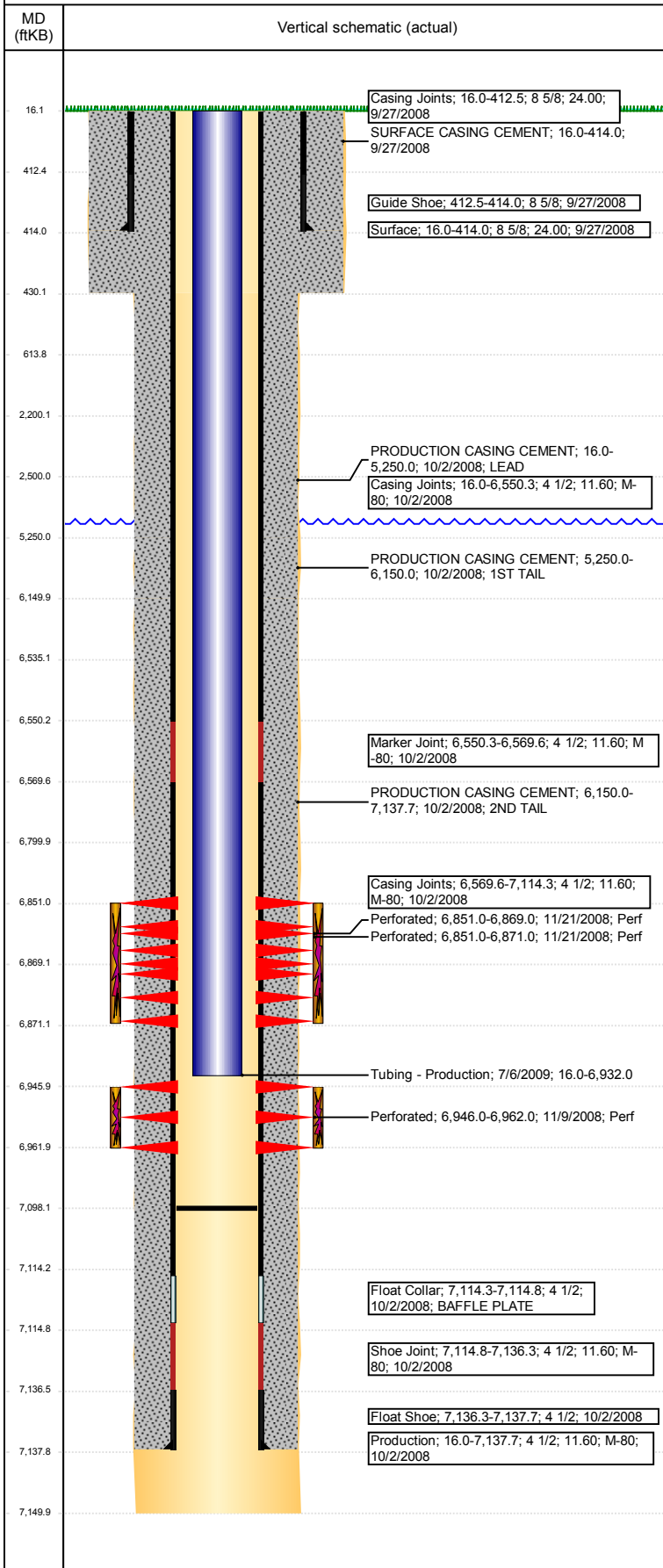
DEVIATED - ORIGINAL HOLE, 6/13/2018 12:53:22 PM



Well Header						
API 05-123-27068		Well Report Center 425778712		Well Configuration Type DEVIATED		
Original KB Elevation (ft) 4,642		KB - GL / MSL (ftKB) 16.00		Spud Date 9/27/2008		P & A Date
Production Route Watt - A3-01			Well Production Status PR			SoRT Ignore No
Directions To Well				Actual Latitude (°) 40.42345000		Actual Longitude (°) -104.63603000
Comment LITTLE INFO IN FILE, USED STATE RPTS & DRILL RPTS. CEMENT BASKETS @ 4884', 4329', & 3605'. NIOB PERFS RPTD TO STATE & DRL RPTS - ZONE A - 6851-6871', ZONE B- 6851-6869'. WHY SAME DEPTHS??? FIELD OPS NOTICE- FLOWLINES ABANDONED PER RULE 1103, RCVD 6/22/17.						
Congressional Location						
Quarter 3 SW	Quarter 4 SW	Section 2	Township 5	Twnshp N/S Dir N	Range 65	Range E/W Dir W
Rig Operator						
Rig Operator						
Plug Back Total Depths						
Date	Depth (ftKB)	Method		Com		
7/2/2009	7,098.0	TAG		DRILL OUT & CLEAN OUT		
Wellbore Sections						
Section Des		Size (in)		Act Top, MD (ftKB)		Act Btm, MD (ftKB)
SURFACE		12 1/4		16		430
PRODUCTION		7 7/8		430		7,150
Zone Statuses						
Zone Name		Status Date		Status		
CODELL		1/7/2009		PR		
NIOBRARA		1/7/2009		PR		
Casing Strings						
Surface, 414.0ftKB						
Casing Description	Run Date	OD (in)	Wt/Len (l...	Grade	Top, MD (ft...	MD (ftKB)
Surface	9/27/2008	8 5/8	24.00		16.0	414.0
Production, 7,137.7ftKB						
Casing Description	Run Date	OD (in)	Wt/Len (l...	Grade	Top, MD (ft...	MD (ftKB)
Production	10/2/2008	4 1/2	11.60	M-80	16.0	7,137.7
Cement						
Des		Start Date		Top (ftKB)		Btm (ftKB)
SURFACE CASING CEMENT		9/27/2008		16.0		414.0
PRODUCTION CASING CEMENT		10/2/2008		16.0		5,250.0
PRODUCTION CASING CEMENT		10/2/2008		5,250.0		6,150.0
Proposed Cement						
Des				Top (ftKB)		Btm (ftKB)
Balance Plug				2,200.0		2,500.0
Shoe Plug				16.0		614.0
Tubing Strings						
Tubing Description	Run Date	String...	ID (in)	Wt (lb/ft)	Grade	Len (ft)
Tubing - Production	7/6/2009	2 3/8				6,916.00
Tubing Components						
Item Des	OD (in)	Wt (lb/ft)	Grade	Jts	Len (ft)	Btm (ftKB)
Tubing	2 3/8			213	6,914.40	6,930.4
Seal Nipple	2 3/8			1	1.10	6,931.5
Notched collar	2 3/8			1	0.50	6,932.0
Other In Hole						
Run Date	Des			OD (in)	Top (ftKB)	Btm (ftKB)
Proposed Other In Hole						
Des		OD (in)		Top (ftKB)		Btm (ftKB)
Cast Iron Bridge Plug w/ 20 SX Cement		4		6,535.0		6,800.0
Logs						
Date	Type				Top, MD (ftKB)	Btm, MD (ftKB)
10/2/2008	COMPENSATED DENSITY				3,550.0	7,128.0
10/2/2008	INDUCTION				400.0	7,148.0
11/7/2008	CEMENT BOND				16.0	7,100.0
5/14/2018	GYRO				16.0	6,900.0

**Well Name: GWAA 02-33**

DEVIATED - ORIGINAL HOLE, 6/13/2018 12:53:23 PM



Perforation Data				
Linked Zone	Sum of Entered Shot Total	Top (ftKB)	Btm (ftKB)	Date
NIOBRARA, ORIGINAL HOLE	40	6,851.00	6,871.00	11/21/2008
NIOBRARA, ORIGINAL HOLE	72	6,851.00	6,869.00	11/21/2008
CODELL, ORIGINAL HOLE	64	6,946.00	6,962.00	11/9/2008
<b>Total (Sum)</b>	<b>176</b>			
Job Supply Amounts				
Supply Item Des	Type	Uni...	Job Category	Total ... Total ... Total ...