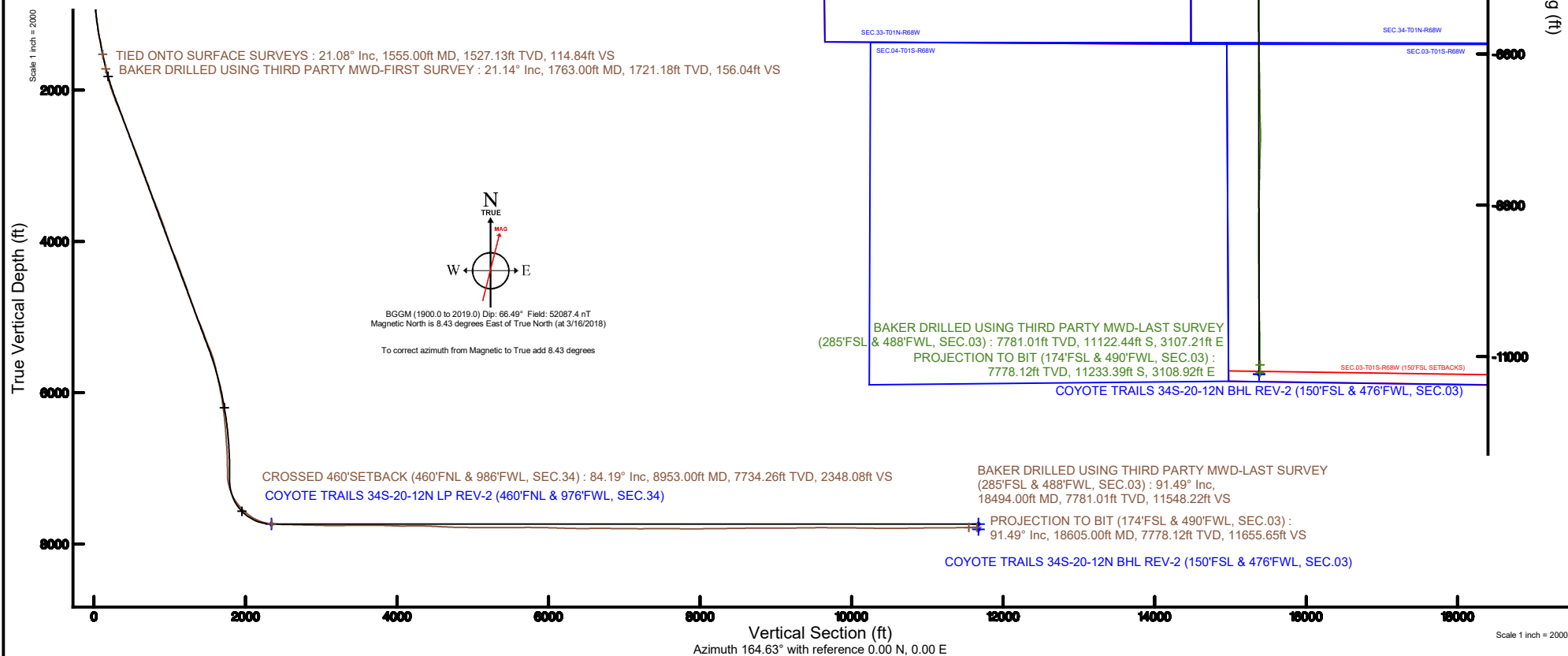


Location:	COLORADO	Slot:	SLOT#05 COYOTE TRAILS 34S-20-12N (1146FSL & 2103FEL, SEC.28)
Field:	WELD COUNTY (NAD83/TRUE NORTH)	Well:	COYOTE TRAILS 34S-20-12N
Facility:	SEC.28-T01N-R68W	Wellbore:	COYOTE TRAILS 34S-20-12N PWB
Plot reference wellpath is COYOTE TRAILS 34S-20-12N PWP (REV-B.0)		Grid System: NAD83 / Lambert Colorado SP, Northern Zone (501), US feet	
True vertical depths are referenced to PATTERSON 901 (29KB) (RKB)		* = Wellpath was transformed from a different geodetic datum	
Measured depths are referenced to PATTERSON 901 (29KB) (RKB)		North Reference: True north	
PATTERSON 901 (29KB) (RKB) to Mean Sea Level: 5299 feet		Scale: True distance	
Mean Sea Level to Mud line (At Slot: SLOT#05 COYOTE TRAILS 34S-20-12N (1146FSL & 2103FEL, SEC.28)): 0 feet		Depths are in feet	
Coordinates are in feet referenced to Slot		Created by: ingnjmnr on 2018-03-20	
		Database: Denver	





Actual Wellpath Report

COYOTE TRAILS 34S-20-12N AWP

Page 1 of 10



REFERENCE WELLPATH IDENTIFICATION			
Operator	EXTRACTION OIL & GAS	Slot	SLOT#05 COYOTE TRAILS 34S-20-12N (1146'FSL & 2103'FEL, SEC.28)
Area	COLORADO	Well	COYOTE TRAILS 34S-20-12N
Field	WELD COUNTY (NAD83/TRUE NORTH)	Wellbore	COYOTE TRAILS 34S-20-12N AWB
Facility	SEC.28-T01N-R68W		

REPORT SETUP INFORMATION			
Projection System	NAD83 / Lambert Colorado SP, Northern Zone (501), US feet	Software System	WellArchitect® 5.0
North Reference	True	User	Ingmjmr
Scale	0.999965	Report Generated	3/20/2018 at 1:55:11 PM
Convergence at slot	0.32° East	Database/Source file	Denver/COYOTE_TRAILS_34S-20-12N_AWP.xml

WELLPATH LOCATION						
	Local coordinates		Grid coordinates		Geographic coordinates	
	North[ft]	East[ft]	Easting[US ft]	Northing[US ft]	Latitude	Longitude
Slot Location	0.30	-71.97	3138197.95	1249778.75	40°01'04.706"N	105°00'23.666"W
Facility Reference Pt			3138269.92	1249778.85	40°01'04.703"N	105°00'22.741"W
Field Reference Pt			3185481.27	1419166.81	40°28'55.560"N	104°49'59.556"W

WELLPATH DATUM			
Calculation method	Minimum curvature	PATTERSON 901 (29'KB) (RKB) to Facility Vertical Datum	5299.00ft
Horizontal Reference Pt	Slot	PATTERSON 901 (29'KB) (RKB) to Mean Sea Level	5299.00ft
Vertical Reference Pt	PATTERSON 901 (29'KB) (RKB)	PATTERSON 901 (29'KB) (RKB) to Mud Line at Slot (SLOT#05 COYOTE TRAILS 34S-20-12N (1146'FSL & 2103'FEL, SEC.28))	5299.00ft
MD Reference Pt	PATTERSON 901 (29'KB) (RKB)	Section Origin	N 0.00, E 0.00 ft
Field Vertical Reference	Mean Sea Level	Section Azimuth	164.53°

REFERENCE WELLPATH IDENTIFICATION

Operator	EXTRACTION OIL & GAS	Slot	SLOT#05 COYOTE TRAILS 34S-20-12N (1146'FSL & 2103'FEL, SEC.28)
Area	COLORADO	Well	COYOTE TRAILS 34S-20-12N
Field	WELD COUNTY (NAD83/TRUE NORTH)	Wellbore	COYOTE TRAILS 34S-20-12N AWP
Facility	SEC.28-T01N-R68W		

WELLPATH DATA (178 stations)

MD [ft]	Inclination [°]	Azimuth [°]	TVD [ft]	Vert Sect [ft]	North [ft]	East [ft]	Latitude	Longitude	DLS [°/100ft]	Comments
1555.00	21.080	107.220	1527.13	115.15	-62.21	206.90	40°01'04.091"N	105°00'21.007"W	2.72	TIED ONTO SURFACE SURVEYS
1763.00	21.140	108.760	1721.18	156.45	-85.35	278.14	40°01'03.863"N	105°00'20.091"W	0.27	BAKER DRILLED USING THIRD PARTY MWD-FIRST SURVEY
1858.00	24.970	107.800	1808.57	177.09	-96.99	313.47	40°01'03.747"N	105°00'19.637"W	4.05	
1954.00	28.020	108.090	1894.48	200.68	-110.19	354.21	40°01'03.617"N	105°00'19.113"W	3.18	
2050.00	31.430	106.710	1977.84	226.48	-124.40	399.63	40°01'03.477"N	105°00'18.530"W	3.62	
2145.00	34.060	107.740	2057.73	254.25	-139.63	448.70	40°01'03.326"N	105°00'17.899"W	2.83	
2240.00	34.680	108.800	2136.15	284.04	-156.44	499.62	40°01'03.160"N	105°00'17.244"W	0.91	
2336.00	36.740	109.360	2214.09	315.82	-174.76	552.57	40°01'02.979"N	105°00'16.564"W	2.17	
2431.00	35.700	108.790	2290.73	347.65	-193.11	605.62	40°01'02.798"N	105°00'15.882"W	1.15	
2527.00	34.350	106.780	2369.35	377.88	-209.95	658.07	40°01'02.631"N	105°00'15.208"W	1.85	
2622.00	36.590	108.980	2446.72	408.20	-226.90	710.52	40°01'02.464"N	105°00'14.534"W	2.71	
2717.00	34.980	108.360	2523.78	439.38	-244.69	763.14	40°01'02.288"N	105°00'13.857"W	1.74	
2813.00	33.580	107.290	2603.10	469.07	-261.25	814.61	40°01'02.124"N	105°00'13.196"W	1.59	
2908.00	35.080	109.510	2681.56	498.94	-278.18	865.43	40°01'01.957"N	105°00'12.543"W	2.06	
3004.00	34.090	109.100	2760.59	530.02	-296.19	916.86	40°01'01.779"N	105°00'11.882"W	1.06	
3099.00	35.520	110.600	2838.60	561.37	-314.62	967.85	40°01'01.597"N	105°00'11.226"W	1.75	
3195.00	33.800	108.760	2917.56	592.82	-333.02	1019.25	40°01'01.415"N	105°00'10.566"W	2.10	
3290.00	33.990	105.990	2996.42	621.54	-348.83	1069.80	40°01'01.259"N	105°00'09.916"W	1.64	
3386.00	35.630	106.700	3075.24	650.44	-364.26	1122.38	40°01'01.106"N	105°00'09.240"W	1.76	
3481.00	33.980	106.110	3153.24	679.07	-379.58	1174.39	40°01'00.955"N	105°00'08.572"W	1.77	
3577.00	34.570	108.780	3232.57	708.45	-395.79	1225.96	40°01'00.794"N	105°00'07.909"W	1.68	
3672.00	32.430	108.300	3311.79	737.79	-412.47	1275.66	40°01'00.630"N	105°00'07.270"W	2.27	
3768.00	33.350	109.110	3392.40	767.07	-429.19	1325.04	40°01'00.464"N	105°00'06.636"W	1.06	
3863.00	36.340	110.100	3470.36	798.27	-447.42	1376.16	40°01'00.284"N	105°00'05.979"W	3.20	
3959.00	34.710	109.350	3548.49	830.43	-466.25	1428.66	40°01'00.098"N	105°00'05.304"W	1.76	
4054.00	32.330	109.000	3627.68	860.25	-483.49	1478.21	40°00'59.928"N	105°00'04.667"W	2.51	
4150.00	34.420	108.840	3707.85	890.08	-500.61	1528.16	40°00'59.758"N	105°00'04.025"W	2.18	
4245.00	31.340	107.990	3787.62	918.84	-516.91	1577.08	40°00'59.597"N	105°00'03.396"W	3.28	
4340.00	33.040	108.120	3868.01	946.79	-532.60	1625.20	40°00'59.442"N	105°00'02.778"W	1.79	
4436.00	30.480	107.820	3949.63	974.64	-548.19	1673.26	40°00'59.288"N	105°00'02.160"W	2.67	

REFERENCE WELLPATH IDENTIFICATION

Operator	EXTRACTION OIL & GAS	Slot	SLOT#05 COYOTE TRAILS 34S-20-12N (1146'FSL & 2103'FEL, SEC.28)
Area	COLORADO	Well	COYOTE TRAILS 34S-20-12N
Field	WELD COUNTY (NAD83/TRUE NORTH)	Wellbore	COYOTE TRAILS 34S-20-12N AWP
Facility	SEC.28-T01N-R68W		

WELLPATH DATA (178 stations)

MD [ft]	Inclination [°]	Azimuth [°]	TVD [ft]	Vert Sect [ft]	North [ft]	East [ft]	Latitude	Longitude	DLS [°/100ft]	Comments
4531.00	31.560	108.960	4031.04	1001.92	-563.64	1719.71	40°00'59.135"N	105°00'01.563"W	1.29	
4627.00	34.830	112.130	4111.37	1032.86	-582.14	1768.88	40°00'58.953"N	105°00'00.931"W	3.86	
4722.00	34.910	112.410	4189.32	1066.11	-602.72	1819.14	40°00'58.749"N	105°00'00.285"W	0.19	
4817.00	31.860	111.320	4268.63	1097.82	-622.21	1867.64	40°00'58.556"N	104°59'59.662"W	3.27	
4913.00	32.010	110.100	4350.10	1127.80	-640.16	1915.14	40°00'58.379"N	104°59'59.051"W	0.69	
5008.00	34.310	107.170	4429.63	1156.89	-656.72	1964.38	40°00'58.215"N	104°59'58.419"W	2.95	
5103.00	35.730	107.450	4507.43	1186.41	-672.94	2016.42	40°00'58.055"N	104°59'57.750"W	1.50	
5199.00	32.500	107.450	4586.90	1215.66	-689.09	2067.78	40°00'57.895"N	104°59'57.090"W	3.36	
5294.00	31.760	107.410	4667.35	1243.11	-704.22	2115.98	40°00'57.746"N	104°59'56.470"W	0.78	
5389.00	33.580	106.430	4747.32	1270.57	-719.14	2165.04	40°00'57.598"N	104°59'55.839"W	2.00	
5485.00	37.550	104.730	4825.39	1299.32	-734.09	2218.82	40°00'57.451"N	104°59'55.148"W	4.26	
5580.00	35.610	102.760	4901.68	1326.97	-747.56	2273.80	40°00'57.317"N	104°59'54.442"W	2.39	
5676.00	35.620	105.540	4979.73	1354.59	-761.22	2328.00	40°00'57.182"N	104°59'53.745"W	1.69	
5771.00	37.010	110.470	5056.29	1385.64	-778.64	2381.45	40°00'57.010"N	104°59'53.058"W	3.40	
5866.00	36.290	110.550	5132.51	1418.95	-798.51	2434.57	40°00'56.814"N	104°59'52.376"W	0.76	
5962.00	32.350	108.420	5211.78	1449.99	-816.60	2485.56	40°00'56.635"N	104°59'51.720"W	4.29	
6057.00	33.640	107.550	5291.46	1478.51	-832.57	2534.76	40°00'56.477"N	104°59'51.088"W	1.45	
6177.00	39.940	106.910	5387.51	1517.29	-853.82	2603.38	40°00'56.267"N	104°59'50.206"W	5.26	
6272.00	37.520	103.200	5461.63	1547.50	-869.30	2660.74	40°00'56.114"N	104°59'49.469"W	3.53	
6367.00	35.430	100.900	5538.02	1573.62	-881.11	2715.95	40°00'55.997"N	104°59'48.759"W	2.63	
6463.00	30.420	99.390	5618.57	1596.21	-890.35	2767.29	40°00'55.906"N	104°59'48.099"W	5.29	
6558.00	26.770	99.990	5701.97	1615.52	-897.99	2812.10	40°00'55.830"N	104°59'47.523"W	3.85	
6654.00	23.520	103.770	5788.87	1634.18	-906.30	2852.01	40°00'55.748"N	104°59'47.010"W	3.77	
6749.00	20.800	108.560	5876.85	1652.88	-916.18	2886.42	40°00'55.650"N	104°59'46.568"W	3.44	
6845.00	18.710	108.490	5967.20	1671.03	-926.49	2917.18	40°00'55.548"N	104°59'46.173"W	2.18	
6940.00	18.320	107.860	6057.28	1687.74	-935.90	2945.85	40°00'55.455"N	104°59'45.804"W	0.46	
7036.00	14.740	104.450	6149.30	1702.13	-943.58	2972.04	40°00'55.380"N	104°59'45.468"W	3.86	
7131.00	15.050	106.020	6241.11	1714.60	-950.00	2995.60	40°00'55.316"N	104°59'45.165"W	0.54	
7227.00	12.040	103.700	6334.43	1725.99	-955.81	3017.31	40°00'55.259"N	104°59'44.886"W	3.19	
7322.00	10.240	105.910	6427.63	1735.22	-960.47	3035.06	40°00'55.212"N	104°59'44.658"W	1.95	

REFERENCE WELLPATH IDENTIFICATION

Operator	EXTRACTION OIL & GAS	Slot	SLOT#05 COYOTE TRAILS 34S-20-12N (1146'FSL & 2103'FEL, SEC.28)
Area	COLORADO	Well	COYOTE TRAILS 34S-20-12N
Field	WELD COUNTY (NAD83/TRUE NORTH)	Wellbore	COYOTE TRAILS 34S-20-12N AWP
Facility	SEC.28-T01N-R68W		

WELLPATH DATA (178 stations) † = interpolated/extrapolated station

MD [ft]	Inclination [°]	Azimuth [°]	TVD [ft]	Vert Sect [ft]	North [ft]	East [ft]	Latitude	Longitude	DLS [°/100ft]	Comments
7417.00	7.820	104.330	6521.45	1742.83	-964.39	3049.45	40°00'55.174"N	104°59'44.473"W	2.56	
7513.00	7.090	112.580	6616.64	1749.73	-968.28	3061.24	40°00'55.135"N	104°59'44.321"W	1.35	
7609.00	5.420	115.240	6712.07	1756.34	-972.49	3070.82	40°00'55.094"N	104°59'44.198"W	1.77	
7704.00	4.450	109.410	6806.71	1761.37	-975.63	3078.35	40°00'55.063"N	104°59'44.101"W	1.15	
7800.00	1.590	119.000	6902.57	1764.43	-977.51	3083.03	40°00'55.044"N	104°59'44.041"W	3.01	
7896.00	1.150	122.200	6998.54	1766.08	-978.67	3085.01	40°00'55.033"N	104°59'44.016"W	0.47	
7991.00	0.800	117.150	7093.53	1767.23	-979.48	3086.41	40°00'55.025"N	104°59'43.998"W	0.38	
8087.00	10.860	168.550	7188.92	1776.73	-988.68	3088.80	40°00'54.934"N	104°59'43.967"W	10.81	
8182.00	18.440	175.550	7280.78	1800.45	-1012.46	3091.75	40°00'54.699"N	104°59'43.929"W	8.18	
8277.00	27.370	179.190	7368.20	1836.39	-1049.35	3093.23	40°00'54.334"N	104°59'43.910"W	9.51	
8373.00	36.190	176.340	7449.73	1885.59	-1099.81	3095.35	40°00'53.835"N	104°59'43.883"W	9.32	
8469.00	43.930	180.520	7523.17	1945.44	-1161.50	3096.86	40°00'53.226"N	104°59'43.864"W	8.53	
8564.00	50.490	181.600	7587.67	2012.23	-1231.16	3095.54	40°00'52.537"N	104°59'43.881"W	6.96	
8659.00	58.630	180.020	7642.71	2086.47	-1308.48	3094.50	40°00'51.773"N	104°59'43.894"W	8.67	
8755.00	67.060	179.190	7686.48	2168.88	-1393.82	3095.11	40°00'50.930"N	104°59'43.887"W	8.81	
8851.00	75.970	180.600	7716.89	2256.58	-1484.77	3095.25	40°00'50.031"N	104°59'43.885"W	9.38	
8946.00	83.840	183.200	7733.53	2345.75	-1578.17	3092.13	40°00'49.108"N	104°59'43.925"W	8.71	
8953.00†	84.187	183.187	7734.26	2352.35	-1585.12	3091.74	40°00'49.040"N	104°59'43.930"W	4.96	CROSSED 460'SETBACK (460'FNL & 986'FWL, SEC.34)
9042.00	88.600	183.020	7739.86	2436.53	-1673.79	3086.93	40°00'48.163"N	104°59'43.992"W	4.96	
9137.00	88.660	182.830	7742.13	2526.65	-1768.64	3082.09	40°00'47.226"N	104°59'44.055"W	0.21	
9233.00	88.960	182.410	7744.12	2617.88	-1864.52	3077.70	40°00'46.278"N	104°59'44.111"W	0.54	
9328.00	88.600	181.630	7746.15	2708.47	-1959.44	3074.35	40°00'45.340"N	104°59'44.154"W	0.90	
9424.00	88.730	181.700	7748.38	2800.18	-2055.37	3071.56	40°00'44.392"N	104°59'44.190"W	0.15	
9519.00	88.770	180.860	7750.46	2891.13	-2150.32	3069.44	40°00'43.454"N	104°59'44.218"W	0.89	
9615.00	88.570	180.770	7752.68	2983.25	-2246.29	3068.07	40°00'42.506"N	104°59'44.236"W	0.23	
9710.00	88.160	181.010	7755.40	3074.37	-2341.24	3066.60	40°00'41.567"N	104°59'44.255"W	0.50	
9806.00	90.760	180.050	7756.30	3166.64	-2437.22	3065.71	40°00'40.619"N	104°59'44.266"W	2.89	
9901.00	90.770	179.760	7755.03	3258.23	-2532.21	3065.87	40°00'39.680"N	104°59'44.264"W	0.31	
9996.00	90.660	179.900	7753.85	3349.86	-2627.20	3066.15	40°00'38.741"N	104°59'44.261"W	0.19	
10092.00	91.010	179.470	7752.45	3442.51	-2723.19	3066.68	40°00'37.793"N	104°59'44.254"W	0.58	

REFERENCE WELLPATH IDENTIFICATION			
Operator	EXTRACTION OIL & GAS	Slot	SLOT#05 COYOTE TRAILS 34S-20-12N (1146'FSL & 2103'FEL, SEC.28)
Area	COLORADO	Well	COYOTE TRAILS 34S-20-12N
Field	WELD COUNTY (NAD83/TRUE NORTH)	Wellbore	COYOTE TRAILS 34S-20-12N AWP
Facility	SEC.28-T01N-R68W		

WELLPATH DATA (178 stations)										
MD [ft]	Inclination [°]	Azimuth [°]	TVD [ft]	Vert Sect [ft]	North [ft]	East [ft]	Latitude	Longitude	DLS [°/100ft]	Comments
10187.00	90.000	179.370	7751.61	3534.31	-2818.18	3067.64	40°00'36.854"N	104°59'44.242"W	1.07	
10283.00	90.240	180.030	7751.41	3626.97	-2914.18	3068.14	40°00'35.905"N	104°59'44.236"W	0.73	
10379.00	89.880	181.030	7751.31	3719.25	-3010.17	3067.26	40°00'34.957"N	104°59'44.247"W	1.11	
10474.00	87.870	181.740	7753.17	3810.14	-3105.12	3064.96	40°00'34.018"N	104°59'44.277"W	2.24	
10570.00	88.210	180.580	7756.46	3902.07	-3201.04	3063.02	40°00'33.070"N	104°59'44.302"W	1.26	
10665.00	87.640	179.790	7759.90	3993.49	-3295.98	3062.71	40°00'32.132"N	104°59'44.306"W	1.02	
10761.00	90.450	178.950	7761.50	4086.26	-3391.95	3063.77	40°00'31.184"N	104°59'44.293"W	3.06	
10856.00	91.410	178.020	7759.95	4178.44	-3486.90	3066.28	40°00'30.246"N	104°59'44.261"W	1.41	
10952.00	89.700	178.510	7759.02	4271.69	-3582.85	3069.18	40°00'29.297"N	104°59'44.223"W	1.85	
11047.00	88.220	178.470	7760.75	4363.87	-3677.80	3071.69	40°00'28.359"N	104°59'44.191"W	1.56	
11143.00	87.830	177.420	7764.06	4457.19	-3773.68	3075.13	40°00'27.412"N	104°59'44.147"W	1.17	
11239.00	86.920	176.810	7768.45	4550.78	-3869.45	3079.95	40°00'26.465"N	104°59'44.086"W	1.14	
11334.00	87.610	177.980	7772.99	4643.29	-3964.25	3084.27	40°00'25.528"N	104°59'44.030"W	1.43	
11430.00	87.350	177.890	7777.21	4736.59	-4060.09	3087.72	40°00'24.581"N	104°59'43.986"W	0.29	
11525.00	89.410	179.670	7779.89	4828.62	-4155.02	3089.74	40°00'23.643"N	104°59'43.960"W	2.87	
11620.00	89.580	178.970	7780.73	4920.47	-4250.01	3090.87	40°00'22.704"N	104°59'43.946"W	0.76	
11716.00	89.600	178.890	7781.42	5013.45	-4345.99	3092.66	40°00'21.756"N	104°59'43.923"W	0.09	
11811.00	89.790	180.300	7781.92	5105.18	-4440.99	3093.33	40°00'20.817"N	104°59'43.914"W	1.50	
11907.00	89.790	180.300	7782.28	5197.57	-4536.98	3092.83	40°00'19.868"N	104°59'43.921"W	0.00	
12003.00	89.940	180.000	7782.50	5290.02	-4632.98	3092.58	40°00'18.920"N	104°59'43.924"W	0.35	
12098.00	89.930	179.370	7782.61	5381.72	-4727.98	3093.10	40°00'17.981"N	104°59'43.918"W	0.66	
12193.00	89.930	179.370	7782.73	5473.55	-4822.97	3094.15	40°00'17.042"N	104°59'43.905"W	0.00	
12289.00	90.630	178.800	7782.26	5566.46	-4918.96	3095.68	40°00'16.093"N	104°59'43.885"W	0.94	
12384.00	90.660	178.290	7781.19	5658.63	-5013.92	3098.09	40°00'15.155"N	104°59'43.854"W	0.54	
12480.00	89.700	179.420	7780.89	5751.64	-5109.90	3100.01	40°00'14.207"N	104°59'43.830"W	1.54	
12575.00	89.820	179.150	7781.28	5843.51	-5204.89	3101.20	40°00'13.268"N	104°59'43.815"W	0.31	
12671.00	88.590	181.120	7782.62	5935.95	-5300.88	3100.97	40°00'12.319"N	104°59'43.818"W	2.42	
12766.00	88.370	180.870	7785.14	6027.03	-5395.83	3099.32	40°00'11.381"N	104°59'43.839"W	0.35	
12862.00	88.250	180.680	7787.97	6119.15	-5491.78	3098.02	40°00'10.433"N	104°59'43.856"W	0.23	
12957.00	88.460	180.730	7790.69	6210.36	-5586.73	3096.85	40°00'09.494"N	104°59'43.871"W	0.23	

REFERENCE WELLPATH IDENTIFICATION			
Operator	EXTRACTION OIL & GAS	Slot	SLOT#05 COYOTE TRAILS 34S-20-12N (1146'FSL & 2103'FEL, SEC.28)
Area	COLORADO	Well	COYOTE TRAILS 34S-20-12N
Field	WELD COUNTY (NAD83/TRUE NORTH)	Wellbore	COYOTE TRAILS 34S-20-12N AWP
Facility	SEC.28-T01N-R68W		

WELLPATH DATA (178 stations)										
MD [ft]	Inclination [°]	Azimuth [°]	TVD [ft]	Vert Sect [ft]	North [ft]	East [ft]	Latitude	Longitude	DLS [°/100ft]	Comments
13053.00	88.710	180.590	7793.07	6302.55	-5682.70	3095.75	40°00'08.546"N	104°59'43.885"W	0.30	
13148.00	89.050	180.400	7794.92	6393.87	-5777.67	3094.93	40°00'07.607"N	104°59'43.896"W	0.41	
13244.00	90.770	179.940	7795.07	6486.31	-5873.67	3094.64	40°00'06.659"N	104°59'43.900"W	1.85	
13339.00	91.120	179.590	7793.51	6577.96	-5968.66	3095.03	40°00'05.720"N	104°59'43.895"W	0.52	
13435.00	89.550	180.480	7792.94	6670.46	-6064.65	3094.97	40°00'04.771"N	104°59'43.896"W	1.88	
13530.00	89.640	180.270	7793.62	6761.85	-6159.65	3094.35	40°00'03.833"N	104°59'43.904"W	0.24	
13626.00	89.110	180.450	7794.66	6854.20	-6255.64	3093.75	40°00'02.884"N	104°59'43.912"W	0.58	
13721.00	89.350	180.340	7795.94	6945.57	-6350.63	3093.09	40°00'01.945"N	104°59'43.921"W	0.28	
13817.00	89.510	179.740	7796.90	7038.07	-6446.62	3093.03	40°00'00.997"N	104°59'43.922"W	0.65	
13912.00	89.790	179.750	7797.48	7129.74	-6541.62	3093.45	40°00'00.058"N	104°59'43.916"W	0.29	
14008.00	89.980	179.380	7797.67	7222.45	-6637.62	3094.18	39°59'59.109"N	104°59'43.907"W	0.43	
14199.00	91.010	178.260	7796.02	7407.53	-6828.56	3098.11	39°59'57.222"N	104°59'43.857"W	0.80	
14294.00	89.780	180.170	7795.36	7499.42	-6923.54	3099.41	39°59'56.284"N	104°59'43.840"W	2.39	
14390.00	89.540	179.030	7795.93	7592.12	-7019.54	3100.08	39°59'55.335"N	104°59'43.832"W	1.21	
14485.00	89.560	177.840	7796.68	7684.33	-7114.50	3102.68	39°59'54.396"N	104°59'43.799"W	1.25	
14581.00	88.050	179.950	7798.68	7777.30	-7210.45	3104.53	39°59'53.448"N	104°59'43.775"W	2.70	
14676.00	90.540	180.310	7799.85	7868.78	-7305.44	3104.31	39°59'52.510"N	104°59'43.778"W	2.65	
14771.00	90.670	179.130	7798.85	7960.46	-7400.43	3104.78	39°59'51.571"N	104°59'43.772"W	1.25	
14867.00	90.870	178.230	7797.56	8053.54	-7496.39	3106.99	39°59'50.622"N	104°59'43.744"W	0.96	
14962.00	90.760	177.620	7796.21	8145.94	-7591.32	3110.43	39°59'49.684"N	104°59'43.700"W	0.65	
15058.00	89.990	178.210	7795.58	8239.33	-7687.25	3113.92	39°59'48.736"N	104°59'43.655"W	1.01	
15153.00	90.920	179.860	7794.82	8331.30	-7782.23	3115.52	39°59'47.798"N	104°59'43.635"W	1.99	
15249.00	90.790	181.970	7793.39	8423.38	-7878.21	3113.99	39°59'46.849"N	104°59'43.655"W	2.20	
15345.00	90.730	182.050	7792.12	8514.94	-7974.14	3110.62	39°59'45.901"N	104°59'43.698"W	0.10	
15440.00	90.820	181.750	7790.83	8605.60	-8069.08	3107.47	39°59'44.963"N	104°59'43.739"W	0.33	
15536.00	90.570	181.500	7789.67	8697.35	-8165.03	3104.75	39°59'44.015"N	104°59'43.774"W	0.37	
15631.00	90.920	180.900	7788.43	8788.35	-8260.00	3102.76	39°59'43.076"N	104°59'43.799"W	0.73	
15726.00	89.710	181.490	7787.91	8879.36	-8354.98	3100.78	39°59'42.138"N	104°59'43.825"W	1.42	
15822.00	89.900	181.290	7788.24	8971.23	-8450.95	3098.45	39°59'41.189"N	104°59'43.855"W	0.29	
15917.00	89.740	181.330	7788.53	9062.19	-8545.92	3096.28	39°59'40.251"N	104°59'43.883"W	0.17	



Actual Wellpath Report

COYOTE TRAILS 34S-20-12N AWP

Page 7 of 10



REFERENCE WELLPATH IDENTIFICATION			
Operator	EXTRACTION OIL & GAS	Slot	SLOT#05 COYOTE TRAILS 34S-20-12N (1146'FSL & 2103'FEL, SEC.28)
Area	COLORADO	Well	COYOTE TRAILS 34S-20-12N
Field	WELD COUNTY (NAD83/TRUE NORTH)	Wellbore	COYOTE TRAILS 34S-20-12N AWP
Facility	SEC.28-T01N-R68W		

WELLPATH DATA (178 stations)										
MD (ft)	Inclination (°)	Azimuth (°)	TVD (ft)	Vert Sect (ft)	North (ft)	East (ft)	Latitude	Longitude	DLS (°/100ft)	Comments
16013.00	89.960	181.450	7788.79	9154.06	-8641.89	3093.95	39°59'39.302"N	104°59'43.913"W	0.26	
16108.00	90.840	181.540	7788.12	9244.92	-8736.86	3091.47	39°59'38.364"N	104°59'43.945"W	0.93	
16203.00	90.420	181.060	7787.08	9335.88	-8831.83	3089.32	39°59'37.425"N	104°59'43.973"W	0.67	
16299.00	90.850	180.570	7786.01	9428.02	-8927.81	3087.95	39°59'36.477"N	104°59'43.991"W	0.68	
16394.00	91.180	180.090	7784.33	9519.41	-9022.80	3087.40	39°59'35.538"N	104°59'43.998"W	0.61	
16490.00	89.490	180.610	7783.77	9611.77	-9118.79	3086.82	39°59'34.589"N	104°59'44.006"W	1.84	
16585.00	89.600	180.380	7784.52	9703.11	-9213.78	3086.00	39°59'33.651"N	104°59'44.016"W	0.27	
16680.00	89.860	180.270	7784.97	9794.52	-9308.78	3085.46	39°59'32.712"N	104°59'44.023"W	0.30	
16776.00	90.250	179.530	7784.88	9887.08	-9404.78	3085.63	39°59'31.763"N	104°59'44.021"W	0.87	
16872.00	88.680	179.470	7785.78	9979.82	-9500.77	3086.46	39°59'30.815"N	104°59'44.011"W	1.64	
16967.00	88.890	179.390	7787.79	10071.60	-9595.74	3087.41	39°59'29.876"N	104°59'43.999"W	0.24	
17062.00	89.000	178.850	7789.54	10163.52	-9690.71	3088.87	39°59'28.938"N	104°59'43.980"W	0.58	
17158.00	89.600	179.970	7790.71	10256.30	-9786.70	3089.86	39°59'27.989"N	104°59'43.968"W	1.32	
17253.00	89.780	179.800	7791.23	10347.90	-9881.70	3090.05	39°59'27.050"N	104°59'43.965"W	0.26	
17349.00	89.660	179.920	7791.70	10440.49	-9977.70	3090.28	39°59'26.101"N	104°59'43.963"W	0.18	
17445.00	90.050	179.500	7791.94	10533.14	-10073.69	3090.77	39°59'25.153"N	104°59'43.956"W	0.60	
17540.00	90.120	179.240	7791.80	10624.97	-10168.69	3091.81	39°59'24.214"N	104°59'43.943"W	0.28	
17635.00	90.560	178.890	7791.23	10716.93	-10263.67	3093.36	39°59'23.275"N	104°59'43.923"W	0.59	
17730.00	90.660	178.330	7790.22	10809.07	-10358.64	3095.67	39°59'22.337"N	104°59'43.894"W	0.60	
17826.00	91.160	178.360	7788.70	10902.28	-10454.59	3098.44	39°59'21.389"N	104°59'43.859"W	0.52	
17921.00	90.840	178.800	7787.04	10994.42	-10549.54	3100.79	39°59'20.450"N	104°59'43.828"W	0.57	
18017.00	90.790	178.690	7785.67	11087.47	-10645.51	3102.89	39°59'19.502"N	104°59'43.802"W	0.13	
18112.00	89.830	180.070	7785.16	11179.29	-10740.50	3103.92	39°59'18.563"N	104°59'43.789"W	1.77	
18208.00	90.180	179.740	7785.15	11271.86	-10836.50	3104.08	39°59'17.614"N	104°59'43.787"W	0.50	
18303.00	90.620	179.470	7784.49	11363.59	-10931.49	3104.74	39°59'16.676"N	104°59'43.778"W	0.54	
18398.00	91.030	179.220	7783.12	11455.42	-11026.48	3105.82	39°59'15.737"N	104°59'43.765"W	0.51	
18494.00	91.490	179.120	7781.01	11548.28	-11122.44	3107.21	39°59'14.789"N	104°59'43.747"W	0.49	BAKER DRILLED USING THIRD PARTY MWD-LAST SURVEY (285'FSL & 488'FWL, SEC.03)
18605.00	91.490	179.120	7778.12	11655.66	-11233.39	3108.92	39°59'13.692"N	104°59'43.725"W	0.00	PROJECTION TO BIT (174'FSL & 490'FWL, SEC.03)

REFERENCE WELLPATH IDENTIFICATION			
Operator	EXTRACTION OIL & GAS	Slot	SLOT#05 COYOTE TRAILS 34S-20-12N (1146'FSL & 2103'FEL, SEC.28)
Area	COLORADO	Well	COYOTE TRAILS 34S-20-12N
Field	WELD COUNTY (NAD83/TRUE NORTH)	Wellbore	COYOTE TRAILS 34S-20-12N AWP
Facility	SEC.28-T01N-R68W		

TARGETS								
Name	TVD [ft]	North [ft]	East [ft]	Grid East [US ft]	Grid North [US ft]	Latitude	Longitude	Shape
SEC.03-T01S-R68W	-4.00	-0.30	71.97	3138269.92	1249778.85	40°01'04.703"N	105°00'22.741"W	polygon
SEC.04-T01S-R68W	-4.00	-0.30	71.97	3138269.92	1249778.85	40°01'04.703"N	105°00'22.741"W	polygon
SEC.27-T01N-R68W	-4.00	-0.30	71.97	3138269.92	1249778.85	40°01'04.703"N	105°00'22.741"W	point
SEC.28-T01N-R68W	-4.00	-0.30	71.97	3138269.92	1249778.85	40°01'04.703"N	105°00'22.741"W	polygon
SEC.33-T01N-R68W	-4.00	-0.30	71.97	3138269.92	1249778.85	40°01'04.703"N	105°00'22.741"W	polygon
SEC.34-T01N-R68W	-4.00	-0.30	71.97	3138269.92	1249778.85	40°01'04.703"N	105°00'22.741"W	polygon
COYOTE TRAILS 34S-20-12N BHL REV-2 (150'FSL & 476'FWL, SEC.03)	7735.00	-11256.97	3095.25	3141355.67	1238539.59	39°59'13.459"N	104°59'43.901"W	point
COYOTE TRAILS 34S-20-12N LP REV-2 (460'FNL & 976'FWL, SEC.34)	7735.00	-1582.60	3081.44	3141288.03	1248213.38	40°00'49.064"N	104°59'44.063"W	point
COYOTE TRAILS 34S-20-12N BHL (150'FSL & 476'FWL, SEC.03)	7807.00	-11256.98	3095.25	3141355.67	1238539.59	39°59'13.459"N	104°59'43.901"W	point
COYOTE TRAILS 34S-20-12N LP (460'FNL & 976'FWL, SEC.34)	7807.00	-1582.60	3081.44	3141288.03	1248213.38	40°00'49.064"N	104°59'44.063"W	point
SEC.03-T01S-R68W (150'FSL SETBACKS)	7896.00	-0.30	71.97	3138269.92	1249778.85	40°01'04.703"N	105°00'22.741"W	polygon
SEC.34-T01N-R68W (460'FNL SETBACKS)	7896.00	-0.30	71.97	3138269.92	1249778.85	40°01'04.703"N	105°00'22.741"W	polygon

REFERENCE WELLPATH IDENTIFICATION			
Operator	EXTRACTION OIL & GAS	Slot	SLOT#05 COYOTE TRAILS 34S-20-12N (1146'FSL & 2103'FEL, SEC.28)
Area	COLORADO	Well	COYOTE TRAILS 34S-20-12N
Field	WELD COUNTY (NAD83/TRUE NORTH)	Wellbore	COYOTE TRAILS 34S-20-12N AWB
Facility	SEC.28-T01N-R68W		

WELLPATH COMPOSITION - Ref Wellbore: COYOTE TRAILS 34S-20-12N AWB Ref Wellpath: COYOTE TRAILS 34S-20-12N AWP				
Start MD [ft]	End MD [ft]	Positional Uncertainty Model	Log Name/Comment	Wellbore
29.00	1555.00	ISCWSA MWD, Rev. 4 (Standard)	INTEGRITY DIRECTIONAL SURVEYS <224-1555>	COYOTE TRAILS 34S-20-12N AWB
1555.00	18494.00	ISCWSA MWD, Rev. 4 (Standard)	BAKER DRILLED USING THIRD PARTY MWD <1763-18494>	COYOTE TRAILS 34S-20-12N AWB
18494.00	18605.00	Blind Drilling (std)	Projection to bit	COYOTE TRAILS 34S-20-12N AWB

REFERENCE WELLPATH IDENTIFICATION			
Operator	EXTRACTION OIL & GAS	Slot	SLOT#05 COYOTE TRAILS 34S-20-12N (1146'FSL & 2103'FEL, SEC.28)
Area	COLORADO	Well	COYOTE TRAILS 34S-20-12N
Field	WELD COUNTY (NAD83/TRUE NORTH)	Wellbore	COYOTE TRAILS 34S-20-12N AWB
Facility	SEC.28-T01N-R68W		

WELLPATH COMMENTS				
MD [ft]	Inclination [°]	Azimuth [°]	TVD [ft]	Comment
1555.00	21.080	107.220	1527.13	TIED ONTO SURFACE SURVEYS
1763.00	21.140	108.760	1721.18	BAKER DRILLED USING THIRD PARTY MWD-FIRST SURVEY
8953.00	84.187	183.187	7734.26	CROSSED 460'SETBACK (460'FNL & 986'FWL, SEC.34)
18494.00	91.490	179.120	7781.01	BAKER DRILLED USING THIRD PARTY MWD-LAST SURVEY (285'FSL & 488'FWL, SEC.03)
18605.00	91.490	179.120	7778.12	PROJECTION TO BIT (174'FSL & 490'FWL, SEC.03)