

EXTRACTION OIL & GAS

Location: COLORADO Slot: SLOT#09 COYOTE TRAILS 34S-20-8C (1147'FSL & 2175'FEL, SEC.28)
Field: WELD COUNTY (NAD83/TRUE NORTH) Well: COYOTE TRAILS 34S-20-8C
Facility: SEC.28-T01N-R68W Wellbore: COYOTE TRAILS 34S-20-8C PWB

Plot reference wellpath is COYOTE TRAILS 34S-20-8C PWP (REV-C.0)

True vertical depths are referenced to PATTERSON 901 (29KB) (RKB)

Measured depths are referenced to PATTERSON 901 (29KB) (RKB)

PATTERSON 901 (29KB) (RKB) to Mean Sea Level: 5299 feet

Mean Sea Level to Mud line (At Slot: SLOT#09 COYOTE TRAILS 34S-20-8C (1147'FSL & 2175'FEL, SEC.28): 0 feet

Coordinates are in feet referenced to Slot

Grid System: NAD83 / Lambert Colorado SP, Northern Zone (501), US feet

* = Wellpath was transformed from a different geodetic datum

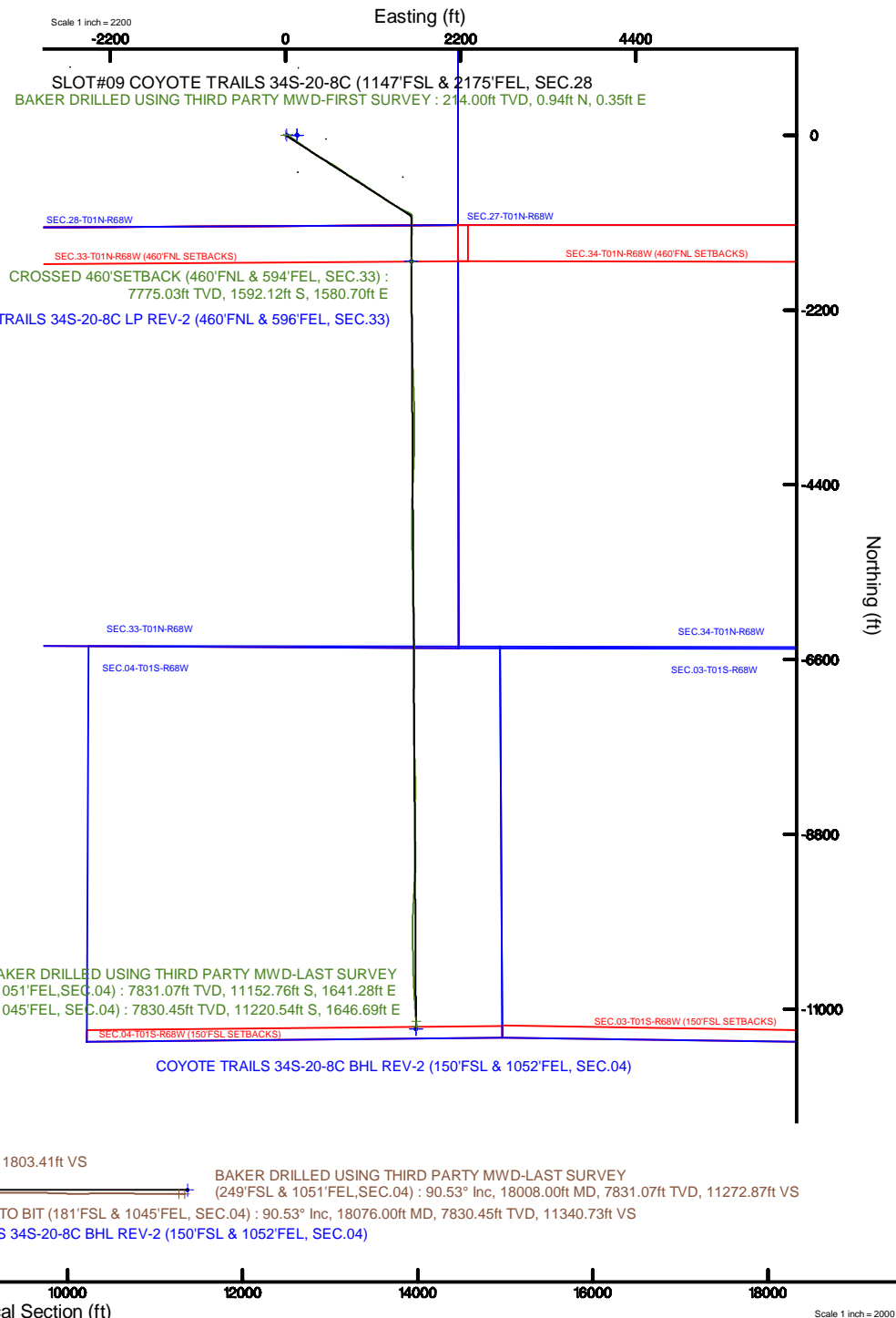
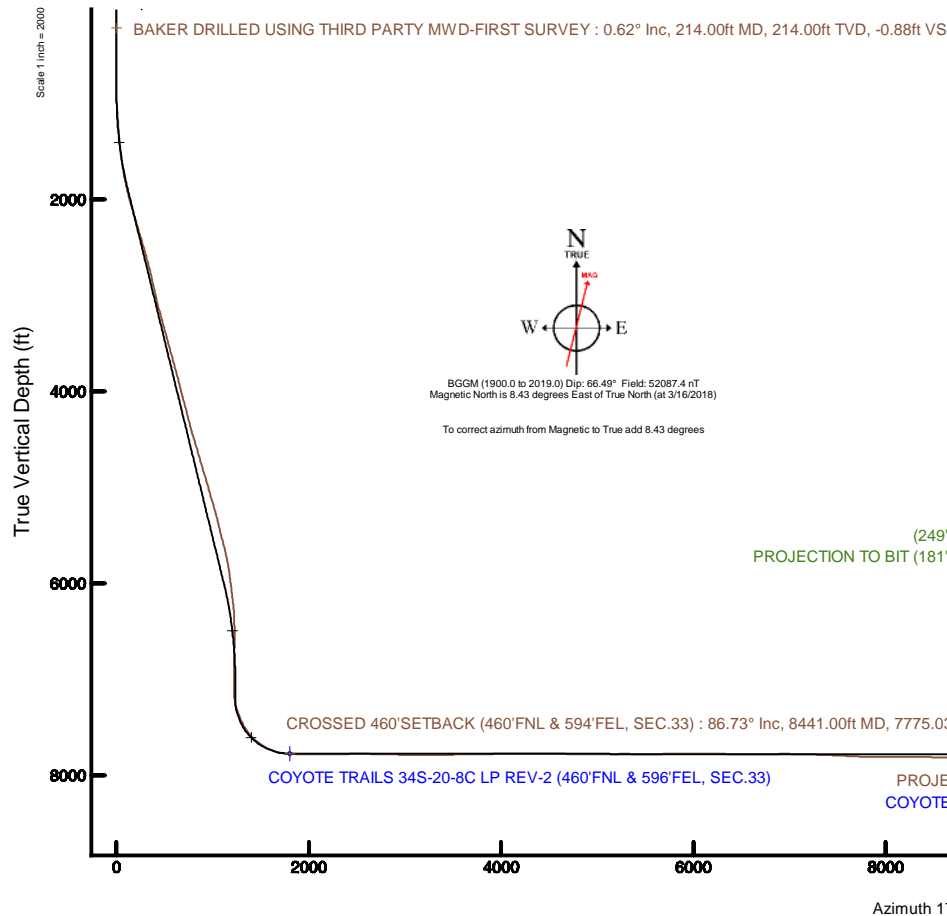
North Reference: True north

Scale: True distance

Depths are in feet

Created by: ingnjamr on 2018-04-25

Database: Denver





Actual Wellpath Report

COYOTE TRAILS 34S-20-8C AWP

Page 1 of 10



REFERENCE WELLPATH IDENTIFICATION			
Operator	EXTRACTION OIL & GAS	Slot	SLOT#09 COYOTE TRAILS 34S-20-8C (1147'FSL & 2175'FEL, SEC.28
Area	COLORADO	Well	COYOTE TRAILS 34S-20-8C
Field	WELD COUNTY (NAD83/TRUE NORTH)	Wellbore	COYOTE TRAILS 34S-20-8C AWP
Facility	SEC.28-T01N-R68W		

REPORT SETUP INFORMATION			
Projection System	NAD83 / Lambert Colorado SP, Northern Zone (501), US feet	Software System	WellArchitect® 5.0
North Reference	True	User	Ingmjmr
Scale	0.999965	Report Generated	4/25/2018 at 1:39:56 PM
Convergence at slot	0.32° East	Database/Source file	Denver/COYOTE_TRAILS_34S-20-8C_AWP.xml

WELLPATH LOCATION						
	Local coordinates		Grid coordinates		Geographic coordinates	
	North[ft]	East[ft]	Easting[US ft]	Northing[US ft]	Latitude	Longitude
Slot Location	0.71	-144.01	3138125.91	1249778.76	40°01'04.710"N	105°00'24.592"W
Facility Reference Pt			3138269.92	1249778.85	40°01'04.703"N	105°00'22.741"W
Field Reference Pt			3185481.27	1419166.81	40°28'55.560"N	104°49'59.556"W

WELLPATH DATUM			
Calculation method	Minimum curvature	PATTERSON 901 (29'KB) (RKB) to Facility Vertical Datum	5299.00ft
Horizontal Reference Pt	Slot	PATTERSON 901 (29'KB) (RKB) to Mean Sea Level	5299.00ft
Vertical Reference Pt	PATTERSON 901 (29'KB) (RKB)	PATTERSON 901 (29'KB) (RKB) to Mud Line at Slot (SLOT#09 COYOTE TRAILS 34S-20-8C (1147'FSL & 2175'FEL, SEC.28)	5299.00ft
MD Reference Pt	PATTERSON 901 (29'KB) (RKB)	Section Origin	N 0.00, E 0.00 ft
Field Vertical Reference	Mean Sea Level	Section Azimuth	171.71°



Actual Wellpath Report

COYOTE TRAILS 34S-20-8C AWP

Page 2 of 10



REFERENCE WELLPATH IDENTIFICATION

Operator	EXTRACTION OIL & GAS	Slot	SLOT#09 COYOTE TRAILS 34S-20-8C (1147'FSL & 2175'FEL, SEC.28
Area	COLORADO	Well	COYOTE TRAILS 34S-20-8C
Field	WELD COUNTY (NAD83/TRUE NORTH)	Wellbore	COYOTE TRAILS 34S-20-8C AWB
Facility	SEC.28-T01N-R68W		

WELLPATH DATA (191 stations) † = interpolated/extrapolated station

MD [ft]	Inclination [°]	Azimuth [°]	TVD [ft]	Vert Sect [ft]	North [ft]	East [ft]	Latitude	Longitude	DLS [°/100ft]	Comments
0.00†	0.000	20.650	0.00	0.00	0.00	0.00	40°01'04.710"N	105°00'24.592"W	0.00	
29.00	0.000	20.650	29.00	0.00	0.00	0.00	40°01'04.710"N	105°00'24.592"W	0.00	
214.00	0.620	20.650	214.00	-0.88	0.94	0.35	40°01'04.719"N	105°00'24.587"W	0.34	BAKER DRILLED USING THIRD PARTY MWD-FIRST SURVEY
305.00	0.710	30.430	304.99	-1.75	1.88	0.81	40°01'04.729"N	105°00'24.582"W	0.16	
401.00	0.710	47.130	400.98	-2.55	2.80	1.55	40°01'04.738"N	105°00'24.572"W	0.21	
496.00	0.400	49.730	495.98	-3.06	3.42	2.23	40°01'04.744"N	105°00'24.563"W	0.33	
592.00	0.620	21.660	591.97	-3.69	4.12	2.68	40°01'04.751"N	105°00'24.558"W	0.34	
687.00	0.620	27.960	686.97	-4.55	5.05	3.11	40°01'04.760"N	105°00'24.552"W	0.07	
782.00	1.190	85.560	781.96	-4.89	5.58	4.34	40°01'04.765"N	105°00'24.536"W	1.06	
878.00	3.000	106.530	877.89	-3.77	4.94	7.74	40°01'04.759"N	105°00'24.493"W	2.02	
973.00	4.600	133.460	972.69	0.26	1.61	12.89	40°01'04.726"N	105°00'24.426"W	2.48	
1069.00	5.080	129.450	1068.34	6.43	-3.74	18.96	40°01'04.673"N	105°00'24.348"W	0.61	
1164.00	6.010	122.220	1162.90	12.78	-9.06	26.42	40°01'04.620"N	105°00'24.252"W	1.22	
1259.00	6.810	114.820	1257.31	19.08	-14.08	35.74	40°01'04.571"N	105°00'24.133"W	1.21	
1355.00	8.710	117.640	1352.42	26.46	-19.84	47.35	40°01'04.514"N	105°00'23.983"W	2.02	
1450.00	9.990	118.260	1446.16	35.59	-27.08	60.98	40°01'04.442"N	105°00'23.808"W	1.35	
1545.00	12.110	120.460	1539.39	46.73	-36.03	76.83	40°01'04.354"N	105°00'23.605"W	2.27	
1661.00	12.280	121.950	1652.78	62.32	-48.73	97.78	40°01'04.228"N	105°00'23.335"W	0.31	
1757.00	14.630	128.600	1746.14	77.77	-61.70	115.92	40°01'04.100"N	105°00'23.102"W	2.93	
1852.00	17.070	125.470	1837.52	96.17	-77.28	136.66	40°01'03.946"N	105°00'22.836"W	2.72	
1948.00	20.050	125.100	1928.52	117.23	-94.92	161.60	40°01'03.772"N	105°00'22.515"W	3.11	
2043.00	22.390	123.720	2017.07	140.53	-114.33	189.98	40°01'03.580"N	105°00'22.150"W	2.52	
2138.00	21.960	126.010	2105.05	165.04	-134.82	219.40	40°01'03.378"N	105°00'21.772"W	1.02	
2234.00	23.610	126.120	2193.55	191.04	-156.70	249.45	40°01'03.161"N	105°00'21.386"W	1.72	
2329.00	23.080	124.940	2280.78	217.10	-178.58	280.08	40°01'02.945"N	105°00'20.992"W	0.74	
2425.00	23.780	125.610	2368.86	243.41	-200.63	311.24	40°01'02.727"N	105°00'20.592"W	0.78	
2520.00	22.480	125.450	2456.22	269.25	-222.32	341.61	40°01'02.513"N	105°00'20.201"W	1.37	
2615.00	22.970	123.870	2543.85	294.25	-243.18	371.80	40°01'02.307"N	105°00'19.813"W	0.82	
2711.00	22.070	123.000	2632.53	318.73	-263.44	402.48	40°01'02.107"N	105°00'19.419"W	1.00	
2807.00	22.410	120.010	2721.39	341.97	-282.42	433.45	40°01'01.919"N	105°00'19.021"W	1.23	



Actual Wellpath Report

COYOTE TRAILS 34S-20-8C AWP

Page 3 of 10



REFERENCE WELLPATH IDENTIFICATION

Operator	EXTRACTION OIL & GAS	Slot	SLOT#09 COYOTE TRAILS 34S-20-8C (1147'FSL & 2175'FEL, SEC.28
Area	COLORADO	Well	COYOTE TRAILS 34S-20-8C
Field	WELD COUNTY (NAD83/TRUE NORTH)	Wellbore	COYOTE TRAILS 34S-20-8C AWB
Facility	SEC.28-T01N-R68W		

WELLPATH DATA (191 stations)

MD [ft]	Inclination [°]	Azimuth [°]	TVD [ft]	Vert Sect [ft]	North [ft]	East [ft]	Latitude	Longitude	DLS [°/100ft]	Comments
2902.00	20.510	119.440	2809.80	363.38	-299.66	463.63	40°01'01.749"N	105°00'18.633"W	2.01	
2998.00	21.250	118.620	2899.49	384.12	-316.26	493.55	40°01'01.585"N	105°00'18.249"W	0.83	
3093.00	20.220	117.850	2988.34	404.14	-332.18	523.17	40°01'01.427"N	105°00'17.868"W	1.12	
3188.00	21.060	118.900	3077.24	424.14	-348.09	552.63	40°01'01.270"N	105°00'17.489"W	0.97	
3284.00	23.670	122.530	3166.02	447.17	-366.80	583.99	40°01'01.085"N	105°00'17.086"W	3.07	
3380.00	22.210	122.840	3254.42	471.71	-387.00	615.48	40°01'00.885"N	105°00'16.681"W	1.53	
3475.00	23.360	123.590	3342.01	496.09	-407.16	646.26	40°01'00.686"N	105°00'16.286"W	1.25	
3570.00	21.520	123.680	3429.81	520.32	-427.24	676.45	40°01'00.488"N	105°00'15.898"W	1.94	
3665.00	21.180	123.640	3518.29	543.44	-446.41	705.24	40°01'00.298"N	105°00'15.528"W	0.36	
3762.00	21.840	127.730	3608.54	568.13	-467.16	734.10	40°01'00.093"N	105°00'15.157"W	1.69	
3857.00	22.030	124.870	3696.66	593.04	-488.16	762.69	40°00'59.886"N	105°00'14.789"W	1.14	
3953.00	23.290	120.830	3785.26	617.33	-508.18	793.76	40°00'59.688"N	105°00'14.390"W	2.09	
4048.00	23.120	118.770	3872.57	640.42	-526.79	826.24	40°00'59.504"N	105°00'13.973"W	0.87	
4144.00	21.960	118.740	3961.24	662.59	-544.49	858.50	40°00'59.329"N	105°00'13.558"W	1.21	
4240.00	22.400	121.310	4050.14	685.06	-562.63	889.87	40°00'59.150"N	105°00'13.155"W	1.11	
4335.00	21.900	125.640	4138.13	708.89	-582.36	919.73	40°00'58.955"N	105°00'12.771"W	1.80	
4430.00	19.220	124.990	4227.07	731.91	-601.65	946.95	40°00'58.764"N	105°00'12.421"W	2.83	
4526.00	20.830	124.800	4317.27	754.40	-620.45	973.91	40°00'58.578"N	105°00'12.075"W	1.68	
4621.00	23.130	124.610	4405.35	778.65	-640.69	1003.14	40°00'58.378"N	105°00'11.699"W	2.42	
4717.00	24.810	123.470	4493.07	804.90	-662.51	1035.46	40°00'58.163"N	105°00'11.284"W	1.82	
4812.00	23.360	122.680	4579.80	830.52	-683.68	1067.94	40°00'57.953"N	105°00'10.866"W	1.56	
4908.00	23.540	123.160	4667.87	855.69	-704.44	1100.01	40°00'57.748"N	105°00'10.454"W	0.27	
5003.00	22.480	127.940	4755.32	881.37	-725.99	1130.22	40°00'57.535"N	105°00'10.066"W	2.26	
5099.00	23.500	123.130	4843.70	907.29	-747.73	1160.73	40°00'57.320"N	105°00'09.674"W	2.23	
5195.00	25.250	122.990	4931.14	933.46	-769.34	1193.93	40°00'57.107"N	105°00'09.247"W	1.82	
5290.00	22.260	122.550	5018.08	958.60	-790.06	1226.10	40°00'56.902"N	105°00'08.833"W	3.15	
5385.00	23.630	124.410	5105.56	983.28	-810.50	1256.98	40°00'56.700"N	105°00'08.437"W	1.63	
5481.00	24.660	123.990	5193.16	1009.81	-832.57	1289.46	40°00'56.482"N	105°00'08.019"W	1.09	
5576.00	20.980	122.510	5280.71	1034.26	-852.80	1320.24	40°00'56.282"N	105°00'07.623"W	3.92	
5672.00	20.560	121.590	5370.48	1056.30	-870.87	1349.10	40°00'56.103"N	105°00'07.253"W	0.55	



Actual Wellpath Report

COYOTE TRAILS 34S-20-8C AWP

Page 4 of 10



REFERENCE WELLPATH IDENTIFICATION

Operator	EXTRACTION OIL & GAS	Slot	SLOT#09 COYOTE TRAILS 34S-20-8C (1147'FSL & 2175'FEL, SEC.28
Area	COLORADO	Well	COYOTE TRAILS 34S-20-8C
Field	WELD COUNTY (NAD83/TRUE NORTH)	Wellbore	COYOTE TRAILS 34S-20-8C AWB
Facility	SEC.28-T01N-R68W		

WELLPATH DATA (191 stations) † = interpolated/extrapolated station

MD [ft]	Inclination [°]	Azimuth [°]	TVD [ft]	Vert Sect [ft]	North [ft]	East [ft]	Latitude	Longitude	DLS [°/100ft]	Comments
5768.00	20.960	119.500	5460.24	1077.63	-888.15	1378.40	40°00'55.933"N	105°00'06.876"W	0.88	
5863.00	23.010	121.260	5548.33	1099.87	-906.16	1409.06	40°00'55.755"N	105°00'06.482"W	2.27	
5958.00	22.470	121.080	5635.95	1123.21	-925.16	1440.48	40°00'55.567"N	105°00'06.078"W	0.57	
6054.00	18.720	116.760	5725.80	1143.70	-941.58	1469.96	40°00'55.405"N	105°00'05.699"W	4.21	
6149.00	17.570	117.410	5816.08	1160.82	-955.04	1496.31	40°00'55.272"N	105°00'05.361"W	1.23	
6245.00	14.450	111.680	5908.35	1175.27	-966.14	1520.31	40°00'55.162"N	105°00'05.052"W	3.64	
6340.00	13.500	113.540	6000.53	1187.04	-974.95	1541.49	40°00'55.075"N	105°00'04.780"W	1.11	
6436.00	10.640	125.010	6094.42	1199.03	-984.51	1559.03	40°00'54.980"N	105°00'04.555"W	3.87	
6555.00	8.830	125.270	6211.70	1212.86	-996.09	1575.48	40°00'54.866"N	105°00'04.343"W	1.52	
6651.00	3.890	137.000	6307.08	1220.62	-1002.73	1583.72	40°00'54.800"N	105°00'04.237"W	5.29	
6746.00	2.580	131.590	6401.93	1224.90	-1006.51	1587.52	40°00'54.763"N	105°00'04.188"W	1.41	
6842.00	1.400	253.850	6497.89	1226.72	-1008.27	1588.01	40°00'54.745"N	105°00'04.182"W	3.68	
6937.00	1.690	278.510	6592.86	1226.47	-1008.38	1585.51	40°00'54.744"N	105°00'04.214"W	0.76	
7033.00	1.480	295.540	6688.82	1225.37	-1007.64	1582.99	40°00'54.752"N	105°00'04.247"W	0.53	
7128.00	0.130	278.240	6783.81	1224.66	-1007.10	1581.78	40°00'54.757"N	105°00'04.262"W	1.43	
7224.00	0.170	341.100	6879.81	1224.49	-1006.95	1581.62	40°00'54.759"N	105°00'04.264"W	0.17	
7320.00	0.760	3.430	6975.81	1223.72	-1006.18	1581.62	40°00'54.766"N	105°00'04.264"W	0.63	
7415.00	2.770	345.680	7070.76	1220.82	-1003.32	1581.09	40°00'54.794"N	105°00'04.271"W	2.17	
7511.00	4.110	160.030	7166.69	1221.89	-1004.31	1581.69	40°00'54.785"N	105°00'04.263"W	7.16	
7606.00	13.530	168.740	7260.47	1236.35	-1018.44	1585.03	40°00'54.645"N	105°00'04.220"W	9.99	
7702.00	19.930	175.270	7352.37	1263.93	-1045.79	1588.57	40°00'54.375"N	105°00'04.175"W	6.94	
7797.00	26.310	181.310	7439.70	1300.89	-1083.02	1589.43	40°00'54.007"N	105°00'04.164"W	7.16	
7893.00	32.290	181.590	7523.38	1347.17	-1129.96	1588.23	40°00'53.543"N	105°00'04.179"W	6.23	
7988.00	44.440	180.690	7597.73	1405.24	-1188.80	1587.12	40°00'52.961"N	105°00'04.194"W	12.80	
8084.00	54.040	181.060	7660.34	1476.94	-1261.42	1585.99	40°00'52.244"N	105°00'04.208"W	10.00	
8180.00	59.990	181.810	7712.58	1556.26	-1341.89	1583.96	40°00'51.449"N	105°00'04.234"W	6.23	
8275.00	71.720	180.580	7751.37	1641.62	-1428.41	1582.20	40°00'50.594"N	105°00'04.257"W	12.40	
8370.00	85.410	180.520	7770.16	1733.41	-1521.29	1581.31	40°00'49.676"N	105°00'04.269"W	14.41	
8441.00†	86.725	180.460	7775.03	1803.41	-1592.12	1580.70	40°00'48.976"N	105°00'04.277"W	1.85	CROSSED 460'SETBACK (460'FNL & 594'FEL, SEC.33)
8465.00	87.170	180.440	7776.31	1827.10	-1616.09	1580.51	40°00'48.739"N	105°00'04.279"W	1.85	



Actual Wellpath Report

COYOTE TRAILS 34S-20-8C AWP

Page 5 of 10



REFERENCE WELLPATH IDENTIFICATION			
Operator	EXTRACTION OIL & GAS	Slot	SLOT#09 COYOTE TRAILS 34S-20-8C (1147'FSL & 2175'FEL, SEC.28
Area	COLORADO	Well	COYOTE TRAILS 34S-20-8C
Field	WELD COUNTY (NAD83/TRUE NORTH)	Wellbore	COYOTE TRAILS 34S-20-8C AWB
Facility	SEC.28-T01N-R68W		

WELLPATH DATA (191 stations)										
MD [ft]	Inclination [°]	Azimuth [°]	TVD [ft]	Vert Sect [ft]	North [ft]	East [ft]	Latitude	Longitude	DLS [°/100ft]	Comments
8561.00	88.630	179.750	7779.82	1922.01	-1712.02	1580.36	40°00'47.791"N	105°00'04.281"W	1.68	
8656.00	89.370	178.710	7781.48	2016.18	-1806.99	1581.63	40°00'46.852"N	105°00'04.265"W	1.34	
8752.00	91.100	178.390	7781.09	2111.49	-1902.96	1584.06	40°00'45.904"N	105°00'04.234"W	1.83	
8847.00	90.940	179.790	7779.40	2205.68	-1997.93	1585.57	40°00'44.965"N	105°00'04.214"W	1.48	
8943.00	90.090	180.250	7778.53	2300.67	-2093.93	1585.54	40°00'44.017"N	105°00'04.215"W	1.01	
9038.00	90.280	180.190	7778.23	2394.62	-2188.92	1585.17	40°00'43.078"N	105°00'04.220"W	0.21	
9134.00	90.480	179.200	7777.59	2489.69	-2284.92	1585.68	40°00'42.129"N	105°00'04.213"W	1.05	
9229.00	89.440	178.940	7777.66	2583.90	-2379.91	1587.22	40°00'41.191"N	105°00'04.193"W	1.13	
9325.00	89.000	178.430	7778.96	2679.18	-2475.87	1589.43	40°00'40.242"N	105°00'04.165"W	0.70	
9420.00	88.790	178.340	7780.80	2773.52	-2570.82	1592.10	40°00'39.304"N	105°00'04.131"W	0.24	
9515.00	88.540	178.410	7783.01	2867.86	-2665.75	1594.80	40°00'38.366"N	105°00'04.096"W	0.27	
9611.00	88.500	178.650	7785.49	2963.14	-2761.69	1597.26	40°00'37.418"N	105°00'04.065"W	0.25	
9707.00	88.470	179.460	7788.03	3058.32	-2857.64	1598.84	40°00'36.469"N	105°00'04.044"W	0.84	
9802.00	90.260	178.280	7789.08	3152.57	-2952.61	1600.72	40°00'35.531"N	105°00'04.020"W	2.26	
9898.00	90.420	178.130	7788.51	3247.95	-3048.56	1603.72	40°00'34.583"N	105°00'03.982"W	0.23	
9993.00	90.600	177.890	7787.66	3342.37	-3143.50	1607.02	40°00'33.644"N	105°00'03.940"W	0.32	
10089.00	91.070	177.130	7786.27	3437.87	-3239.40	1611.19	40°00'32.697"N	105°00'03.886"W	0.93	
10184.00	91.080	178.410	7784.48	3532.32	-3334.31	1614.89	40°00'31.759"N	105°00'03.839"W	1.35	
10280.00	90.880	179.910	7782.84	3627.49	-3430.28	1616.29	40°00'30.810"N	105°00'03.821"W	1.58	
10375.00	90.900	179.500	7781.37	3721.56	-3525.27	1616.78	40°00'29.872"N	105°00'03.814"W	0.43	
10471.00	90.660	178.580	7780.06	3816.76	-3621.24	1618.39	40°00'28.923"N	105°00'03.794"W	0.99	
10566.00	91.610	178.280	7778.18	3911.09	-3716.19	1620.99	40°00'27.985"N	105°00'03.760"W	1.05	
10662.00	90.290	181.020	7776.59	4006.15	-3812.16	1621.58	40°00'27.037"N	105°00'03.753"W	3.17	
10757.00	90.390	181.830	7776.02	4099.78	-3907.13	1619.22	40°00'26.098"N	105°00'03.783"W	0.86	
10853.00	90.820	181.290	7775.01	4194.36	-4003.09	1616.60	40°00'25.150"N	105°00'03.817"W	0.72	
10948.00	89.750	182.610	7774.54	4287.84	-4098.03	1613.37	40°00'24.212"N	105°00'03.859"W	1.79	
11044.00	88.840	183.080	7775.72	4382.03	-4193.90	1608.61	40°00'23.264"N	105°00'03.920"W	1.07	
11139.00	89.310	182.790	7777.25	4475.20	-4288.77	1603.74	40°00'22.327"N	105°00'03.983"W	0.58	
11235.00	89.900	182.210	7777.91	4569.50	-4384.67	1599.56	40°00'21.379"N	105°00'04.037"W	0.86	
11330.00	89.900	182.210	7778.08	4662.91	-4479.60	1595.89	40°00'20.441"N	105°00'04.084"W	0.00	



Actual Wellpath Report

COYOTE TRAILS 34S-20-8C AWP

Page 6 of 10



REFERENCE WELLPATH IDENTIFICATION			
Operator	EXTRACTION OIL & GAS	Slot	SLOT#09 COYOTE TRAILS 34S-20-8C (1147'FSL & 2175'FEL, SEC.28
Area	COLORADO	Well	COYOTE TRAILS 34S-20-8C
Field	WELD COUNTY (NAD83/TRUE NORTH)	Wellbore	COYOTE TRAILS 34S-20-8C AWB
Facility	SEC.28-T01N-R68W		

WELLPATH DATA (191 stations)										
MD [ft]	Inclination [°]	Azimuth [°]	TVD [ft]	Vert Sect [ft]	North [ft]	East [ft]	Latitude	Longitude	DLS [°/100ft]	Comments
11426.00	89.250	181.350	7778.79	4757.42	-4575.55	1592.91	40°00'19.493"N	105°00'04.122"W	1.12	
11521.00	89.410	181.320	7779.90	4851.08	-4670.52	1590.70	40°00'18.554"N	105°00'04.151"W	0.17	
11617.00	89.760	180.790	7780.60	4945.80	-4766.50	1588.93	40°00'17.606"N	105°00'04.173"W	0.66	
11712.00	90.370	179.950	7780.49	5039.72	-4861.49	1588.32	40°00'16.667"N	105°00'04.181"W	1.09	
11808.00	90.780	179.510	7779.52	5134.77	-4957.49	1588.77	40°00'15.718"N	105°00'04.176"W	0.63	
11903.00	91.170	179.310	7777.91	5228.90	-5052.47	1589.75	40°00'14.779"N	105°00'04.163"W	0.46	
11998.00	88.840	178.770	7777.90	5323.12	-5147.45	1591.34	40°00'13.841"N	105°00'04.143"W	2.52	
12094.00	89.440	178.870	7779.34	5418.37	-5243.42	1593.32	40°00'12.892"N	105°00'04.117"W	0.63	
12189.00	90.290	178.450	7779.56	5512.67	-5338.39	1595.54	40°00'11.954"N	105°00'04.089"W	1.00	
12285.00	90.480	177.730	7778.92	5608.07	-5434.33	1598.74	40°00'11.006"N	105°00'04.048"W	0.78	
12380.00	91.020	177.330	7777.68	5702.57	-5529.24	1602.83	40°00'10.068"N	105°00'03.995"W	0.71	
12474.00	91.630	178.440	7775.50	5796.00	-5623.15	1606.30	40°00'09.140"N	105°00'03.951"W	1.35	
12570.00	90.150	180.300	7774.01	5891.13	-5719.12	1607.35	40°00'08.191"N	105°00'03.937"W	2.48	
12665.00	90.340	179.760	7773.60	5985.12	-5814.12	1607.30	40°00'07.253"N	105°00'03.938"W	0.60	
12761.00	88.850	180.200	7774.28	6080.12	-5910.11	1607.34	40°00'06.304"N	105°00'03.938"W	1.62	
12857.00	88.980	179.390	7776.10	6175.15	-6006.10	1607.68	40°00'05.355"N	105°00'03.933"W	0.85	
12951.00	89.260	178.810	7777.54	6268.36	-6100.07	1609.16	40°00'04.427"N	105°00'03.915"W	0.69	
13047.00	89.970	178.340	7778.19	6363.66	-6196.04	1611.54	40°00'03.478"N	105°00'03.884"W	0.89	
13142.00	89.570	178.970	7778.57	6457.97	-6291.01	1613.77	40°00'02.540"N	105°00'03.855"W	0.79	
13237.00	89.770	178.510	7779.12	6552.25	-6385.99	1615.86	40°00'01.601"N	105°00'03.829"W	0.53	
13332.00	90.410	179.950	7778.97	6646.43	-6480.98	1617.14	40°00'00.663"N	105°00'03.812"W	1.66	
13428.00	90.090	179.990	7778.55	6741.43	-6576.98	1617.19	39°59'59.714"N	105°00'03.812"W	0.34	
13523.00	90.100	179.340	7778.39	6835.52	-6671.97	1617.75	39°59'58.775"N	105°00'03.805"W	0.68	
13619.00	90.570	179.060	7777.83	6930.70	-6767.96	1619.09	39°59'57.826"N	105°00'03.788"W	0.57	
13714.00	88.440	181.950	7778.65	7024.56	-6862.94	1618.25	39°59'56.888"N	105°00'03.798"W	3.78	
13810.00	88.760	181.500	7781.00	7119.07	-6958.87	1615.36	39°59'55.940"N	105°00'03.836"W	0.58	
13905.00	89.300	181.590	7782.61	7212.66	-7053.82	1612.80	39°59'55.002"N	105°00'03.869"W	0.58	
14000.00	87.350	181.050	7785.38	7306.28	-7148.75	1610.61	39°59'54.063"N	105°00'03.897"W	2.13	
14096.00	87.290	180.610	7789.87	7400.96	-7244.63	1609.22	39°59'53.116"N	105°00'03.915"W	0.46	
14192.00	87.330	180.310	7794.38	7495.74	-7340.52	1608.45	39°59'52.168"N	105°00'03.925"W	0.31	



Actual Wellpath Report

COYOTE TRAILS 34S-20-8C AWP

Page 7 of 10



REFERENCE WELLPATH IDENTIFICATION

Operator	EXTRACTION OIL & GAS	Slot	SLOT#09 COYOTE TRAILS 34S-20-8C (1147'FSL & 2175'FEL, SEC.28
Area	COLORADO	Well	COYOTE TRAILS 34S-20-8C
Field	WELD COUNTY (NAD83/TRUE NORTH)	Wellbore	COYOTE TRAILS 34S-20-8C AWB
Facility	SEC.28-T01N-R68W		

WELLPATH DATA (191 stations)

MD [ft]	Inclination [°]	Azimuth [°]	TVD [ft]	Vert Sect [ft]	North [ft]	East [ft]	Latitude	Longitude	DLS [°/100ft]	Comments
14287.00	87.280	179.370	7798.84	7589.68	-7435.42	1608.72	39°59'51.230"N	105°00'03.921"W	0.99	
14383.00	87.280	179.360	7803.40	7684.72	-7531.30	1609.78	39°59'50.283"N	105°00'03.908"W	0.01	
14478.00	88.230	177.560	7807.12	7778.98	-7626.19	1612.33	39°59'49.345"N	105°00'03.875"W	2.14	
14573.00	88.470	176.680	7809.86	7873.52	-7721.03	1617.10	39°59'48.408"N	105°00'03.814"W	0.96	
14668.00	90.240	178.200	7810.93	7968.03	-7815.92	1621.35	39°59'47.470"N	105°00'03.759"W	2.46	
14764.00	90.380	178.160	7810.41	8063.42	-7911.87	1624.39	39°59'46.522"N	105°00'03.720"W	0.15	
14859.00	90.380	178.160	7809.78	8157.81	-8006.82	1627.45	39°59'45.584"N	105°00'03.681"W	0.00	
14955.00	89.470	176.630	7809.90	8253.34	-8102.72	1631.81	39°59'44.636"N	105°00'03.625"W	1.85	
15050.00	90.310	180.380	7810.09	8347.65	-8197.67	1634.29	39°59'43.698"N	105°00'03.593"W	4.05	
15146.00	88.840	182.210	7810.80	8442.30	-8293.63	1632.12	39°59'42.749"N	105°00'03.621"W	2.45	
15241.00	88.820	181.610	7812.74	8535.78	-8388.56	1628.95	39°59'41.811"N	105°00'03.662"W	0.63	
15336.00	89.100	181.070	7814.46	8629.43	-8483.52	1626.73	39°59'40.873"N	105°00'03.691"W	0.64	
15432.00	88.810	180.180	7816.21	8724.25	-8579.50	1625.68	39°59'39.924"N	105°00'03.704"W	0.97	
15528.00	88.360	179.190	7818.58	8819.29	-8675.46	1626.21	39°59'38.976"N	105°00'03.698"W	1.13	
15623.00	90.830	179.510	7819.25	8913.44	-8770.45	1627.29	39°59'38.037"N	105°00'03.684"W	2.62	
15718.00	90.750	178.570	7817.94	9007.65	-8865.42	1628.88	39°59'37.099"N	105°00'03.663"W	0.99	
15814.00	90.730	177.090	7816.70	9103.09	-8961.34	1632.51	39°59'36.151"N	105°00'03.617"W	1.54	
15909.00	90.470	178.320	7815.71	9197.57	-9056.26	1636.32	39°59'35.213"N	105°00'03.568"W	1.32	
16005.00	91.440	182.240	7814.11	9292.46	-9152.23	1635.85	39°59'34.264"N	105°00'03.574"W	4.21	
16100.00	90.620	183.080	7812.40	9385.72	-9247.11	1631.44	39°59'33.327"N	105°00'03.631"W	1.24	
16195.00	89.710	183.450	7812.13	9478.79	-9341.95	1626.03	39°59'32.389"N	105°00'03.700"W	1.03	
16291.00	89.570	182.930	7812.73	9572.86	-9437.80	1620.69	39°59'31.442"N	105°00'03.769"W	0.56	
16386.00	87.990	183.570	7814.75	9665.92	-9532.62	1615.30	39°59'30.505"N	105°00'03.838"W	1.79	
16482.00	88.340	183.180	7817.83	9759.89	-9628.41	1609.66	39°59'29.559"N	105°00'03.911"W	0.55	
16577.00	88.340	183.170	7820.58	9852.95	-9723.22	1604.40	39°59'28.622"N	105°00'03.979"W	0.01	
16672.00	87.950	182.380	7823.65	9946.14	-9818.06	1599.80	39°59'27.684"N	105°00'04.038"W	0.93	
16768.00	90.020	180.690	7825.36	10040.71	-9914.00	1597.23	39°59'26.736"N	105°00'04.071"W	2.78	
16863.00	90.020	179.710	7825.32	10134.66	-10009.00	1596.90	39°59'25.798"N	105°00'04.075"W	1.03	
16958.00	90.420	179.500	7824.96	10228.76	-10104.00	1597.55	39°59'24.859"N	105°00'04.067"W	0.48	
17054.00	90.940	178.790	7823.82	10323.95	-10199.98	1598.98	39°59'23.910"N	105°00'04.049"W	0.92	



Actual Wellpath Report

COYOTE TRAILS 34S-20-8C AWP

Page 8 of 10



REFERENCE WELLPATH IDENTIFICATION

Operator	EXTRACTION OIL & GAS	Slot	SLOT#09 COYOTE TRAILS 34S-20-8C (1147'FSL & 2175'FEL, SEC.28
Area	COLORADO	Well	COYOTE TRAILS 34S-20-8C
Field	WELD COUNTY (NAD83/TRUE NORTH)	Wellbore	COYOTE TRAILS 34S-20-8C AWB
Facility	SEC.28-T01N-R68W		

WELLPATH DATA (191 stations)

MD [ft]	Inclination [°]	Azimuth [°]	TVD [ft]	Vert Sect [ft]	North [ft]	East [ft]	Latitude	Longitude	DLS °/100ft	Comments
17149.00	90.670	178.910	7822.48	10418.20	-10294.95	1600.89	39°59'22.972"N	105°00'04.024"W	0.31	
17245.00	89.120	178.990	7822.66	10513.43	-10390.93	1602.65	39°59'22.023"N	105°00'04.002"W	1.62	
17340.00	89.480	178.420	7823.82	10607.72	-10485.90	1604.80	39°59'21.085"N	105°00'03.974"W	0.71	
17436.00	90.060	177.710	7824.21	10703.13	-10581.84	1608.04	39°59'20.136"N	105°00'03.933"W	0.95	
17531.00	88.590	177.510	7825.32	10797.61	-10676.75	1612.00	39°59'19.199"N	105°00'03.882"W	1.56	
17627.00	88.690	177.210	7827.60	10893.12	-10772.62	1616.42	39°59'18.251"N	105°00'03.825"W	0.33	
17722.00	89.000	176.680	7829.52	10987.70	-10867.47	1621.48	39°59'17.314"N	105°00'03.760"W	0.65	
17817.00	89.350	176.040	7830.89	11082.38	-10962.26	1627.51	39°59'16.377"N	105°00'03.683"W	0.77	
17913.00	89.950	175.990	7831.47	11178.11	-11058.03	1634.18	39°59'15.431"N	105°00'03.597"W	0.63	
18008.00	90.530	175.440	7831.07	11272.87	-11152.76	1641.28	39°59'14.494"N	105°00'03.506"W	0.84	BAKER DRILLED USING THIRD PARTY MWD-LAST SURVEY (249'FSL & 1051'FEL, SEC.04)
18076.00	90.530	175.440	7830.45	11340.73	-11220.54	1646.69	39°59'13.825"N	105°00'03.437"W	0.00	PROJECTION TO BIT (181'FSL & 1045'FEL, SEC.04)

TARGETS

Name	TVD [ft]	North [ft]	East [ft]	Grid East [US ft]	Grid North [US ft]	Latitude	Longitude	Shape
SEC.03-T01S-R68W	-4.00	-0.71	144.01	3138269.92	1249778.85	40°01'04.703"N	105°00'22.741"W	polygon
SEC.04-T01S-R68W	-4.00	-0.71	144.01	3138269.92	1249778.85	40°01'04.703"N	105°00'22.741"W	polygon
SEC.27-T01N-R68W	-4.00	-0.71	144.01	3138269.92	1249778.85	40°01'04.703"N	105°00'22.741"W	point
SEC.28-T01N-R68W	-4.00	-0.71	144.01	3138269.92	1249778.85	40°01'04.703"N	105°00'22.741"W	polygon
SEC.33-T01N-R68W	-4.00	-0.71	144.01	3138269.92	1249778.85	40°01'04.703"N	105°00'22.741"W	polygon
SEC.34-T01N-R68W	-4.00	-0.71	144.01	3138269.92	1249778.85	40°01'04.703"N	105°00'22.741"W	polygon
COYOTE TRAILS 34S-20-8C LP REV-2 (460'FNL & 596'FEL, SEC.33)	7775.00	-1589.66	1581.83	3139716.50	1248197.97	40°00'49.000"N	105°00'04.262"W	point
COYOTE TRAILS 34S-20-8C BHL REV-2 (150'FSL & 1052'FEL, SEC.04)	7784.00	-11251.67	1639.58	3139827.98	1238536.79	39°59'13.517"N	105°00'03.528"W	point
COYOTE TRAILS 34S-20-8C BHL REV-1 (150'FSL & 1052'FEL, SEC.04)	7810.00	-11251.67	1639.58	3139827.98	1238536.79	39°59'13.517"N	105°00'03.528"W	point
COYOTE TRAILS 34S-20-8C LP REV-1 (460'FNL & 596'FEL, SEC.33)	7810.00	-1589.66	1581.83	3139716.50	1248197.97	40°00'49.000"N	105°00'04.262"W	point

TARGETS								
Name	TVD [ft]	North [ft]	East [ft]	Grid East [US ft]	Grid North [US ft]	Latitude	Longitude	Shape
SEC.03-T01S-R68W (150'FSL SETBACKS)	7896.00	-0.71	144.01	3138269.92	1249778.85	40°01'04.703"N	105°00'22.741"W	polygon
SEC.04-T01S-R68W (150'FSL SETBACKS)	7896.00	0.00	17.97	3138143.88	1249778.86	40°01'04.710"N	105°00'24.361"W	polygon

TARGETS								
Name	TVD [ft]	North [ft]	East [ft]	Grid East [US ft]	Grid North [US ft]	Latitude	Longitude	Shape
SEC.33-T01N-R68W (460'FNL SETBACKS)	7896.00	-0.71	144.01	3138269.92	1249778.85	40°01'04.703"N	105°00'22.741"W	polygon
SEC.34-T01N-R68W (460'FNL SETBACKS)	7896.00	-0.71	144.01	3138269.92	1249778.85	40°01'04.703"N	105°00'22.741"W	polygon
COYOTE TRAILS 34S-20-8C BHL (150'FSL & 1052'FEL, SEC.04)	8068.00	-11251.69	1639.58	3139827.98	1238536.77	39°59'13.517"N	105°00'03.528"W	point
COYOTE TRAILS 34S-20-8C LP (460'FNL & 596'FEL, SEC.33)	8068.00	-1589.70	1581.80	3139716.47	1248197.93	40°00'49.000"N	105°00'04.262"W	point



Actual Wellpath Report

COYOTE TRAILS 34S-20-8C AWP

Page 9 of 10



REFERENCE WELLPATH IDENTIFICATION			
Operator	EXTRACTION OIL & GAS	Slot	SLOT#09 COYOTE TRAILS 34S-20-8C (1147'FSL & 2175'FEL, SEC.28
Area	COLORADO	Well	COYOTE TRAILS 34S-20-8C
Field	WELD COUNTY (NAD83/TRUE NORTH)	Wellbore	COYOTE TRAILS 34S-20-8C AWB
Facility	SEC.28-T01N-R68W		

WELLPATH COMPOSITION - Ref Wellbore: COYOTE TRAILS 34S-20-8C AWB Ref Wellpath: COYOTE TRAILS 34S-20-8C AWP				
Start MD [ft]	End MD [ft]	Positional Uncertainty Model	Log Name/Comment	Wellbore
29.00	1545.00	ISCWSA MWD, Rev. 4 (Standard)	BAKER DRILLED USING THIRD PARTY MWD <214-1545>	COYOTE TRAILS 34S-20-8C AWB
1545.00	18008.00	ISCWSA MWD, Rev. 4 (Standard)	BAKER DRILLED USING THIRD PARTY MWD <1661-18008>	COYOTE TRAILS 34S-20-8C AWB
18008.00	18076.00	Blind Drilling (std)	Projection to bit	COYOTE TRAILS 34S-20-8C AWB



Actual Wellpath Report

COYOTE TRAILS 34S-20-8C AWP

Page 10 of 10



REFERENCE WELLPATH IDENTIFICATION			
Operator	EXTRACTION OIL & GAS	Slot	SLOT#09 COYOTE TRAILS 34S-20-8C (1147'FSL & 2175'FEL, SEC.28
Area	COLORADO	Well	COYOTE TRAILS 34S-20-8C
Field	WELD COUNTY (NAD83/TRUE NORTH)	Wellbore	COYOTE TRAILS 34S-20-8C AWB
Facility	SEC.28-T01N-R68W		

WELLPATH COMMENTS				
MD [ft]	Inclination [°]	Azimuth [°]	TVD [ft]	Comment
214.00	0.620	20.650	214.00	BAKER DRILLED USING THIRD PARTY MWD-FIRST SURVEY
8441.00	86.725	180.460	7775.03	CROSSED 460'SETBACK (460'FNL & 594'FEL, SEC.33)
18008.00	90.530	175.440	7831.07	BAKER DRILLED USING THIRD PARTY MWD-LAST SURVEY (249'FSL & 1051'FEL,SEC.04)
18076.00	90.530	175.440	7830.45	PROJECTION TO BIT (181'FSL & 1045'FEL, SEC.04)