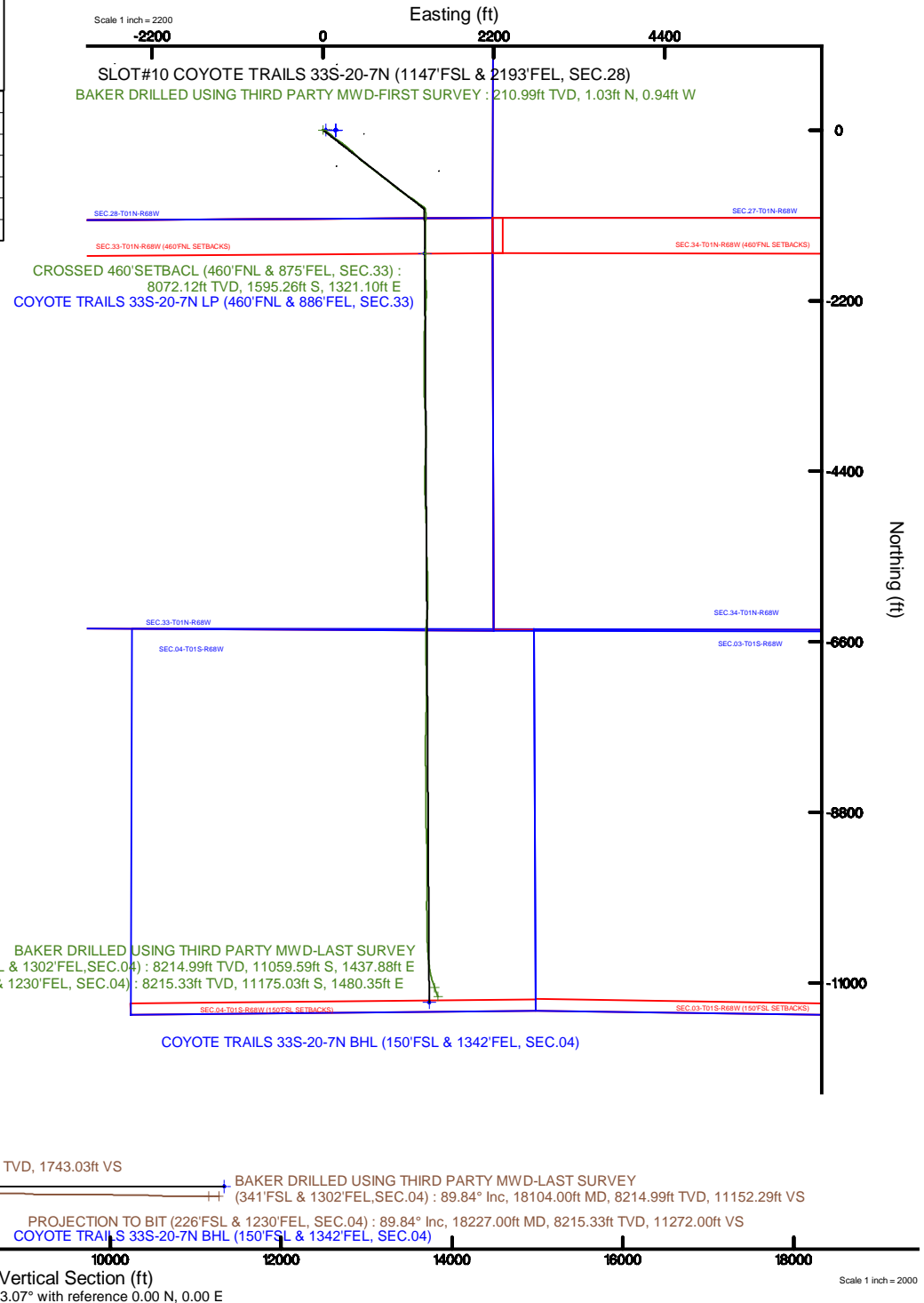
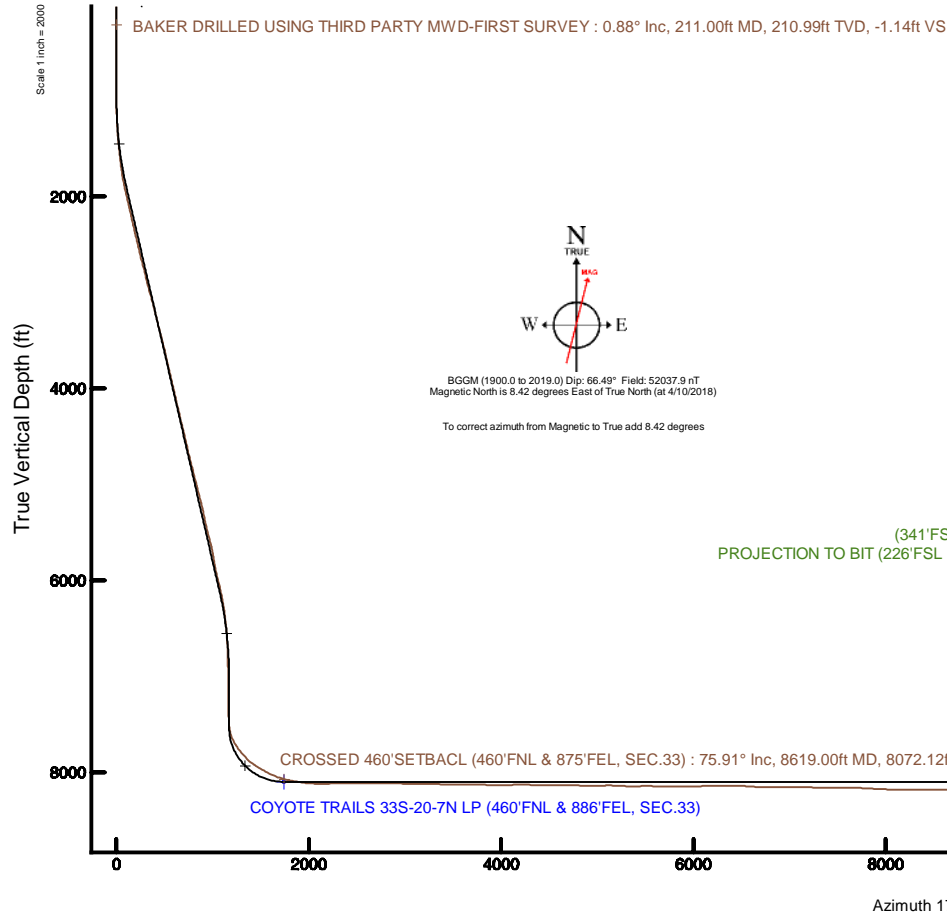


EXTRACTION OIL & GAS

Location: COLORADO Slot: SLOT#10 COYOTE TRAILS 33S-20-7N (1147'FSL & 2193'FEL, SEC.28)
Field: WELD COUNTY (NAD83/TRUE NORTH) Well: COYOTE TRAILS 33S-20-7N
Facility: SEC.28-T01N-R68W Wellbore: COYOTE TRAILS 33S-20-7N PWB

Plot reference wellpath is COYOTE TRAILS 33S-20-7N PWP (REV-A.0)	Grid System: NAD83 / Lambert Colorado SP, Northern Zone (501), US feet
True vertical depths are referenced to PATTERSON 901 (29KB) (RKB)	* = Wellpath was transformed from a different geodetic datum
Measured depths are referenced to PATTERSON 901 (29KB) (RKB)	North Reference: True north
PATTERSON 901 (29KB) (RKB) to Mean Sea Level: 5299 feet	Scale: True distance
Mean Sea Level to Mud line (At Slot: SLOT#10 COYOTE TRAILS 33S-20-7N (1147'FSL & 2193'FEL, SEC.28)): 0 feet	Depths are in feet
Coordinates are in feet referenced to Slot	Created by: ingnjamr on 2018-04-25
	Database: Denver





Actual Wellpath Report

COYOTE TRAILS 33S-20-7N AWP

Page 1 of 11



REFERENCE WELLPATH IDENTIFICATION

Operator	EXTRACTION OIL & GAS	Slot	SLOT#10 COYOTE TRAILS 33S-20-7N (1147'FSL & 2193'FEL, SEC.28)
Area	COLORADO	Well	COYOTE TRAILS 33S-20-7N
Field	WELD COUNTY (NAD83/TRUE NORTH)	Wellbore	COYOTE TRAILS 33S-20-7N AWB
Facility	SEC.28-T01N-R68W		

REPORT SETUP INFORMATION

Projection System	NAD83 / Lambert Colorado SP, Northern Zone (501), US feet	Software System	WellArchitect® 5.0
North Reference	True	User	Ingmjmr
Scale	0.999965	Report Generated	4/25/2018 at 1:39:27 PM
Convergence at slot	0.32° East	Database/Source file	Denver/COYOTE_TRAILS_33S-20-7N_AWP.xml

WELLPATH LOCATION

	Local coordinates		Grid coordinates		Geographic coordinates	
	North[ft]	East[ft]	Easting[US ft]	Northing[US ft]	Latitude	Longitude
Slot Location	0.71	-162.22	3138107.70	1249778.66	40°01'04.710"N	105°00'24.826"W
Facility Reference Pt			3138269.92	1249778.85	40°01'04.703"N	105°00'22.741"W
Field Reference Pt			3185481.27	1419166.81	40°28'55.560"N	104°49'59.556"W

WELLPATH DATUM

Calculation method	Minimum curvature	PATTERSON 901 (29'KB) (RKB) to Facility Vertical Datum	5299.00ft
Horizontal Reference Pt	Slot	PATTERSON 901 (29'KB) (RKB) to Mean Sea Level	5299.00ft
Vertical Reference Pt	PATTERSON 901 (29'KB) (RKB)	PATTERSON 901 (29'KB) (RKB) to Mud Line at Slot (SLOT#10 COYOTE TRAILS 33S-20-7N (1147'FSL & 2193'FEL, SEC.28))	5299.00ft
MD Reference Pt	PATTERSON 901 (29'KB) (RKB)	Section Origin	N 0.00, E 0.00 ft
Field Vertical Reference	Mean Sea Level	Section Azimuth	173.07°



Actual Wellpath Report

COYOTE TRAILS 33S-20-7N AWP

Page 2 of 11



REFERENCE WELLPATH IDENTIFICATION

Operator	EXTRACTION OIL & GAS	Slot	SLOT#10 COYOTE TRAILS 33S-20-7N (1147'FSL & 2193'FEL, SEC.28)
Area	COLORADO	Well	COYOTE TRAILS 33S-20-7N
Field	WELD COUNTY (NAD83/TRUE NORTH)	Wellbore	COYOTE TRAILS 33S-20-7N AWP
Facility	SEC.28-T01N-R68W		

WELLPATH DATA (192 stations) † = interpolated/extrapolated station

MD [ft]	Inclination [°]	Azimuth [°]	TVD [ft]	Vert Sect [ft]	North [ft]	East [ft]	Latitude	Longitude	DLS [°/100ft]	Comments
0.00†	0.000	317.750	0.00	0.00	0.00	0.00	40°01'04.710"N	105°00'24.826"W	0.00	
29.00	0.000	317.750	29.00	0.00	0.00	0.00	40°01'04.710"N	105°00'24.826"W	0.00	
211.00	0.880	317.750	210.99	-1.14	1.03	-0.94	40°01'04.720"N	105°00'24.838"W	0.48	BAKER DRILLED USING THIRD PARTY MWD-FIRST SURVEY
306.00	0.880	316.740	305.98	-2.32	2.11	-1.93	40°01'04.731"N	105°00'24.851"W	0.02	
401.00	0.620	316.560	400.97	-3.32	3.01	-2.78	40°01'04.740"N	105°00'24.862"W	0.27	
496.00	0.710	301.930	495.97	-4.11	3.69	-3.64	40°01'04.747"N	105°00'24.873"W	0.20	
592.00	0.880	318.320	591.96	-5.09	4.56	-4.63	40°01'04.755"N	105°00'24.886"W	0.29	
687.00	0.490	82.740	686.95	-5.69	5.16	-4.71	40°01'04.761"N	105°00'24.887"W	1.29	
782.00	0.800	101.820	781.95	-5.48	5.07	-3.66	40°01'04.760"N	105°00'24.873"W	0.39	
878.00	0.620	107.240	877.94	-5.05	4.78	-2.51	40°01'04.757"N	105°00'24.858"W	0.20	
973.00	2.300	127.330	972.91	-3.51	3.47	-0.50	40°01'04.744"N	105°00'24.832"W	1.82	
1069.00	2.210	124.820	1068.83	-0.93	1.25	2.55	40°01'04.722"N	105°00'24.793"W	0.14	
1164.00	4.290	116.230	1163.68	2.23	-1.37	7.24	40°01'04.696"N	105°00'24.733"W	2.24	
1259.00	5.920	117.840	1258.30	6.97	-5.23	14.76	40°01'04.658"N	105°00'24.636"W	1.72	
1355.00	6.890	115.520	1353.69	12.88	-10.02	24.33	40°01'04.611"N	105°00'24.513"W	1.05	
1450.00	8.400	123.150	1447.85	20.41	-16.27	35.29	40°01'04.549"N	105°00'24.372"W	1.91	
1545.00	10.120	123.060	1541.61	30.24	-24.62	48.09	40°01'04.467"N	105°00'24.208"W	1.81	
1661.00	10.190	122.710	1655.79	43.34	-35.72	65.27	40°01'04.357"N	105°00'23.987"W	0.08	
1756.00	12.160	126.300	1748.99	55.55	-46.19	80.40	40°01'04.254"N	105°00'23.793"W	2.20	
1851.00	14.250	131.810	1841.47	71.20	-59.91	97.19	40°01'04.118"N	105°00'23.577"W	2.57	
1947.00	16.180	133.220	1934.10	90.35	-76.95	115.74	40°01'03.950"N	105°00'23.338"W	2.05	
2042.00	17.890	128.380	2024.94	110.89	-95.07	136.83	40°01'03.770"N	105°00'23.067"W	2.34	
2138.00	19.460	125.350	2115.88	132.13	-113.48	161.43	40°01'03.589"N	105°00'22.751"W	1.92	
2233.00	18.450	123.350	2205.73	152.50	-130.90	186.90	40°01'03.416"N	105°00'22.424"W	1.26	
2329.00	20.010	125.290	2296.37	173.36	-148.74	212.99	40°01'03.240"N	105°00'22.088"W	1.76	
2424.00	18.300	123.210	2386.11	193.90	-166.30	238.74	40°01'03.067"N	105°00'21.757"W	1.94	
2519.00	19.220	130.790	2476.08	215.09	-184.69	263.06	40°01'02.885"N	105°00'21.445"W	2.74	
2615.00	17.550	128.740	2567.17	237.14	-204.07	286.32	40°01'02.693"N	105°00'21.146"W	1.87	
2710.00	20.120	127.860	2657.08	258.90	-223.07	310.39	40°01'02.506"N	105°00'20.837"W	2.72	
2806.00	19.400	132.340	2747.43	282.61	-243.94	335.22	40°01'02.299"N	105°00'20.517"W	1.75	



Actual Wellpath Report

COYOTE TRAILS 33S-20-7N AWP

Page 3 of 11



REFERENCE WELLPATH IDENTIFICATION

Operator	EXTRACTION OIL & GAS	Slot	SLOT#10 COYOTE TRAILS 33S-20-7N (1147'FSL & 2193'FEL, SEC.28)
Area	COLORADO	Well	COYOTE TRAILS 33S-20-7N
Field	WELD COUNTY (NAD83/TRUE NORTH)	Wellbore	COYOTE TRAILS 33S-20-7N AWB
Facility	SEC.28-T01N-R68W		

WELLPATH DATA (192 stations)

MD [ft]	Inclination [°]	Azimuth [°]	TVD [ft]	Vert Sect [ft]	North [ft]	East [ft]	Latitude	Longitude	DLS [°/100ft]	Comments
2901.00	17.260	129.360	2837.61	304.76	-263.51	357.78	40°01'02.106"N	105°00'20.228"W	2.46	
2997.00	18.600	133.140	2928.95	326.80	-283.01	379.96	40°01'01.913"N	105°00'19.942"W	1.85	
3092.00	21.030	133.220	3018.32	351.51	-305.05	403.44	40°01'01.695"N	105°00'19.641"W	2.56	
3188.00	19.180	132.800	3108.46	376.77	-327.56	427.57	40°01'01.473"N	105°00'19.331"W	1.93	
3283.00	17.340	131.730	3198.67	399.30	-347.59	449.59	40°01'01.275"N	105°00'19.048"W	1.97	
3379.00	17.130	135.470	3290.37	421.25	-367.19	470.18	40°01'01.081"N	105°00'18.783"W	1.17	
3475.00	20.430	130.510	3381.25	444.80	-388.16	492.84	40°01'00.874"N	105°00'18.492"W	3.82	
3569.00	18.430	129.240	3469.89	467.60	-408.22	516.82	40°01'00.676"N	105°00'18.183"W	2.17	
3665.00	19.490	129.370	3560.68	490.13	-427.98	540.96	40°01'00.481"N	105°00'17.873"W	1.11	
3761.00	17.160	128.210	3651.81	511.75	-446.90	564.47	40°01'00.294"N	105°00'17.571"W	2.46	
3856.00	17.980	123.930	3742.38	531.28	-463.75	587.65	40°01'00.127"N	105°00'17.273"W	1.61	
3952.00	19.710	127.360	3833.23	552.28	-481.85	612.81	40°00'59.948"N	105°00'16.950"W	2.14	
4048.00	17.540	126.930	3924.20	573.61	-500.36	637.25	40°00'59.765"N	105°00'16.636"W	2.26	
4143.00	19.250	127.860	4014.34	594.56	-518.58	661.06	40°00'59.585"N	105°00'16.330"W	1.83	
4239.00	16.930	128.470	4105.59	615.67	-536.99	684.50	40°00'59.403"N	105°00'16.028"W	2.42	
4334.00	18.780	129.010	4196.01	636.51	-555.22	707.21	40°00'59.223"N	105°00'15.736"W	1.96	
4430.00	17.260	128.880	4287.30	657.83	-573.89	730.31	40°00'59.039"N	105°00'15.440"W	1.58	
4525.00	19.790	128.530	4377.37	679.40	-592.76	753.86	40°00'58.852"N	105°00'15.137"W	2.67	
4621.00	17.480	128.720	4468.33	701.30	-611.90	777.83	40°00'58.663"N	105°00'14.829"W	2.41	
4716.00	19.610	125.420	4558.39	722.24	-630.07	801.95	40°00'58.483"N	105°00'14.519"W	2.50	
4812.00	18.070	124.020	4649.25	742.85	-647.73	827.42	40°00'58.309"N	105°00'14.191"W	1.67	
4907.00	19.740	130.310	4739.13	764.29	-666.36	851.87	40°00'58.125"N	105°00'13.877"W	2.77	
5003.00	17.500	133.420	4830.10	787.32	-686.77	874.72	40°00'57.923"N	105°00'13.583"W	2.55	
5098.00	20.270	129.030	4919.98	810.15	-706.96	897.89	40°00'57.723"N	105°00'13.286"W	3.28	
5194.00	18.690	128.780	5010.49	833.11	-727.06	922.80	40°00'57.525"N	105°00'12.966"W	1.65	
5289.00	20.810	128.440	5099.89	856.02	-747.09	947.89	40°00'57.327"N	105°00'12.643"W	2.23	
5385.00	19.560	127.690	5190.00	879.45	-767.52	973.96	40°00'57.125"N	105°00'12.308"W	1.33	
5480.00	16.480	126.370	5280.32	899.86	-785.24	997.40	40°00'56.950"N	105°00'12.007"W	3.27	
5576.00	18.020	122.250	5372.01	918.59	-801.24	1020.92	40°00'56.792"N	105°00'11.704"W	2.05	
5671.00	18.920	127.630	5462.12	938.68	-818.48	1045.55	40°00'56.621"N	105°00'11.388"W	2.03	



Actual Wellpath Report

COYOTE TRAILS 33S-20-7N AWP

Page 4 of 11



REFERENCE WELLPATH IDENTIFICATION

Operator	EXTRACTION OIL & GAS	Slot	SLOT#10 COYOTE TRAILS 33S-20-7N (1147'FSL & 2193'FEL, SEC.28)
Area	COLORADO	Well	COYOTE TRAILS 33S-20-7N
Field	WELD COUNTY (NAD83/TRUE NORTH)	Wellbore	COYOTE TRAILS 33S-20-7N AWB
Facility	SEC.28-T01N-R68W		

WELLPATH DATA (192 stations)

MD [ft]	Inclination [°]	Azimuth [°]	TVD [ft]	Vert Sect [ft]	North [ft]	East [ft]	Latitude	Longitude	DLS [°/100ft]	Comments
5767.00	22.420	125.640	5551.93	961.99	-838.66	1072.76	40°00'56.422"N	105°00'11.038"W	3.72	
5862.00	20.230	123.400	5640.42	984.88	-858.26	1101.20	40°00'56.228"N	105°00'10.673"W	2.46	
5981.00	16.100	114.740	5753.48	1006.87	-876.50	1133.39	40°00'56.048"N	105°00'10.259"W	4.14	
6077.00	16.820	122.120	5845.56	1022.62	-889.46	1157.24	40°00'55.920"N	105°00'09.952"W	2.30	
6172.00	16.720	130.290	5936.53	1041.31	-905.61	1179.31	40°00'55.760"N	105°00'09.669"W	2.48	
6268.00	18.820	131.630	6027.95	1063.05	-924.83	1201.42	40°00'55.570"N	105°00'09.385"W	2.23	
6363.00	16.770	129.500	6118.40	1084.47	-943.73	1223.45	40°00'55.384"N	105°00'09.102"W	2.26	
6459.00	15.690	123.270	6210.58	1102.89	-959.66	1244.99	40°00'55.226"N	105°00'08.825"W	2.13	
6555.00	12.560	125.430	6303.66	1118.31	-972.83	1264.36	40°00'55.096"N	105°00'08.576"W	3.31	
6650.00	9.490	121.260	6396.90	1130.11	-982.89	1279.47	40°00'54.996"N	105°00'08.382"W	3.34	
6746.00	8.060	134.020	6491.78	1140.23	-991.67	1291.08	40°00'54.910"N	105°00'08.232"W	2.51	
6841.00	4.670	132.740	6586.19	1148.36	-998.93	1298.71	40°00'54.838"N	105°00'08.134"W	3.57	
6937.00	4.320	129.720	6681.89	1153.96	-1003.89	1304.36	40°00'54.789"N	105°00'08.062"W	0.44	
7032.00	1.000	148.280	6776.78	1157.32	-1006.88	1307.55	40°00'54.759"N	105°00'08.021"W	3.57	
7127.00	1.000	129.590	6871.76	1158.67	-1008.12	1308.62	40°00'54.747"N	105°00'08.007"W	0.34	
7223.00	1.100	130.640	6967.75	1159.96	-1009.25	1309.97	40°00'54.736"N	105°00'07.990"W	0.11	
7319.00	1.240	125.590	7063.72	1161.34	-1010.45	1311.51	40°00'54.724"N	105°00'07.970"W	0.18	
7414.00	1.260	114.630	7158.70	1162.59	-1011.49	1313.30	40°00'54.714"N	105°00'07.947"W	0.25	
7510.00	1.650	108.650	7254.67	1163.73	-1012.37	1315.57	40°00'54.705"N	105°00'07.918"W	0.44	
7605.00	1.610	107.380	7349.63	1164.87	-1013.21	1318.14	40°00'54.697"N	105°00'07.885"W	0.06	
7701.00	1.170	139.030	7445.61	1166.24	-1014.35	1320.07	40°00'54.686"N	105°00'07.860"W	0.90	
7796.00	8.950	178.480	7540.17	1174.42	-1022.48	1320.90	40°00'54.605"N	105°00'07.849"W	8.51	
7892.00	20.210	178.340	7632.93	1198.44	-1046.60	1321.58	40°00'54.367"N	105°00'07.840"W	11.73	
7987.00	33.010	178.070	7717.69	1240.73	-1089.04	1322.93	40°00'53.947"N	105°00'07.823"W	13.47	
8083.00	40.100	181.700	7794.77	1297.43	-1146.16	1322.90	40°00'53.383"N	105°00'07.824"W	7.72	
8179.00	45.420	180.710	7865.23	1361.93	-1211.30	1321.55	40°00'52.739"N	105°00'07.841"W	5.59	
8274.00	56.750	182.240	7924.81	1434.92	-1285.07	1319.58	40°00'52.010"N	105°00'07.866"W	11.99	
8369.00	60.780	181.750	7974.06	1515.15	-1366.23	1316.76	40°00'51.208"N	105°00'07.903"W	4.26	
8465.00	63.810	178.140	8018.70	1599.51	-1451.19	1316.88	40°00'50.369"N	105°00'07.901"W	4.59	
8560.00	70.880	178.000	8055.27	1686.79	-1538.76	1319.83	40°00'49.503"N	105°00'07.863"W	7.44	



Actual Wellpath Report

COYOTE TRAILS 33S-20-7N AWP

Page 5 of 11



REFERENCE WELLPATH IDENTIFICATION

Operator	EXTRACTION OIL & GAS	Slot	SLOT#10 COYOTE TRAILS 33S-20-7N (1147'FSL & 2193'FEL, SEC.28)
Area	COLORADO	Well	COYOTE TRAILS 33S-20-7N
Field	WELD COUNTY (NAD83/TRUE NORTH)	Wellbore	COYOTE TRAILS 33S-20-7N AWP
Facility	SEC.28-T01N-R68W		

WELLPATH DATA (192 stations) † = interpolated/extrapolated station

MD [ft]	Inclination [°]	Azimuth [°]	TVD [ft]	Vert Sect [ft]	North [ft]	East [ft]	Latitude	Longitude	DLS [°/100ft]	Comments
8619.00†	75.911	179.397	8072.12	1743.03	-1595.26	1321.10	40°00'48.945"N	105°00'07.847"W	8.82	CROSSED 460'SETBACK (460'FNL & 875'FEL, SEC.33)
8656.00	79.070	180.240	8080.14	1778.90	-1631.38	1321.22	40°00'48.588"N	105°00'07.846"W	8.82	
8751.00	79.560	181.290	8097.75	1871.41	-1724.72	1319.97	40°00'47.665"N	105°00'07.862"W	1.20	
8846.00	83.730	178.990	8111.56	1964.66	-1818.69	1319.75	40°00'46.737"N	105°00'07.864"W	5.00	
8942.00	87.640	178.460	8118.78	2059.91	-1914.37	1321.88	40°00'45.791"N	105°00'07.837"W	4.11	
9037.00	90.910	175.900	8119.98	2154.63	-2009.23	1326.55	40°00'44.854"N	105°00'07.777"W	4.37	
9133.00	92.460	179.680	8117.16	2250.25	-2105.09	1330.26	40°00'43.906"N	105°00'07.730"W	4.25	
9228.00	91.220	182.070	8114.10	2344.31	-2200.03	1328.80	40°00'42.968"N	105°00'07.748"W	2.83	
9324.00	89.000	183.320	8113.92	2438.95	-2295.91	1324.29	40°00'42.021"N	105°00'07.806"W	2.65	
9420.00	90.500	183.290	8114.34	2533.42	-2391.75	1318.76	40°00'41.074"N	105°00'07.878"W	1.56	
9515.00	88.940	183.380	8114.80	2626.89	-2486.58	1313.23	40°00'40.137"N	105°00'07.949"W	1.64	
9611.00	90.010	183.100	8115.68	2721.38	-2582.42	1307.81	40°00'39.189"N	105°00'08.019"W	1.15	
9706.00	89.000	180.340	8116.50	2815.28	-2677.37	1304.95	40°00'38.251"N	105°00'08.055"W	3.09	
9802.00	89.880	180.200	8117.44	2910.52	-2773.36	1304.50	40°00'37.302"N	105°00'08.061"W	0.93	
9897.00	88.210	180.080	8119.03	3004.78	-2868.34	1304.27	40°00'36.364"N	105°00'08.064"W	1.76	
9993.00	89.350	179.500	8121.07	3100.10	-2964.32	1304.62	40°00'35.415"N	105°00'08.060"W	1.33	
10088.00	90.310	179.160	8121.35	3194.53	-3059.31	1305.73	40°00'34.477"N	105°00'08.045"W	1.07	
10184.00	88.030	180.600	8122.74	3289.83	-3155.29	1305.93	40°00'33.528"N	105°00'08.043"W	2.81	
10279.00	88.500	180.030	8125.62	3384.03	-3250.25	1305.41	40°00'32.590"N	105°00'08.050"W	0.78	
10375.00	88.240	179.640	8128.35	3479.32	-3346.21	1305.69	40°00'31.641"N	105°00'08.046"W	0.49	
10470.00	91.090	178.300	8128.90	3573.81	-3441.18	1307.40	40°00'30.703"N	105°00'08.024"W	3.31	
10566.00	91.300	176.740	8126.90	3669.49	-3537.06	1311.55	40°00'29.755"N	105°00'07.971"W	1.64	
10661.00	86.960	177.210	8128.34	3764.24	-3631.90	1316.56	40°00'28.818"N	105°00'07.907"W	4.60	
10757.00	88.530	178.580	8132.12	3859.82	-3727.75	1320.08	40°00'27.871"N	105°00'07.862"W	2.17	
10852.00	89.980	178.680	8133.36	3954.36	-3822.72	1322.35	40°00'26.932"N	105°00'07.832"W	1.53	
10947.00	90.840	179.160	8132.68	4048.86	-3917.70	1324.14	40°00'25.994"N	105°00'07.809"W	1.04	
11043.00	90.700	180.410	8131.39	4144.19	-4013.68	1324.50	40°00'25.045"N	105°00'07.805"W	1.31	
11138.00	89.840	182.340	8130.94	4238.19	-4108.65	1322.23	40°00'24.107"N	105°00'07.834"W	2.22	
11234.00	88.620	181.960	8132.23	4332.98	-4204.57	1318.62	40°00'23.159"N	105°00'07.881"W	1.33	
11329.00	89.170	181.670	8134.06	4426.85	-4299.51	1315.62	40°00'22.221"N	105°00'07.919"W	0.65	



Actual Wellpath Report

COYOTE TRAILS 33S-20-7N AWP

Page 6 of 11



REFERENCE WELLPATH IDENTIFICATION			
Operator	EXTRACTION OIL & GAS	Slot	SLOT#10 COYOTE TRAILS 33S-20-7N (1147'FSL & 2193'FEL, SEC.28)
Area	COLORADO	Well	COYOTE TRAILS 33S-20-7N
Field	WELD COUNTY (NAD83/TRUE NORTH)	Wellbore	COYOTE TRAILS 33S-20-7N AWB
Facility	SEC.28-T01N-R68W		

WELLPATH DATA (192 stations)										
MD [ft]	Inclination [°]	Azimuth [°]	TVD [ft]	Vert Sect [ft]	North [ft]	East [ft]	Latitude	Longitude	DLS [°/100ft]	Comments
11425.00	90.140	181.340	8134.64	4521.81	-4395.47	1313.09	40°00'21.272"N	105°00'07.952"W	1.07	
11520.00	91.110	180.550	8133.60	4615.91	-4490.45	1311.53	40°00'20.334"N	105°00'07.972"W	1.32	
11616.00	87.800	179.320	8134.52	4711.20	-4586.43	1311.64	40°00'19.385"N	105°00'07.971"W	3.68	
11711.00	88.140	177.750	8137.88	4805.70	-4681.34	1314.06	40°00'18.447"N	105°00'07.940"W	1.69	
11807.00	89.310	178.040	8140.02	4901.34	-4777.25	1317.59	40°00'17.499"N	105°00'07.894"W	1.26	
11902.00	90.410	177.430	8140.25	4996.02	-4872.17	1321.34	40°00'16.561"N	105°00'07.846"W	1.32	
11998.00	91.950	177.570	8138.27	5091.71	-4968.06	1325.53	40°00'15.614"N	105°00'07.792"W	1.61	
12093.00	86.450	178.150	8139.60	5186.33	-5062.94	1329.08	40°00'14.676"N	105°00'07.747"W	5.82	
12189.00	87.680	178.040	8144.51	5281.84	-5158.76	1332.26	40°00'13.729"N	105°00'07.706"W	1.29	
12284.00	90.450	180.300	8146.06	5376.27	-5253.72	1333.64	40°00'12.791"N	105°00'07.688"W	3.76	
12379.00	91.660	179.890	8144.32	5470.54	-5348.71	1333.48	40°00'11.852"N	105°00'07.690"W	1.34	
12474.00	87.980	178.420	8144.61	5564.98	-5443.68	1334.88	40°00'10.914"N	105°00'07.673"W	4.17	
12569.00	87.350	176.890	8148.48	5659.60	-5538.51	1338.76	40°00'09.976"N	105°00'07.623"W	1.74	
12665.00	89.310	178.310	8151.28	5755.25	-5634.38	1342.78	40°00'09.029"N	105°00'07.571"W	2.52	
12760.00	90.560	178.450	8151.39	5849.84	-5729.34	1345.47	40°00'08.091"N	105°00'07.537"W	1.32	
12856.00	92.350	178.380	8148.95	5945.39	-5825.27	1348.12	40°00'07.143"N	105°00'07.503"W	1.87	
12951.00	91.250	178.630	8145.97	6039.91	-5920.19	1350.60	40°00'06.205"N	105°00'07.471"W	1.19	
13046.00	92.350	180.970	8142.98	6134.20	-6015.13	1350.93	40°00'05.266"N	105°00'07.467"W	2.72	
13142.00	90.390	182.670	8140.69	6229.05	-6111.05	1347.88	40°00'04.318"N	105°00'07.506"W	2.70	
13237.00	90.190	183.120	8140.21	6322.66	-6205.93	1343.08	40°00'03.381"N	105°00'07.568"W	0.52	
13332.00	90.000	184.180	8140.05	6416.04	-6300.73	1337.04	40°00'02.444"N	105°00'07.645"W	1.13	
13428.00	86.960	183.990	8142.60	6510.23	-6396.44	1330.20	40°00'01.498"N	105°00'07.733"W	3.17	
13523.00	85.760	181.900	8148.63	6603.62	-6491.12	1325.33	40°00'00.562"N	105°00'07.796"W	2.53	
13619.00	87.070	179.720	8154.63	6698.55	-6586.92	1323.98	39°59'59.616"N	105°00'07.813"W	2.65	
13714.00	89.610	178.990	8157.38	6792.93	-6681.86	1325.05	39°59'58.677"N	105°00'07.800"W	2.78	
13810.00	90.660	178.660	8157.16	6888.45	-6777.84	1327.01	39°59'57.729"N	105°00'07.775"W	1.15	
13905.00	89.630	179.130	8156.92	6982.95	-6872.82	1328.85	39°59'56.790"N	105°00'07.751"W	1.19	
14000.00	90.700	178.600	8156.64	7077.47	-6967.80	1330.73	39°59'55.852"N	105°00'07.727"W	1.26	
14096.00	88.690	179.300	8157.15	7172.95	-7063.78	1332.49	39°59'54.903"N	105°00'07.704"W	2.22	
14192.00	89.260	179.500	8158.87	7268.35	-7159.75	1333.49	39°59'53.955"N	105°00'07.692"W	0.63	



Actual Wellpath Report

COYOTE TRAILS 33S-20-7N AWP

Page 7 of 11



REFERENCE WELLPATH IDENTIFICATION

Operator	EXTRACTION OIL & GAS	Slot	SLOT#10 COYOTE TRAILS 33S-20-7N (1147'FSL & 2193'FEL, SEC.28)
Area	COLORADO	Well	COYOTE TRAILS 33S-20-7N
Field	WELD COUNTY (NAD83/TRUE NORTH)	Wellbore	COYOTE TRAILS 33S-20-7N AWB
Facility	SEC.28-T01N-R68W		

WELLPATH DATA (192 stations)

MD [ft]	Inclination [°]	Azimuth [°]	TVD [ft]	Vert Sect [ft]	North [ft]	East [ft]	Latitude	Longitude	DLS [°/100ft]	Comments
14287.00	89.860	180.970	8159.60	7362.61	-7254.75	1333.10	39°59'53.016"N	105°00'07.697"W	1.67	
14383.00	87.760	180.730	8161.59	7457.70	-7350.71	1331.68	39°59'52.068"N	105°00'07.715"W	2.20	
14478.00	89.310	180.870	8164.02	7551.80	-7445.67	1330.35	39°59'51.129"N	105°00'07.732"W	1.64	
14573.00	91.520	180.300	8163.34	7645.97	-7540.65	1329.38	39°59'50.191"N	105°00'07.745"W	2.40	
14668.00	87.470	181.730	8164.17	7740.04	-7635.61	1327.70	39°59'49.252"N	105°00'07.766"W	4.52	
14764.00	86.250	182.220	8169.43	7834.73	-7731.41	1324.40	39°59'48.306"N	105°00'07.809"W	1.37	
14859.00	86.970	181.190	8175.05	7928.49	-7826.20	1321.58	39°59'47.369"N	105°00'07.845"W	1.32	
14955.00	88.100	181.160	8179.18	8023.44	-7922.09	1319.61	39°59'46.421"N	105°00'07.870"W	1.18	
15050.00	90.330	179.890	8180.48	8117.62	-8017.07	1318.74	39°59'45.483"N	105°00'07.882"W	2.70	
15146.00	89.660	178.660	8180.49	8213.06	-8113.06	1319.95	39°59'44.534"N	105°00'07.866"W	1.46	
15241.00	90.870	178.180	8180.05	8307.64	-8208.02	1322.57	39°59'43.596"N	105°00'07.833"W	1.37	
15336.00	90.350	179.100	8179.04	8402.18	-8302.99	1324.83	39°59'42.657"N	105°00'07.804"W	1.11	
15432.00	89.440	180.290	8179.21	8497.54	-8398.98	1325.34	39°59'41.708"N	105°00'07.797"W	1.56	
15528.00	90.910	179.820	8178.92	8592.82	-8494.98	1325.25	39°59'40.760"N	105°00'07.798"W	1.61	
15623.00	88.720	180.050	8179.23	8687.14	-8589.97	1325.35	39°59'39.821"N	105°00'07.797"W	2.32	
15718.00	89.480	179.880	8180.72	8781.44	-8684.96	1325.41	39°59'38.882"N	105°00'07.796"W	0.82	
15814.00	90.670	180.410	8180.59	8876.70	-8780.96	1325.17	39°59'37.934"N	105°00'07.800"W	1.36	
15909.00	86.850	178.590	8182.65	8971.06	-8875.91	1326.00	39°59'36.995"N	105°00'07.789"W	4.45	
16005.00	85.760	178.090	8188.84	9066.46	-8971.67	1328.77	39°59'36.049"N	105°00'07.753"W	1.25	
16100.00	88.290	178.090	8193.77	9160.96	-9066.48	1331.93	39°59'35.112"N	105°00'07.713"W	2.66	
16195.00	89.840	177.900	8195.32	9255.59	-9161.41	1335.26	39°59'34.174"N	105°00'07.670"W	1.64	
16291.00	91.050	177.950	8194.57	9351.24	-9257.34	1338.73	39°59'33.226"N	105°00'07.626"W	1.26	
16386.00	89.380	179.930	8194.21	9445.73	-9352.31	1340.49	39°59'32.287"N	105°00'07.603"W	2.73	
16482.00	88.730	180.780	8195.80	9540.94	-9448.30	1339.90	39°59'31.339"N	105°00'07.611"W	1.11	
16577.00	89.330	180.390	8197.40	9635.11	-9543.28	1338.93	39°59'30.400"N	105°00'07.623"W	0.75	
16672.00	90.750	180.580	8197.34	9729.32	-9638.27	1338.12	39°59'29.461"N	105°00'07.634"W	1.51	
16768.00	89.630	179.810	8197.02	9824.57	-9734.27	1337.79	39°59'28.513"N	105°00'07.638"W	1.42	
16863.00	89.790	180.210	8197.50	9918.87	-9829.27	1337.78	39°59'27.574"N	105°00'07.638"W	0.45	
16958.00	89.400	180.600	8198.17	10013.09	-9924.26	1337.11	39°59'26.635"N	105°00'07.647"W	0.58	
17054.00	88.630	179.880	8199.82	10108.33	-10020.25	1336.70	39°59'25.687"N	105°00'07.652"W	1.10	



Actual Wellpath Report

COYOTE TRAILS 33S-20-7N AWP

Page 8 of 11



REFERENCE WELLPATH IDENTIFICATION			
Operator	EXTRACTION OIL & GAS	Slot	SLOT#10 COYOTE TRAILS 33S-20-7N (1147'FSL & 2193'FEL, SEC.28)
Area	COLORADO	Well	COYOTE TRAILS 33S-20-7N
Field	WELD COUNTY (NAD83/TRUE NORTH)	Wellbore	COYOTE TRAILS 33S-20-7N AWP
Facility	SEC.28-T01N-R68W		

WELLPATH DATA (192 stations)										
MD [ft]	Inclination [°]	Azimuth [°]	TVD [ft]	Vert Sect [ft]	North [ft]	East [ft]	Latitude	Longitude	DLS "/100ft	Comments
17149.00	89.870	179.600	8201.07	10202.67	-10115.23	1337.14	39°59'24.748"N	105°00'07.647"W	1.34	
17245.00	88.420	179.630	8202.50	10298.03	-10211.22	1337.78	39°59'23.799"N	105°00'07.639"W	1.51	
17340.00	89.750	179.500	8204.02	10392.41	-10306.20	1338.50	39°59'22.861"N	105°00'07.629"W	1.41	
17436.00	87.140	177.830	8206.62	10487.91	-10402.13	1340.74	39°59'21.913"N	105°00'07.601"W	3.23	
17531.00	87.910	176.820	8210.72	10582.55	-10496.94	1345.17	39°59'20.976"N	105°00'07.544"W	1.34	
17627.00	88.810	176.780	8213.47	10678.31	-10592.75	1350.52	39°59'20.029"N	105°00'07.475"W	0.94	
17722.00	89.880	174.960	8214.56	10773.18	-10687.49	1357.36	39°59'19.093"N	105°00'07.387"W	2.22	
17817.00	90.210	172.320	8214.48	10868.17	-10781.89	1367.89	39°59'18.160"N	105°00'07.252"W	2.80	
17913.00	89.880	168.170	8214.41	10964.03	-10876.49	1384.15	39°59'17.225"N	105°00'07.043"W	4.34	
18008.00	89.790	163.330	8214.68	11058.23	-10968.53	1407.53	39°59'16.315"N	105°00'06.743"W	5.10	
18104.00	89.840	159.800	8214.99	11152.29	-11059.59	1437.88	39°59'15.415"N	105°00'06.353"W	3.68	BAKER DRILLED USING THIRD PARTY MWD-LAST SURVEY (341'FSL & 1302'FEL,SEC.04)
18227.00	89.840	159.800	8215.33	11272.00	-11175.03	1480.35	39°59'14.275"N	105°00'05.808"W	0.00	PROJECTION TO BIT (226'FSL & 1230'FEL, SEC.04)



Actual Wellpath Report

COYOTE TRAILS 33S-20-7N AWP

Page 9 of 11



REFERENCE WELLPATH IDENTIFICATION			
Operator	EXTRACTION OIL & GAS	Slot	SLOT#10 COYOTE TRAILS 33S-20-7N (1147'FSL & 2193'FEL, SEC.28)
Area	COLORADO	Well	COYOTE TRAILS 33S-20-7N
Field	WELD COUNTY (NAD83/TRUE NORTH)	Wellbore	COYOTE TRAILS 33S-20-7N AWB
Facility	SEC.28-T01N-R68W		

TARGETS								
Name	TVD [ft]	North [ft]	East [ft]	Grid East [US ft]	Grid North [US ft]	Latitude	Longitude	Shape
SEC.03-T01S-R68W	-4.00	-0.71	162.22	3138269.92	1249778.85	40°01'04.703"N	105°00'22.741"W	polygon
SEC.04-T01S-R68W	-4.00	-0.71	162.22	3138269.92	1249778.85	40°01'04.703"N	105°00'22.741"W	polygon
SEC.27-T01N-R68W	-4.00	-0.71	162.22	3138269.92	1249778.85	40°01'04.703"N	105°00'22.741"W	point
SEC.28-T01N-R68W	-4.00	-0.71	162.22	3138269.92	1249778.85	40°01'04.703"N	105°00'22.741"W	polygon
SEC.33-T01N-R68W	-4.00	-0.71	162.22	3138269.92	1249778.85	40°01'04.703"N	105°00'22.741"W	polygon
SEC.34-T01N-R68W	-4.00	-0.71	162.22	3138269.92	1249778.85	40°01'04.703"N	105°00'22.741"W	polygon
SEC.03-T01S-R68W (150'FSL SETBACKS)	7896.00	-0.71	162.22	3138269.92	1249778.85	40°01'04.703"N	105°00'22.741"W	polygon
SEC.04-T01S-R68W (150'FSL SETBACKS)	7896.00	0.00	36.18	3138143.88	1249778.86	40°01'04.710"N	105°00'24.361"W	polygon
SEC.33-T01N-R68W (460'FNL SETBACKS)	7896.00	-0.71	162.22	3138269.92	1249778.85	40°01'04.703"N	105°00'22.741"W	polygon
SEC.34-T01N-R68W (460'FNL SETBACKS)	7896.00	-0.71	162.22	3138269.92	1249778.85	40°01'04.703"N	105°00'22.741"W	polygon
COYOTE TRAILS 33S-20-7N BHL (150'FSL & 1342'FEL, SEC.04)	8100.00	-11250.98	1367.77	3139537.96	1238535.87	39°59'13.524"N	105°00'07.254"W	point
COYOTE TRAILS 33S-20-7N LP (460'FNL & 886'FEL, SEC.33)	8100.00	-1592.61	1310.13	3139426.62	1248193.41	40°00'48.971"N	105°00'07.988"W	point



Actual Wellpath Report

COYOTE TRAILS 33S-20-7N AWP

Page 10 of 11



REFERENCE WELLPATH IDENTIFICATION			
Operator	EXTRACTION OIL & GAS	Slot	SLOT#10 COYOTE TRAILS 33S-20-7N (1147'FSL & 2193'FEL, SEC.28)
Area	COLORADO	Well	COYOTE TRAILS 33S-20-7N
Field	WELD COUNTY (NAD83/TRUE NORTH)	Wellbore	COYOTE TRAILS 33S-20-7N AWB
Facility	SEC.28-T01N-R68W		

WELLPATH COMPOSITION - Ref Wellbore: COYOTE TRAILS 33S-20-7N AWB Ref Wellpath: COYOTE TRAILS 33S-20-7N AWP				
Start MD [ft]	End MD [ft]	Positional Uncertainty Model	Log Name/Comment	Wellbore
29.00	1545.00	ISCWSA MWD, Rev. 4 (Standard)	BAKER DRILLED USING THIRD PARTY MWD <211-1545>	COYOTE TRAILS 33S-20-7N AWB
1545.00	18104.00	ISCWSA MWD, Rev. 4 (Standard)	BAKER DRILLED USING THIRD PARTY MWD <1661-18104>	COYOTE TRAILS 33S-20-7N AWB
18104.00	18227.00	Blind Drilling (std)	Projection to bit	COYOTE TRAILS 33S-20-7N AWB



Actual Wellpath Report

COYOTE TRAILS 33S-20-7N AWP

Page 11 of 11



REFERENCE WELLPATH IDENTIFICATION			
Operator	EXTRACTION OIL & GAS	Slot	SLOT#10 COYOTE TRAILS 33S-20-7N (1147'FSL & 2193'FEL, SEC.28)
Area	COLORADO	Well	COYOTE TRAILS 33S-20-7N
Field	WELD COUNTY (NAD83/TRUE NORTH)	Wellbore	COYOTE TRAILS 33S-20-7N AWP
Facility	SEC.28-T01N-R68W		

WELLPATH COMMENTS				
MD [ft]	Inclination [°]	Azimuth [°]	TVD [ft]	Comment
211.00	0.880	317.750	210.99	BAKER DRILLED USING THIRD PARTY MWD-FIRST SURVEY
8619.00	75.911	179.397	8072.12	CROSSED 460'SETBACK (460'FNL & 875'FEL, SEC.33)
18104.00	89.840	159.800	8214.99	BAKER DRILLED USING THIRD PARTY MWD-LAST SURVEY (341'FSL & 1302'FEL, SEC.04)
18227.00	89.840	159.800	8215.33	PROJECTION TO BIT (226'FSL & 1230'FEL, SEC.04)