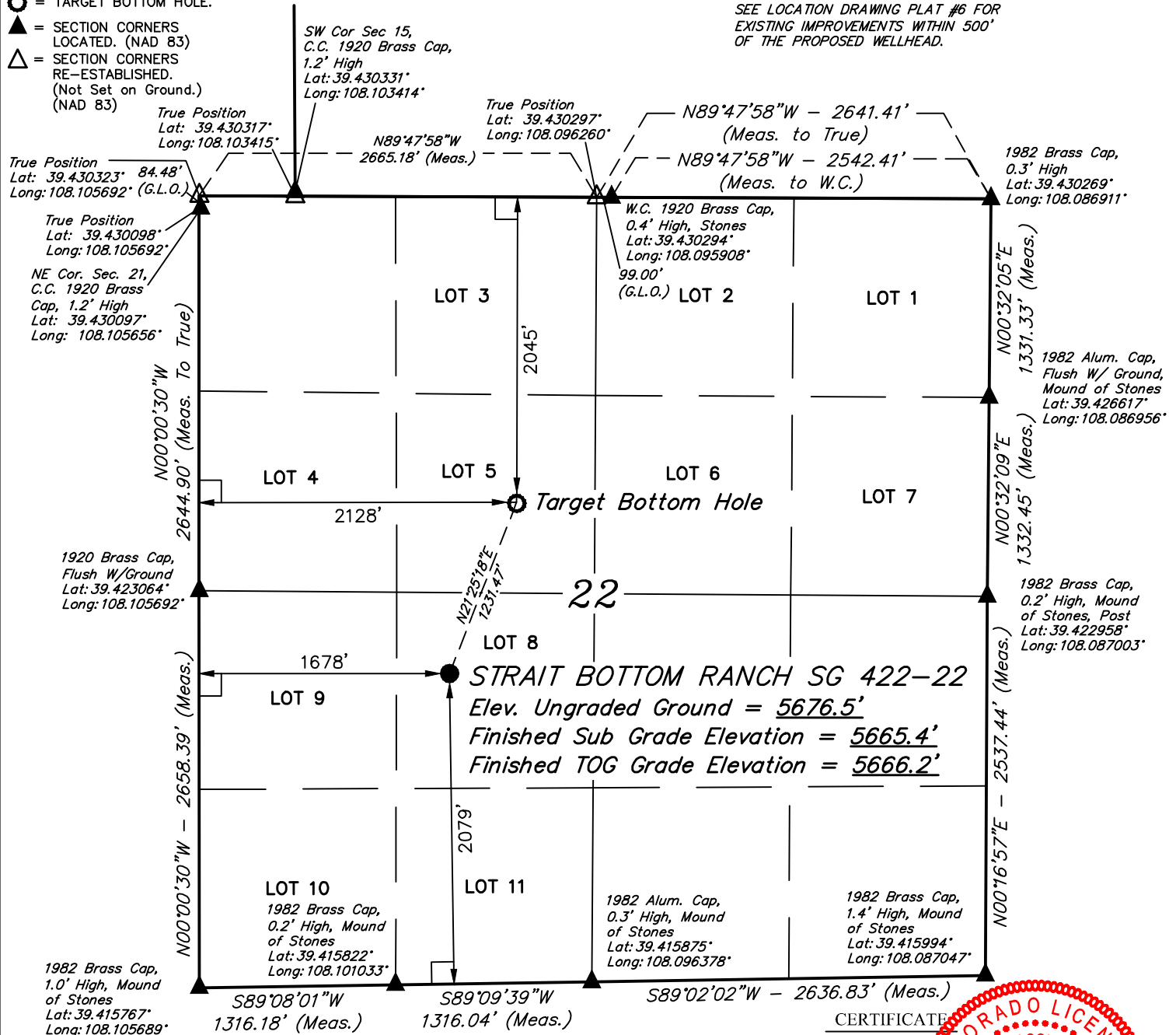


**LEGEND:**

- = 90° SYMBOL  
 ● = PROPOSED WELLHEAD.  
 ○ = TARGET BOTTOM HOLE.  
 ▲ = SECTION CORNERS LOCATED. (NAD 83)  
 △ = SECTION CORNERS RE-ESTABLISHED. (Not Set on Ground.) (NAD 83)

**T7S, R96W, 6th P.M.**

NOTE:  
SEE LOCATION DRAWING PLAT #6 FOR  
EXISTING IMPROVEMENTS WITHIN 500'  
OF THE PROPOSED WELLHEAD.



PDOP = 1.4



NAD 83 (SURFACE LOCATION)	NAD 83 (TARGET BOTTOM HOLE)
LATITUDE = 39°25'17.56" (39.421543)	LATITUDE = 39°25'28.88" (39.424690)
LONGITUDE = 108°05'59.11" (108.099754)	LONGITUDE = 108°05'53.38" (108.098162)
STATE PLANE NAD 83 (CO. CEN.)	STATE PLANE NAD 83 (CO. CEN.)
N: 1588934.97 E: 2265672.31	N: 1590067.61 E: 2266154.65

**CERTIFICATE**

THIS IS TO CERTIFY THAT THE ABOVE PLAT WAS PREPARED FROM FIELD NOTES OF ACTUAL SURVEYS MADE BY ME OR UNDER MY SUPERVISION AND THAT THE LOCATION HAS BEEN STAKED ON THE GROUND AS SHOWN ON THE PLAT AND THAT THE SAME ARE TRUE AND CORRECT TO THE BEST OF MY KNOWLEDGE AND BELIEF.

**PLAT #1**

REGISTERED LAND SURVEYOR  
REGISTRATION NO. 180  
STATE OF COLORADO 04-11-18

REV: 1 04-11-18 C.D.L. (NAME CHANGE)

**BASIS OF BEARINGS**

BASIS OF BEARINGS IS A G.P.S. OBSERVATION

**BASIS OF ELEVATION**

SPOT ELEVATION AT THE NORTHWEST CORNER OF SECTION 30, T7S, R95W, 6th P.M., TAKEN FROM THE FORKED GULCH, QUADRANGLE, COLORADO, GARFIELD COUNTY, 7.5 MINUTE QUAD. (TOPOGRAPHIC MAP) PUBLISHED BY THE UNITED STATES DEPARTMENT OF THE INTERIOR, GEOLOGICAL SURVEY. SAID ELEVATION IS MARKED AS BEING 5966 FEET.

**UELS, LLC**

Corporate Office \* 85 South 200 East  
Vernal, UT 84078 \* (435) 789-1017



**TEP Rocky Mountain LLC**

**STRAIT BOTTOM RANCH SG 422-22  
LOT 8, SECTION 22, T7S, R96W, 6th P.M.  
GARFIELD COUNTY, COLORADO**

SURVEYED BY	BART HUNTING, C.R.	02-16-18	SCALE
DRAWN BY	T.L.L.	02-23-18	1" = 1000'

**WELL LOCATION PLAT**