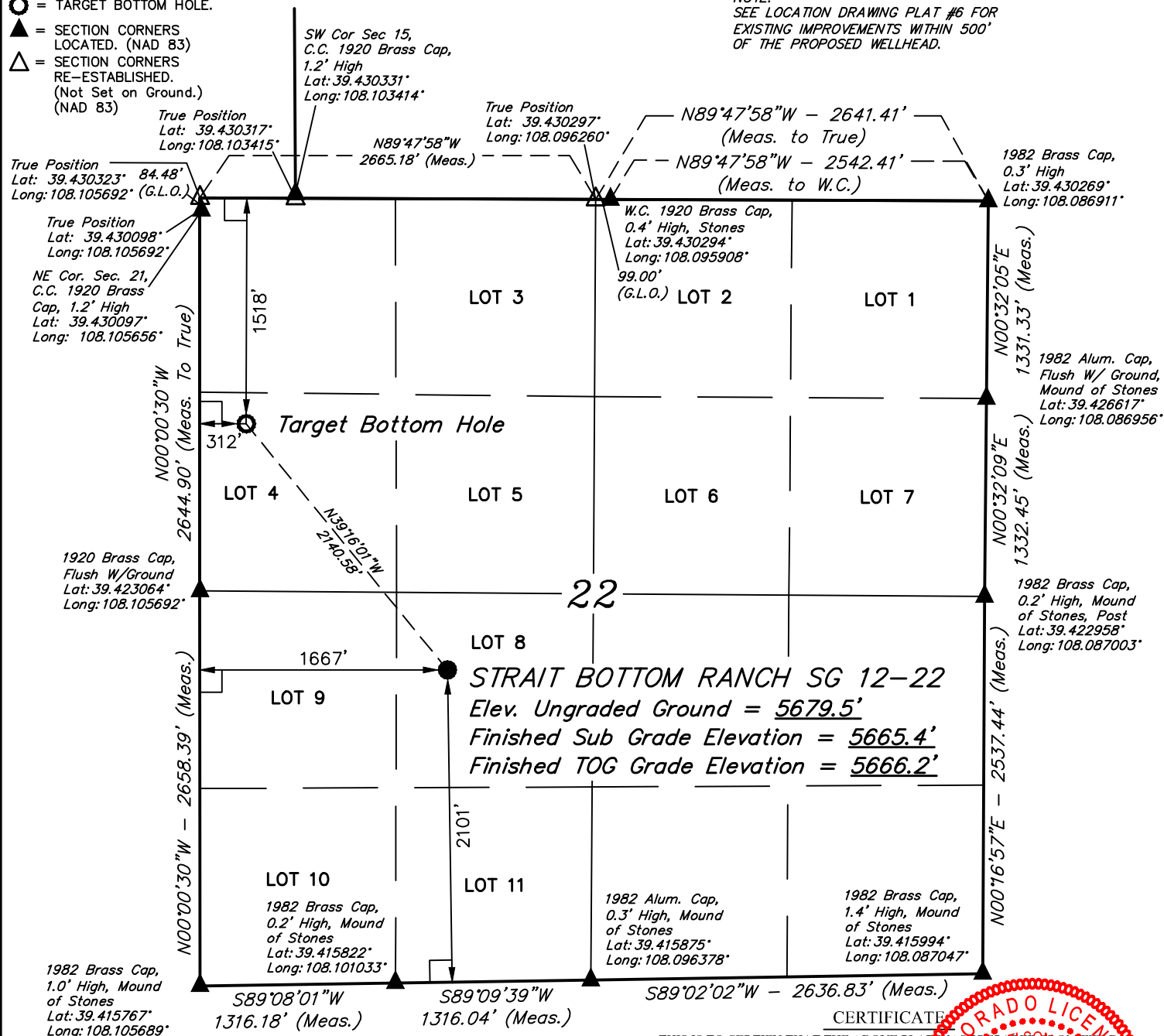


LEGEND:

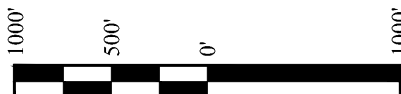
- = 90° SYMBOL
 ● = PROPOSED WELLHEAD.
 ○ = TARGET BOTTOM HOLE.
 ▲ = SECTION CORNERS LOCATED. (NAD 83)
 △ = SECTION CORNERS RE-ESTABLISHED. (Not Set on Ground.) (NAD 83)

T7S, R96W, 6th P.M.

NOTE:
SEE LOCATION DRAWING PLAT #6 FOR
EXISTING IMPROVEMENTS WITHIN 500'
OF THE PROPOSED WELLHEAD.



PDOP = 1.4



NAD 83 (SURFACE LOCATION)	NAD 83 (TARGET BOTTOM HOLE)
LATITUDE = 39°25'17.78" (39.421604)	LATITUDE = 39°25'34.15" (39.426153)
LONGITUDE = 108°05'59.25" (108.099792)	LONGITUDE = 108°06'16.51" (108.104586)
STATE PLANE NAD 83 (CO. CEN.)	STATE PLANE NAD 83 (CO. CEN.)
N: 1588957.38 E: 2265662.23	N: 1590652.30 E: 2264355.94

PLAT #1

REGISTERED LAND SURVEYOR
REGISTRATION NO. 180
STATE OF COLORADO 04-11-18

REV: 1 04-11-18 C.D.L. (NAME CHANGE)

BASIS OF BEARINGS

BASIS OF BEARINGS IS A G.P.S. OBSERVATION

BASIS OF ELEVATION

SPOT ELEVATION AT THE NORTHWEST CORNER OF SECTION 30, T7S, R95W, 6th P.M., TAKEN FROM THE FORKED GULCH, QUADRANGLE, COLORADO, GARFIELD COUNTY, 7.5 MINUTE QUAD. (TOPOGRAPHIC MAP) PUBLISHED BY THE UNITED STATES DEPARTMENT OF THE INTERIOR, GEOLOGICAL SURVEY. SAID ELEVATION IS MARKED AS BEING 5966 FEET.

UELS, LLC

Corporate Office * 85 South 200 East
Vernal, UT 84078 * (435) 789-1017



TEP Rocky Mountain LLC

**STRAIT BOTTOM RANCH SG 12-22
LOT 8, SECTION 22, T7S, R96W, 6th P.M.
GARFIELD COUNTY, COLORADO**

SURVEYED BY	BART HUNTING, C.R.	02-16-18	SCALE
DRAWN BY	T.L.L.	02-23-18	1" = 1000'

WELL LOCATION PLAT