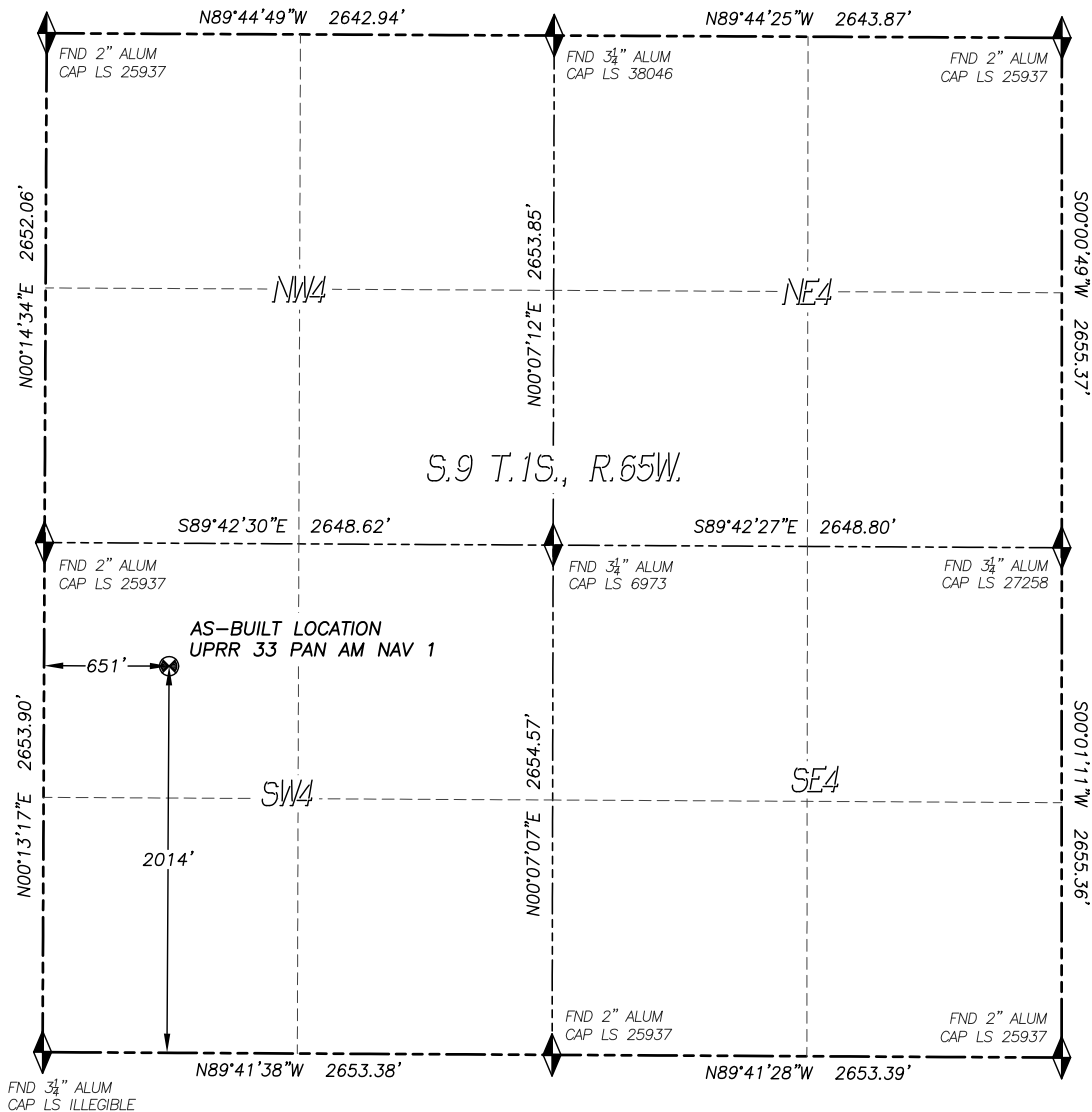


WELL AS-BUILT SURVEY

UPRR 33 PAN AM NAV 1

SECTION 9, TOWNSHIP 1 SOUTH, RANGE 65 WEST OF THE 6TH P.M.



IN ACCORDANCE WITH A REQUEST FROM CONFLUENCE RESOURCES., DALEY LAND SURVEYING, INC. HAS DETERMINED THE SURFACE LOCATION OF THE UPRR 33 PAN AM NAV 1 WELL TO BE 2014' FSL, 651' FWL, AS MEASURED AT NINETY (90) DEGREES FROM THE SECTION LINES OF SECTION 9, TOWNSHIP 1 SOUTH, RANGE 65 WEST, OF THE 6TH PRINCIPAL MERIDIAN, ADAMS COUNTY, COLORADO.

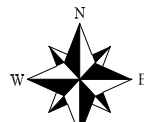
I HEREBY STATE THAT THIS WELL AS-BUILT SURVEY WAS PREPARED BY ME OR UNDER MY DIRECT SUPERVISION, THAT THE WORK WAS COMPLETED ON 6/7/2018 FOR AND ON BEHALF OF CONFLUENCE RESOURCES., AND THAT THIS MAP DOES NOT REPRESENT A BOUNDARY SURVEY, IT IS NOT A LAND SURVEY PLAT OR AN IMPROVEMENT SURVEY PLAT AND IT IS NOT TO BE RELIED UPON FOR THE ESTABLISHMENT OF FENCE, BUILDING OR OTHER FUTURE IMPROVEMENT LINES.

NOTES:

- 1) BEARINGS FOR THIS MAP ARE ASSUMED AND BASED UPON GPS OBSERVATIONS MADE BETWEEN MONUMENTS LOCATED AT THE WEST QUARTER CORNER AND NORTHWEST CORNER OF SECTION 9, T.1S., R.65W.
- 2) HORIZONTAL DATUM IS NAD83.
- 3) VERTICAL DATUM IS NAVD88 AND ORIGINATES FROM THE LOCAL C.O.R.S. NETWORK, UTILIZING THE GEOID12A MODEL.
- 4) SURFACE USE: AGRICULTURAL.
- 5) INST. OPERATOR: KYLE DALEY.
- 6) LOCATION DETERMINED WITH METAL LOCATOR, THE TOP OF THE WELL HEAD WAS LOCATED.



DALEY LAND SURVEYING, INC.
PARKER, COLORADO
303.953.9841

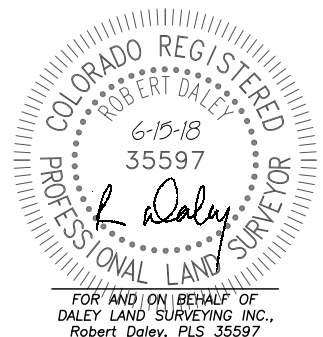


0 1000
SCALE: 1" = 1000'

NAD 83 LATITUDE AND LONGITUDE

SURFACE LOCATION:

LATITUDE: N39.97786°
LONGITUDE: W104.67612°
ELEV: 5145'
PDOP: 1.1
QTR/QTR: NE4/SW4



LOCAATION PICTURES
UPRR 33 PAN AM NAV 1
SECTION 9, TOWNSHIP 1 SOUTH, RANGE 65 WEST OF THE 6TH P.M.

DATE: 6/7/18



LOOKING NORTH



LOOKING WEST



LOOKING EAST



LOOKING SOUTH