

Amoco Production

UPRR 33 Pan Am Nav 1 - P&A Re-Entry

EXISTING WELLBORE DIAGRAM

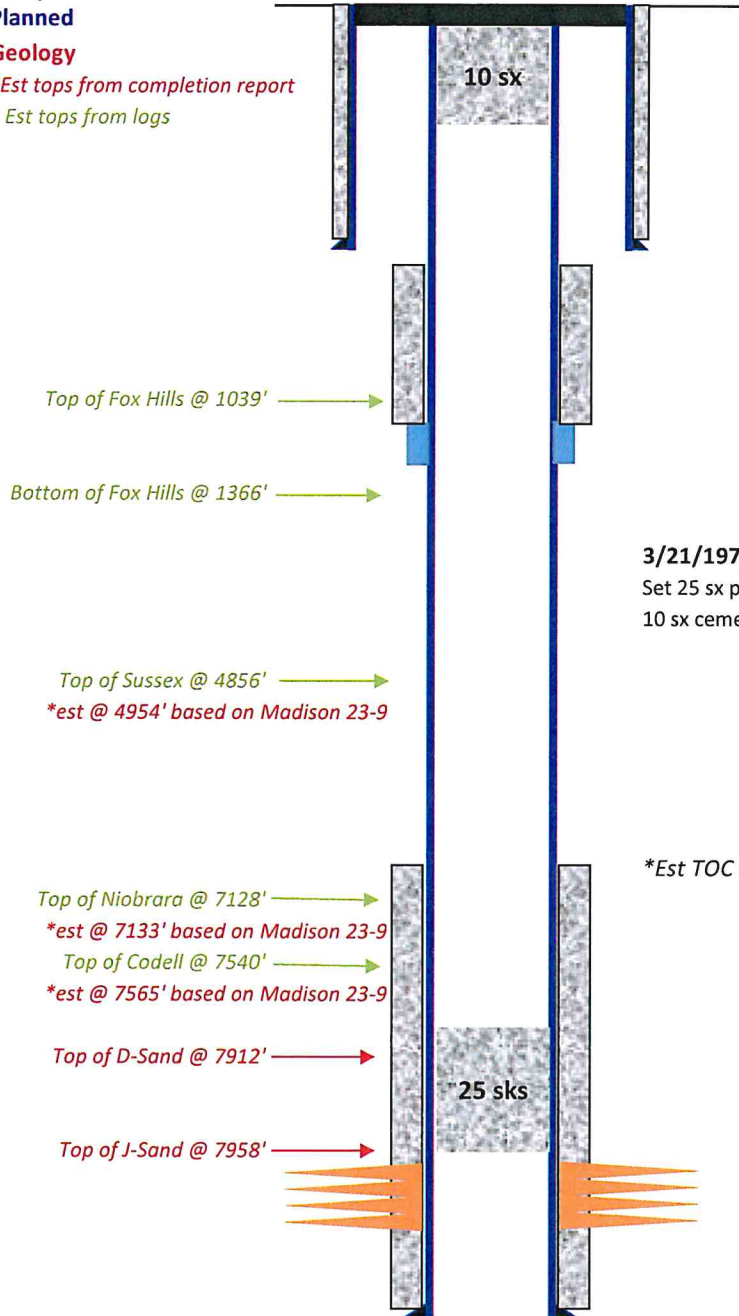
Completed

Planned

Geology

**Est tops from completion report*

**Est tops from logs*



Elevation: 5145' GL, 5154' KB

Location: 1980' FSL, 660' FWL
NWSW Sec 9, T1S, R65W
Adams County, CO

Field: Wattenberg

Zone: "Muddy" J-Sand

Spud Date: 11/29/1970

API: 05-001-06229

Surface Casing:

8-5/8" 24#, set @ 234' in 12-1/4" OH
Cement w/ 200 sx

DV Tool @ 1275', est TOC @ 250'

3/21/1972 P&A

Set 25 sx plug @ 7960' to 7860' (25 sx plug calc as ~ 330' fill)
10 sx cement @ surface

**Est TOC @ 7045', Cement Calculation*

Perf: J-Sand

7972' - 7978', 1 SPF (7 holes)
7995' - 8001', 1 SPF (7 holes)
8006' - 8012', 1 SPF (7 holes)
8026' - 8028', 1 SPF (3 holes)

Treatment: 3/2/1971

Acidize w/ 250 gal. 15% MA frac w/ 9000# 20/40 sand,
9000# 10/20 sand, & 2500# 8/12 beads

Production Casing:

4-1/2" 10.5# & 11.6#, set @ 8120' in 7-7/8" OH
1st Stage - 200 sx 50/50 PozMix

2nd Stage - 200 sx 50/50 Pozmix, DV tool @ 1275'

Original PBTD: 8052'

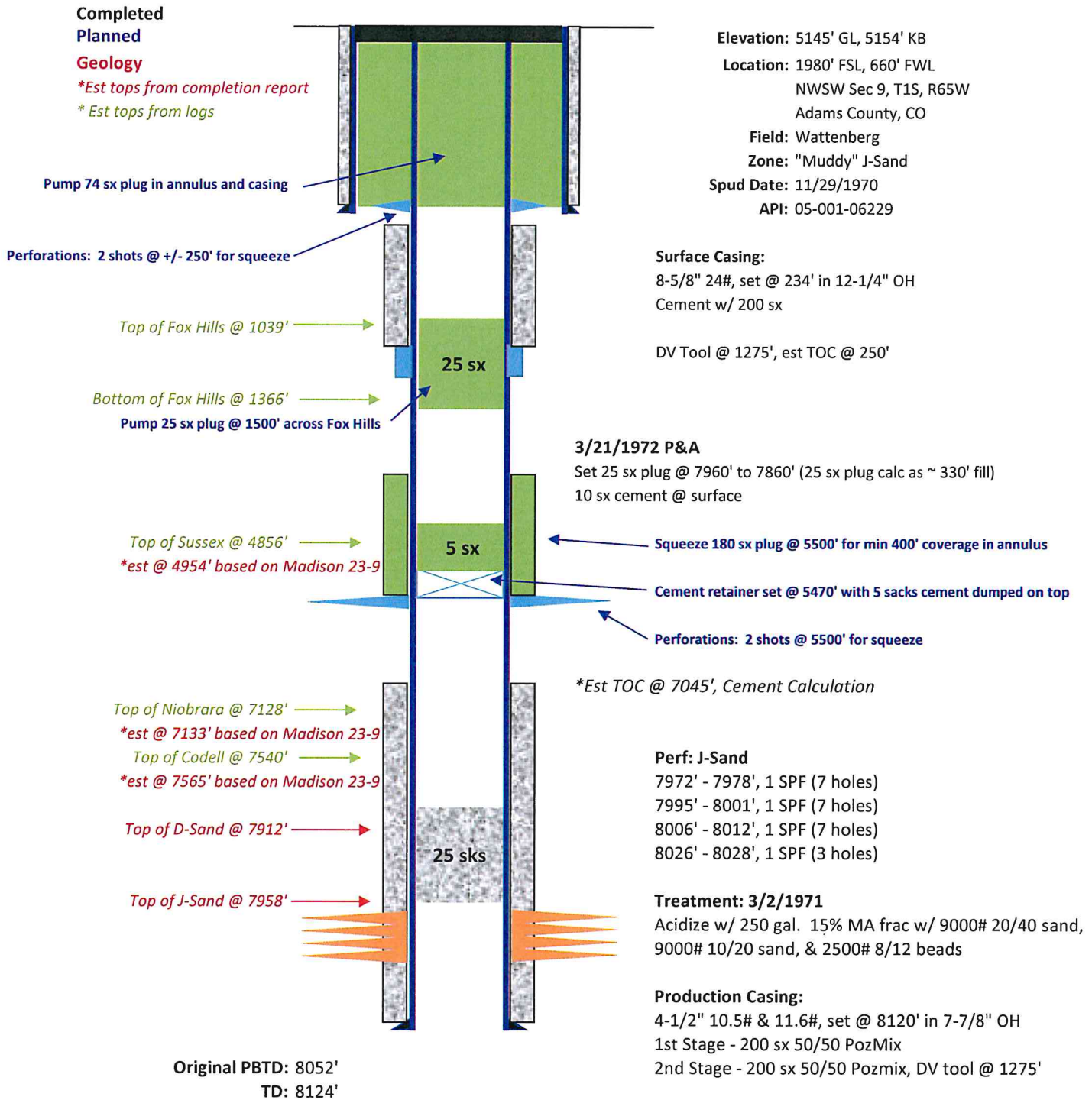
TD: 8124'

(Not to Scale)

Amoco Production

UPRR 33 Pan Am Nav 1 - P&A Re-Entry

PLANNED WELLBORE DIAGRAM



(Not to Scale)