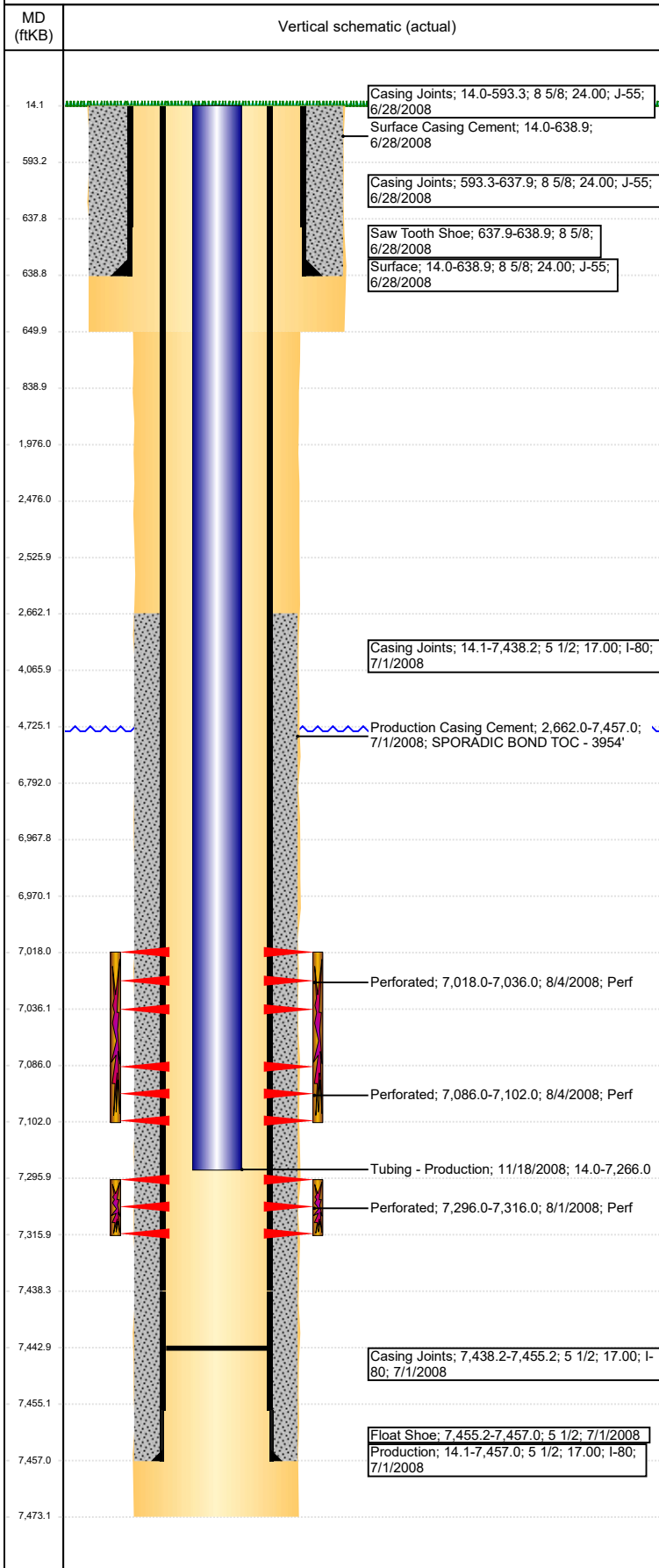


Wellbore Schematic Input Report

Well Name: ANDERSEN 35-33

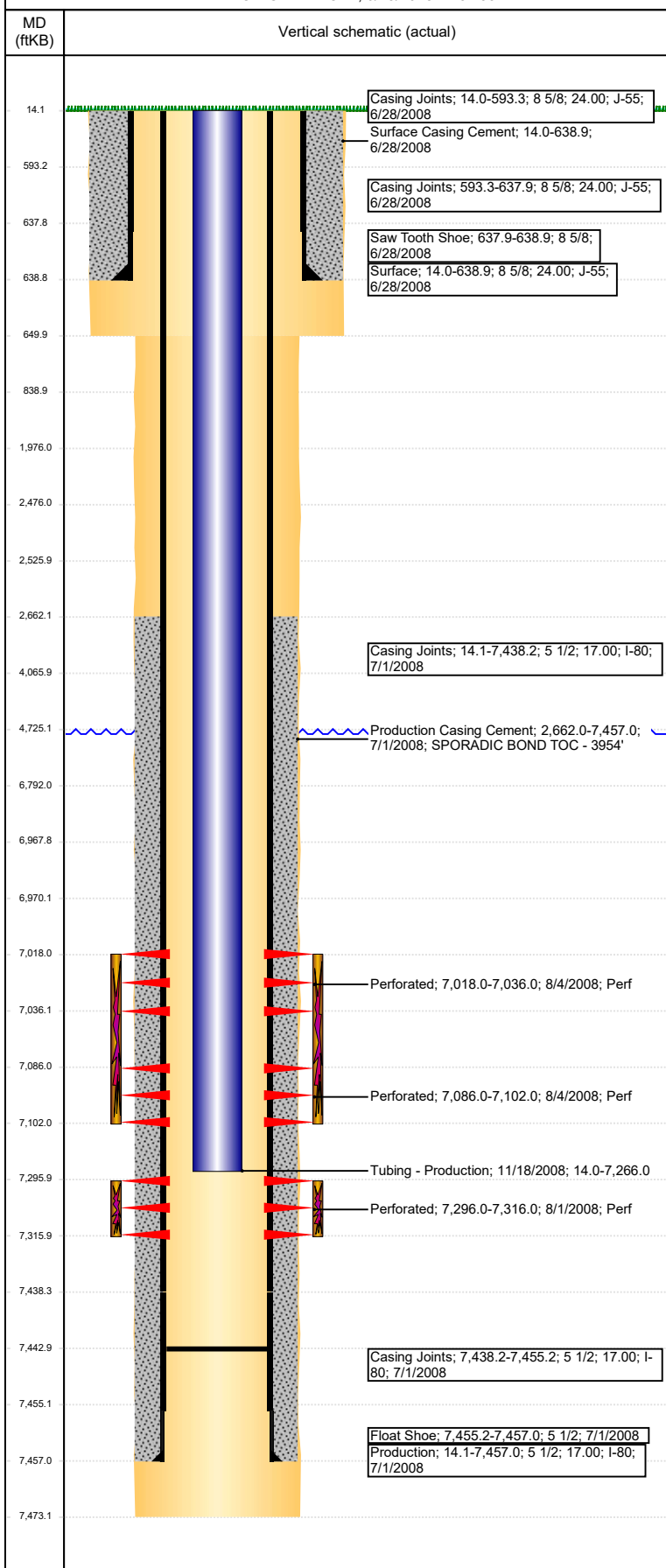
DEVIATED - ORIGINAL HOLE, 6/15/2018 11:37:31 AM



Well Header							
API 05-123-24516		Well Report Center 425859171			Well Configuration Type DEVIATED		
Original KB Elevation (ft) 4,854		KB - GL / MSL (ftKB) 14.00		Spud Date 6/27/2008		P & A Date	
Production Route C2-09			Well Production Status PR				SoRT Ignore No
Directions To Well WCR 39 & WCR 38, E 1 3/4, N INTO					Actual Latitude (°) 40.26291900	Actual Longitude (°) -104.67005100	
Comment							
Congressional Location							
Quarter 3 SE	Quarter 4 SW	Section 33	Township 4	Twnshp N/S Dir N	Range 65	Range E/W Dir W	
Rig Operator							
Rig Operator							
Plug Back Total Depths							
Date	Depth (ftKB)	Method			Com		
7/30/2008	7,443.0	CASED HOLE LOG			DEPTH LOGGER ON CBL		
Wellbore Sections							
Section Des		Size (in)		Act Top, MD (ftKB)		Act Btm, MD (ftKB)	
SURFACE		12 1/4		14		650	
PRODUCTION		7 7/8		650		7,473	
Zone Statuses							
Zone Name		Status Date			Status		
NIOBRARA		9/4/2008			PR		
CODELL		9/4/2008			PR		
Casing Strings							
Surface, 638.9ftKB							
Casing Description Surface	Run Date 6/28/2008	OD (in) 8 5/8	Wt/Len (l... 24.00	Grade J-55	Top, MD (ft... 14.0	MD (ftKB) 638.9	
Production, 7,457.0ftKB							
Casing Description Production	Run Date 7/1/2008	OD (in) 5 1/2	Wt/Len (l... 17.00	Grade I-80	Top, MD (ft... 14.1	MD (ftKB) 7,457.0	
Cement							
Des			Start Date		Top (ftKB)		Btm (ftKB)
Surface Casing Cement			6/28/2008		14.0		638.9
Production Casing Cement			7/1/2008		2,662.0		7,457.0
Proposed Cement							
Des					Top (ftKB)		Btm (ftKB)
Balance Plug					2,476.0		2,526.0
					1,976.0		2,476.0
Balance Plug					4,066.0		4,725.0
Balance Plug					6,792.0		6,968.0
Balance Plug					14.0		839.0
					1,976.0		2,476.0
					1,976.0		2,476.0
Tubing Strings							
Tubing Description Tubing - Production	Run Date 11/18/2008	String... 2 3/8	ID (in) 2.00	Wt (lb/ft) 4.70	Grade J-55	Len (ft) 7,252.00	Set De...
Tubing Components							
Item Des	OD (in)	Wt (lb/ft)	Grade	Jts	Len (ft)	Btm (ftKB)	Btm (TVD) (ftKB)
EUE 8rd Tubing	2 3/8	4.70	J-55	230	7,250.50	7,264.5	
Seal Nipple	2 3/8			1	1.00	7,265.5	
Notched collar	2 3/8			1	0.50	7,266.0	
Other In Hole							
Run Date	Des			OD (in)	Top (ftKB)		Btm (ftKB)
Proposed Other In Hole							
Des				OD (in)	Top (ftKB)		Btm (ftKB)
Cast Iron Bridge Plug				4.892	6,968.0		6,970.0
Logs							
Date	Type				Top, MD (ftKB)		Btm, MD (ftKB)
7/1/2008	COMPENSATED NEUTRON				637.0		7,472.0
7/1/2008	GAMMA RAY				637.0		7,472.0
7/1/2008	INDUCTION				637.0		7,472.0

Well Name: ANDERSEN 35-33

DEVIATED - ORIGINAL HOLE, 6/15/2018 11:37:33 AM



Logs						
Date	Type	Top, MD (ftKB)	Btm, MD (ftKB)			
7/30/2008	CBL/CCL/GR	2,600.0	7,440.0			
5/16/2018	GYRO	14.0	7,150.0			
Perforation Data						
Linked Zone	Sum of Entered Shot Total	Top (ftKB)	Btm (ftKB)	Date		
NIORARA, ORIGINAL HOLE	54	7,018.00	7,036.00	8/4/2008		
NIORARA, ORIGINAL HOLE	48	7,086.00	7,102.00	8/4/2008		
CODELL, ORIGINAL HOLE	60	7,296.00	7,316.00	8/1/2008		
Total (Sum)	162					
Job Supply Amounts						
Supply Item Des	Type	Uni...	Job Category	Total...	Total...	Total...