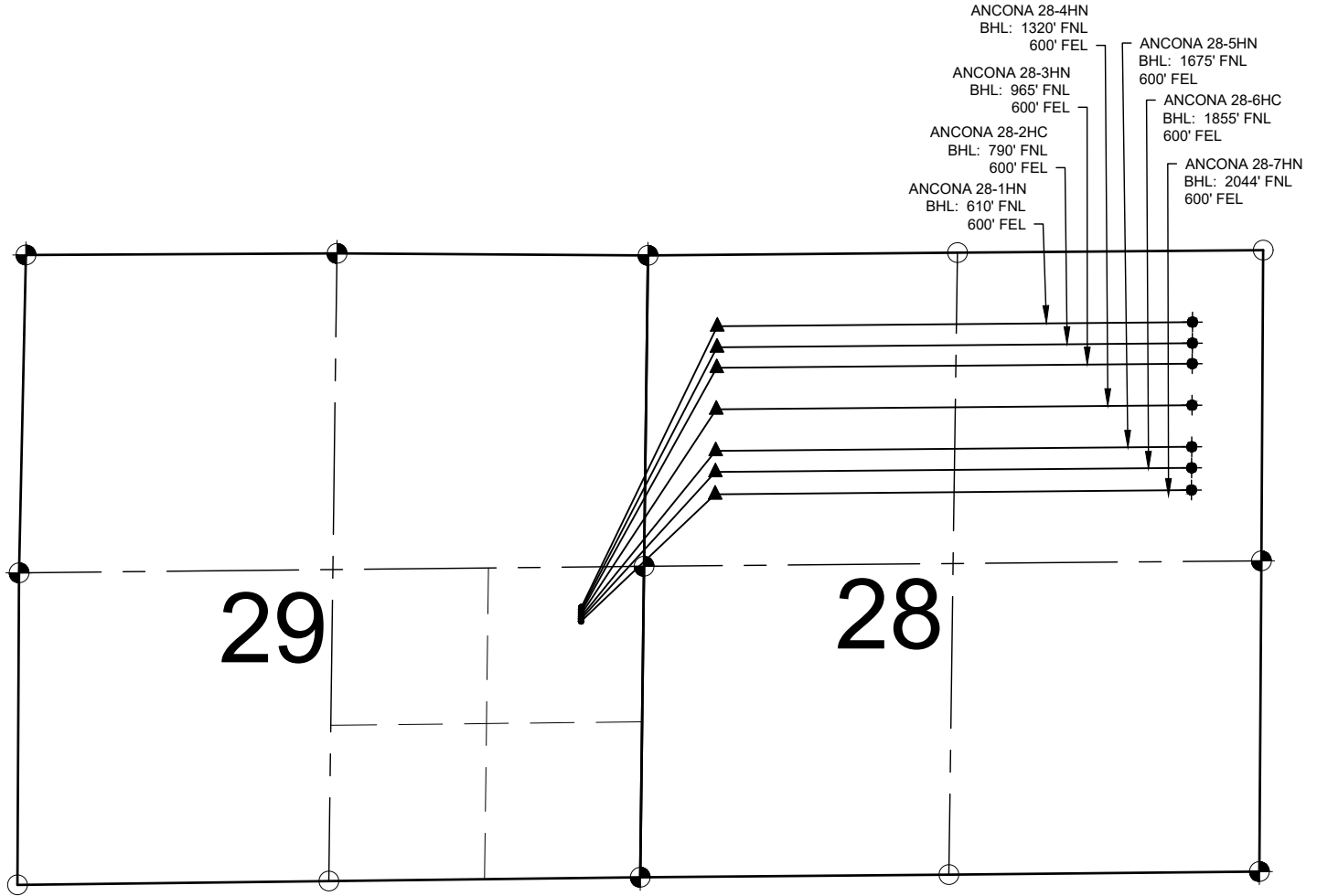


ANCONA PAD MULTI-WELL PLAN



LEGEND

- = EXISTING MONUMENT
- = CALCULATED POSITION
- = PROPOSED WELL
- ◆ = EXISTING WELL
- ▲ = BOTTOM HOLE
- ▲ = LANDING POINT
- BHL = BOTTOM HOLE LOCATION

NOTES:

- THIS FIELD SURVEY CONFORMS TO THE MINIMUM STANDARDS SET BY THE C.O.G.C.C., RULE NO. 215
- ALL DISTANCES AND BEARINGS SHOWN HEREON ARE GROUND VALUES AS GPS MEASURED IN THE FIELD, WITH TIES TO WELLS MEASURED PERPENDICULAR TO SECTION LINES. THIS LOW DISTORTION PROJECTION (LDP) IS BASED ON THE NORTH AMERICAN DATUM OF 1983, U.S. SURVEY FOOT WITH A LATITUDE ORIGIN OF 40.655085°N, A CENTRAL MERIDIAN LONGITUDE OF 104.086861°W, AND A SCALE FACTOR ON THE CENTRAL MERIDIAN OF 1.000232 (EXACT). THE LDP BASIS OF BEARINGS IS GEODETIC NORTH.
- FIELD VERIFICATION OF MONUMENTS COMPLETED WITHIN 1 YEAR OF SIGNATURE DATE.

NOTES:

- ANCONA 28-1HN TO BE AT 2313' FSL & 531' FEL.
BOTTOM HOLE AT 610' FNL & 600' FEL, SEC. 28.
- ANCONA 28-2HC TO BE AT 2293' FSL & 531' FEL.
BOTTOM HOLE AT 790' FNL & 600' FEL, SEC. 28.
- ANCONA 28-3HN TO BE AT 2273' FSL & 532' FEL.
BOTTOM HOLE AT 965' FNL & 600' FEL, SEC. 28.
- ANCONA 28-4HN TO BE AT 2253' FSL & 532' FEL.
BOTTOM HOLE AT 1320' FNL & 600' FEL, SEC. 28.
- ANCONA 28-5HN TO BE AT 2233' FSL & 532' FEL.
BOTTOM HOLE AT 1675' FNL & 600' FEL, SEC. 28.
- ANCONA 28-6HC TO BE AT 2213' FSL & 532' FEL.
BOTTOM HOLE AT 1855' FNL & 600' FEL, SEC. 28.
- ANCONA 28-7HN TO BE AT 2193' FSL & 532' FEL.
BOTTOM HOLE AT 2044' FNL & 600' FEL, SEC. 28.

