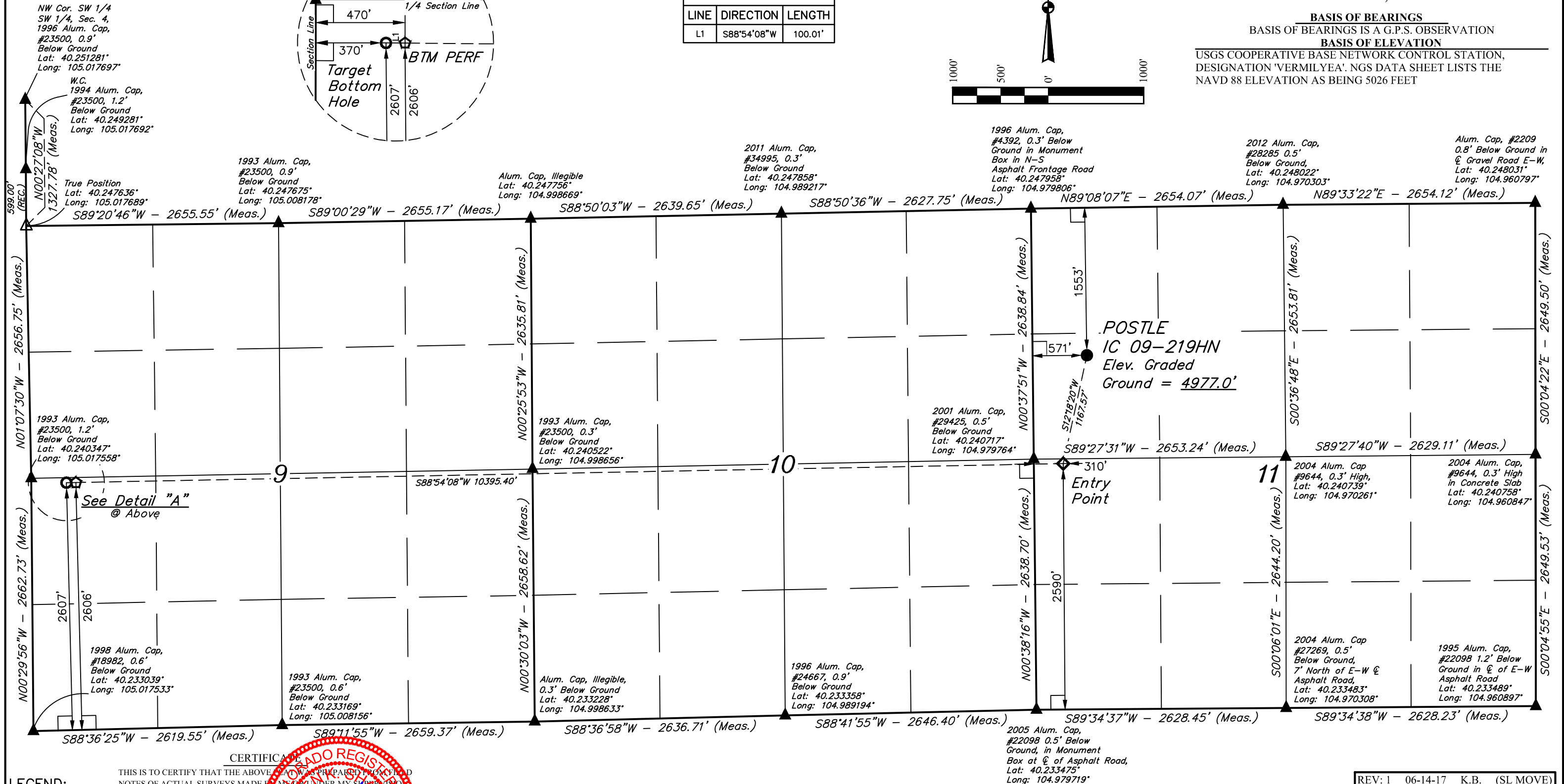
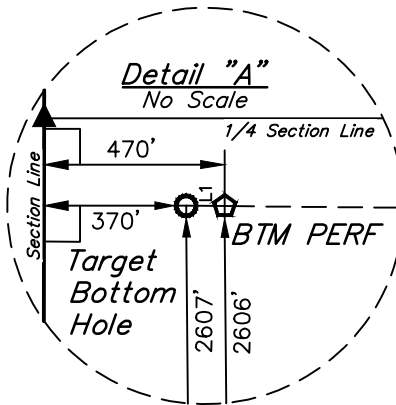









N

POSTLE IC 09-219HN
SW 1/4 NW 1/4, SECTION 11, T3N, R68W, 6th P.M.
WELD COUNTY, COLORADO

USGS COOPERATIVE BASE NETWORK CONTROL STATION,
DESIGNATION 'VERMILYEA'. NGS DATA SHEET LISTS THE
NAVD 88 ELEVATION AS BEING 5026 FEET

A graphic scale bar with alternating black and white segments. Above the bar, the markings '0'', '500'', and '1000'' are printed. To the right of the bar is a north arrow pointing towards the top right of the page.



 = 90° SYMBOL
 = PROPOSED WELLHEAD.
 = TARGET BOTTOM HOLE.
 = ENTRY POINT.
 = BTM PERF.
 = SECTION CORNERS LOCATED. (NAD 83)
 = SECTION CORNERS RE-ESTABLISHED.
 (Not Set on Ground.) (NAD 83)

CERTIFICATE

THE ABOVE MAP WAS PREPARED FROM FIELD SURVEYS MADE BY ME OR UNDER MY SUPERVISION AND IS TRUE AND CORRECT TO THE BEST OF MY KNOWLEDGE.

Robert J. Young

REGISTERED LAND SURVEYOR
REGISTRATION NO. 28285
STATE OF COLORADO

NAD 83 (SURFACE LOCATION)	NAD 83 (ENTRY POINT)	NAD 83 (BTM PERF)	NAD 83 (TARGET BOTTOM HOLE)
LATITUDE = 40°14'37.36" (0.243711)	LATITUDE = 40°14'26.10" (0.240583)	LATITUDE = 40°14'24.78" (0.240217)	LATITUDE = 40°14'24.76" (0.240211)
LONGITUDE = 104°58'39.85" (104.977736)	LONGITUDE = 104°58'43.15" (104.978653)	LONGITUDE = 105°00'57.15" (105.015875)	LONGITUDE = 105°00'58.44" (105.016233)
NAD 27 (SURFACE LOCATION)	NAD 27 (ENTRY POINT)	NAD 27 (BTM PERF)	NAD 27 (TARGET BOTTOM HOLE)
LATITUDE = 40°14'37.41" (0.243725)	LATITUDE = 40°14'26.16" (0.240600)	LATITUDE = 40°14'24.83" (0.240231)	LATITUDE = 40°14'24.82" (0.240228)
LONGITUDE = 104°58'37.93" (104.977203)	LONGITUDE = 104°58'41.23" (104.978119)	LONGITUDE = 105°00'55.22" (105.015339)	LONGITUDE = 105°00'56.51" (105.015697)

PDOP = 1.8

REV: 1 06-14-17 K.B. (SL MOVE)



UELS, LLC
Corporate Office * 85 South 200 East
Vernal, UT 84078 * (435) 789-1017

SURVEYED BY	CHAD MEIERS, D.N.	03-15-17	SCALE
DRAWN BY	K.B.	03-28-17	1" = 1000'

WELL LOCATION PLAT