



February 23, 2018

Colorado Oil and Gas Conservation Commission  
1120 Lincoln Street, Suite 801  
Denver, CO 80203

**RE: Proposed Wellbore Spacing Unit**  
Postle IC 09-182HC  
Codell New Drill  
SWNW Sec. 11, Township 3N, Range 68W, 6<sup>th</sup> P.M.  
Weld County, Colorado

Dear Director,

Great Western Operating Company, LLC (Great Western) is planning to drill the above captioned well in accordance with the provisions of Colorado Oil and Gas Conservation Commission (COGCC) Rule 318A.e.

Great Western's proposed wellbore spacing unit consists of:

Township 3N, Range 68W (Weld County):  
Section 11: W2W2  
Section 10: all  
Section 9: all

Total Acres: 1440ac

The 30 day notification time period has passed and we have not yet received any objections to such well locations or proposed spacing unit, therefore Great Western hereby requests the Director to approve the above mentioned well. Great Western respectfully requests the COGCC review the enclosed map illustrating the proposed wellbore spacing unit.

Respectfully,

*Natalie Svendsen*  
Regulatory Analyst  
Great Western Operating Company, LLC

T3N, R68W, 6th P.M.

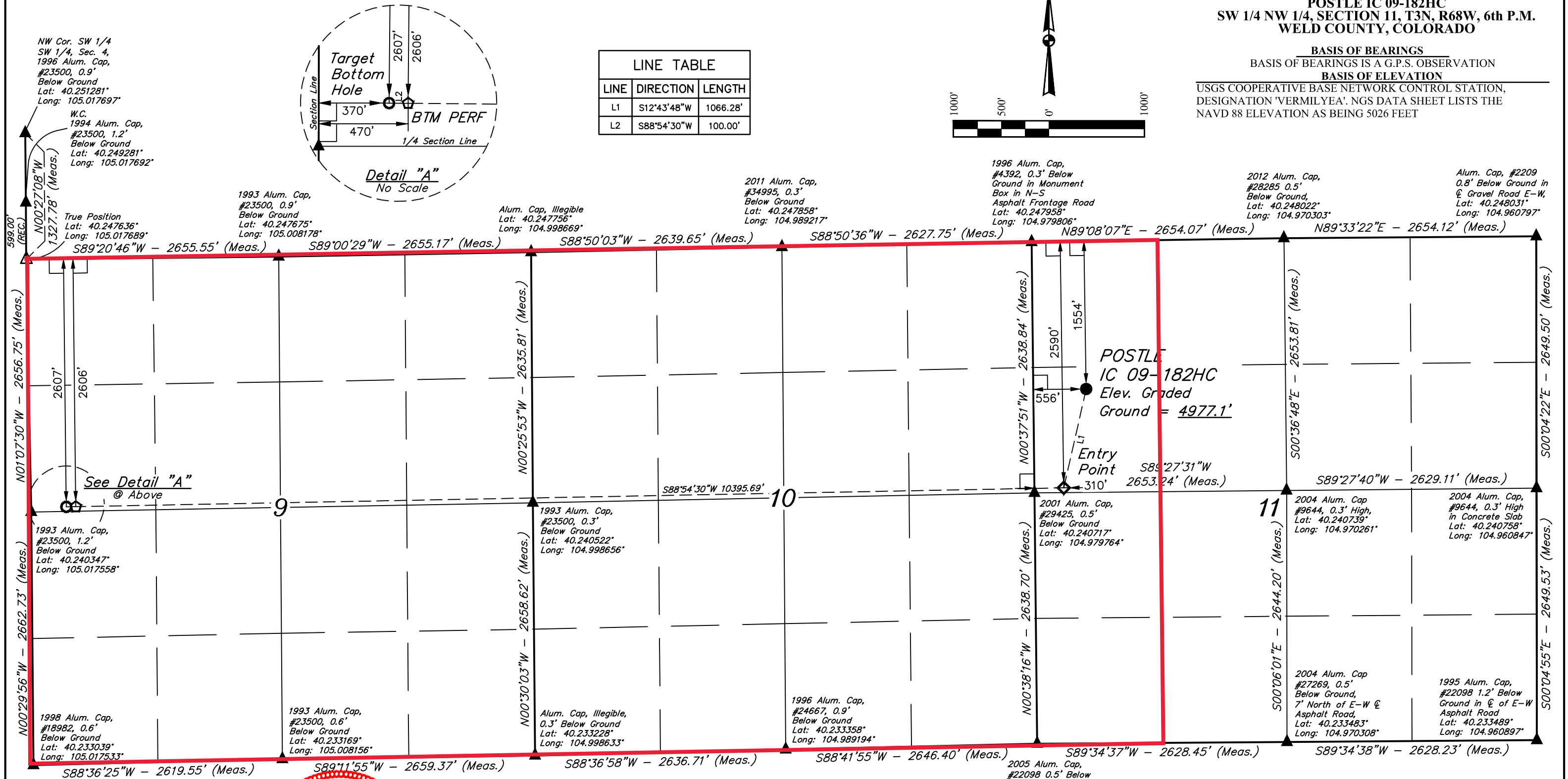
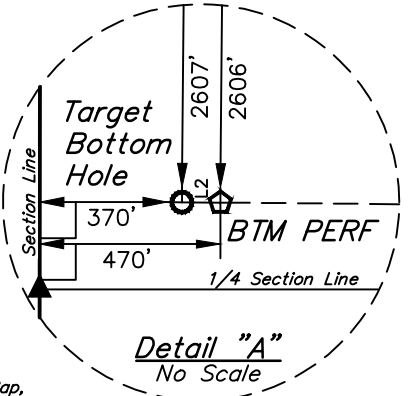
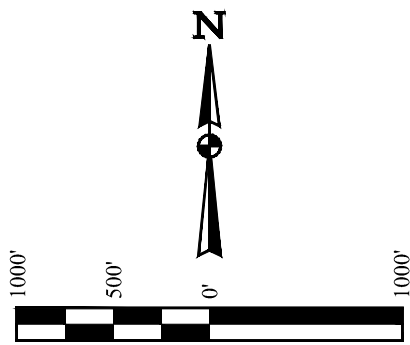
GREAT WESTERN OPERATING COMPANY

POSTLE IC 09-182HC  
SW 1/4 NW 1/4, SECTION 11, T3N, R68W, 6th P.M.  
WELD COUNTY, COLORADO

BASIS OF BEARINGS  
BASIS OF ELEVATION

USGS COOPERATIVE BASE NETWORK CONTROL STATION,  
DESIGNATION 'VERMILYEA'. NGS DATA SHEET LISTS THE  
NAVD 88 ELEVATION AS BEING 5026 FEET

LINE TABLE		
LINE	DIRECTION	LENGTH
L1	S12°43'48"W	1066.28'
L2	S88°54'30"W	100.00'



**LEGEND:**

- 90° SYMBOL
- PROPOSED WELLHEAD.
- TARGET BOTTOM HOLE.
- ENTRY POINT.
- BTM PERF.
- SECTION CORNERS LOCATED. (NAD 83)
- SECTION CORNERS RE-ESTABLISHED. (Not Set on Ground.) (NAD 83)

**CERTIFICATE**

THIS IS TO CERTIFY THAT THE ABOVE PLAT WAS PREPARED FROM FIELD NOTES OF ACTUAL SURVEYS MADE BY ME OR UNDER MY SUPERVISION, AND THAT THE SAME ARE TRUE AND CORRECT TO THE BEST OF MY KNOWLEDGE AND BELIEF.

REGISTERED LAND SURVEYOR  
REGISTRATION NO. 28285  
STATE OF COLORADO  
06-14-17

NAD 83 (SURFACE LOCATION)	NAD 83 (ENTRY POINT)	NAD 83 (BTM PERF)	NAD 83 (TARGET BOTTOM HOLE)
LATITUDE = 40°14'37.35" (40.243708)	LATITUDE = 40°14'27.09" (40.240858)	LATITUDE = 40°14'25.77" (40.240492)	LATITUDE = 40°14'25.76" (40.240489)
LONGITUDE = 104°58'40.04" (104.977789)	LONGITUDE = 104°58'43.15" (104.978653)	LONGITUDE = 105°00'57.16" (105.015878)	LONGITUDE = 105°00'58.45" (105.016236)
NAD 27 (SURFACE LOCATION)	NAD 27 (ENTRY POINT)	NAD 27 (BTM PERF)	NAD 27 (TARGET BOTTOM HOLE)
LATITUDE = 40°14'37.41" (40.243725)	LATITUDE = 40°14'27.15" (40.240875)	LATITUDE = 40°14'25.83" (40.240508)	LATITUDE = 40°14'25.82" (40.240506)
LONGITUDE = 104°58'38.12" (104.977256)	LONGITUDE = 104°58'41.23" (104.978119)	LONGITUDE = 105°00'55.23" (105.015342)	LONGITUDE = 105°00'56.52" (105.015700)

PDOP = 1.8

**UINTEAH**  
ENGINEERING & LAND SURVEYING

**WELL LOCATION PLAT**

SURVEYED BY	CHAD MEIERS, D.N.	03-15-17	SCALE
DRAWN BY	K.B.	03-28-17	1" = 1000'

UELS, LLC  
Corporate Office \* 85 South 200 East  
Vernal, UT 84078 \* (435) 789-1017

REV: 1 06-14-17 K.B. (SL MOVE)