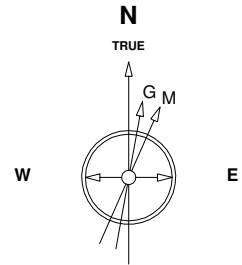


# Great Western Operating Company, LLC

Created by admin  
Date plotted 29-Jun-2017



<b>Location</b>	Colorado	<b>Slot</b>	C08 - Postle IC 09-182HC
<b>Field</b>	Wattenburg	<b>Well</b>	Postle IC 09-182HC
<b>Installation</b>	Postle West	<b>Wellbore</b>	Postle IC 09-182HC (PWB)

Plot reference is Postle IC 09-182HC (PWB).  
Ref wellpath is Postle IC 09-182HC (PWP#1).  
Coordinates are in Feet reference C08 - Postle IC 09-182HC.  
True Vertical Depths are reference Rig Datum.  
Measured Depths are reference Rig Datum.  
Rig Datum: Planned Datum #1  
Rig Datum to Mean Sea Level: 4996.90 ft.  
Plot North is aligned to TRUE North.

Scale 1 cm = 400 ft

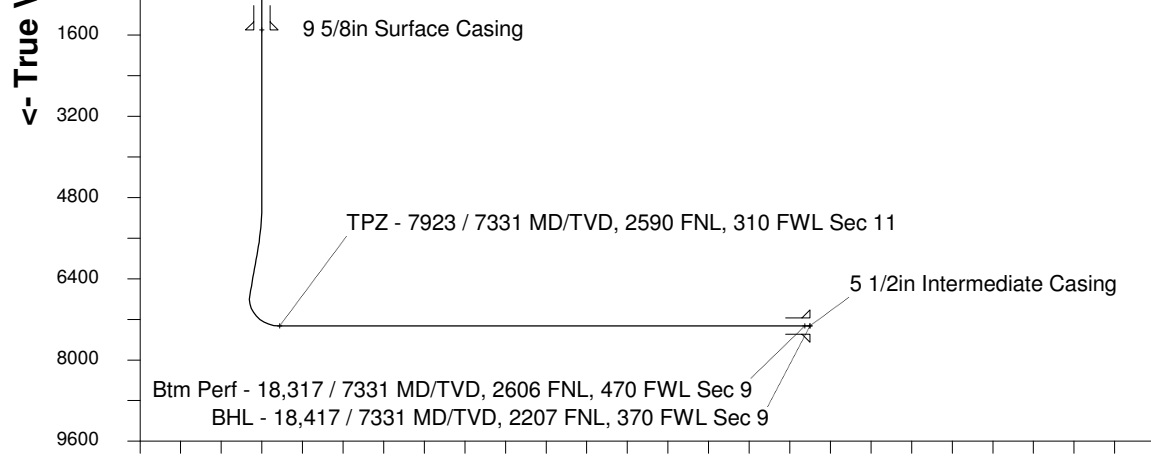
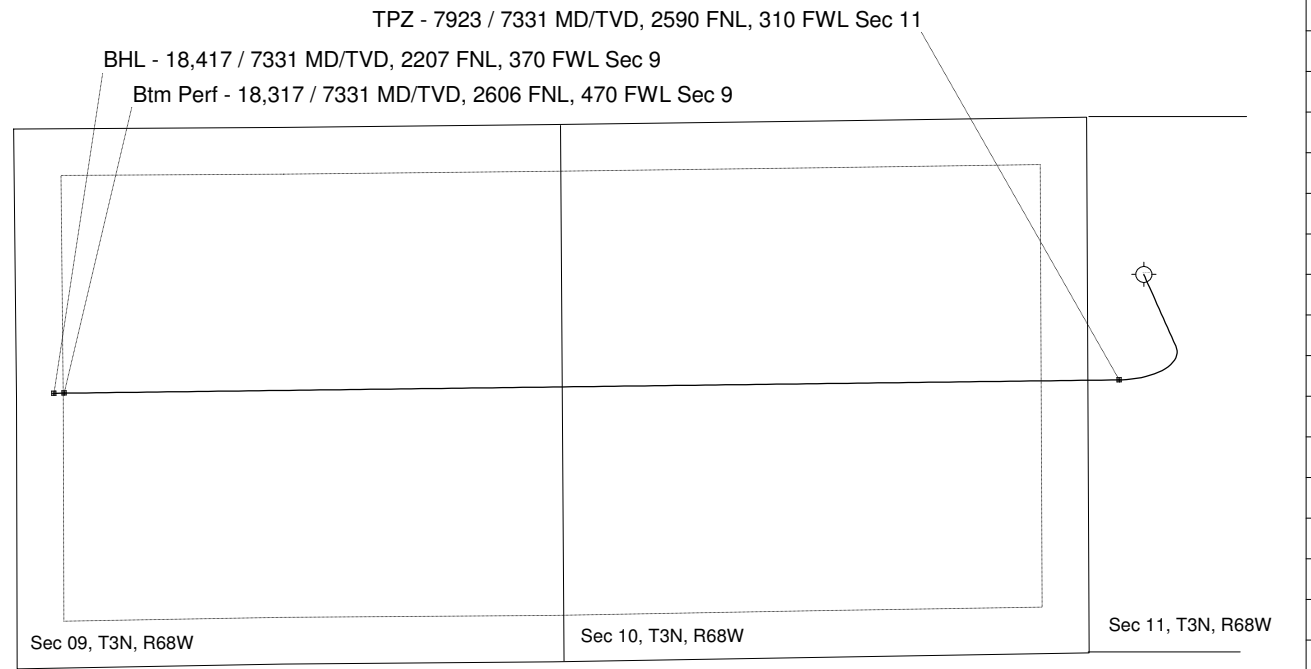
East (Feet) ->



7-Aug-2014  
IGRF Model [1900.0-2020.0] Dip: 66.77 deg Field: 52617.4 nT  
Lat: N40 14 38.2488 Long: W104 58 42.6288 Elev: 4976.90 ft  
Magnetic North is 8.62 deg East of TRUE North  
To correct azimuth from Magnetic to TRUE add 8.62 deg

Scale 1 cm = 800 ft  
True Vertical Depth (Feet)

Scale 1 cm = 400 ft  
North (Feet)



Scale 1 cm = 800 ft

Vertical Section (Feet) ->

Azimuth 263.78 with reference 0.00 N, 0.00 E from C08 - Postle IC 09-182HC

## WELL PROFILE DATA

Point	MD	Inc	Azi	TVD	North	East	deg/100ft	V. Sect
Tie on	0.00	0.00	0.00	0.00	S 0.00	W 0.00		-0.00
KOP	4867.00	0.00	155.98	4867.00	S 0.00	W 0.00	0.00	-0.00
End of Build	5866.93	30.00	155.98	5821.87	S 233.68	E 104.15	9.84	-78.21
End of Hold	6909.39	30.00	155.98	6724.69	S 709.73	E 316.33	0.00	-237.54
Target TPZ - ...Sec 11	7923.45	90.00	269.28	7331.00	S 1038.26	W 241.21	32.81	352.33
Target Btm Pe... Sec 9	18316.69	90.00	269.28	7331.00	S 1169.31	W 10633.62	0.00	10697.71
End of Turn	18317.62	90.00	269.40	7331.00	S 1169.32	W 10634.55	42.65	10698.64
T.D. & Target BHL...c 9	18416.64	90.00	269.40	7331.00	S 1170.36	W 10733.57	0.00	10797.13