



February 23, 2018

Colorado Oil and Gas Conservation Commission
1120 Lincoln Street, Suite 801
Denver, CO 80203

RE: Proposed Wellbore Spacing Unit
Postle IC 09-102HN
Niobrara New Drill
SWNW Sec. 11, Township 3N, Range 68W, 6th P.M.
Weld County, Colorado

Dear Director,

Great Western Operating Company, LLC (Great Western) is planning to drill the above captioned well in accordance with the provisions of Colorado Oil and Gas Conservation Commission (COGCC) Rule 318A.e.

Great Western's proposed wellbore spacing unit consists of:

Township 3N, Range 68W (Weld County):
Section 11: W2W2
Section 10: all
Section 9: all

Total Acres: 1440ac

The 30 day notification time period has passed and we have not yet received any objections to such well locations or proposed spacing unit, therefore Great Western hereby requests the Director to approve the above mentioned well. Great Western respectfully requests the COGCC review the enclosed map illustrating the proposed wellbore spacing unit.

Respectfully,

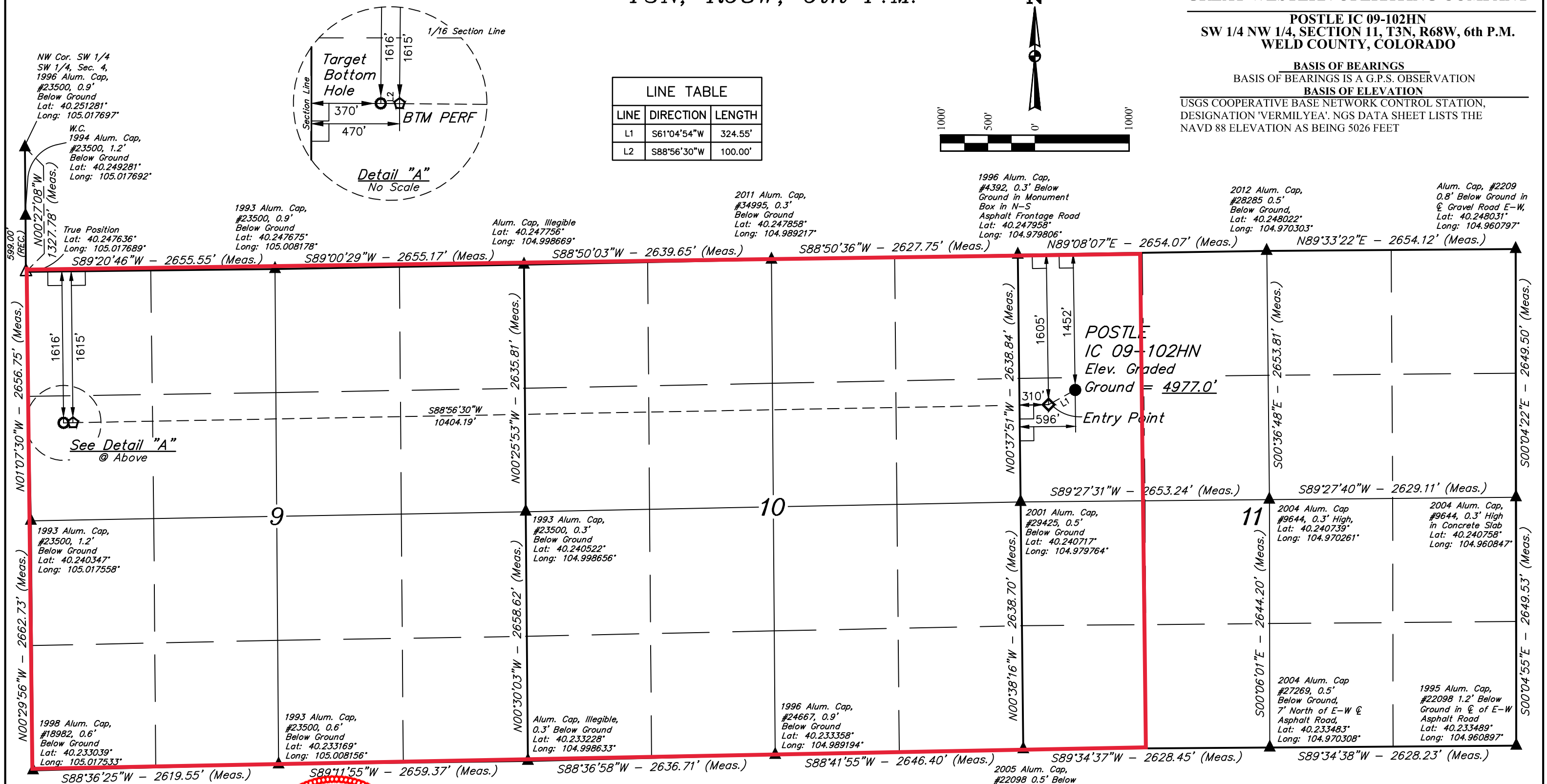
Natalie Svendsen
Regulatory Analyst
Great Western Operating Company, LLC

T3N, R68W, 6th P.M.

GREAT WESTERN OPERATING COMPANY

POSTLE IC 09-102HN
SW 1/4 NW 1/4, SECTION 11, T3N, R68W, 6th P.M.
WELD COUNTY, COLORADO

BASIS OF BEARINGS
BASIS OF ELEVATION
USGS COOPERATIVE BASE NETWORK CONTROL STATION,
DESIGNATION 'VERMILYEA'. NGS DATA SHEET LISTS THE
NAVD 88 ELEVATION AS BEING 5026 FEET



LEGEND:
= 90° SYMBOL
● = PROPOSED WELLHEAD.
○ = TARGET BOTTOM HOLE.
◇ = ENTRY POINT.
◇ = BTM PERF.
▲ = SECTION CORNERS LOCATED. (NAD 83)
△ = SECTION CORNERS RE-ESTABLISHED.
(Not Set on Ground.) (NAD 83)

CERTIFICATE
THIS IS TO CERTIFY THAT THE ABOVE PLAT WAS PREPARED FROM FIELD
NOTES OF ACTUAL SURVEYS MADE BY ME OR UNDER MY SUPERVISION
AND THAT THE SAME ARE TRUE AND CORRECT TO THE BEST OF MY
KNOWLEDGE AND BELIEF.

REGISTERED LAND SURVEYOR
REGISTRATION NO. 28285
STATE OF COLORADO
JAN 17 2017

NAD 83 (SURFACE LOCATION)	NAD 83 (ENTRY POINT)	NAD 83 (BTM PERF)	NAD 83 (TARGET BOTTOM HOLE)
LATITUDE = 40°14'38.35" (40.243986)	LATITUDE = 40°14'36.82" (40.243561)	LATITUDE = 40°14'35.56" (40.243211)	LATITUDE = 40°14'35.55" (40.243208)
LONGITUDE = 104°58'39.54" (104.977650)	LONGITUDE = 104°58'43.21" (104.978669)	LONGITUDE = 105°00'57.33" (105.015925)	LONGITUDE = 105°00'58.62" (105.016283)
NAD 27 (SURFACE LOCATION)	NAD 27 (ENTRY POINT)	NAD 27 (BTM PERF)	NAD 27 (TARGET BOTTOM HOLE)
LATITUDE = 40°14'38.41" (40.244003)	LATITUDE = 40°14'36.88" (40.243578)	LATITUDE = 40°14'35.62" (40.243228)	LATITUDE = 40°14'35.61" (40.243225)
LONGITUDE = 104°58'37.62" (104.977117)	LONGITUDE = 104°58'41.29" (104.978136)	LONGITUDE = 105°00'55.41" (105.015392)	LONGITUDE = 105°00'56.70" (105.015750)

UINTEAH
ENGINEERING & LAND SURVEYING

UELS, LLC
Corporate Office * 85 South 200 East
Vernal, UT 84078 * (435) 789-1017

SURVEYED BY	CHAD MEIERS, D.N.	03-15-17	SCALE
DRAWN BY	K.B.	03-28-17	1" = 1000'

WELL LOCATION PLAT

PDOP = 1.7