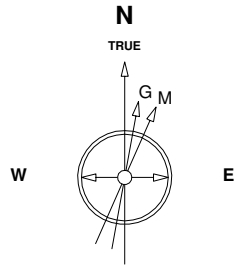


Great Western Operating Company, LLC

Location Colorado **Slot** N11 - Postle IC 09-022HC
Field Wattenburg **Well** Postle IC 09-022HC
Installation Postle West **Wellbore** Postle IC 09-022HC (PWB)

Created by admin
 Date plotted 29-Jun-2017
 Plot reference is Postle IC 09-022HC (PWB).
 Ref wellpath is Postle IC 09-022HC (PWP#1).
 Coordinates are in Feet reference N11 - Postle IC 09-022HC.
 True Vertical Depths are reference Rig Datum.
 Measured Depths are reference Rig Datum.
 Rig Datum: Planned Datum #1
 Rig Datum to Mean Sea Level: 4996.90 ft.
 Plot North is aligned to TRUE North.



Scale 1 cm = 400 ft

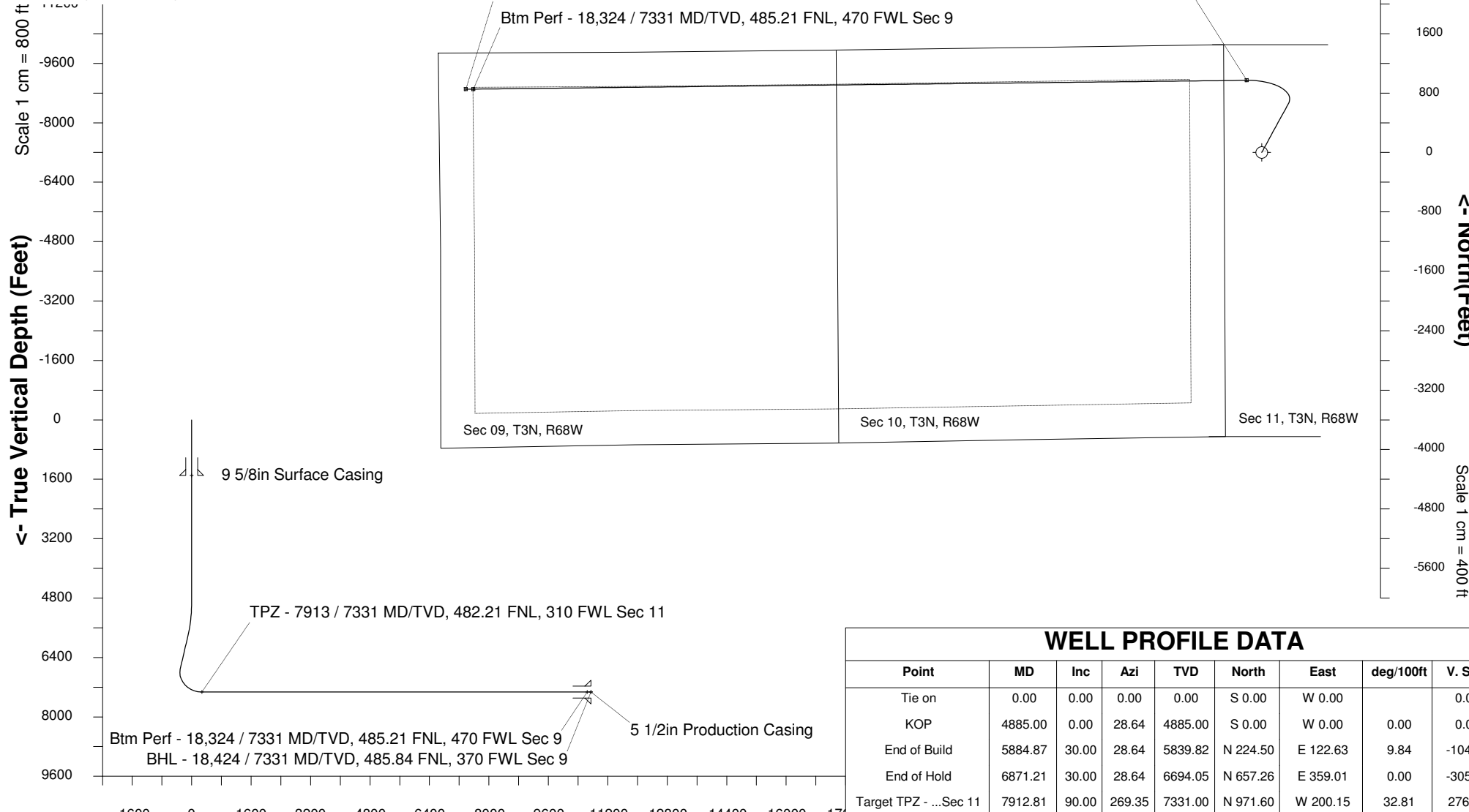
East (Feet) ->

-13600 -12800 -12000 -11200 -10400 -9600 -8800 -8000 -7200 -6400 -5600 -4800 -4000 -3200 -2400 -1600 -800 0 800 1600

7-Aug-2014
 IGRF Model [1900.0-2020.0] Dip: 66.77 deg Field: 52617.4 nT
 Lat: N40 14 38.2488 Long: W104 58 42.6288 Elev: 4976.90 ft
 Magnetic North is 8.62 deg East of TRUE North
 To correct azimuth from Magnetic to TRUE add 8.62 deg

Scale 1 cm = 800 ft

Scale 1 cm = 400 ft



WELL PROFILE DATA

Point	MD	Inc	Azi	TVD	North	East	deg/100ft	V. Sect
Tie on	0.00	0.00	0.00	0.00	S 0.00	W 0.00		0.00
KOP	4885.00	0.00	28.64	4885.00	S 0.00	W 0.00	0.00	0.00
End of Build	5884.87	30.00	28.64	5839.82	N 224.50	E 122.63	9.84	-104.43
End of Hold	6871.21	30.00	28.64	6694.05	N 657.26	E 359.01	0.00	-305.74
Target TPZ - ...Sec 11	7912.81	90.00	269.35	7331.00	N 971.60	W 200.15	32.81	276.59
Target Btm Pe... Sec 9	18323.70	90.00	269.35	7331.00	N 853.28	W 10610.38	0.00	10644.63
End of Turn	18324.08	90.00	269.40	7331.00	N 853.28	W 10610.76	42.65	10645.01
T.D. & Target BHL...c 9	18423.65	90.00	269.40	7331.00	N 852.23	W 10710.31	0.00	10744.17

Scale 1 cm = 800 ft
Vertical Section (Feet) ->
 Azimuth 274.55 with reference 0.00 N, 0.00 E from N11 - Postle IC 09-022HC