

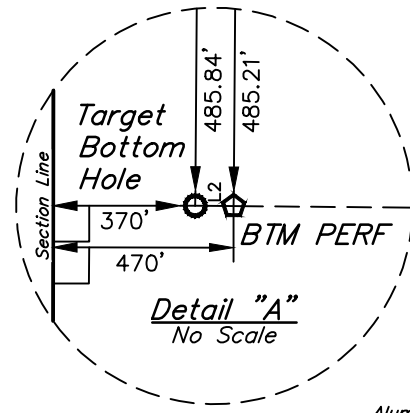
T3N, R68W, 6th P.M.

GREAT WESTERN OPERATING COMPANY

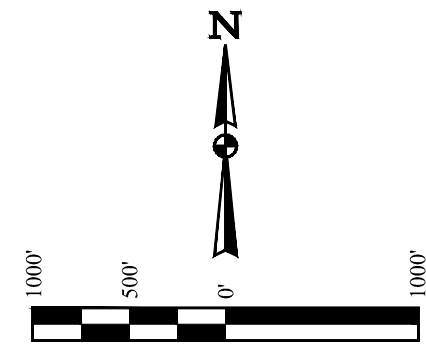
POSTLE IC 09-022HC
SW 1/4 NW 1/4, SECTION 11, T3N, R68W, 6th P.M.
WELD COUNTY, COLORADO

BASIS OF BEARINGS
BASIS OF ELEVATION

USGS COOPERATIVE BASE NETWORK CONTROL STATION,
DESIGNATION 'VERMILYEA'. NGS DATA SHEET LISTS THE
NAVD 88 ELEVATION AS BEING 5026 FEET



LINE TABLE		
LINE	DIRECTION	LENGTH
L1	N12°01'06"W	992.09'
L2	S88°58'50"W	100.00'



NW Cor. SW 1/4
SW 1/4, Sec. 4,
1996 Alum. Cap,
#23500, 0.9'
Below Ground
Lat: 40.251281°
Long: 105.017697°

W.C.
1994 Alum. Cap,
#23500, 1.2'
Below Ground
Lat: 40.249281°
Long: 105.017692°

True Position
Lat: 40.247636°
Long: 105.017689°

1993 Alum. Cap,
#23500, 0.9'
Below Ground
Lat: 40.247675°
Long: 105.008178°

1993 Alum. Cap,
#23500, 1.2'
Below Ground
Lat: 40.240347°
Long: 105.017558°

1998 Alum. Cap,
#18982, 0.6'
Below Ground
Lat: 40.233039°
Long: 105.017533°

1993 Alum. Cap,
#23500, 0.6'
Below Ground
Lat: 40.233169°
Long: 105.008156°

Alum. Cap, Illegible
Lat: 40.247756°
Long: 104.998669°

2011 Alum. Cap,
#34995, 0.3'
Below Ground
Lat: 40.247858°
Long: 104.989217°

1996 Alum. Cap,
#4392, 0.3' Below
Ground in Monument
Box in N-S
Asphalt Frontage Road
Lat: 40.247958°
Long: 104.979806°

2012 Alum. Cap,
#28285 0.5'
Below Ground,
Lat: 40.248022°
Long: 104.970303°

Alum. Cap, #2209
0.8' Below Ground in
Gravel Road E-W,
Lat: 40.248031°
Long: 104.960797°

1993 Alum. Cap,
#23500, 0.3'
Below Ground
Lat: 40.240522°
Long: 104.998656°

2001 Alum. Cap,
#29425, 0.5'
Below Ground
Lat: 40.240717°
Long: 104.979764°

2004 Alum. Cap,
#9644, 0.3' High,
Lat: 40.240739°
Long: 104.970261°

2004 Alum. Cap,
#27269, 0.5'
Below Ground,
7' North of E-W &
Asphalt Road,
Lat: 40.233483°
Long: 104.970308°

1995 Alum. Cap,
#22098 1.2' Below
Ground in & of E-W
Asphalt Road
Lat: 40.233489°
Long: 104.960897°

2005 Alum. Cap,
#22098 0.5' Below
Ground, in Monument
Box at & of Asphalt Road,
Lat: 40.233475°
Long: 104.979719°

POSTLE
IC 09-022HC
Elev. Graded
Ground = 4977.1'

CERTIFICATE

THIS IS TO CERTIFY THAT THE ABOVE PLAT WAS PREPARED FROM THE NOTES OF ACTUAL SURVEYS MADE BY ME OR UNDER MY SUPERVISION AND THAT THE SAME ARE TRUE AND CORRECT TO THE BEST OF MY KNOWLEDGE AND BELIEF.

REGISTERED LAND SURVEYOR
REGISTRATION NO. 28285
STATE OF COLORADO

CHAD MEIERS, D.N.

- LEGEND:**
- 90° SYMBOL
 - PROPOSED WELLHEAD.
 - TARGET BOTTOM HOLE.
 - ENTRY POINT.
 - BTM PERF.
 - SECTION CORNERS LOCATED. (NAD 83)
 - SECTION CORNERS RE-ESTABLISHED. (Not Set on Ground.) (NAD 83)

NAD 83 (SURFACE LOCATION)	NAD 83 (ENTRY POINT)	NAD 83 (BTM PERF)	NAD 83 (TARGET BOTTOM HOLE)
LATITUDE = 40°14'38.31" (40.243975)	LATITUDE = 40°14'47.91" (40.246642)	LATITUDE = 40°14'46.72" (40.246311)	LATITUDE = 40°14'46.71" (40.246308)
LONGITUDE = 104°58'40.70" (104.977972)	LONGITUDE = 104°58'43.28" (104.978689)	LONGITUDE = 105°00'57.53" (105.015981)	LONGITUDE = 105°00'58.82" (105.016339)
NAD 27 (SURFACE LOCATION)	NAD 27 (ENTRY POINT)	NAD 27 (BTM PERF)	NAD 27 (TARGET BOTTOM HOLE)
LATITUDE = 40°14'38.37" (40.243992)	LATITUDE = 40°14'47.97" (40.246658)	LATITUDE = 40°14'46.78" (40.246328)	LATITUDE = 40°14'46.77" (40.246325)
LONGITUDE = 104°58'38.78" (104.977439)	LONGITUDE = 104°58'41.36" (104.978156)	LONGITUDE = 105°00'55.60" (105.015444)	LONGITUDE = 105°00'56.89" (105.015803)

PDOP = 1.6

UINTAH
ENGINEERING & LAND SURVEYING

UELS, LLC
Corporate Office * 85 South 200 East
Vernal, UT 84078 * (435) 789-1017

SURVEYED BY	CHAD MEIERS, D.N.	03-15-17	SCALE
DRAWN BY	K.B.	03-28-17	1" = 1000'

WELL LOCATION PLAT