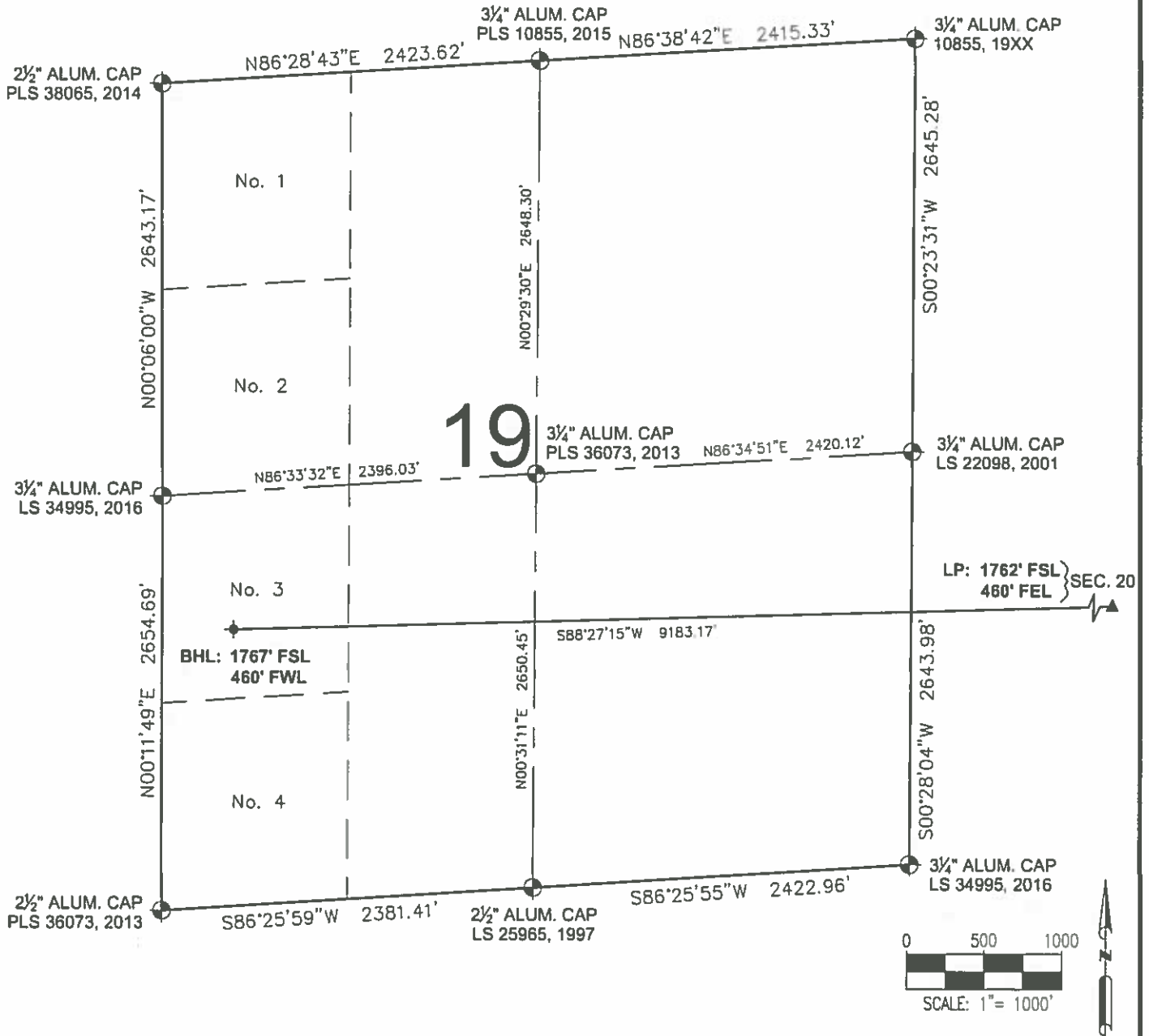


WELL LOCATION EXHIBIT



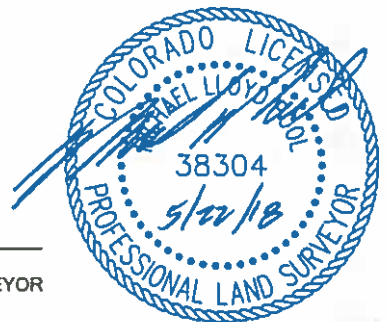
VIC 20W-20-9N WELL LOCATION EXHIBIT



LEGEND

- ⊕ = EXISTING MONUMENT
- = CALCULATED POSITION
- = PROPOSED WELL
- ◆ = EXISTING WELL
- ⬤ = BOTTOM HOLE
- ▲ = LANDING POINT
- LP = LANDING POINT
- BHL = BOTTOM HOLE LOCATION

MICHAEL L. POOL, PLS 38304
COLORADO LICENSED PROFESSIONAL LAND SURVEYOR
FOR AND ON BEHALF OF P.F.S., LLC
d.b.a. ASCENT GEOMATICS SOLUTIONS



SHEET 2 OF 2



FIELD DATE
05-17-18
DRAWING DATE
05-18-18
BY
VQD

CHECKED
CLP

WELL NAME
VIC 20W-20-9N
SURFACE LOCATION
SE 1/4 NE 1/4 SEC. 20, T7N, R67W, 6TH P.M.
WELD COUNTY, COLORADO

PREPARED FOR

