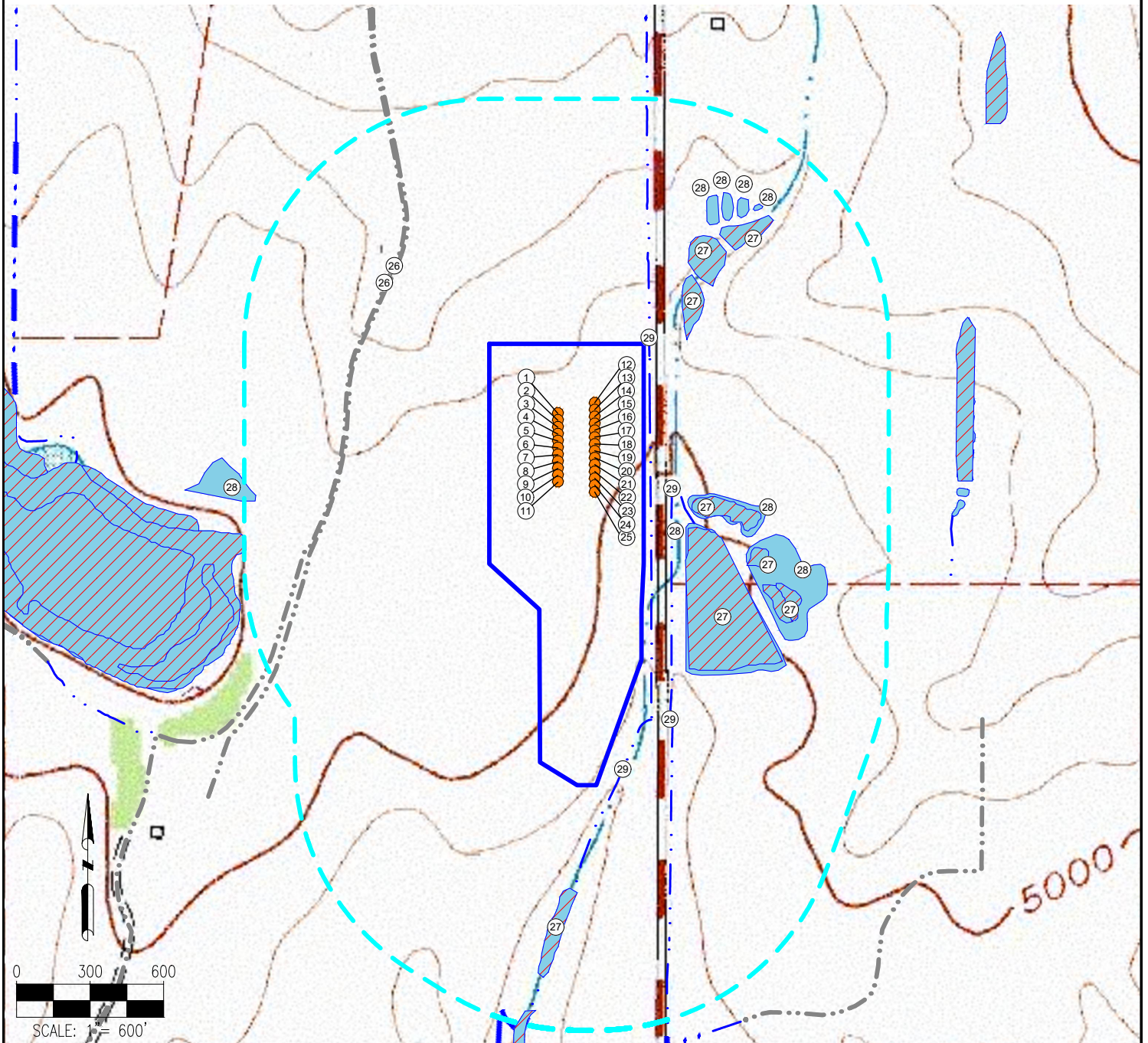


VIC 20-E PAD HYDROLOGY MAP



MEASUREMENTS ARE MADE FROM THE NEAREST EDGE OF THE DISTURBANCE AREA.

- | | | |
|--------------------|--------------------|---|
| 1. VIC 21E-20-2N | 13. VIC 20W-20-3N | 25. VIC 29W-20-2N |
| 2. VIC 21E-20-3N | 14. VIC 20W-20-4C | 26. CONCRETE DITCHES ARE 478' NW, 502' NW |
| 3. VIC 21E-20-4C | 15. VIC 20W-20-5N | 27. WETLANDS ARE ±335' NE, ±519' NE, ±117' E, ±173' E, ±197' E, ±421' E, ±494' E, ±421' S |
| 4. VIC 21E-20-5N | 16. VIC 20W-20-6N | 28. PONDS ARE ±533' NE, ±584' NE, ±629' NE, ±689' NE, ±180' E, ±173' E, ±419' E, ±953' W |
| 5. VIC 21E-20-6N | 17. VIC 20W-20-7C | 29. DITCHES ARE ±22' E, ±115' E, ±79' SE, ±191' SE |
| 6. VIC 21E-20-7C | 18. VIC 20W-20-8N | |
| 7. VIC 21E-20-8N | 19. VIC 20W-20-9N | |
| 8. VIC 21E-20-9N | 20. VIC 20W-20-10C | |
| 9. VIC 21E-20-10C | 21. VIC 20W-20-11N | |
| 10. VIC 21E-20-11N | 22. VIC 20W-20-12N | |
| 11. VIC 21E-20-12N | 23. VIC 20W-20-13C | |
| 12. VIC 20W-20-2N | 24. VIC 29W-20-1N | |

LEGEND:

● = PROPOSED WELL

--- = DITCH

--- = CONCRETE DITCH

■ = POND

■ = WETLANDS

■ = DISTURBANCE AREA

--- = 1000' RADIUS

DISCLAIMER:
THIS PLOT DOES NOT REPRESENT A MONUMENTED LAND SURVEY AND SHOULD NOT BE RELIED UPON TO DETERMINE BOUNDARY LINES, PROPERTY OWNERSHIP OR OTHER PROPERTY INTERESTS. PARCEL LINES, IF DEPICTED HAVE NOT BEEN FIELD VERIFIED AND MAY BE BASED UPON PUBLICLY AVAILABLE DATA THAT ALSO HAS NOT BEEN INDEPENDENTLY VERIFIED.

DATA SOURCE:
TOPO MAP: USGS
NHD: USGS

PUBLICLY AVAILABLE DATA SOURCES HAVE NOT BEEN INDEPENDENTLY VERIFIED BY ASCENT.

FIELD DATE:
05-17-18

DRAWING DATE:
05-18-18

BY:
MJH

CHECKED:
RMC

SITE NAME:
VIC 20-E PAD

SURFACE LOCATION:

SE 1/4 NE 1/4 SEC. 20, T7N, R67W, 6TH P.M.
WELD COUNTY, COLORADO

PREPARED FOR: