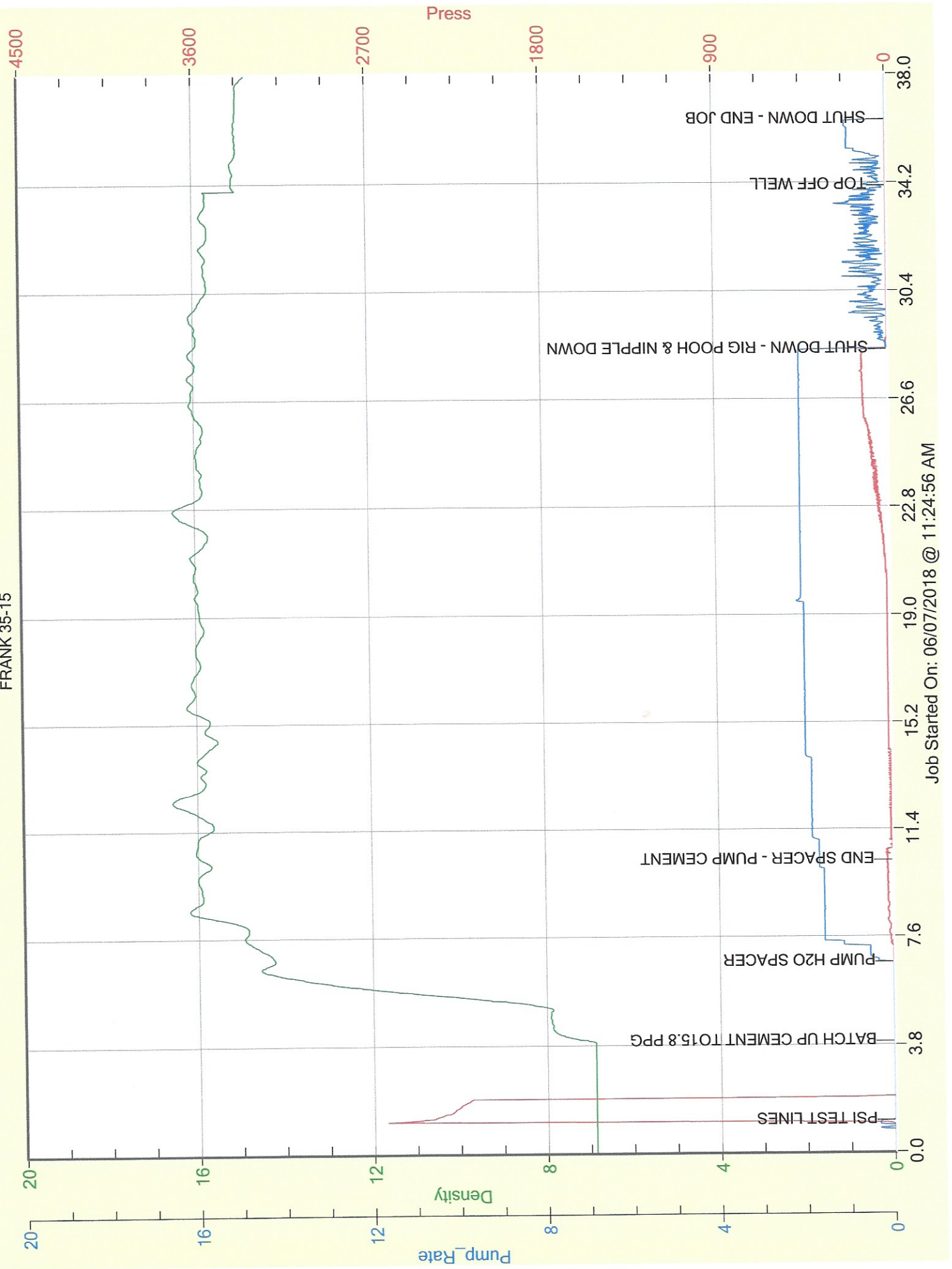


CUSTOMER OR HIS AGENT SIGNATURE

MALLARD EXPLORATION
FRANK 35-15





Service Order #: 75350C

Date: 07-Jun-18

Well Name	Location	County	St	API#		
FRANK 35-15		WELD	CO	05-123-20170		
Formation	Cement Via	Type Of Service	Well Type	Age	AFE#	PO#
	TUBING	PLUG	GAS	REWORK		

Customer: MALLARD EXPLORATION

Remarks:

CEMENT PLUG

Cement Pumped: 37.5 bbls / 183 sks
Length: 560 - 0

Customer Rep: JASON EISENACH

PH:

WELLBORE DATA

Type	Size	Weight	Depth	Volume
Surface Casing:	8.625	24.0	450.0	
Production Casing:				
Intermediate:				
Drill Pipe:				
Tubing:	2.875	6.5	560.0	

OTHER DATA

BHT	Max PSI	Total Depth
	500	560.0

Packer or RetainerType / Depth:

--	--

Perf Depths: # Total

Type	Size	Depth (Top)	Depth (Bot)	Volume
Liner:				
Open Hole:	8.000	450.0	560.0	

TIME	PUMP RATES		DENSITY	PRESS	STG TOT	TOTAL	REMARKS
	WATER (gpm)	PUMP (bpm)	(lb/gal)	(psi)	(bbls)	(bbls)	
11:26	0	0.1	6.88	2,631		0.1	PSI TEST LINES
11:28	0	0.0	6.90	0		0.1	BATCH UP CEMENT TO15.8 PPG
11:31	44	0.0	14.32	0		0.0	PUMP H2O SPACER
11:35	0	1.7	15.75	27		5.0	END SPACER - PUMP CEMENT
11:53	0	1.8	16.08	63		36.1	SHUT DOWN - RIG POOH & NIPPLE DOWN
12:41	0	0.2	15.07	0		0.0	TOP OFF WELL
12:43	0	0.1	15.00	0		1.4	SHUT DOWN - END JOB

Summary

Max Fl. Rate Avg Fl. Rate Max Psi Avg Psi
1.8 1.2 2,631 30

Customer Acknowledgement:

Service Rating:

- ☐ Satisfactory
☐ Unsatisfactory

Cementer:

CORY THAUT

PRODUCTS USED

*Cement Plug: Class G (neat)
-Density: 15.8 ppg / Yield: 1.15