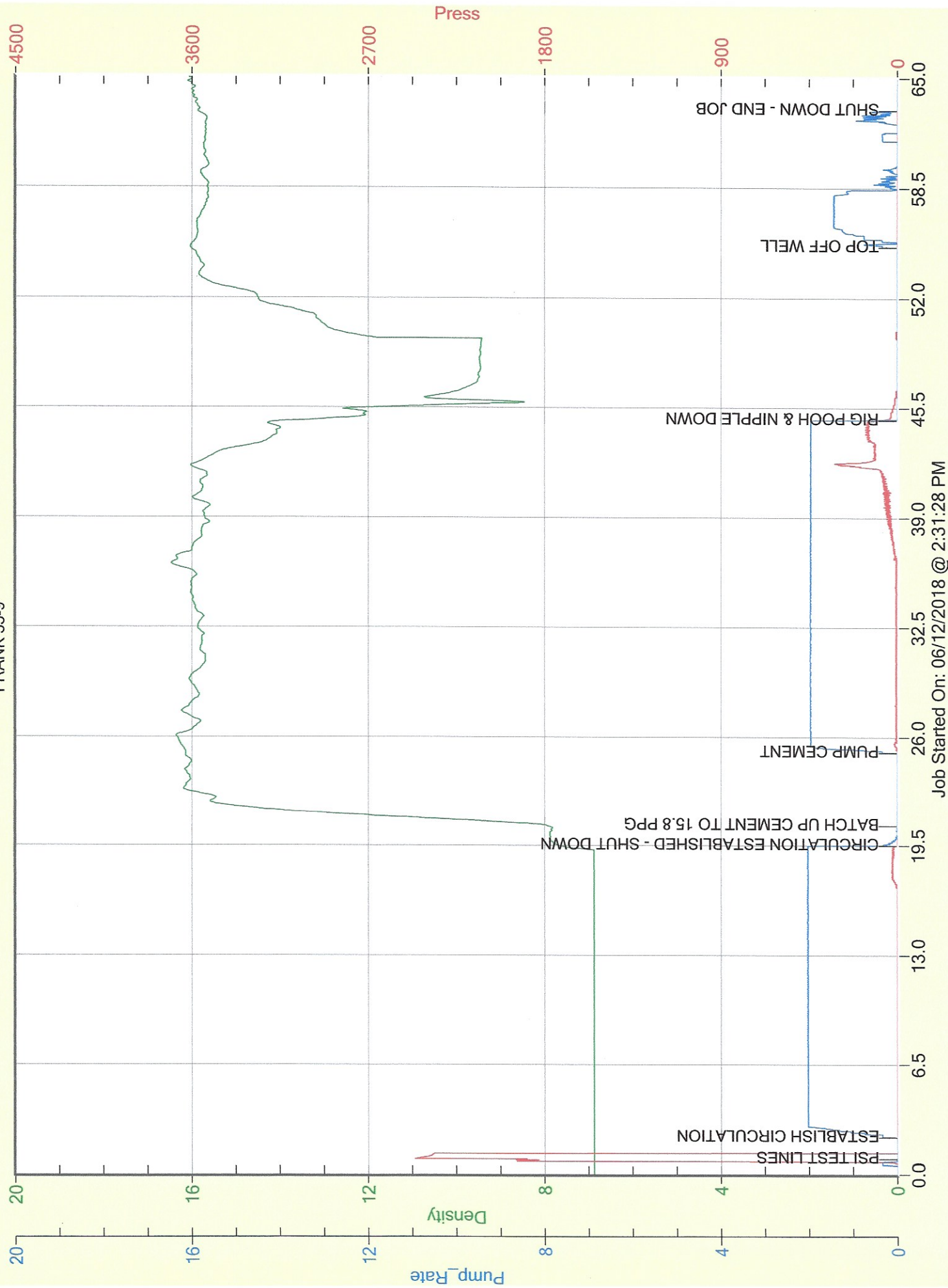


CUSTOMER OR HIS AGENT SIGNATURE

MALLARD EXPLORATION

FRANK 35-9





Service Order #: 75354C

Date: 12-Jun-18

Well Name	Location	County	St	API#		
FRANK 35-9		WELD	CO	05-123-21377		
Formation	Cement Via	Type Of Service	Well Type	Age	AFE#	PO#
	TUBING	PLUG	GAS	REWORK		

Customer: MALLARD EXPLORATION

Remarks: *SURFACE SHOE PLUG*

Cement: 43.7 bbls / 214 sks
Length: 510 - 0

Customer Rep: JASON EISENACH PH:

WELLBORE DATA				
Type	Size	Weight	Depth	Volume
Surface Casing:	8.625	24.0	440.0	
Production Casing:				
Intermediate:				
Drill Pipe:				
Tubing:	2.375	4.7	510.0	

OTHER DATA		
BHT	Max PSI	Total Depth
	500	510.0

Packer or RetainerType / Depth:

Type	Size	Depth (Top)	Depth (Bot)	Volume
Liner:				
Open Hole:	8.000	440.0	510.0	

Perf Depths:	#	Total

TIME	PUMP RATES		DENSITY (lb/gl)	PRESS (psi)	STG TOT (bbls)	TOTAL (bbls)	REMARKS
	WATER (gpm)	PUMP (bpm)					
14:32	0	0.0	6.88	2,464		0.1	PSI TEST LINES
14:33	0	0.0	6.88	0		0.0	ESTABLISH CIRCULATION
14:51	0	1.8	7.67	2		35.0	CIRCULATION ESTABLISHED - SHUT DOWN
14:52	0	0.0	7.95	0		0.0	BATCH UP CEMENT TO 15.8 PPG
14:56	0	0.1	16.14	0		0.0	PUMP CEMENT
15:16	0	1.9	13.15	131		39.0	RIG POOH & NIPPLE DOWN
16:06	0	0.0	16.03	0		0.0	TOP OFF WELL
16:14	0	0.0	15.83	0		4.7	SHUT DOWN - END JOB
16:16	2	0.0	15.76	0		4.7	Paused 16:16:27

Summary

Max Fl. Rate	Avg Fl. Rate	Max Psi	Avg Psi
1.9	0.9	2,464	19

Customer Acknowledgement:

Service Rating:

- ☐ Satisfactory
☐ Unsatisfactory

Cementer:

CORY THAUT

PRODUCTS USED

*Cement: Class G (neat)
Density: 15.8 ppg / Yield: 1.15