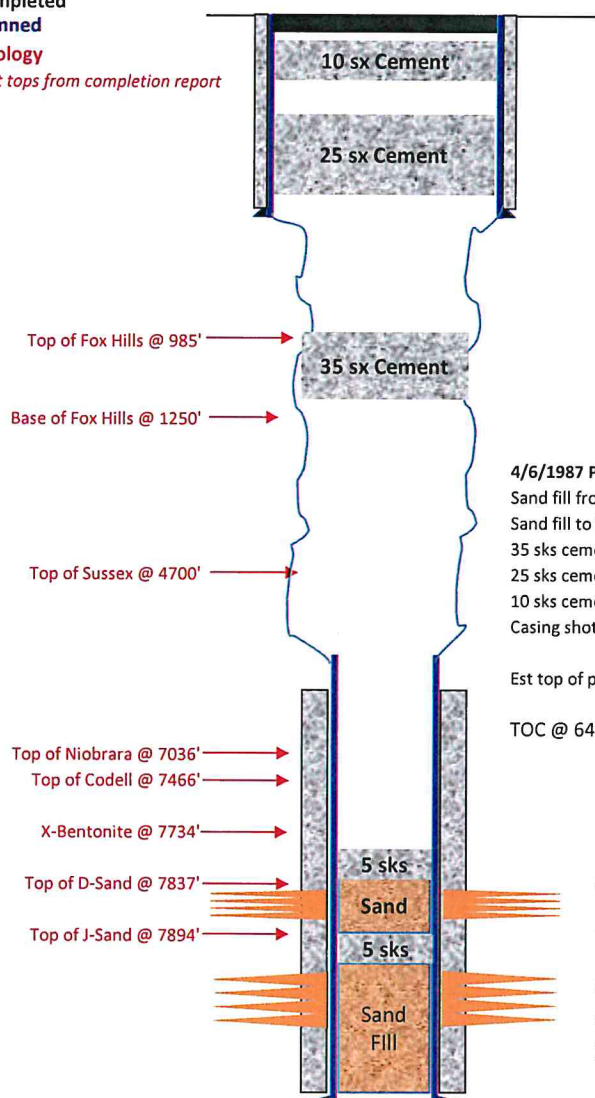


Berge Exploration, Inc
Penrod 4-3 - P&A Re-Entry
EXISTING WELLBORE DIAGRAM

Completed
Planned

Geology

**Est tops from completion report*



Original PBTD: 7949'
TD: 8004'

Elevation: 5074' GR, 5084' KB
Location: 990' FNL, 990' FWL
NWNW Sec 4, T1S, R65W
Adams County, CO
Field: Wattenberg
Zone: "D" Sand & "J" Sand
Spud Date: 3/20/1986
API: 05-001-08766

Surface Casing:
9-5/8" 32.5#, Set @ 217' in 13-3/4" OH
Cement w/ 180 sx

4/6/1987 P&A:
Sand fill from 7949' - 7905', 5 sks cement on sand
Sand fill to 7820', 5 sks on sand (*Est TOC @ 7755'*)
35 sks cement @ 1100' (*Est Top @ 981'*)
25 sks cement @ 210' (*Est Top @ 84'*)
10 sks cement @ 40' (*Est Top @ 15'*)
Casing shot and pulled from 6340'

Est top of production casing during P&A @ ~6340'

TOC @ 6450', CBL 4/6/1986

6/1986 - Perf:
D Sand, 7839' - 7847', 2 SPF (17 Holes)
Treatment: 18 BBL 7.5% ACID; 3,000 GAL 2% KCL; FRAC FAILED

6/1986 - Perf:
J Sand: 7907' - 7914', 1 SPF (8 HOLES)
J Sand: 7917' - 7926', 1 SPF (10 HOLES)
Treatment: 206,000# 20/40 SAND W/72,000 GAL MY-T-GEL 1400

Production Casing:
4-1/2" 11.6#, Set @ +/- 7996' in 7-7/8" OH
Cement w/ 250 sx

Berge Exploration, Inc
Penrod 4-3 - P&A Re-Entry
PLANNED WELLBORE DIAGRAM

**Completed
Planned**

Geology

**Est tops from completion report*

Set 114 sx plug in over surface shoe
to surface (267' - 0')

Top of Fox Hills @ 985'

Base of Fox Hills @ 1250'

Top of Sussex @ 4700'

Top of Niobrara @ 7036'

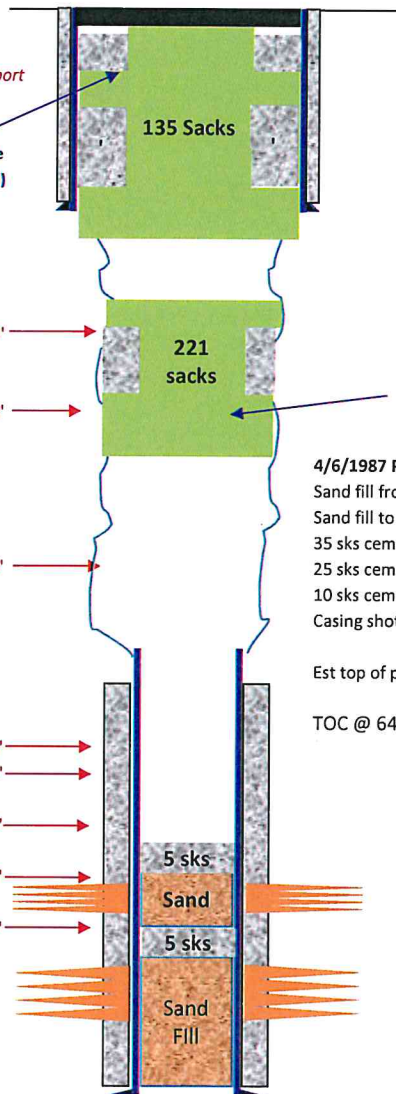
Top of Codell @ 7466'

X-Bentonite @ 7734'

Top of D-Sand @ 7837'

Top of J-Sand @ 7894'

Original PBTD: 7949'
TD: 8004'



Elevation: 5074' GR, 5084' KB
Location: 990' FNL, 990' FWL
NWNW Sec 4, T1S, R65W
Adams County, CO
Field: Wattenberg
Zone: "D" Sand & "J" Sand
Spud Date: 3/20/1986
API: 05-001-08766

Surface Casing:
9-5/8" 32.5#, Set @ 217' in 13-3/4" OH
Cement w/ 180 sx

Set 221 sx plug over Fox Hills
from ~ 1,500' to 900'

4/6/1987 P&A:

Sand fill from 7949' - 7905', 5 sks cement on sand
Sand fill to 7820', 5 sks on sand (Est TOC @ 7755')
35 sks cement @ 1100' (Est Top @ 981')
25 sks cement @ 210' (Est Top @ 84')
10 sks cement @ 40' (Est Top @ 15')
Casing shot and pulled from 6340'

Est top of production casing during P&A @ ~6340'

TOC @ 6450', CBL 4/6/1986

6/1986 - Perf:

D Sand, 7839' - 7847', 2 SPF (17 Holes)
Treatment: 18 BBL 7.5% ACID; 3,000 GAL 2% KCL; FRAC FAILED

6/1986 - Perf:

J Sand: 7907' - 7914', 1 SPF (8 HOLES)
J Sand: 7917' - 7926', 1 SPF (10 HOLES)
Treatment: 206,000# 20/40 SAND W/72,000 GAL MY-T-GEL 1400

Production Casing:

4-1/2" 11.6#, Set @ +/- 7996' in 7-7/8" OH
Cement w/ 250 sx