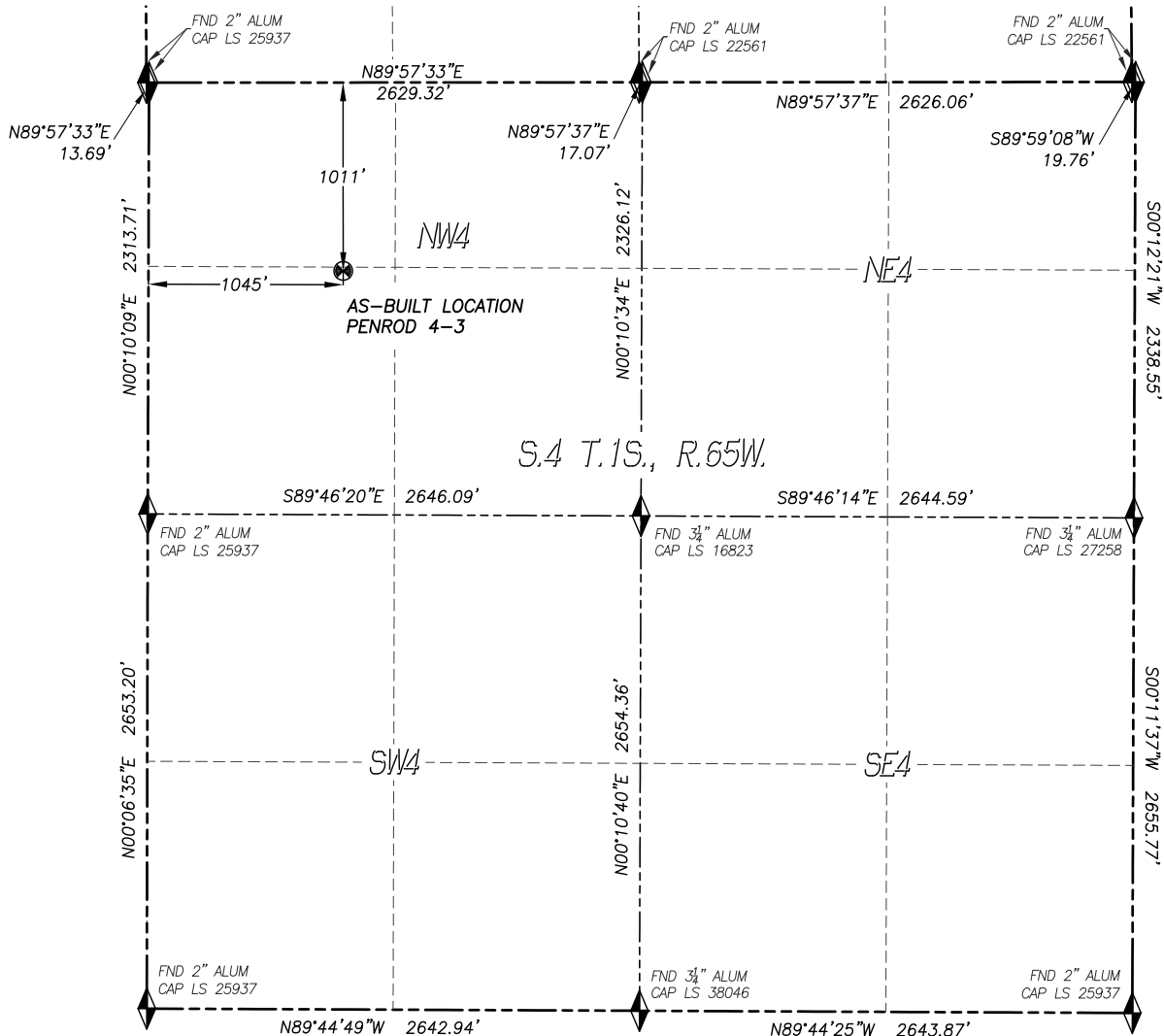


WELL AS-BUILT SURVEY PENROD 4-3

SECTION 4, TOWNSHIP 1 SOUTH, RANGE 65 WEST OF THE 6TH P.M.

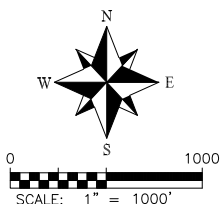


IN ACCORDANCE WITH A REQUEST FROM CONFLUENCE RESOURCES., DALEY LAND SURVEYING, INC. HAS DETERMINED THE SURFACE LOCATION OF THE PENROD 4-3 WELL TO BE 1011' FNL, 1045' FWL, AS MEASURED AT NINETY (90) DEGREES FROM THE SECTION LINES OF SECTION 4, TOWNSHIP 1 SOUTH, RANGE 65 WEST, OF THE 6TH PRINCIPAL MERIDIAN, ADAMS COUNTY, COLORADO.

I HEREBY STATE THAT THIS WELL AS-BUILT SURVEY WAS PREPARED BY ME OR UNDER MY DIRECT SUPERVISION, THAT THE WORK WAS COMPLETED ON 6/7/2018 FOR AND ON BEHALF OF CONFLUENCE RESOURCES., AND THAT THIS MAP DOES NOT REPRESENT A BOUNDARY SURVEY, IT IS NOT A LAND SURVEY PLAT OR AN IMPROVEMENT SURVEY PLAT AND IT IS NOT TO BE RELIED UPON FOR THE ESTABLISHMENT OF FENCE, BUILDING OR OTHER FUTURE IMPROVEMENT LINES.

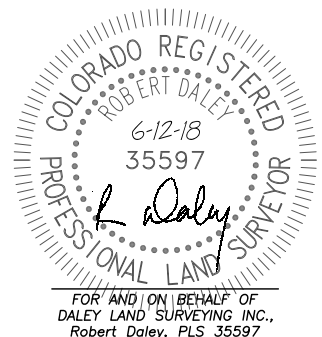
NOTES:

- 1) BEARINGS FOR THIS MAP ARE ASSUMED AND BASED UPON GPS OBSERVATIONS MADE BETWEEN MONUMENTS LOCATED AT THE WEST QUARTER CORNER AND NORTHWEST CORNER OF SECTION 4, T.1S., R.65W.
- 2) HORIZONTAL DATUM IS NAD83.
- 3) VERTICAL DATUM IS NAVD88 AND ORIGINATES FROM THE LOCAL C.O.R.S. NETWORK, UTILIZING THE GEOID12A MODEL.
- 4) SURFACE USE: RANGELAND.
- 5) INST. OPERATOR: KYLE DALEY.
- 6) WELL WAS EXCAVATED AND THE TOP OF THE WELL HEAD WAS LOCATED.



NAD 83 LATITUDE AND LONGITUDE

SURFACE LOCATION:
 LATITUDE: N39.99776°
 LONGITUDE: W104.67463°
 ELEV: 5076'
 PDOP: 1.2
 QTR/QTR: SW4/NW4



FOR AND ON BEHALF OF
 DALEY LAND SURVEYING, INC.,
 Robert Daley, PLS 35597

LOCATION PICTURES

PENROD 4-3

SECTION 4, TOWNSHIP 1 SOUTH, RANGE 65 WEST OF THE 6TH P.M.

DATE: 6/7/18



LOOKING NORTH



LOOKING WEST



LOOKING EAST



LOOKING SOUTH