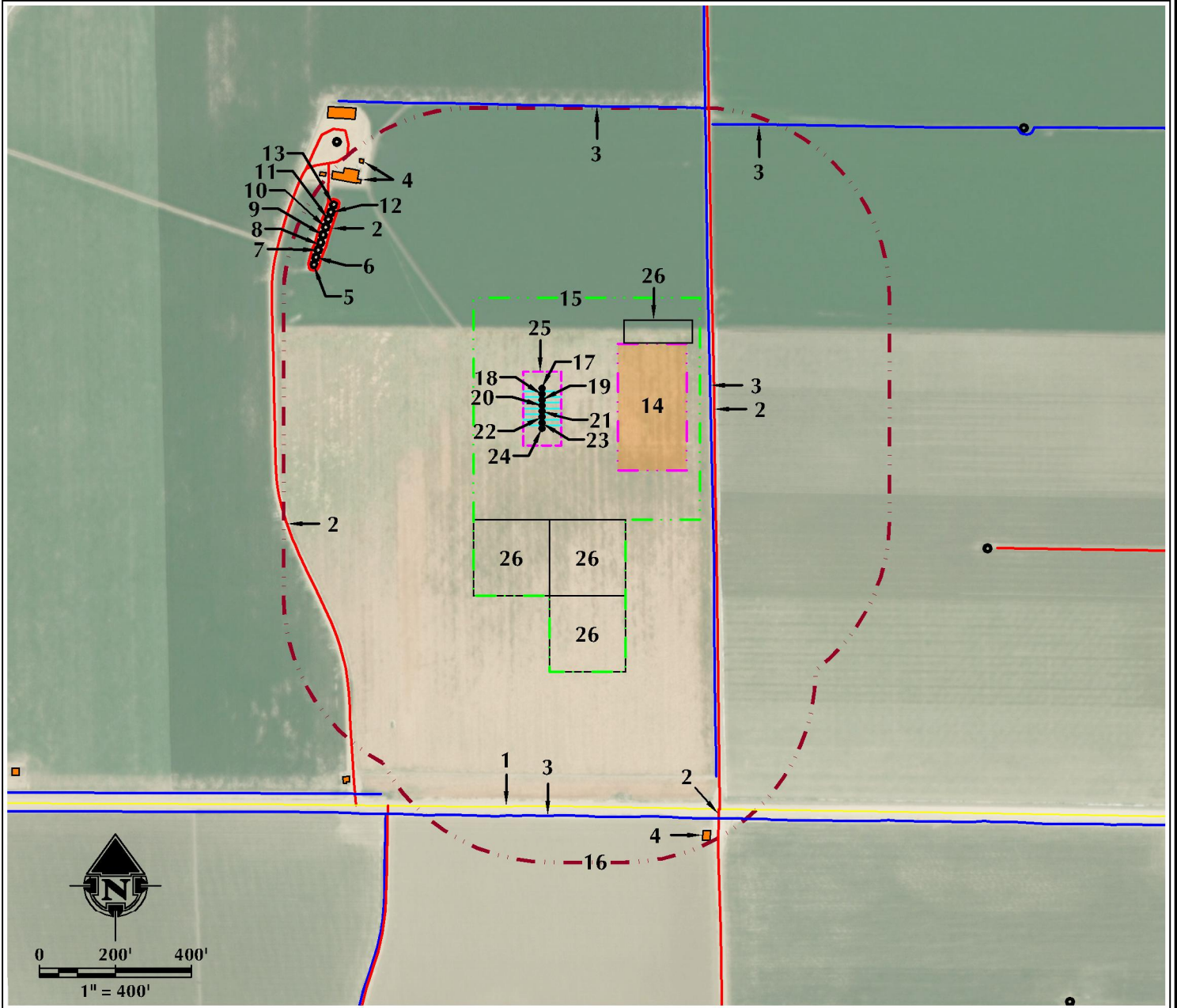


# LOCATION DRAWING WALTERS 14-21HZ HORIZONTAL MULTI-WELL PAD

SE1/4 SW1/4 SECTION 21, TOWNSHIP 4 NORTH, RANGE 67 WEST, 6TH P.M.



- |  |   |  |
|--|---|--|
| <ol style="list-style-type: none"> <li>1. COUNTY ROAD 42 IS ±1091' S.</li> <li>2. EXISTING PRIVATE ROADS ARE ±452' E, ±669' NW, ±706' W AND ±1199' SE.</li> <li>3. EXISTING DITCHES ARE ±442' E, ±746' N, ±827' NE AND ±1122' S.</li> <li>4. EXISTING FACILITIES ARE ±722' NW, ±758' NW AND ±1236' S.</li> <li>5. EXISTING WELL: WALTERS 21LDU IS ±684' NW.</li> <li>6. EXISTING WELL: WALTERS 24-21DU IS ±689' NW.</li> <li>7. EXISTING WELL: RYLAND 20YD IS ±694' NW.</li> </ol> | <ol style="list-style-type: none"> <li>8. EXISTING WELL: WALTERS 21QDU IS ±699' NW.</li> <li>9. EXISTING WELL: WEDCO 14-21DU IS ±705' NW.</li> <li>10. EXISTING WELL: RYLAND 20XD IS ±711' NW.</li> <li>11. EXISTING WELL: WALTERS 23-21DU IS ±718' NW.</li> <li>12. EXISTING WELL: WEDCO 13-21DU IS ±725' NW.</li> <li>13. EXISTING WELL: WALTERS 21ODU IS ±732' NW.</li> <li>14. PROPOSED WALTERS 14-21HZ FACILITY PAD IS ±200' E.</li> <li>15. OPERATIONAL DISTURBANCE AREA</li> <li>16. 500' BUFFER</li> <li>17. PROPOSED WELL: WALTERS 21-1HZ</li> </ol> | <ol style="list-style-type: none"> <li>18. PROPOSED WELL: WALTERS 21-2HZ</li> <li>19. PROPOSED WELL: WALTERS 21-3HZ</li> <li>20. PROPOSED WELL: WALTERS 21-4HZ</li> <li>21. PROPOSED WELL: WALTERS 21-5HZ</li> <li>22. PROPOSED WELL: WALTERS 21-6HZ</li> <li>23. PROPOSED WELL: WALTERS 21-7HZ</li> <li>24. PROPOSED WELL: WALTERS 21-8HZ</li> <li>25. PUMP JACK OPERATIONS AREA</li> <li>26. TEMPORARY EQUIPMENT AREA</li> </ol> |
|--|---|--|

<b>LEGEND</b> <ul style="list-style-type: none"> <li>● EXISTING WELL</li> <li>● PROPOSED WELL</li> <li>⊗ WATER WELL</li> <li>⊗ EXISTING FENCE</li> <li>— PUBLIC ROAD</li> <li>— PRIVATE ROAD</li> <li>--- 500' BUFFER</li> <li>--- DISTURBANCE AREA</li> <li>--- PUMP JACK AREA</li> <li>--- PROPOSED FACILITY</li> <li>--- DITCH/CANAL/DRAINAGE</li> <li>■ EXISTING FACILITY</li> <li>■ EXISTING BUILDINGS</li> <li>■ RESIDENCE/BUILDING UNIT</li> <li>□ TEMPORARY EQUIPMENT AREA</li> </ul>	<p style="text-align: center;"><b>* REFERENCE LOCATION *</b></p> <p>ALL MEASUREMENTS ARE MADE FROM REFERENCE WELL: WALTERS 21-1HZ          LAT: 40.294143° LONG: -104.897550° (NAD83)          EXISTING GROUND ELEVATION = 4937.1'          WELL FOOTAGES: 1106' FSL &amp; 2203' FWL</p> <p style="text-align: center;">SURFACE USE: IRRIGATED CROPLAND</p>
--	---

<p><b>609 CONSULTING, LLC</b>          LOVELAND OFFICE          1635 Fossil Drive, Suite 204          Loveland, Colorado 80538          Phone: 970-776-4331</p> <p><b>SHERIDAN OFFICE</b>          1095 Saberton Avenue          Sheridan, Wyoming 82801          Phone: 307-674-0609</p>	<p><b>DATE SURVEYED:</b> 3/1/18</p> <p><b>DATE:</b> 3/27/18</p> <p><b>DRAFTER:</b> DD</p> <p><b>REVISED:</b></p>	<p><b>DATA SOURCES:</b></p> <ul style="list-style-type: none"> <li>- AERIAL COURTESY OF ESRI, INC.</li> <li>- WATER WELLS COURTESY OF COLORADO DIVISION OF WATER RESOURCES</li> </ul>	<p><b>NEAREST BUILDING UNIT:</b> ±1890' NW</p> <p><b>PREPARED FOR:</b>  <span style="font-weight: bold; color: blue;">Kerr-McGee Oil &amp; Gas Onshore L.P.</span></p>
---	--	---	--