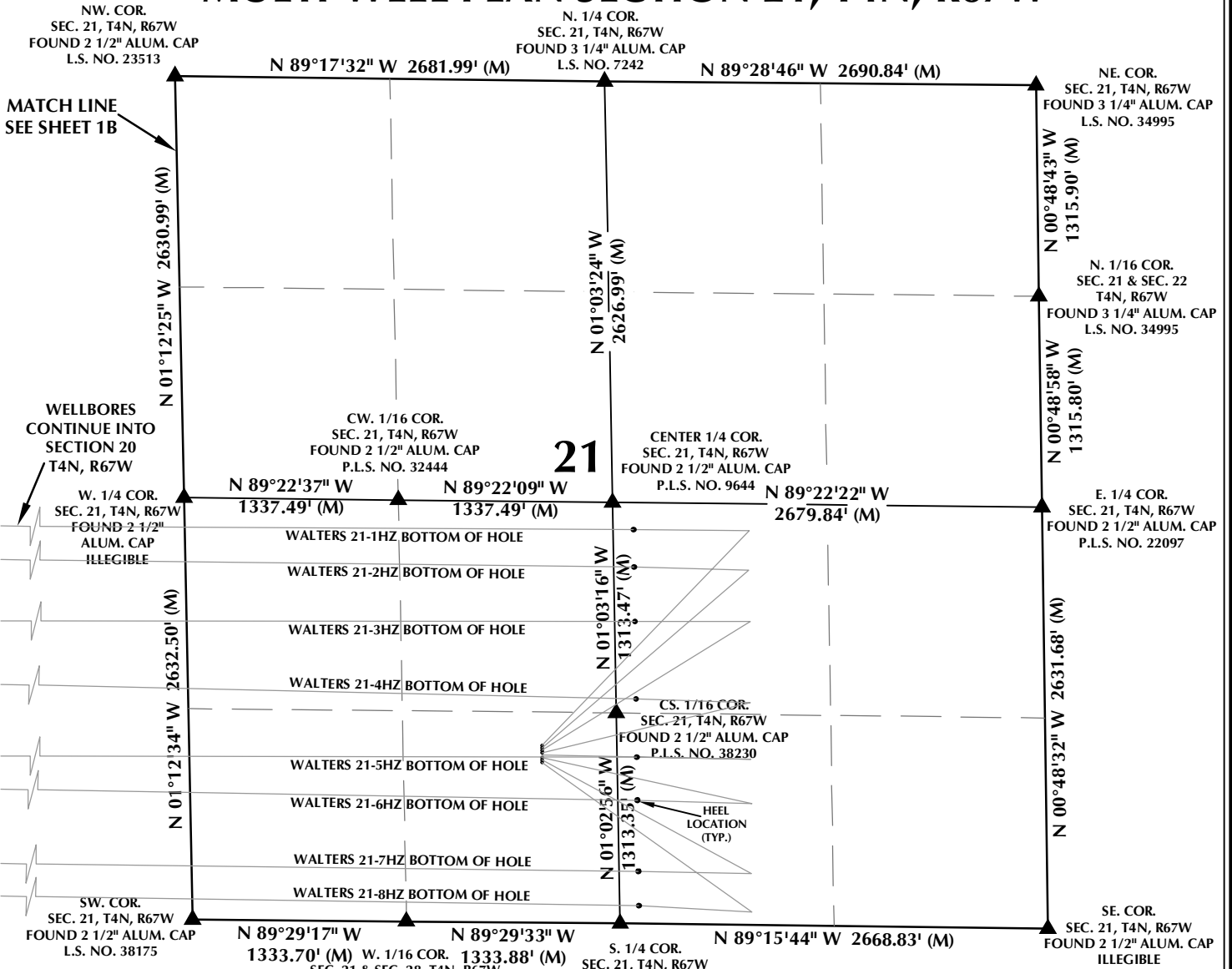
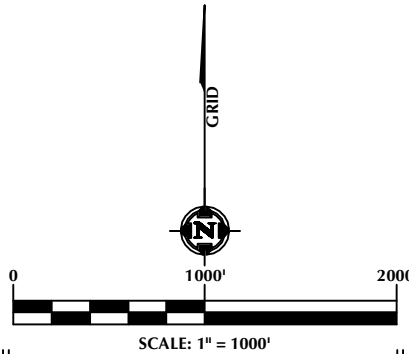


MULTI-WELL PLAN SECTION 21, T4N, R67W



WELL NOTES:
 WALTERS 21-1HZ
 SURFACE: 1106' FSL, 2203' FWL, SEC. 21, T4N, R67W
 BOTTOM HOLE: 2434' FSL, 2441' FWL, SEC. 20, T4N, R67W
 WALTERS 21-2HZ
 SURFACE: 1091' FSL, 2202' FWL, SEC. 21, T4N, R67W
 BOTTOM HOLE: 2233' FSL, 2442' FWL, SEC. 20, T4N, R67W
 WALTERS 21-3HZ
 SURFACE: 1076' FSL, 2202' FWL, SEC. 21, T4N, R67W
 BOTTOM HOLE: 1833' FSL, 2440' FWL, SEC. 20, T4N, R67W
 WALTERS 21-4HZ
 SURFACE: 1061' FSL, 2202' FWL, SEC. 21, T4N, R67W
 BOTTOM HOLE: 1469' FSL, 2440' FWL, SEC. 20, T4N, R67W
 WALTERS 21-5HZ
 SURFACE: 1046' FSL, 2201' FWL, SEC. 21, T4N, R67W
 BOTTOM HOLE: 992' FSL, 2441' FWL, SEC. 20, T4N, R67W
 WALTERS 21-6HZ
 SURFACE: 1031' FSL, 2201' FWL, SEC. 21, T4N, R67W
 BOTTOM HOLE: 806' FSL, 2440' FWL, SEC. 20, T4N, R67W
 WALTERS 21-7HZ
 SURFACE: 1016' FSL, 2201' FWL, SEC. 21, T4N, R67W
 BOTTOM HOLE: 336' FSL, 2441' FWL, SEC. 20, T4N, R67W
 WALTERS 21-8HZ
 SURFACE: 1001' FSL, 2200' FWL, SEC. 21, T4N, R67W
 BOTTOM HOLE: 137' FSL, 2441' FWL, SEC. 20, T4N, R67W



- NOTES:**
- ▲ INDICATES SECTION CORNER.
 - INDICATES CALCULATED CORNER.
 - BASIS OF BEARING DERIVED FROM COLORADO COORDINATE SYSTEM OF 1983 NORTH ZONE.
 - ALL MEASURED DISTANCES ARE GRID. COMBINED SCALE FACTOR: .99972673 CALCULATED FROM THE CENTER 1/4 CORNER OF SECTION 20, T4N, R67W.
 - WELL FOOTAGES ARE MEASURED AT RIGHT ANGLES TO THE SECTION LINES.

WELL PAD - WALTERS 14-21HZ

MULTI-WELL PLAN
 WALTERS 21-1HZ, WALTERS 21-2HZ, WALTERS 21-3HZ,
 WALTERS 21-4HZ, WALTERS 21-5HZ, WALTERS 21-6HZ,
 WALTERS 21-7HZ & WALTERS 21-8HZ
 LOCATED IN SECTIONS 20 & 21
 T4N, R67W, 6TH P.M.
 WELD COUNTY, COLORADO

**Kerr-McGee Oil &
 Gas Onshore L.P.**
 1099 18th Street
 Denver, Colorado 80202



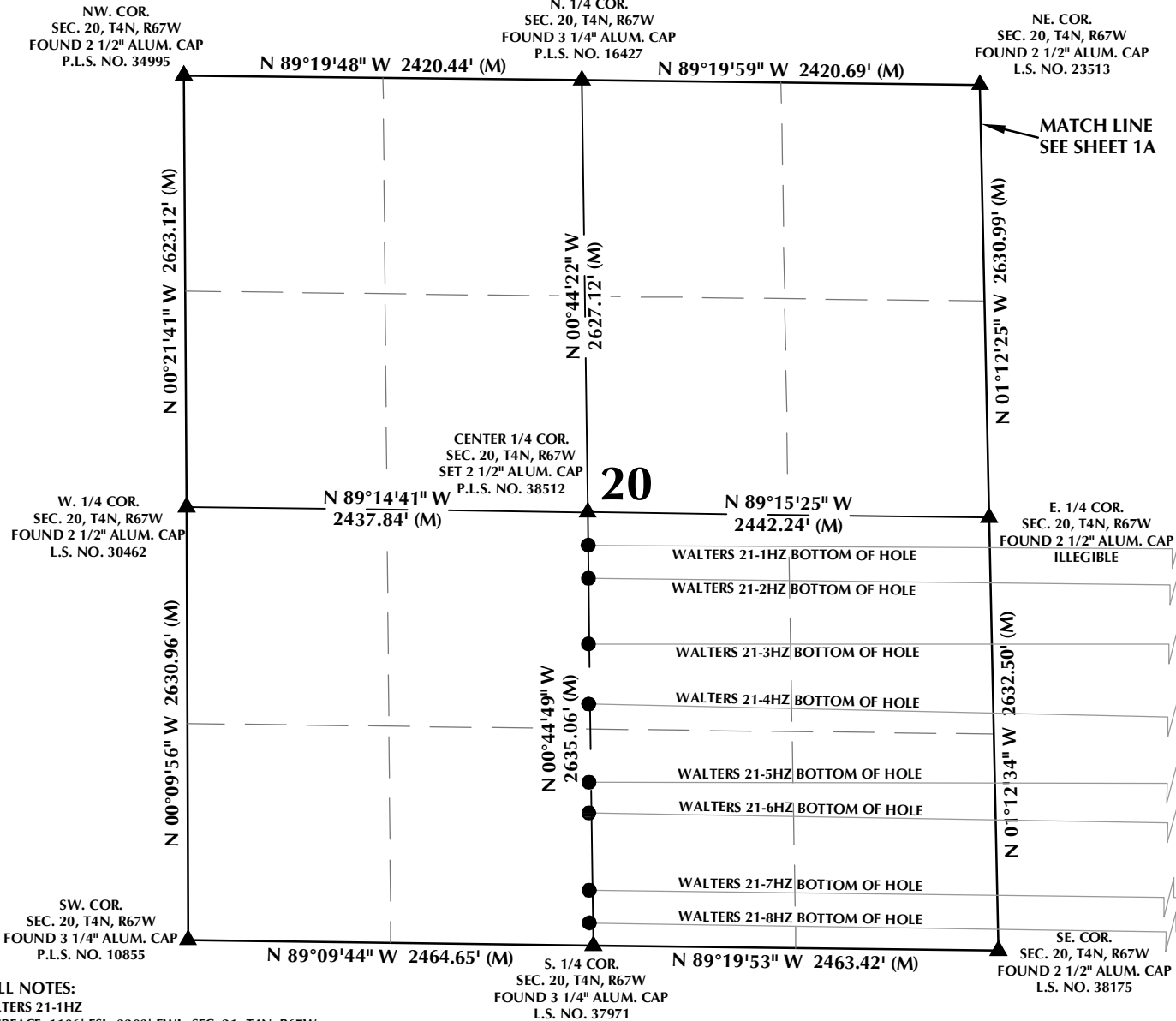
CONSULTING, LLC

SHERIDAN OFFICE 1095 Saberton Avenue
 Sheridan, Wyoming 82801
 Phone 307-674-0609

LOVELAND OFFICE 1635 Foxtrail Drive, Suite 204
 Loveland, Colorado 80538
 Phone 970-776-4331

| | | |
|-----------------------|-----------------------|-----------------------------------|
| DRAFTED BY: LMO | CHECKED BY: RKF | SHEET NO: 1A 1A OF 1 |
| DATE DRAFTED: 3/26/18 | DATE SURVEYED: 3/1/18 | |
| REVISED: 4/4/18 | FILE NAME: 17-235 | |

MULTI-WELL PLAN SECTION 20, T4N, R67W



WELL NOTES:

- WALTERS 21-1HZ
SURFACE: 1106' FSL, 2203' FWL, SEC. 21, T4N, R67W
BOTTOM HOLE: 2434' FSL, 2441' FWL, SEC. 20, T4N, R67W
- WALTERS 21-2HZ
SURFACE: 1091' FSL, 2202' FWL, SEC. 21, T4N, R67W
BOTTOM HOLE: 2233' FSL, 2442' FWL, SEC. 20, T4N, R67W
- WALTERS 21-3HZ
SURFACE: 1076' FSL, 2202' FWL, SEC. 21, T4N, R67W
BOTTOM HOLE: 1833' FSL, 2440' FWL, SEC. 20, T4N, R67W
- WALTERS 21-4HZ
SURFACE: 1061' FSL, 2202' FWL, SEC. 21, T4N, R67W
BOTTOM HOLE: 1469' FSL, 2440' FWL, SEC. 20, T4N, R67W
- WALTERS 21-5HZ
SURFACE: 1046' FSL, 2201' FWL, SEC. 21, T4N, R67W
BOTTOM HOLE: 992' FSL, 2441' FWL, SEC. 20, T4N, R67W
- WALTERS 21-6HZ
SURFACE: 1031' FSL, 2201' FWL, SEC. 21, T4N, R67W
BOTTOM HOLE: 806' FSL, 2440' FWL, SEC. 20, T4N, R67W
- WALTERS 21-7HZ
SURFACE: 1016' FSL, 2201' FWL, SEC. 21, T4N, R67W
BOTTOM HOLE: 336' FSL, 2441' FWL, SEC. 20, T4N, R67W
- WALTERS 21-8HZ
SURFACE: 1001' FSL, 2200' FWL, SEC. 21, T4N, R67W
BOTTOM HOLE: 137' FSL, 2441' FWL, SEC. 20, T4N, R67W

NOTES:

1. ▲ INDICATES SECTION CORNER.
2. ● INDICATES CALCULATED CORNER.
3. BASIS OF BEARING DERIVED FROM COLORADO COORDINATE SYSTEM OF 1983 NORTH ZONE.
4. ALL MEASURED DISTANCES ARE GRID. COMBINED SCALE FACTOR: .99972673 CALCULATED FROM THE CENTER 1/4 CORNER OF SECTION 20, T4N, R67W.
5. WELL FOOTAGES ARE MEASURED AT RIGHT ANGLES TO THE SECTION LINES.

WELL PAD - WALTERS 14-21HZ

MULTI-WELL PLAN
WALTERS 21-1HZ, WALTERS 21-2HZ, WALTERS 21-3HZ,
WALTERS 21-4HZ, WALTERS 21-5HZ, WALTERS 21-6HZ,
WALTERS 21-7HZ & WALTERS 21-8HZ
LOCATED IN SECTIONS 20 & 21
T4N, R67W, 6TH P.M.
WELD COUNTY, COLORADO

**Kerr-McGee Oil &
Gas Onshore L.P.**
1099 18th Street
Denver, Colorado 80202



CONSULTING, LLC

SHERIDAN OFFICE 1095 Saberton Avenue Sheridan, Wyoming 82801 Phone 307-674-0609
LOVELAND OFFICE 1635 Foxtrail Drive, Suite 204 Loveland, Colorado 80538 Phone 970-776-4331

| | | |
|-----------------------|-----------------------|-----------------------------------|
| DRAFTED BY: LMO | CHECKED BY: RKF | SHEET NO: 1B 1B OF 1 |
| DATE DRAFTED: 3/26/18 | DATE SURVEYED: 3/1/18 | |
| REVISED: 4/4/18 | FILE NAME: 17-235 | |