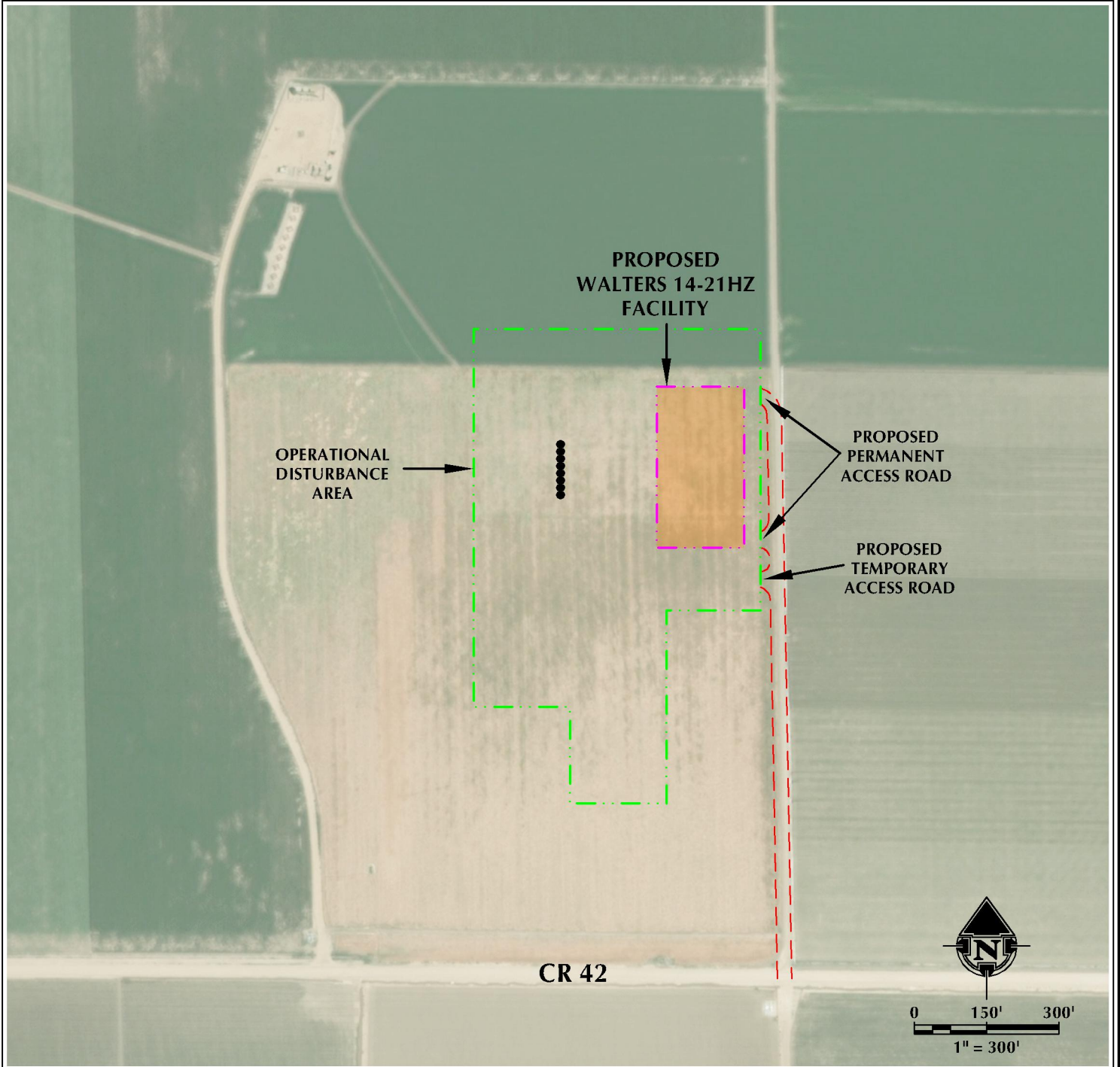


# WALTERS 14-21HZ ACCESS MAP

SE1/4 SW1/4 SECTION 21, TOWNSHIP 4 NORTH, RANGE 67 WEST, 6TH P.M.



## LEGEND

- PROPOSED WELL
- ACCESS
- PROPOSED FACILITY
- DISTURBANCE BOUNDARY



**609 CONSULTING, LLC**  
 LOVELAND OFFICE  
 1635 Foxgill Drive, Suite 204  
 Loveland, Colorado 80538  
 Phone: 970-776-4331

SHERIDAN OFFICE  
 1095 Saberton Avenue  
 Sheridan, Wyoming 82801  
 Phone: 307-674-0609

DATE SURVEYED: 3/1/18  
 DATE: 3/27/18  
 DRAFTER: DD  
 REVISED:

DATA SOURCES:  
 - AERIAL COURTESY OF ESRI, INC.

PREPARED FOR:  
**Kerr-McGee Oil & Gas Onshore L.P.**