

T4N, R67W

N. 1/4 COR.
SEC. 21, T4N, R67W
FOUND 3 1/4" ALUM. CAP
L.S. NO. 7242

NW. COR.
SEC. 21, T4N, R67W
FOUND 2 1/2" ALUM. CAP
L.S. NO. 23513

NE. COR.
SEC. 21, T4N, R67W
FOUND 3 1/4" ALUM. CAP
L.S. NO. 34995

SURFACE LOCATION: NAD 83
GROUND ELEVATION= 4938.0'
LATITUDE= 40.294019°
LONGITUDE= -104.897551°
LATITUDE= 40°17'38.470"
LONGITUDE= -104°53'51.184"
HEEL LOCATION: NAD 83
LATITUDE= 40.294931°
LONGITUDE= -104.895444°
LATITUDE= 40°17'41.751"
LONGITUDE= -104°53'43.600"
BOTTOM HOLE LOCATION: NAD 83
LATITUDE= 40.295359°
LONGITUDE= -104.914287°
LATITUDE= 40°17'43.292"
LONGITUDE= -104°54'51.433"

CW. 1/16 COR.
SEC. 21, T4N, R67W
FOUND 2 1/2" ALUM. CAP
P.L.S. NO. 32444

CENTER 1/4 COR.
SEC. 21, T4N, R67W
FOUND 2 1/2" ALUM. CAP
P.L.S. NO. 9644

N. 1/16 COR.
SEC. 21 & SEC. 22
T4N, R67W
FOUND 3 1/4" ALUM. CAP
L.S. NO. 34995

E. 1/4 COR.
SEC. 21, T4N, R67W
FOUND 2 1/2" ALUM. CAP
P.L.S. NO. 22097

W. 1/4 COR.
SEC. 21, T4N, R67W
FOUND 2 1/2" ALUM. CAP
ILLEGIBLE

N 89°22'37" W
1337.49' (M)

N 89°22'09" W
1337.49' (M)

N 89°22'22" W
2679.84' (M)

N 88°41'05" W 5258' GRID
N 88°17'44" W TRUE
S 83°28'55" W MAGNETIC

CS. 1/16 COR.
SEC. 21, T4N, R67W
FOUND 2 1/2" ALUM. CAP
P.L.S. NO. 38230

WELLBORE
CONTINUES INTO
SECTION 20
T4N, R67W

WALTERS 21-4HZ
SURFACE LOCATION

HEEL LOCATION

SW. COR.
SEC. 21, T4N, R67W
FOUND 2 1/2" ALUM. CAP
L.S. NO. 38175

N 89°29'17" W
1333.70' (M)

N 89°29'33" W
1333.88' (M)

S. 1/4 COR.
SEC. 21, T4N, R67W
FOUND 2 1/2" ALUM. CAP
P.L.S. NO. 24305

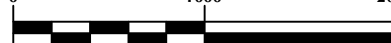
SE. COR.
SEC. 21, T4N, R67W
FOUND 2 1/2" ALUM. CAP
ILLEGIBLE

W. 1/16 COR.
SEC. 21 & SEC. 28, T4N, R67W
FOUND 2 1/2" ALUM. CAP
P.L.S. NO. 32444

23'21" 7°50'



NOTE:
MAGNETIC NORTH IS CURRENT AS OF 3/1/2018.
MAGNETIC NORTH CHANGES WEST 0°06' PER YEAR.



SCALE: 1" = 1000'

CERTIFICATE OF SURVEYOR:

THIS IS TO CERTIFY THAT THE ABOVE PLAT WAS PREPARED FROM FIELD NOTES OF ACTUAL SURVEYS MADE BY ME OR UNDER MY SUPERVISION AND THAT THE SAME ARE TRUE AND CORRECT TO THE BEST OF MY KNOWLEDGE AND BELIEF. THIS CERTIFICATE DOES NOT REPRESENT A LAND SURVEY PLAT OR IMPROVEMENT SURVEY PLAT AS DEFINED BY C.R.S. 38-5-102 AND CANNOT BE RELIED UPON TO DETERMINE OWNERSHIP.

Randall K. French
38512
3/26/18
RANDALL K. FRENCH
PROFESSIONAL LAND SURVEYOR
COLORADO REGISTRATION NUMBER 38512

NOTICE:
ACCORDING TO COLORADO STATE LAW YOU MUST COME TO COURT FOR LEGAL ACTION BASED UPON ANY DEFECT IN THIS SURVEY WITHIN THREE YEARS AFTER YOU FIRST DISCOVER SUCH DEFECT. IN NO EVENT MAY ANY ACTION BASED UPON ANY DEFECT IN THIS SURVEY BE COMMENCED MORE THAN TEN YEARS FROM THE DATE ON THE CERTIFICATION SHOWN HEREON.

NOTES:

- ▲ INDICATES SECTION CORNER.
- INDICATES CALCULATED CORNER.
- ELEVATION BASED ON NAVD88 (GEOID12B).
- BASIS OF BEARING DERIVED FROM COLORADO COORDINATE SYSTEM OF 1983 NORTH ZONE.
- ALL MEASURED DISTANCES ARE GRID.
- COMBINED SCALE FACTOR: .99972673 CALCULATED FROM THE CENTER 1/4 CORNER OF SECTION 20, T4N, R67W.
- OPERATOR: NICK ROADIFER / PDOP = 1.3.
- SEE ADDENDUM TO WELL LOCATION CERTIFICATE FOR EXISTING IMPROVEMENTS WITHIN 500' OF THE WELL PAD.
- WELL FOOTAGES ARE MEASURED AT RIGHT ANGLES TO THE SECTION LINES.
- THE BOTTOM OF HOLE BEARS N88°41'05"W, 5258' FROM THE HEEL LOCATION.

WELL PAD - WALTERS 14-21HZ

WALTERS 21-4HZ
WELL LOCATION CERTIFICATE
1061' FSL & 2202' FWL SESW (SURFACE)
1402' FSL & 2550' FEL NWSE (HEEL)
LOCATED IN SECTION 21
1469' FSL & 2440' FWL NESW (BOTTOM)
LOCATED IN SECTION 20
T4N, R67W, 6TH P.M.
WELD COUNTY, COLORADO

**Kerr-McGee Oil &
Gas Onshore L.P.**
1099 18th Street
Denver, Colorado 80202



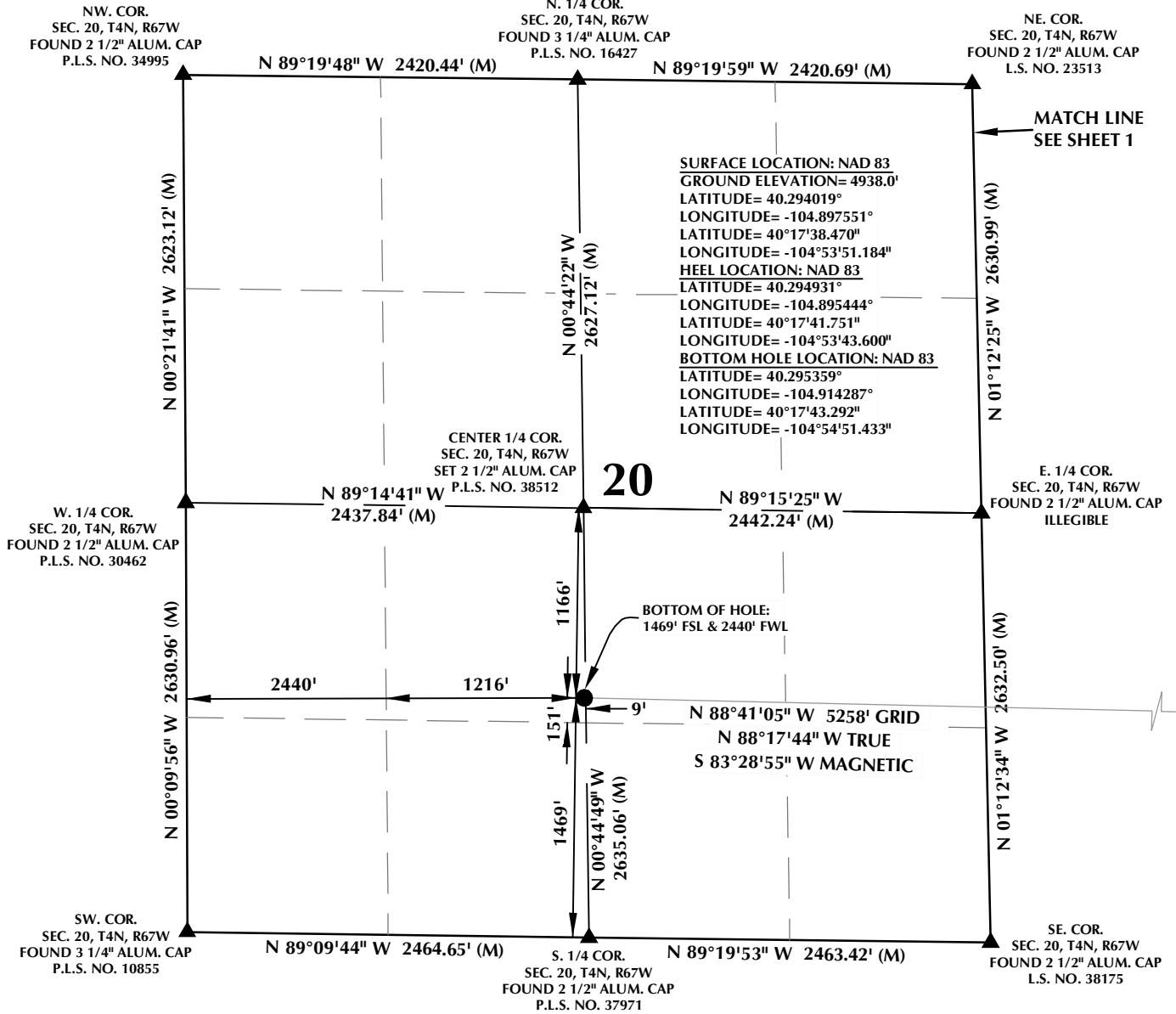
CONSULTING, LLC

SHERIDAN OFFICE
1095 Saberton Avenue
Sheridan, Wyoming 82801
Phone 307-674-0609

LOVELAND OFFICE
1635 Foxtrail Drive, Suite 204
Loveland, Colorado 80538
Phone 970-776-4331

DRAFTED BY:	LMO	CHECKED BY:	RKF	SHEET NO:
DATE DRAFTED:	3/26/18	DATE SURVEYED:	3/1/18	1
REVISED:		FILE NAME:	17-235	1 OF 2

T4N, R67W

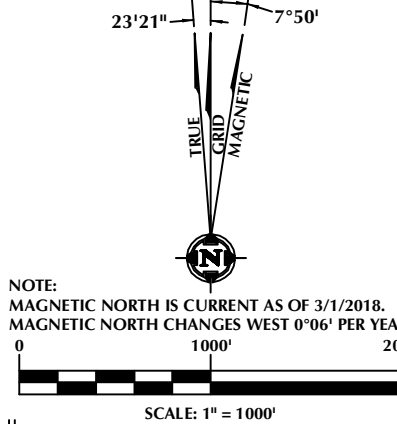


CERTIFICATE OF SURVEYOR:

THIS IS TO CERTIFY THAT THE ABOVE PLAT WAS PREPARED FROM FIELD NOTES OF ACTUAL SURVEYS MADE BY ME OR UNDER MY SUPERVISION AND THAT THE SAME ARE TRUE AND CORRECT TO THE BEST OF MY KNOWLEDGE AND BELIEF. THIS CERTIFICATE DOES NOT REPRESENT A LAND SURVEY PLAT OR IMPROVEMENT SURVEY PLAT AS DEFINED BY C.R.S. 38-5-102 AND CANNOT BE RELIED UPON TO DETERMINE OWNERSHIP.

Randall K. French
 RANDALL K. FRENCH
 PROFESSIONAL LAND SURVEYOR
 COLORADO REGISTRATION NUMBER 38512
 3/26/18

NOTICE: ACCORDING TO COLORADO STATE LAW YOU MUST COMMENCE LEGAL ACTION BASED UPON ANY DEFECT IN THIS SURVEY WITHIN THREE YEARS AFTER YOU FIRST DISCOVER SUCH DEFECT. IN NO EVENT MAY ANY ACTION BASED UPON ANY DEFECT IN THIS SURVEY BE COMMENCED MORE THAN TEN YEARS FROM THE DATE ON THE CERTIFICATION SHOWN HEREON.



NOTES:

- ▲ INDICATES SECTION CORNER.
- INDICATES CALCULATED CORNER.
- ELEVATION BASED ON NAVD88 (GEOID12B).
- BASIS OF BEARING DERIVED FROM COLORADO COORDINATE SYSTEM OF 1983 NORTH ZONE.
- ALL MEASURED DISTANCES ARE GRID.
- COMBINED SCALE FACTOR: .99972673 CALCULATED FROM THE CENTER 1/4 CORNER OF SECTION 20, T4N, R67W.
- OPERATOR: NICK ROADIFER / PDOP = 1.3.
- SEE ADDENDUM TO WELL LOCATION CERTIFICATE FOR EXISTING IMPROVEMENTS WITHIN 500' OF THE WELL PAD.
- WELL FOOTAGES ARE MEASURED AT RIGHT ANGLES TO THE SECTION LINES.
- THE BOTTOM OF HOLE BEARS N88°41'05"W, 5258' FROM THE HEEL LOCATION.

WELL PAD - WALTERS 14-21HZ

WALTERS 21-4HZ
WELL LOCATION CERTIFICATE
 1061' FSL & 2202' FWL SESW (SURFACE)
 1402' FSL & 2550' FWL NWSE (HEEL)
 LOCATED IN SECTION 21
 1469' FSL & 2440' FWL NESW (BOTTOM)
 LOCATED IN SECTION 20
 T4N, R67W, 6TH P.M.
 WELD COUNTY, COLORADO

**Kerr-McGee Oil &
 Gas Onshore L.P.**
 1099 18th Street
 Denver, Colorado 80202



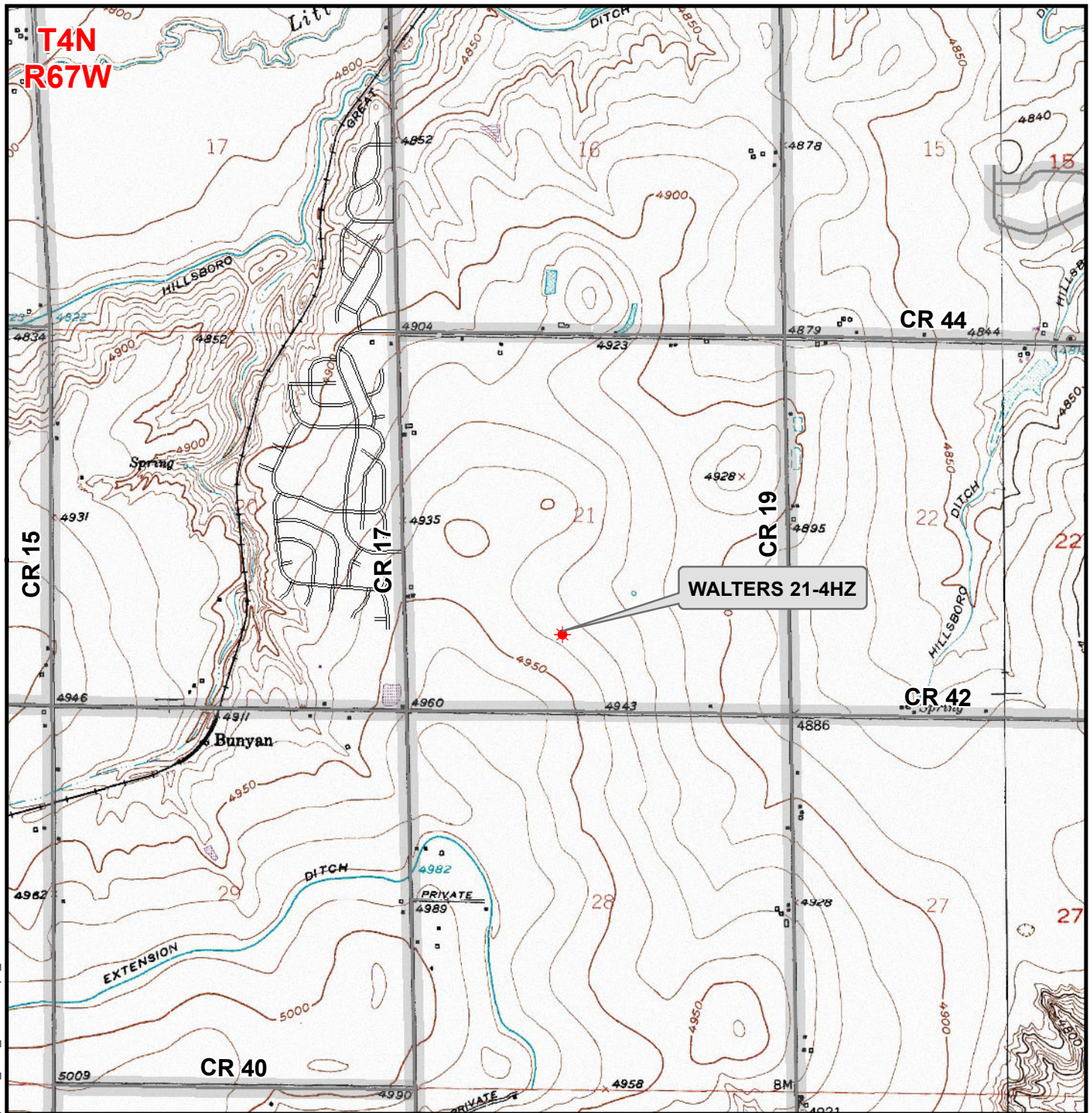
CONSULTING, LLC

SHERIDAN OFFICE
 1095 Saberton Avenue
 Sheridan, Wyoming 82801
 Phone 307-674-0609

LOVELAND OFFICE
 1635 Foxtrail Drive, Suite 204
 Loveland, Colorado 80538
 Phone 970-776-4331

DRAFTED BY:	LMO	CHECKED BY:	RKF	SHEET NO:
DATE DRAFTED:	3/26/18	DATE SURVEYED:	3/1/18	2
REVISED:		FILE NAME:	17-235	2 OF 2

K:\ANADARKO\2017\235_SHARON_&_WALTER_T4N_R67W_SEC_21\GIS\Maps_ABC\Walters 14-21HZ\Walters 21-4HZ.mxd 3/26/2018 1:53:34 PM



Legend

- ★ Well - Proposed == Road - Primitive - Existing — Road - County - Existing
—— Road - Improved - Existing — Road - Highway - Existing

WELL PAD - WALTERS 14-21HZ

GENERAL LOCATION MAP

WALTERS 21-4HZ

LOCATED IN SECTION 21

T4N, R67W, 6th P.M.

WELD COUNTY, COLORADO

**Kerr-McGee Oil &
Gas Onshore L.P.**

**1099 18th Street
Denver, Colorado 80202**



CONSULTING, LLC

SHERIDAN OFFICE
1095 Saberton Avenue
Sheridan, Wyoming 82801
Phone 307-674-0609

LOVELAND OFFICE
1635 Foxtail Drive, Suite 204
Loveland, Colorado 80538
Phone 970-776-4331



SCALE: 1" = 2,000ft

NAD83 CO-Nft

DRAWN: DP

DATE: 27 Mar 2018

REVISED:

DATE: