



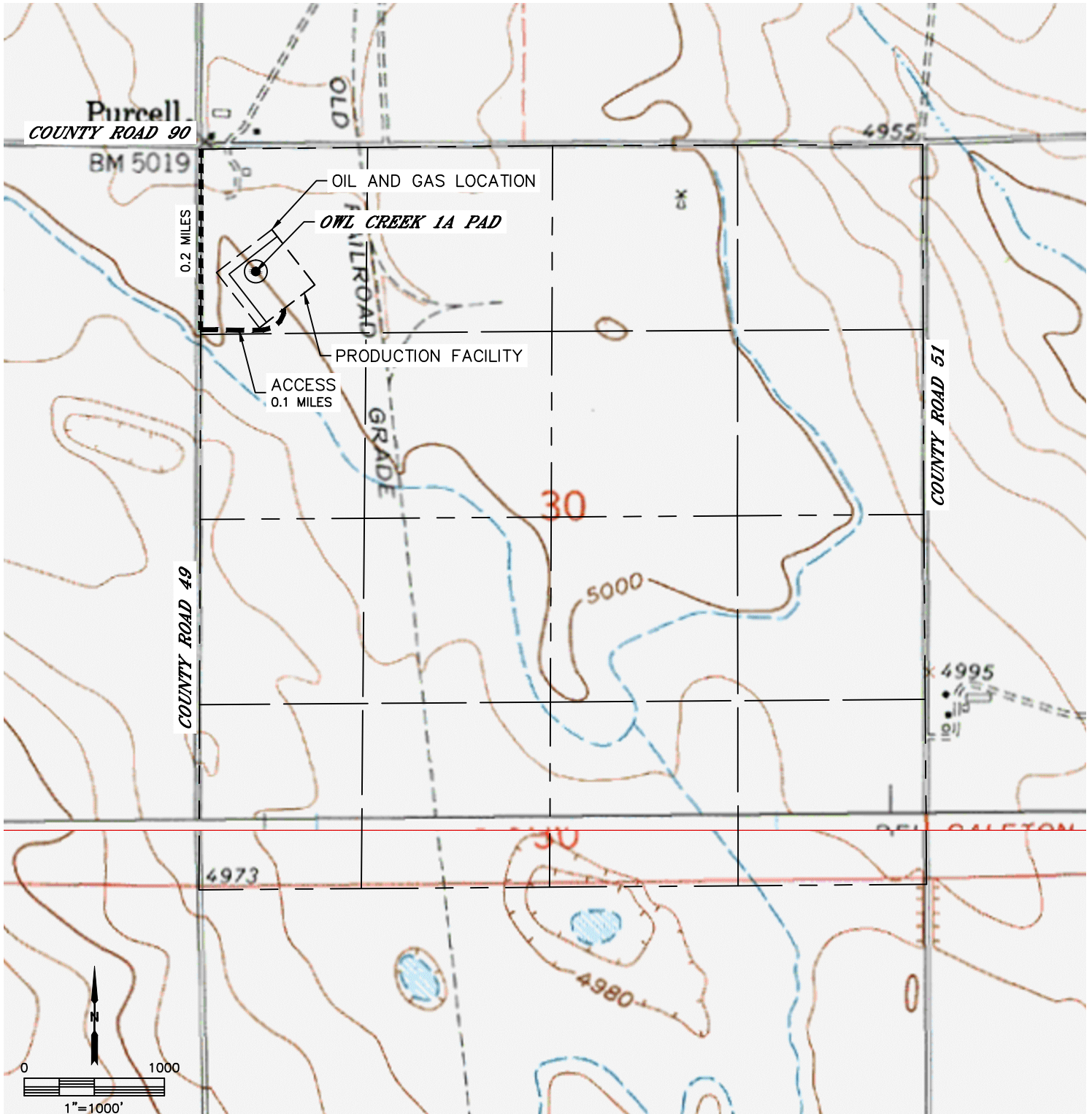
Lat40°, Inc. 6250 W. 10th Street, Unit 2, Greeley, CO 970-515-5294

# ACCESS ROAD MAP

## OWL CREEK 1A PAD

SECTION: 30  
TOWNSHIP: 8N  
RANGE: 64W  
6TH. P.M.  
WELD COUNTY, CO

DRIVING DIRECTIONS TO THE OWL CREEK 1A PAD:  
FROM THE INTERSECTION OF COUNTY ROAD 90 AND COUNTY ROAD 49, DRIVE SOUTH ON COUNTY ROAD 49 FOR 0.2 MILES TO AN EXISTING ACCESS ROAD. TURN EAST ONTO ACCESS ROAD AND DRIVE 0.1 MILES TO THE PROPOSED OWL CREEK 1A PAD LOCATION.





Lat40°, Inc. 6250 W. 10th Street, Unit 2, Greeley, CO 970-515-5294

# ACCESS ROAD MAP

OWL CREEK 1A PAD

SECTION: 30  
TOWNSHIP: 8N  
RANGE: 64W  
6TH. P.M.  
WELD COUNTY, CO

