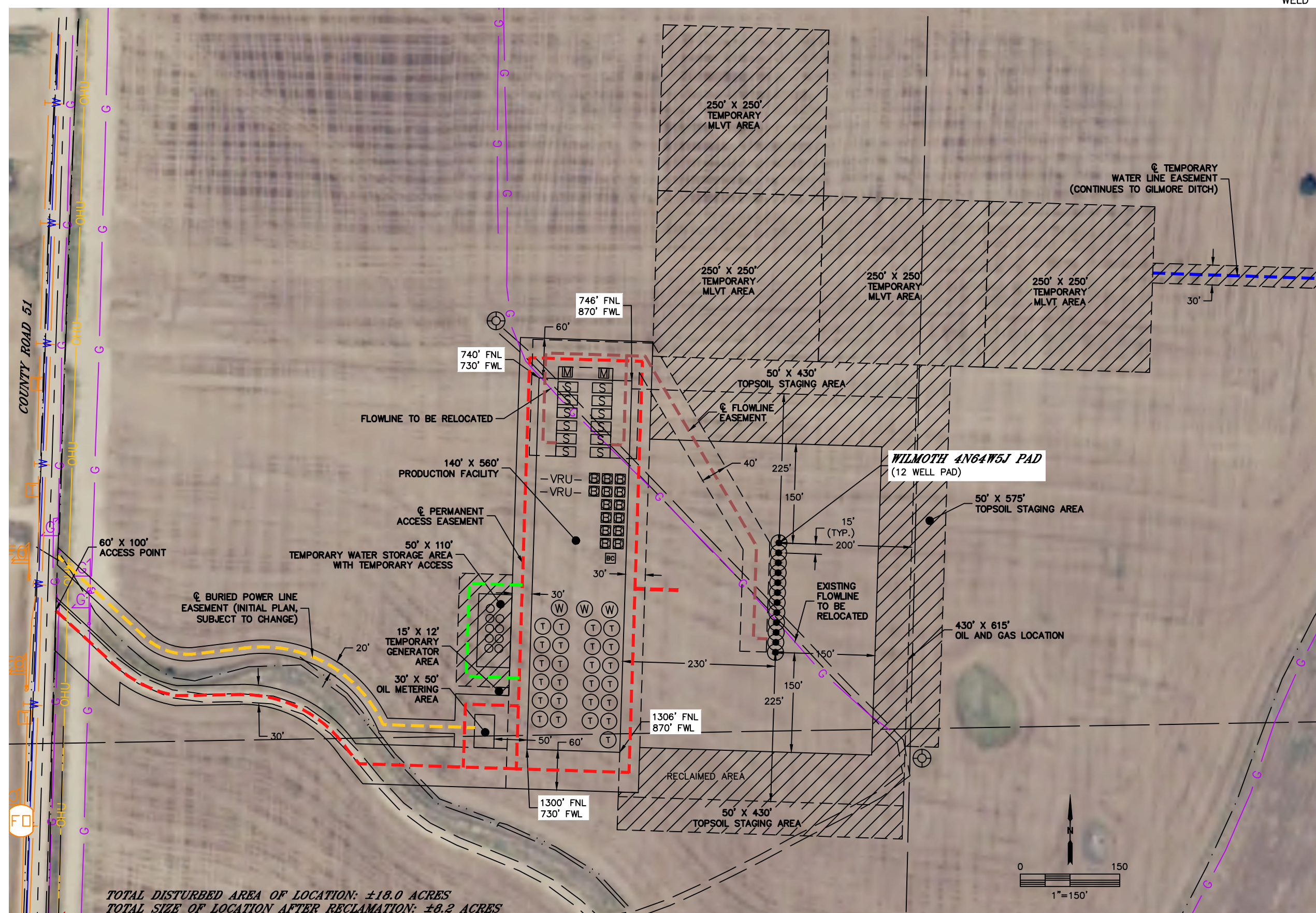


PROPOSED SCALED FACILITY DRAWING

WILMOTH 4N64W5J PAD

SECTION: 5
TOWNSHIP: 4N
RANGE: 64W
6TH. P.M.
WELD COUNTY, CO



TOTAL DISTURBED AREA OF LOCATION: ±18.0 ACRES
TOTAL SIZE OF LOCATION AFTER RECLAMATION: ±8.2 ACRES

DATE: 5/25/2018
PROJECT#: 2016109