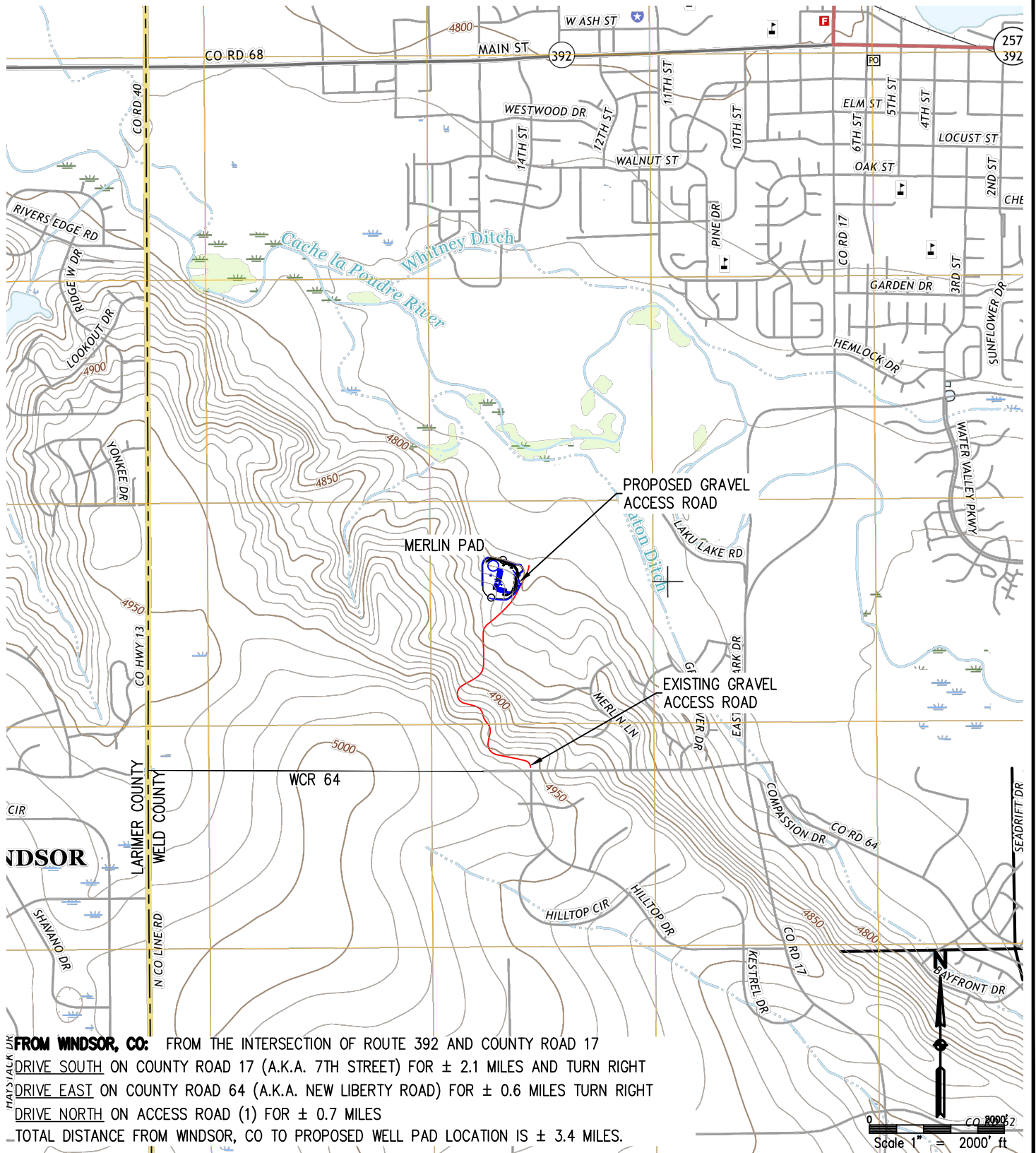


SW 1/4 NW 1/4 SECTION 29, TOWNSHIP 6 NORTH, RANGE 67 WEST,



FROM WINDSOR, CO: FROM THE INTERSECTION OF ROUTE 392 AND COUNTY ROAD 17  
DRIVE SOUTH ON COUNTY ROAD 17 (A.K.A. 7TH STREET) FOR ± 2.1 MILES AND TURN RIGHT  
DRIVE EAST ON COUNTY ROAD 64 (A.K.A. NEW LIBERTY ROAD) FOR ± 0.6 MILES TURN RIGHT  
DRIVE NORTH ON ACCESS ROAD (1) FOR ± 0.7 MILES  
 TOTAL DISTANCE FROM WINDSOR, CO TO PROPOSED WELL PAD LOCATION IS ± 3.4 MILES.



DRAWN BY RPM		CHECKED BY AAD	
INITIAL SUBMITTAL		2/14/2018	
REVISED		4/27/2018	
DRAWING SIZE		8.5" X 11"	
JOB NO.		EXT06N67W30-02	
SHEET	1	OF	1

