

3.25" AC 38106
LAT 40.42287°N
LONG 104.22367°W

MID LATERAL TARGET
0' FNL
1983' FWL

S00°52'10"E - 5225.77'

S00°50'50"E - 5250.81'

8

N66° 24' 37.27"E
723.7

TARGET 1
531'FSL; 2007'FWL

N89°30'29"E - 5350.92'

3.25" AC LS 7242
LAT 40.40854°N
LONG 104.24268°W

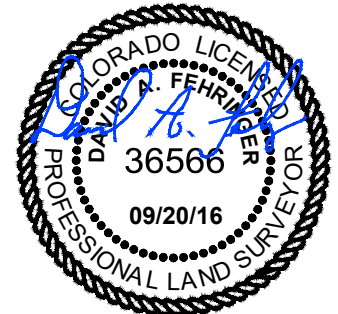
3.25" AC 7242
LAT 40.40845°N
LONG 104.22367°W

- ALL BEARINGS ARE GRID BASED UPON THE COLORADO STATE PLANE COORDINATE SYSTEM, NORTH ZONE, NAD83(2011) DERIVED FROM POST-PROCESSED STATIC GPS OBSERVATIONS.
- DISTANCES ARE ON GRID
- VERTICAL DATUM IS NAVD88 BASED UPON GPS OBSERVATIONS
- PDOP VALUE EQUALS 2.0.
- GPS OPERATOR: MARC MAYER 9-7-16.
- GROUND ELEVATION AT WELLHEAD = 4605'
- ALL SECTION LENGTHS ARE MEASURED DISTANCES UNLESS NOTED BY (R), RECORD BEARING AND DISTANCE.
- NEAREST CULTURAL DISTANCES
 - BUILDINGS: 5280' +
 - BUILDING UNIT: 5280' +
 - HIGH OCCUPANCY BUILDING UNIT: 5280'+
 - DESIGNATED OUTSIDE ACTIVITY AREA: 5280'+
 - PUBLIC ROAD: 230'+/-
 - ABOVE GROUND UTILITY: 293' +/-
 - RAILROAD: 5280'+
 - PROPERTY LINE: 247' +/-

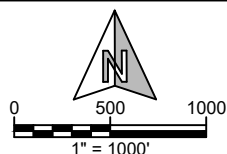
I, DAVID A. FEHRINGER OF LANDER, WYOMING HEREBY CERTIFY THAT THIS WELL LOCATION CERTIFICATE WAS PREPARED FROM NOTES TAKEN DURING AN ACTUAL SURVEY ON SEPTEMBER 7, 2016; AND THAT IT CORRECTLY SHOWS THE DRILLING LOCATION OF BONANZA CREEK ENERGY, INC. PRONGHORN 24-8-5XRLNB AS STAKED DURING SAID SURVEY. THIS MAP DOES NOT REPRESENT A BOUNDARY SURVEY OR AN IMPROVEMENT LOCATION PLAT AND SHOULD NOT BE USED FOR THE ESTABLISHMENT OF BOUNDARY LINES.

4	NAD 83		STATE PLANE COORDINATES	
24-8-5XRLNB	LATITUDE(N)	LONGITUDE(W)	NORTHING	EASTING
SURFACE	40.4091939	104.2380972	1394410	3351393
TARGET 1	40.4099629	104.2356758	1394700	3352064
MID LATERAL	40.4228759	104.2357775	1399403	3351968
BOTTOM HOLE	40.4361611	104.2359031	1404242	3351864

PAD CORNERS		NAD 83	
PH J-8 PAD	LATITUDE(N)	LONGITUDE(W)	
NW	40.4100867	104.2394093	
NE	40.4100652	104.2374344	
SE	40.4087477	104.2374589	
SW	40.4087697	104.2394338	



**WILLIAM H. SMITH &
ASSOCIATES, Inc.**
155 N. 1st Street
Lander, WY 82520
Phone: 307-335-5646



Drawn By: DAF	Checked By: MAM
Job No.: 15043	Date: 09/20/16
Revision: Move north well row to south well row MM 2/26/18	

IF BAR LENGTH DOES NOT EQUAL
1"(ONE INCH), THIS PAGE WAS NOT
PLOTTED TO THE INTENDED SCALE

LOCATION CERTIFICATE

PRONGHORN
24-8-5XRLNB
SURFACE HOLE
SW¼ SW¼, SECTION 8,
T.5N., R.61W., 6th PM
WELD COUNTY, COLORADO



410 17th Street
Denver, CO 80202
(720) 440-6100

SHEET

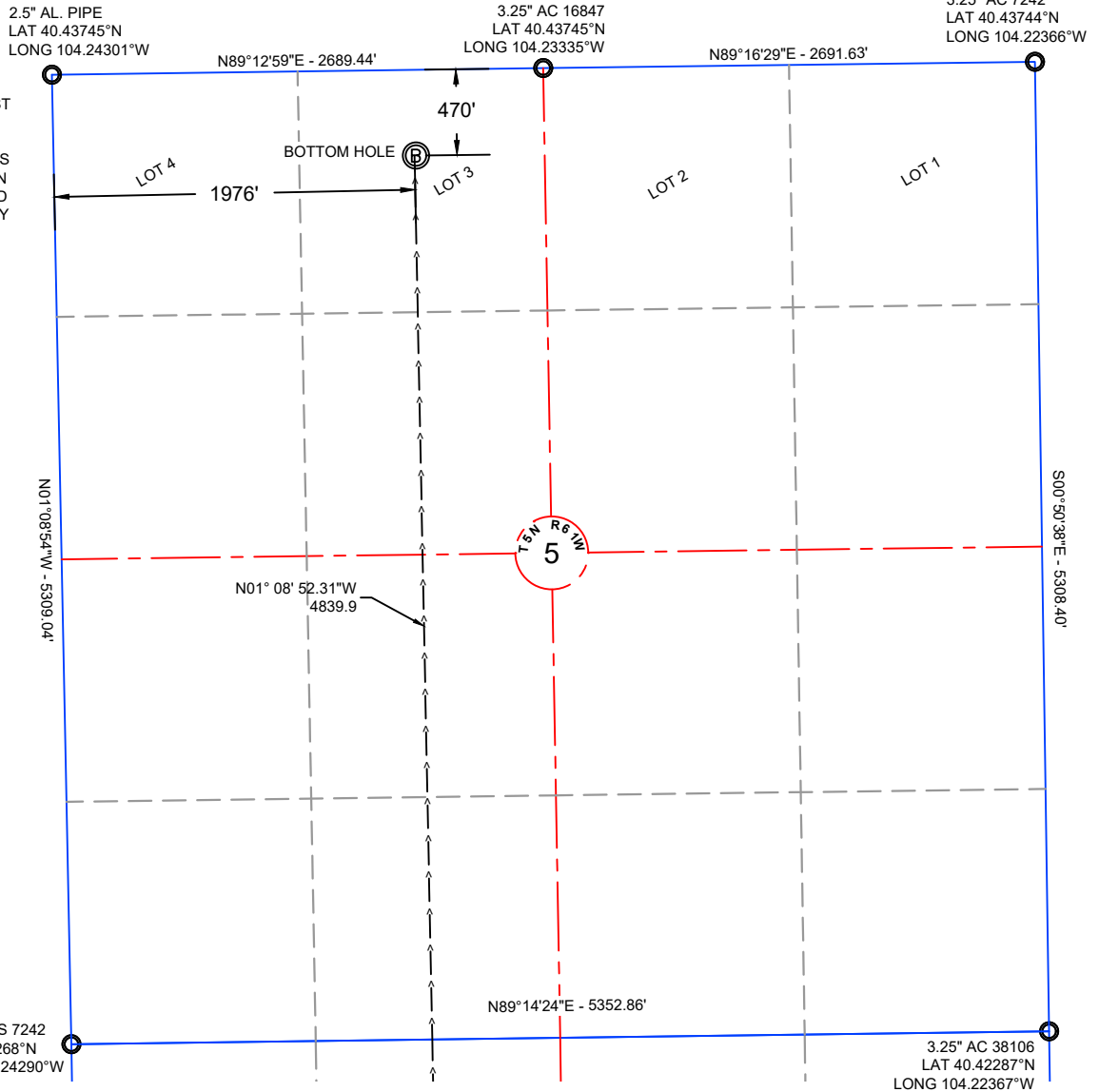
1

OF

2

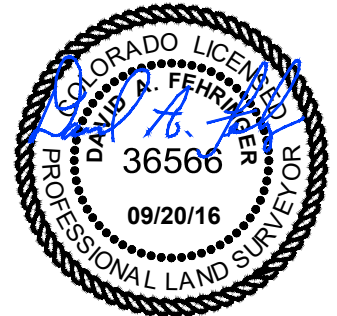
Z:\PROJECTS\1319-01_BONANZA\5N-61W\DWG\PRONGHORN J-8 CERTS 2-26-18.dwg SAVED DATE 2018-02-26 14:21

NOTE:
UNDER COLORADO LAW, YOU MUST
COMMENCE ANY LEGAL ACTION
BASED ON ANY DEFECT IN THIS
CERTIFICATE WITHIN THREE YEARS
AFTER DEFECT IS DISCOVERED. IN
NO EVENT MAY ANY ACTION BASED
UPON ANY DEFECT IN THIS SURVEY
BE COMMENCED MORE THAN TEN
YEAR AFTER DATE OF THIS
CERTIFICATE SHOWN HEREON
(13-80105 C.R.S.)



- NOTES:
- ALL BEARINGS ARE GRID BASED UPON THE COLORADO STATE PLANE COORDINATE SYSTEM, NORTH ZONE, NAD83(2011) DERIVED FROM POST-PROCESSED STATIC GPS OBSERVATIONS.
 - DISTANCES ARE ON GRID
 - VERTICAL DATUM IS NAVD88 BASED UPON GPS OBSERVATIONS
 - PDOP VALUE EQUALS 2.0.
 - GPS OPERATOR: MARC MAYER 9-7-16.
 - GROUND ELEVATION AT WELLHEAD = 4605'
 - ALL SECTION LENGTHS ARE MEASURED DISTANCES UNLESS NOTED BY (R), RECORD BEARING AND DISTANCE.
 - NEAREST CULTURAL DISTANCES
BUILDINGS: 5280' +
BUILDING UNIT: 5280' +
HIGH OCCUPANCY BUILDING UNIT: 5280'+
DESIGNATED OUTSIDE ACTIVITY AREA: 5280'+
PUBLIC ROAD: 230'+/-
ABOVE GROUND UTILITY: 293' +/-
RAILROAD: 5280'+
PROPERTY LINE: 247' +/-

CERTIFICATE OF SURVEYOR:
I, DAVID A. FEHRINGER OF LANDER, WYOMING HEREBY CERTIFY
THAT THIS WELL LOCATION CERTIFICATE WAS PREPARED FROM
NOTES TAKEN DURING AN ACTUAL SURVEY ON SEPTEMBER 7, 2016;
AND THAT IT CORRECTLY SHOWS THE DRILLING LOCATION OF
BONANZA CREEK ENERGY, INC. PRONGHORN 24-8-5XRLNB AS
STAKED DURING SAID SURVEY. THIS MAP DOES NOT REPRESENT A
BOUNDARY SURVEY OR AN IMPROVEMENT LOCATION PLAT AND
SHOULD NOT BE USED FOR THE ESTABLISHMENT OF BOUNDARY
LINES.



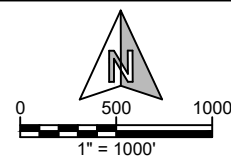
4	NAD 83		STATE PLANE COORDINATES	
24-8-5XRLNB	LATITUDE(N)	LONGITUDE(W)	NORTHING	EASTING
SURFACE	40.4091939	104.2380972	1394410	3351393
TARGET 1	40.4099629	104.2356758	1394700	3352064
MID LATERAL	40.4228759	104.2357775	1399403	3351968
BOTTOM HOLE	40.4361611	104.2359031	1404242	3351864

PAD CORNERS	NAD 83	
PH J-8 PAD	LATITUDE(N)	LONGITUDE(W)
NW	40.4100867	104.2394093
NE	40.4100652	104.2374344
SE	40.4087477	104.2374589
SW	40.4087692	104.2394338



**WILLIAM H. SMITH &
ASSOCIATES, Inc.**
155 N. 1st Street
Lander, WY 82520
Phone: 307-335-5646

Drawn By: DAF
Job No.: 15043
Checked By: MAM
Date: 09/20/16
Revision: Move north well row to south well row MM 2/26/18



IF BAR LENGTH DOES NOT EQUAL
1"(ONE INCH), THIS PAGE WAS NOT
PLOTTED TO THE INTENDED SCALE.

LOCATION CERTIFICATE

PRONGHORN
24-8-5XRLNB
BOTTOM HOLE
NE¼NW¼ (L3), SECTION 5,
T.5N., R.61W., 6th PM
WELD COUNTY, COLORADO



410 17th Street
Denver, CO 80202
(720) 440-6100

SHEET
2
OF
2