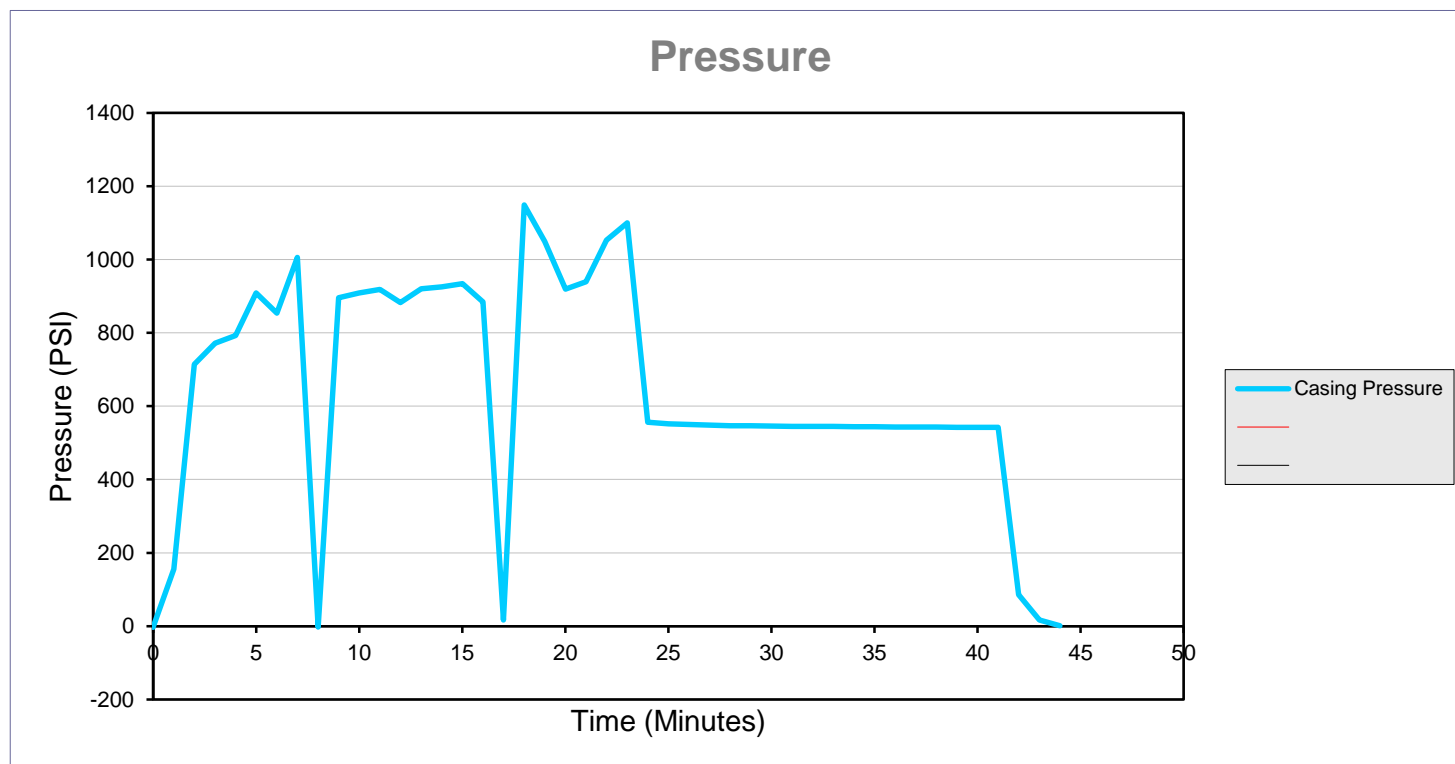


Data Collection Report

Gauge Information	
Serial Number	462915
Model	15KPSIXP2I
Message Store	-----
Units	PSI

Run Info	
Start Time	6/2/18 9:03:47 AM
Stop Time	6/2/18 9:48:13 AM
Logging Interval	60
Lease: DPG F12-28	API: 05-123-28053



Serial Number 462915
 Model 15KPSIXP2I
 Units PSI
 Firmware Version R0223
 Run Index 3
 Logging Type Actual
 Logging Interval 60
 Start Time 6/2/2018 9:03
 Stop Time 6/2/2018 9:48

Pressure (PSI)

Time	Casing Pressure	Event	Event Date	Time (hours)	Time (minutes)	Elapsed Time	Timestamp
0		Battery OK		0.00	0.00	0:00:00	6/2/18 9:03:47
0		Logging Interval, 60		0.00	0.00	0:00:00	6/2/18 9:03:47
0		Tare, 0		0.00	0.00	0:00:00	6/2/18 9:03:47
0	-3			0.00	0.00	0:00:00	6/2/18 9:03:47
60	156			0.02	1.00	0:01:00	6/2/18 9:04:47
120	714			0.03	2.00	0:02:00	6/2/18 9:05:47
180	772			0.05	3.00	0:03:00	6/2/18 9:06:47
240	793			0.07	4.00	0:04:00	6/2/18 9:07:47
300	909			0.08	5.00	0:05:00	6/2/18 9:08:47
360	854			0.10	6.00	0:06:00	6/2/18 9:09:47
420	1006			0.12	7.00	0:07:00	6/2/18 9:10:47
480	-2			0.13	8.00	0:08:00	6/2/18 9:11:47
540	896			0.15	9.00	0:09:00	6/2/18 9:12:47
600	909			0.17	10.00	0:10:00	6/2/18 9:13:47
660	918			0.18	11.00	0:11:00	6/2/18 9:14:47
720	883			0.20	12.00	0:12:00	6/2/18 9:15:47
780	920			0.22	13.00	0:13:00	6/2/18 9:16:47
840	925			0.23	14.00	0:14:00	6/2/18 9:17:47
900	934			0.25	15.00	0:15:00	6/2/18 9:18:47
960	884			0.27	16.00	0:16:00	6/2/18 9:19:47
1020	17			0.28	17.00	0:17:00	6/2/18 9:20:47
1080	1149			0.30	18.00	0:18:00	6/2/18 9:21:47
1140	1049			0.32	19.00	0:19:00	6/2/18 9:22:47
1200	919			0.33	20.00	0:20:00	6/2/18 9:23:47
1260	939			0.35	21.00	0:21:00	6/2/18 9:24:47
1320	1053			0.37	22.00	0:22:00	6/2/18 9:25:47
1380	1100			0.38	23.00	0:23:00	6/2/18 9:26:47

1440	556	0.40	24.00	0:24:00	6/2/18 9:27:47
1500	552	0.42	25.00	0:25:00	6/2/18 9:28:47
1560	550	0.43	26.00	0:26:00	6/2/18 9:29:47
1620	548	0.45	27.00	0:27:00	6/2/18 9:30:47
1680	547	0.47	28.00	0:28:00	6/2/18 9:31:47
1740	547	0.48	29.00	0:29:00	6/2/18 9:32:47
1800	546	0.50	30.00	0:30:00	6/2/18 9:33:47
1860	545	0.52	31.00	0:31:00	6/2/18 9:34:47
1920	545	0.53	32.00	0:32:00	6/2/18 9:35:47
1980	545	0.55	33.00	0:33:00	6/2/18 9:36:47
2040	544	0.57	34.00	0:34:00	6/2/18 9:37:47
2100	544	0.58	35.00	0:35:00	6/2/18 9:38:47
2160	543	0.60	36.00	0:36:00	6/2/18 9:39:47
2220	543	0.62	37.00	0:37:00	6/2/18 9:40:47
2280	543	0.63	38.00	0:38:00	6/2/18 9:41:47
2340	542	0.65	39.00	0:39:00	6/2/18 9:42:47
2400	542	0.67	40.00	0:40:00	6/2/18 9:43:47
2460	542	0.68	41.00	0:41:00	6/2/18 9:44:47
2520	86	0.70	42.00	0:42:00	6/2/18 9:45:47
2580	17	0.72	43.00	0:43:00	6/2/18 9:46:47
2640	1	0.73	44.00	0:44:00	6/2/18 9:47:47