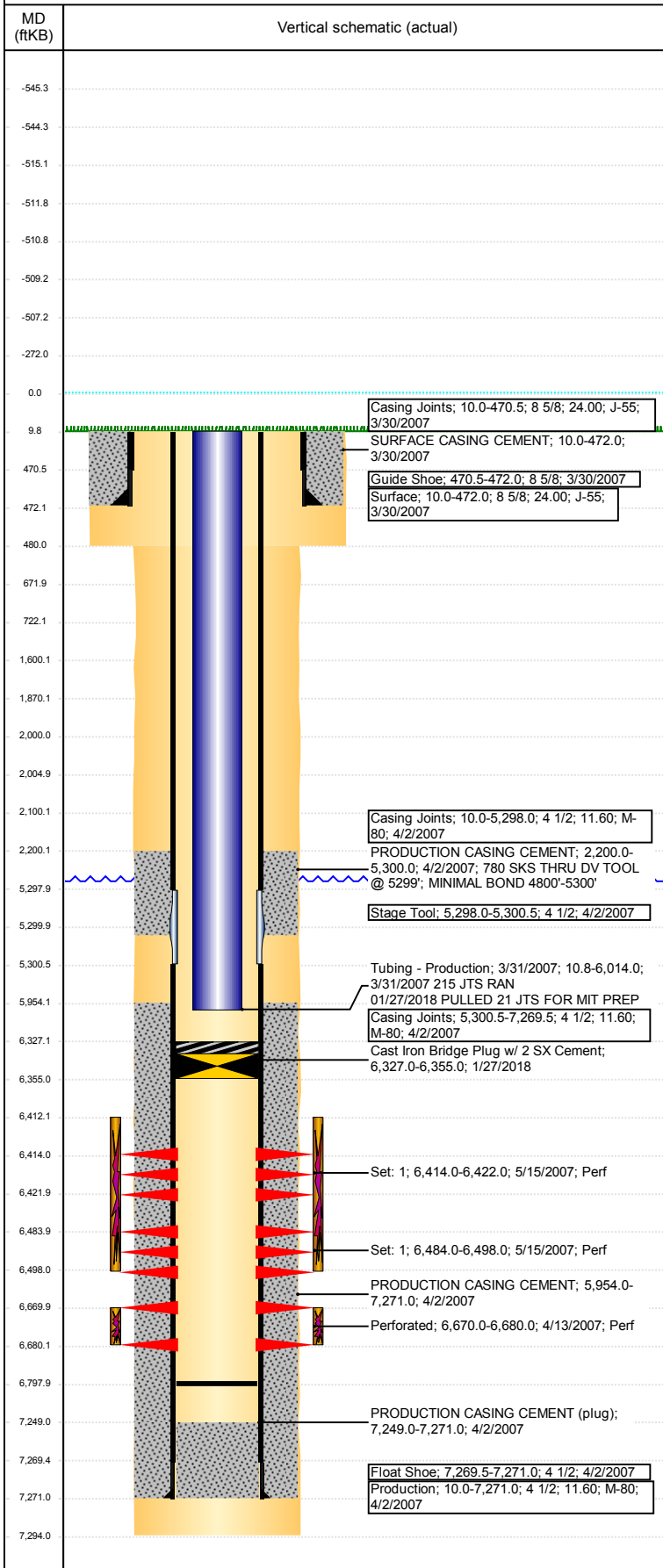


Wellbore Schematic Input Report

Well Name: GUTTERSEN USX CC17-03

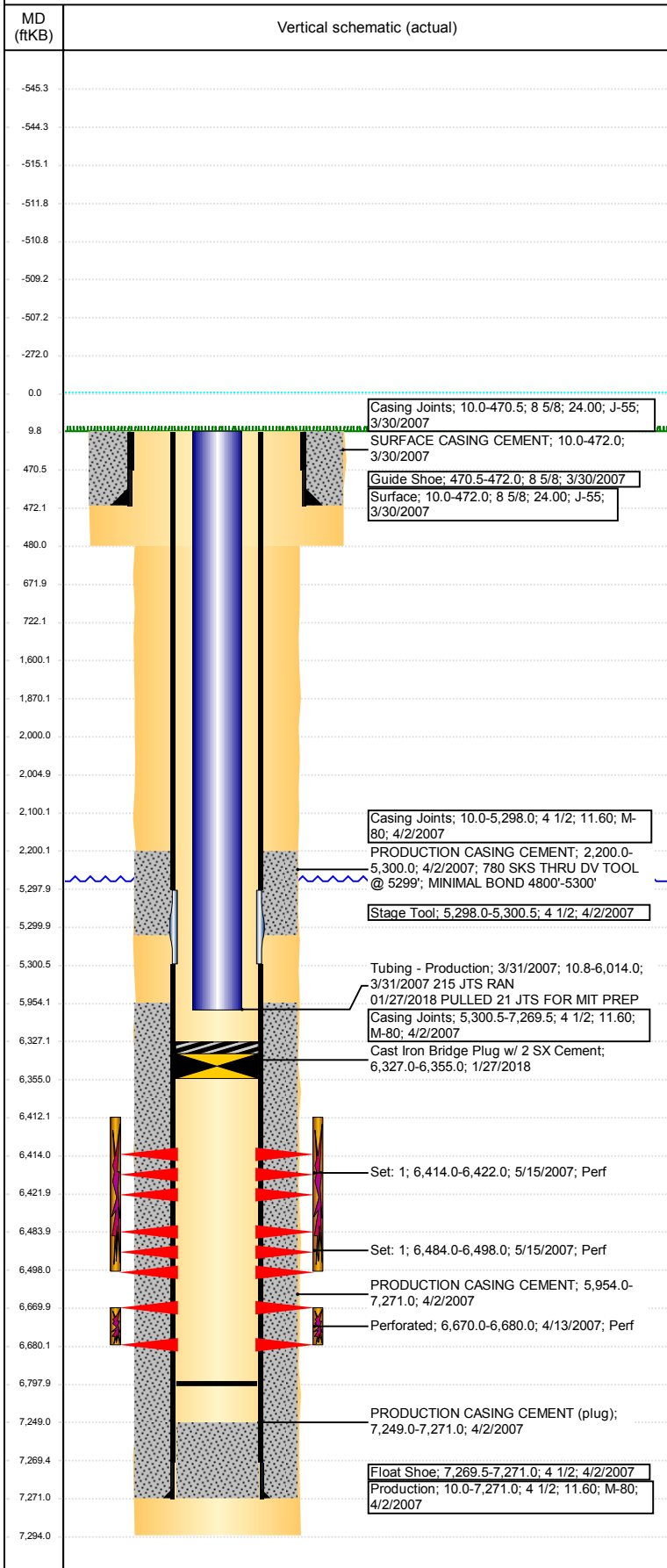
VERTICAL - ORIGINAL HOLE, 6/12/2018 6:07:50 PM



Well Header							
API 05-123-24227		Well Report Center 425662624			Well Configuration Type VERTICAL		
Original KB Elevation (ft) 4,683		KB - GL / MSL (ftKB) 10.00		Spud Date 3/29/2007		P & A Date	
Production Route Watt - C3-09				Well Production Status AB			SoRT Ignore Yes
Directions To Well HWY 34 & CR 50, E 1.5, S THROUGH ARCH, S 1-2/10, AT WINDMILL W 1, S .1 INTO - COMBO 7777 - DAYTIME ONLY				Actual Latitude (°) 40.31725161		Actual Longitude (°) -104.46407101	
Comment DV TOOL @ +/- 5299'							
Congressional Location							
Quarter 3 NE	Quarter 4 NW	Section 17	Township 4	Twnshp N/S Dir N	Range 63	Range E/W Dir W	
Rig Operator							
Rig Operator							
Plug Back Total Depths							
Date	Depth (ftKB)	Method			Com		
7/30/2007	6,798.0	TAG			C/O,PUSHED FP, & LANDED TBG		
Wellbore Sections							
Section Des		Size (in)		Act Top, MD (ftKB)		Act Btm, MD (ftKB)	
SURFACE		12 1/4		10		480	
PRODUCTION		7 7/8		480		7,294	
Zone Statuses							
Zone Name		Status Date			Status		
CODELL		1/27/2018			P&A		
NIOBRARA		1/27/2018			P&A		
Casing Strings							
Surface, 472.0ftKB							
Casing Description Surface	Run Date 3/30/2007	OD (in) 8 5/8	Wt/Len (l... 24.00	Grade J-55	Top, MD (ft... 10.0	MD (ftKB) 472.0	
Production, 7,271.0ftKB							
Casing Description Production	Run Date 4/2/2007	OD (in) 4 1/2	Wt/Len (l... 11.60	Grade M-80	Top, MD (ft... 10.0	MD (ftKB) 7,271.0	
Cement							
Des		Start Date		Top (ftKB)		Btm (ftKB)	
SURFACE CASING CEMENT		3/30/2007		10.0		472.0	
PRODUCTION CASING CEMENT		4/2/2007		2,200.0		5,300.0	
PRODUCTION CASING CEMENT		4/2/2007		5,954.0		7,271.0	
Proposed Cement							
Des				Top (ftKB)		Btm (ftKB)	
Courtesy Plug				2,005.0		2,100.0	
Courtesy Plug				1,870.0		2,000.0	
Courtesy Plug				1,600.0		2,100.0	
Shoe Plug				672.0		722.0	
Shoe Plug				10.0		672.0	
Tubing Strings							
Tubing Description Tubing - Production	Run Date 3/31/2007	String... 2 3/8	ID (in) 2.00	Wt (lb/ft) 4.70	Grade J-55	Len (ft) 6,003.20	Set De...
Tubing Components							
Item Des	OD (in)	Wt (lb/ft)	Grade	Jts	Len (ft)	Btm (ftKB)	Btm (TVD) (ftKB)
Tubing	2 3/8	4.70	J-55	194	6,002.00	6,012.8	
Seal Nipple	2 3/8				1.20	6,014.0	
Other In Hole							
Run Date	Des			OD (in)	Top (ftKB)	Btm (ftKB)	
1/27/2018	Cast Iron Bridge Plug w/ 2 SX Cement			3.99	6,327.0	6,355.0	
Proposed Other In Hole							
Des				OD (in)	Top (ftKB)	Btm (ftKB)	
Cement Retainer				4	2,000.0	2,005.0	
Logs							
Date	Type				Top, MD (ftKB)	Btm, MD (ftKB)	
4/2/2007	COMPENSATED DENSITY				2,000.0	7,274.0	
4/2/2007	INDUCTION				472.0	7,294.0	
4/13/2007	CBL/CCL/GR				2,039.0	7,244.0	

Well Name: GUTTERSEN USX CC17-03

VERTICAL - ORIGINAL HOLE, 6/12/2018 6:07:50 PM



Logs						
Date	Type	Top, MD (ftKB)	Btm, MD (ftKB)			
1/26/2018	GYRO	12.0	6,600.0			
Perforation Data						
Linked Zone	Sum of Entered Shot Total	Top (ftKB)	Btm (ftKB)	Date		
NIOBRARA, ORIGINAL HOLE	40	6,414.00	6,422.00	5/15/2007		
NIOBRARA, ORIGINAL HOLE	56	6,484.00	6,498.00	5/15/2007		
CODELL, ORIGINAL HOLE	40	6,670.00	6,680.00	4/13/2007		
Total (Sum)	136					
Proposed Perforations						
Linked Zone	Sum of En...	Top Depth (ftKB)	Btm (ftKB)	Date		
	0	2,100.00	2,100.00	9/26/2017		
Total (Sum)	0					
Job Supply Amounts						
Supply Item Des	Type	Uni...	Job Category	Total...	Total...	Total...