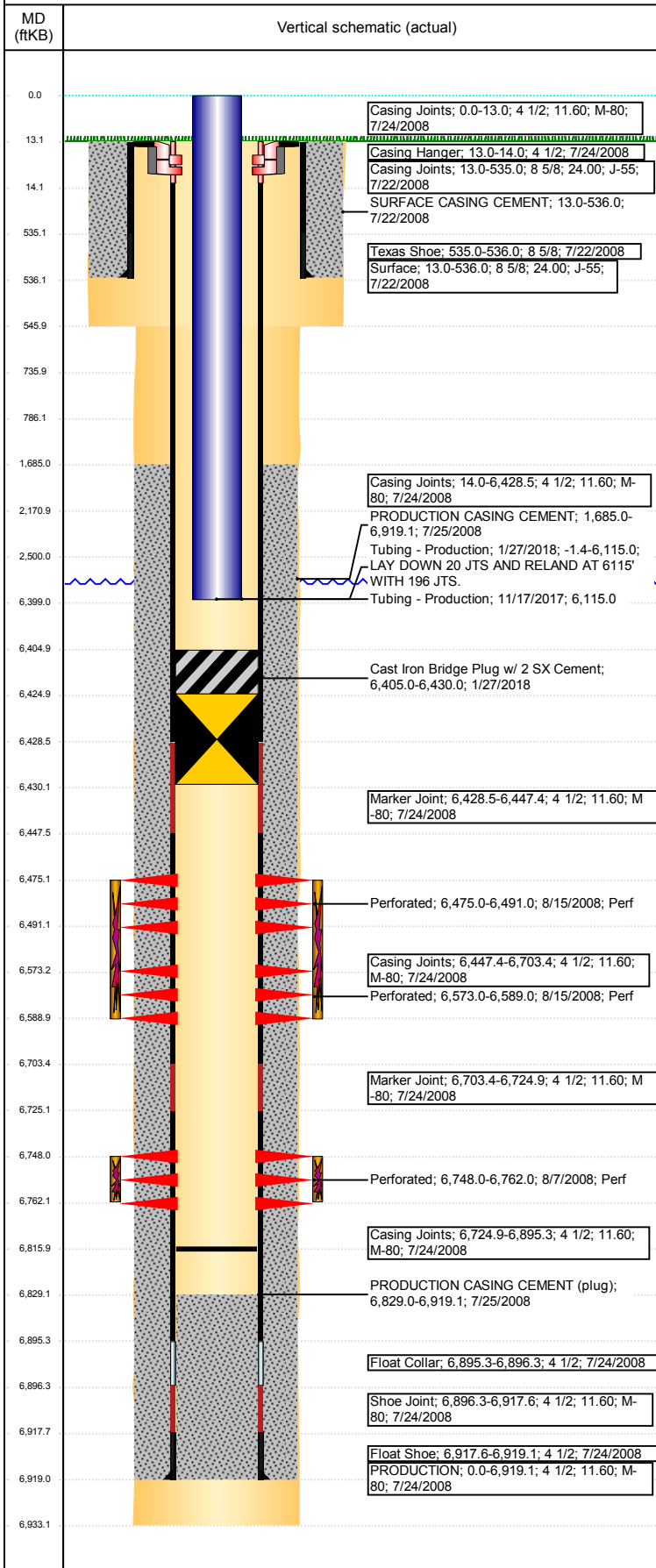


Well Name: WELLS RANCH AA21-01

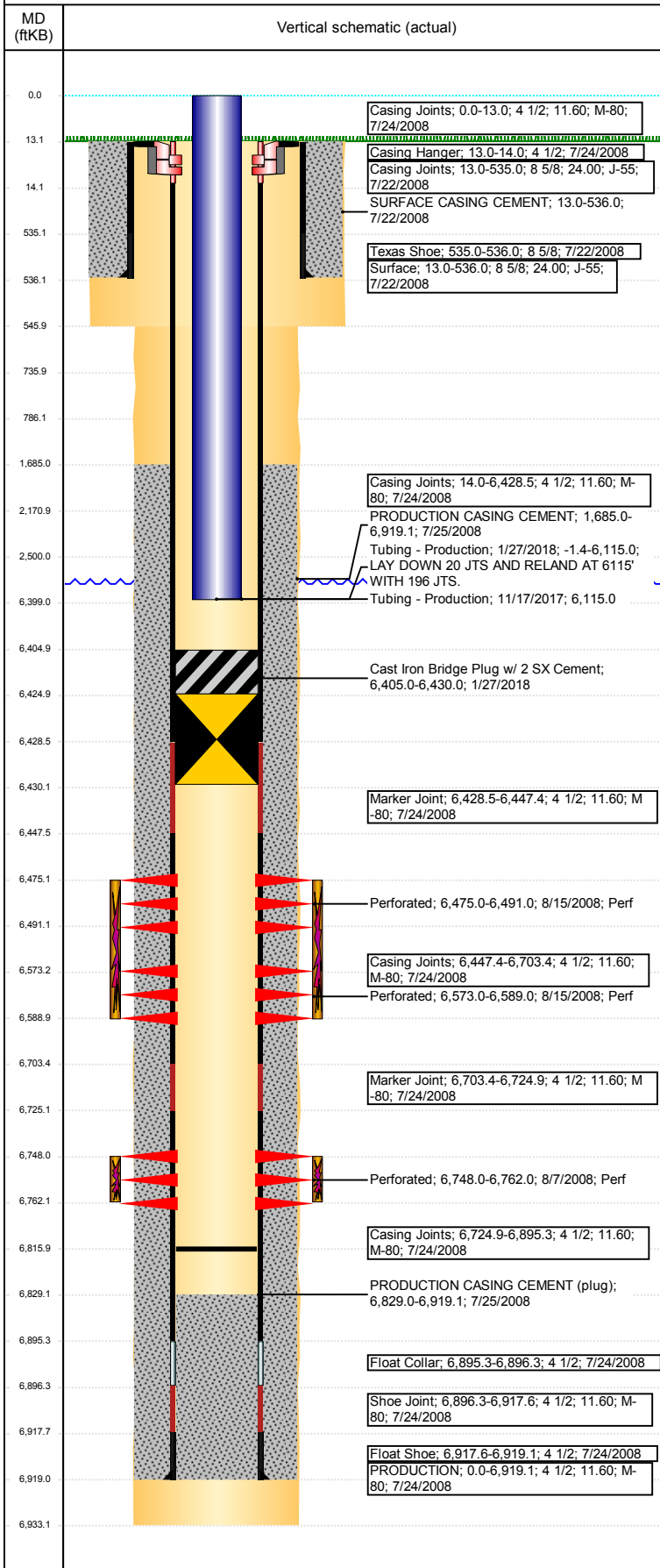
VERTICAL - ORIGINAL HOLE, 6/12/2018 2:09:48 PM



Well Header			
API	05-123-26815	Business Unit	DJ BASIN
Original KB Elevation (ft)	4,716	KB - GL / MSL (ftKB)	13.00
Spud Date	7/22/2008	District	15
Well Config	VERTICAL		
P & A Date			
Comment			
Directions To Well			
WCR 67 & WCR 68, E 0.2, S 0.3, W 0.5, S 0.2 INTO LOCATION.			
Congressional Location			
Quarter 3	Quarter 4	Section	Township
NE	NE	21	6
Twntshp N/S Dir	Range	Range E/W Dir	
N	63	W	
Bottom Hole Location			
North-South Distance (ft)	From N or S Line	East-West Distance (ft)	From E or W Line
686.0	FNL	586.0	FEL
Well Back Total Depths			
Date	Depth (ftKB)	Method	Com
7/25/2008	6,896.3	CASING TALLY	
8/5/2008	6,829.0	CASED HOLE LOG	CBL DEPTH LOGGER
9/22/2008	6,826.0	TAG	DRILL CIFTP W/ SHOE AND CHASE DOWN TO 68...
2/12/2009	6,826.0	TAG	CLEAN OUT SAND W/ 219 JTS
3/5/2014	6,816.0	TUBING TALLY	
Wellbore Sections			
Section Des	Size (in)	Act Top, MD (ftKB)	Act Btm, MD (ftKB)
SURFACE	12 1/4	13	546
PRODUCTION	7 7/8	546	6,933
Zone Statuses			
Zone Name	Status Date	Status	Fluid Type
CODELL	8/20/2008	PR	
CODELL	1/27/2018	TA	
NIOBRARA	8/20/2008	PR	
NIOBRARA	1/27/2018	TA	
Casing Strings			
Surface, 536.0ftKB			
Casing Description	Run Date	OD (in)	Wt/Len (L...)
Surface	7/22/2008	8 5/8	24.00
Grade	J-55	Top, MD (ft...)	MD (ftKB)
		13.0	536.0
PRODUCTION, 6,919.1ftKB			
Casing Description	Run Date	OD (in)	Wt/Len (L...)
PRODUCTION	7/24/2008	4 1/2	11.60
Grade	M-80	Top, MD (ft...)	MD (ftKB)
		0.0	6,919.1
Cement			
Description	Top Depth (ftKB)	Bottom Depth (ftKB)	
SURFACE CASING CEMENT	13.0	536.0	
PRODUCTION CASING CEMENT	1,685.0	6,919.1	
PA Plug	6,399.0	6,425.0	
PA Plug	2,171.0	2,500.0	
PA Plug	736.0	786.0	
PA Plug	13.1	736.0	
Tubing Strings			
Tubing Description	Run Date	String...	ID (in)
Tubing - Production	9/23/2008	2 3/8	2.00
Wt (lb/ft)	Grade	Len (ft)	Set De...
4.70	J-55	6,726.45	
Tubing Components			
Item Des	OD (in)	Wt (lb/ft)	Grade
Tubing	2 3/8	4.70	J-55
Jts	Len (ft)	Btm (ftKB)	Btm (TVD) (ftKB)
216	6,724.95	6,735.9	
Pump Seating	2 3/8		
Nipple		1.10	6,737.0
Notched collar	3 1/16		
		0.40	6,737.4
Tubing Description	Run Date	String...	ID (in)
Tubing - Production	2/12/2009	2 3/8	2.00
Wt (lb/ft)	Grade	Len (ft)	Set De...
4.70	J-55	6,738.50	
Tubing Components			
Item Des	OD (in)	Wt (lb/ft)	Grade
Tubing	2 3/8	4.70	J-55
Jts	Len (ft)	Btm (ftKB)	Btm (TVD) (ftKB)
216	6,737.00	6,735.5	

Well Name: WELLS RANCH AA21-01

VERTICAL - ORIGINAL HOLE, 6/12/2018 2:09:48 PM



Tubing Components							
Item Des	OD (in)	Wt (lb/ft)	Grade	Jts	Len (ft)	Btm (ftKB)	Btm (TVD) (ftKB)
Pump Seating Nipple	2 3/8	0.00	X	1	1.10	6,736.6	
Notched collar	3 1/16	0.00	X	1	0.40	6,737.0	
Tubing Description	Run Date	String...	ID (in)	Wt (lb/ft)	Grade	Len (ft)	Set De...
Tubing - Production	11/17/2017						
Tubing Description	Run Date	String...	ID (in)	Wt (lb/ft)	Grade	Len (ft)	Set De...
Tubing - Production	1/27/2018	2 3/8	2.00	4.70	J-55	6,116.40	

Tubing Components							
Item Des	OD (in)	Wt (lb/ft)	Grade	Jts	Len (ft)	Btm (ftKB)	Btm (TVD) (ftKB)
EUE 8rd Tubing	2 3/8	4.70	J-55	196	6,115.00	6,113.6	
Pump Seating Nipple	2 3/8	1.10	X	1	1.10	6,114.7	
Notched collar	2 3/8	0.00	X	1	0.30	6,115.0	

Other In Hole				
Run Date	Des	OD (in)	Top (ftKB)	Btm (ftKB)
3/4/2014	Cast Iron Bridge Plug	4	6,425.0	6,430.0
1/27/2018	Cast Iron Bridge Plug w/ 2 SX Cement	4	6,405.0	6,430.0

Logs			
Date	Type	Top, MD (ftKB)	Btm, MD (ftKB)
7/24/2008	Caliper/Comp. Density/Neutron/GR/SP/ML	2,700.0	6,924.0
7/24/2008	DIL/GR/SP/Caliper	536.0	6,924.0
8/5/2008	CBL/CCL/GR	1,547.0	6,828.0
3/27/2013	GYRO	13.0	6,700.0

Perforation Data					
Linked Zone	Bnch/St g	Sum of Entered Shot Total	Top (ftKB)	Btm (ftKB)	Date
NIOBRARA, ORIGINAL HOLE	A	64	6,475.00	6,491.00	8/15/2008
NIOBRARA, ORIGINAL HOLE	B	64	6,573.00	6,589.00	8/15/2008
CODELL, ORIGINAL HOLE		56	6,748.00	6,762.00	8/7/2008
Total (Sum)		184			

Stimulation Intervals		
Start Date	Primary Job Type	
8/15/2008	DRILLING/COMPLETION - ORIGINAL	
Technical Result	Tech Result Details	Tech Result Note
Success	According to Plan	
Comment (CODELL): PUMPED JOB AT 50 BPM.		
Start Date	Primary Job Type	
8/15/2008	DRILLING/COMPLETION - ORIGINAL	
Technical Result	Tech Result Details	Tech Result Note
Success	According to Plan	
Comment (NIOBRARA): TOTALIZED PROPPANT 8.3% SHORT, ABOUT 8,000 LBS STUCK BECAUSE IT WAS WET INSIDE THE MOUNTAIN MOVER, INCLUDING THAT SAND WOULD MAKE SAND DEVIANCE 5.6%. NO OTHER ISSUES TO REPORT.		