

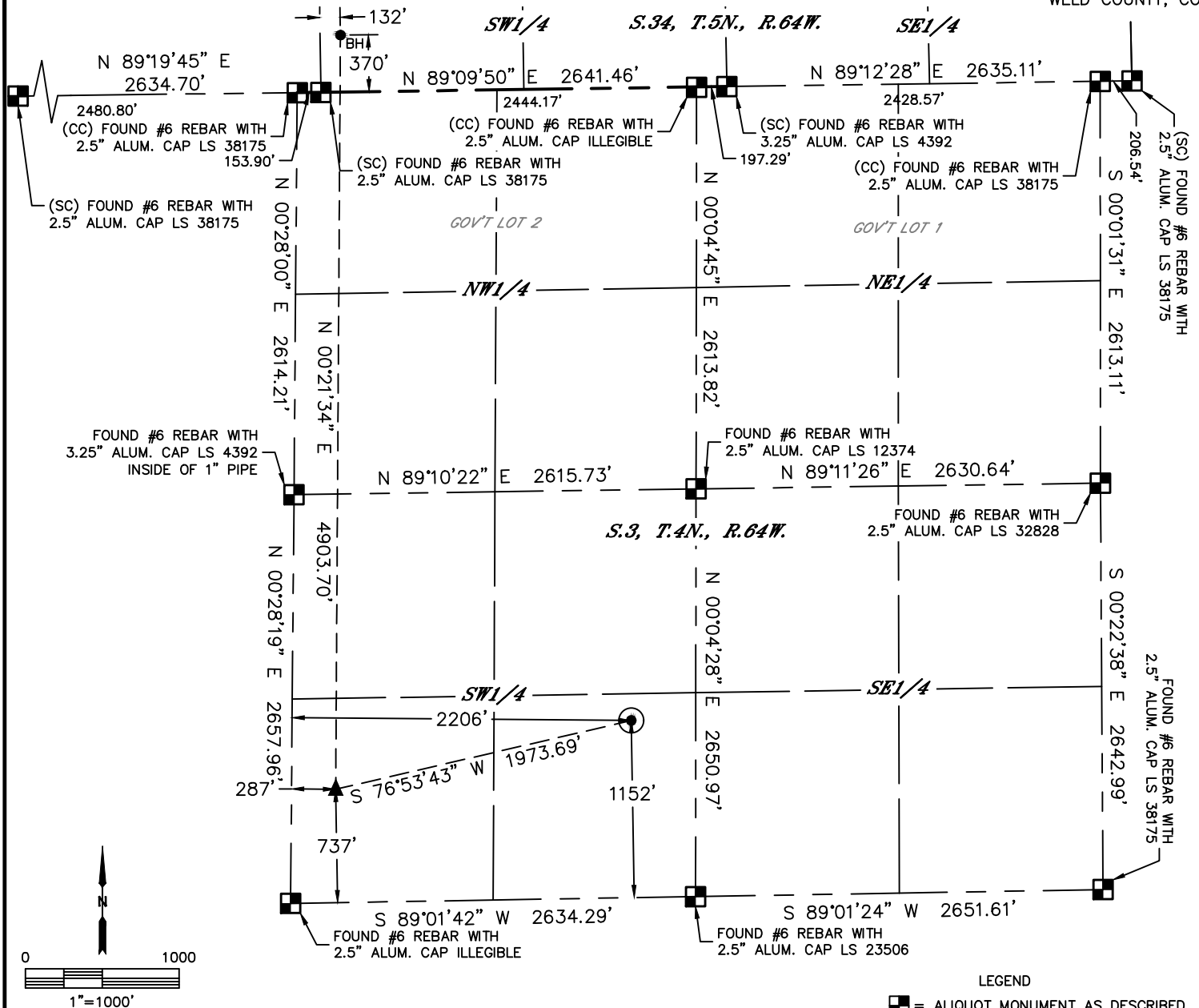


Lat40°, Inc. 6250 W. 10th Street, Unit 2, Greeley, CO 970-515-5294

WELL LOCATION CERTIFICATE

POPHAM 2N

SECTION: 3
TOWNSHIP: 4N
RANGE: 64W
6TH. P.M.
WELD COUNTY, CO



CLIENT: PDC ENERGY, INC.				LANDMAN: JEFF HINDMARSH			
INSTRUMENT OPERATOR: JAKE STILLE				SURVEY DATE: 7/25/2017		SURFACE USE: PASTURE	
SHL FOOTAGE	SHL LAT°	SHL LONG°	SHL PDOP	SHL ELEV (FT.)	SHL 1/4/1/4	SHL S-T-R	
1152	FSL	2206	FWL	40.33729	-104.53805	1.8	4662
						SESW	3-4-64

BHL FOOTAGE	BHL LAT°	BHL LONG°	BHL S-T-R	EP LAT°	EP LONG°	EP S-T-R
370	FSL	132	FWL	40.34957	-104.54466	34-5-64
				40.33611	-104.54496	3-4-64

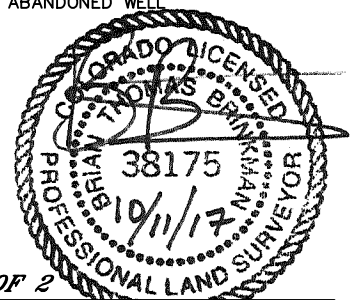
Distance to nearest unit
boundary: 737'

NEAREST CULTURAL ITEMS	
BUILDING	±773' NW
BUILDING UNIT	±1120' SE
HIGH OCCUPANCY BUILDING UNIT	5280'+
DESIGNATED OUTSIDE ACTIVITY AREA	5280'+
PUBLIC ROAD (COUNTY ROAD 48)	±1139' S
ABOVE GROUND UTILITY	±986' SE
RAILROAD	5280'+
PROPERTY LINE	±420' E

NOTE:

- 1) Bearings shown are Grid Bearings of the Colorado State Plane Coordinate System, North Zone, North American Datum 1983. The lineal dimensions as contained herein are based upon the "U.S. Survey Foot."
- 2) Distances to section lines measured at 90 degrees from said section lines.
- 3) Ground elevations are based on an observed GPS elevation (NAVD 1988 DATUM).
- 4) Latitude and Longitude shown are (NAD 83 DATUM).
- 5) IMPROVEMENTS: See LOCATION DRAWING for all visible improvements within 500' of oil and gas location.
- 6) This map does not represent a boundary survey.

- LEGEND
- = ALIQUOT MONUMENT AS DESCRIBED
 - = CALCULATED POSITION
 - = SURFACE HOLE LOCATION (SHL)
 - ▲ = ENTRY POINT LOCATION (EP)
 - BH = BOTTOM HOLE LOCATION (BHL)
 - ⊕ = EXISTING WELL
 - ⊙ = ABANDONED WELL



SHEET 1 OF 2

Brian T. Brinkman—On behalf of Lat40°, Inc.
Colorado Licensed Professional Land Surveyor No. 38175
DATE: 10/11/2017
PROJECT#: 2015075

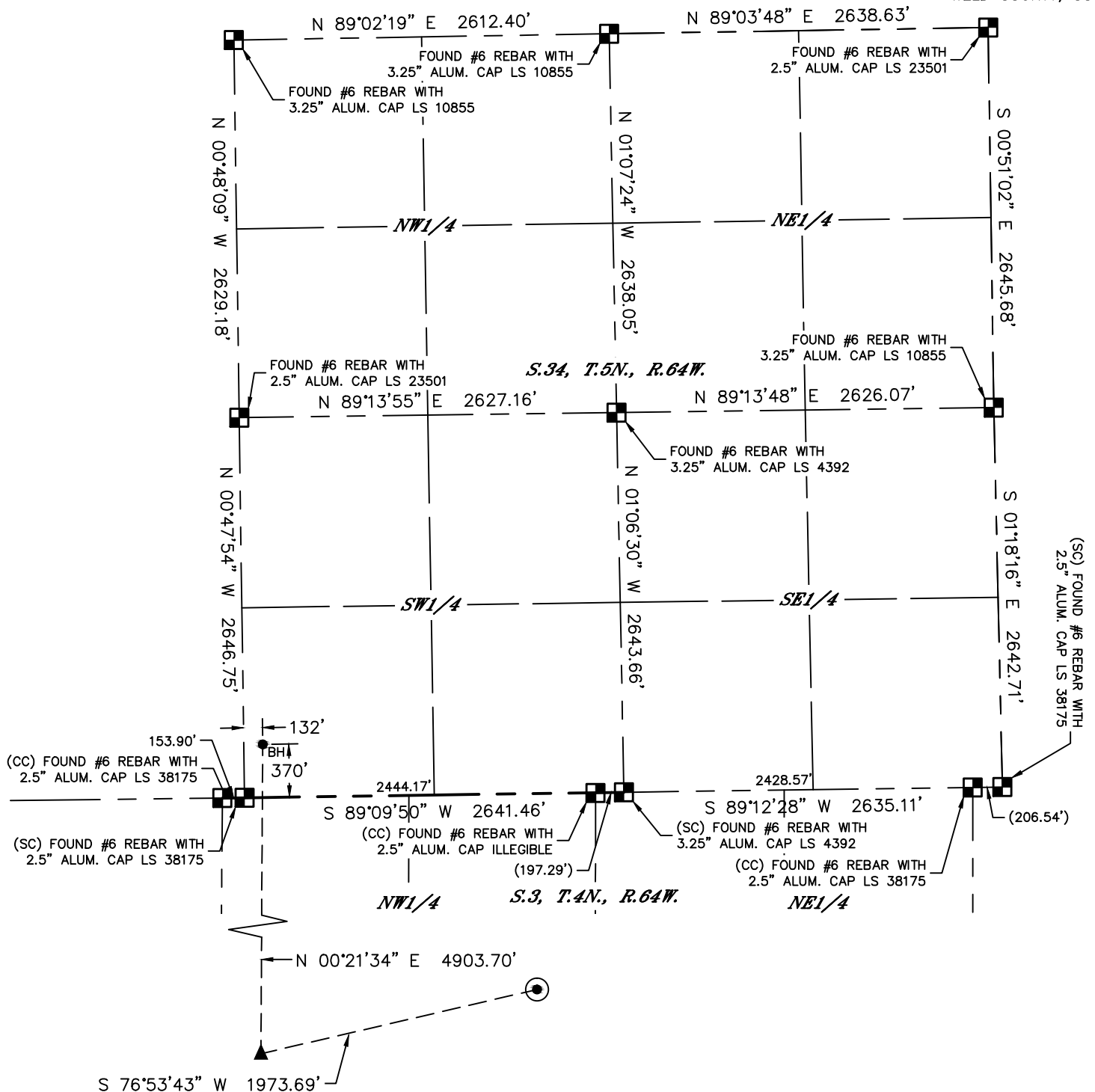


Lat40°, Inc. 6250 W. 10th Street, Unit 2, Greeley, CO 970-515-5294

WELL LOCATION CERTIFICATE

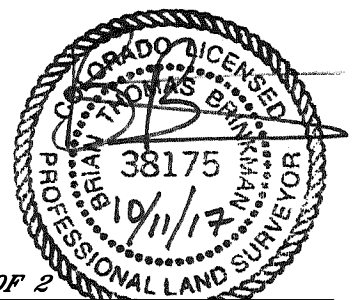
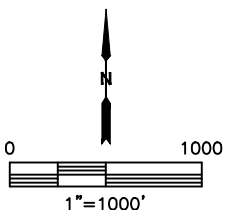
POPHAM 2N

SECTION: 3
TOWNSHIP: 4N
RANGE: 64W
6TH. P.M.
WELD COUNTY, CO



LEGEND

- = ALIQUOT MONUMENT AS DESCRIBED
- = CALCULATED POSITION
- = SURFACE HOLE LOCATION (SHL)
- ▲ = ENTRY POINT LOCATION (EP)
- = BOTTOM HOLE LOCATION (BHL)
- ⊙ = EXISTING WELL
- ⊙ = ABANDONED WELL



SHEET 2 OF 2

Brian T. Brinkman—On behalf of Lat40°, Inc.
Colorado Licensed Professional Land Surveyor No. 38175
DATE: 10/11/2017
PROJECT#: 2015075