



SRC ENERGY

P&A Wellbore Diagram

Operator: SRC Energy	Operator #: 10311
Well Name: Aufrecht N 2-16	Location: Weld, CO
API: 05-123-26503	Legal: SESE 2-5N-67W

Current

Proposed

Deepest Water Well (1 mile): 800'

Well History

Spud Date: 02/15/2008

Perfs: Codell: 7182' - 7204'

Bradenhead History

Date of last test: N/A

Bradenhead pressure: N/A

Plugging Procedure

Set CIBP @ 7107'

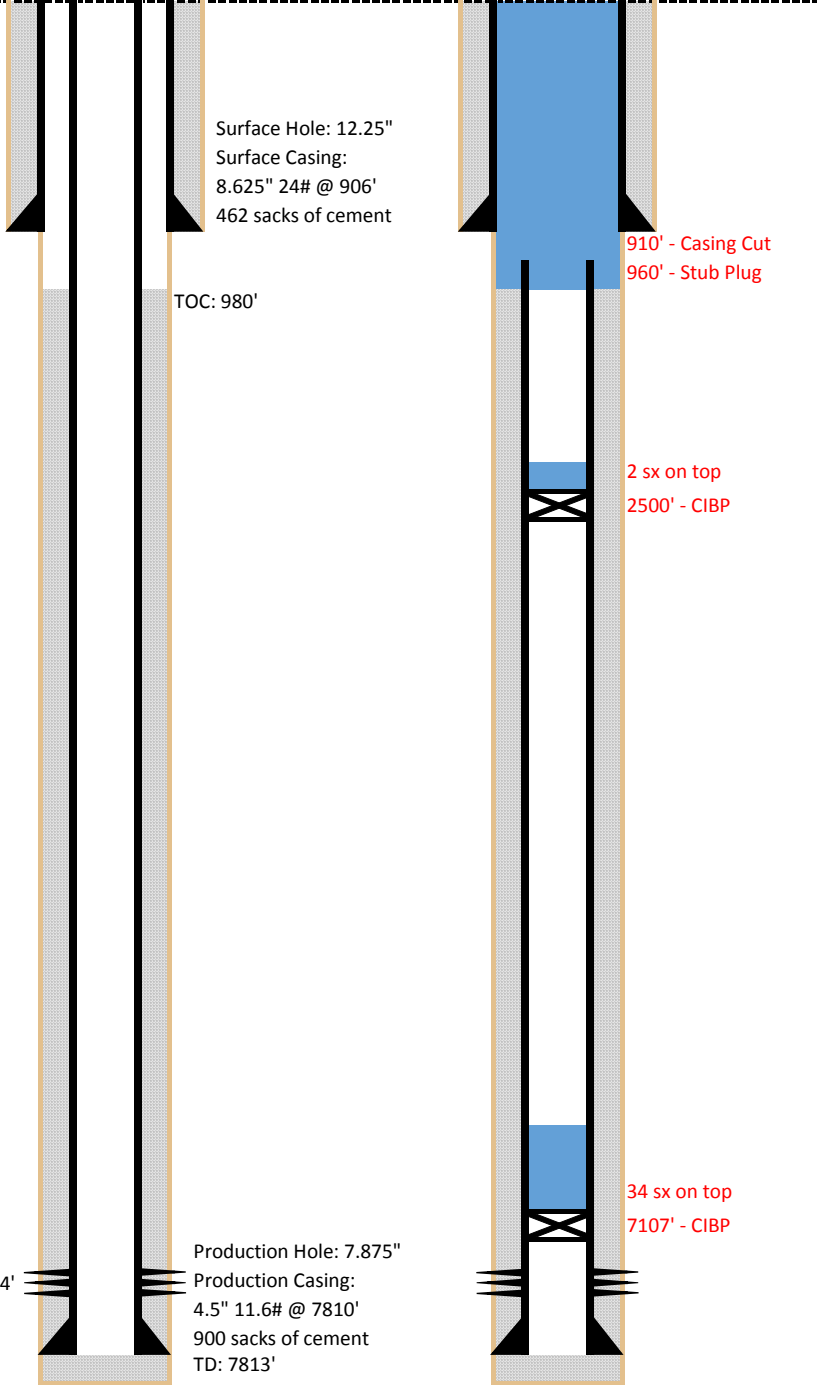
Set 34 sx on top of CIBP (442' plug)

Set CIBP @ 2500'

Dump bail 2 sx on top of CIBP

Cut casing @ 910'

Pump 298 sx @ 960' to surface



Formations

Upper Pierre (Btm)	1330'
Sussex (Top)	4332'
Shannon (Top)	4686'
Niobrara (Top)	6865'
Codell (Top)	7192'
J-Sand (Top)	7663'

Legend

Existing Cement

Cement Pumped

CIBP

CIBR