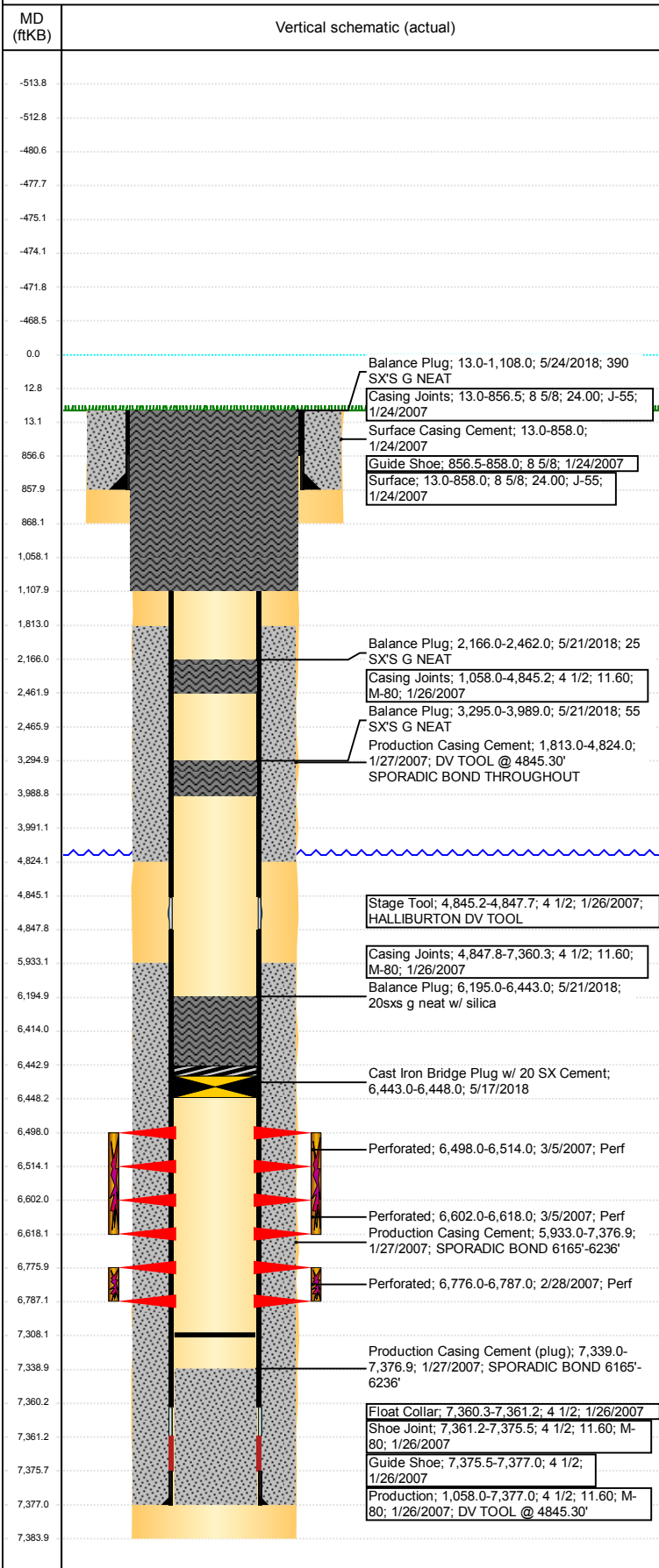


Well Name: LARSON USX AA19-05

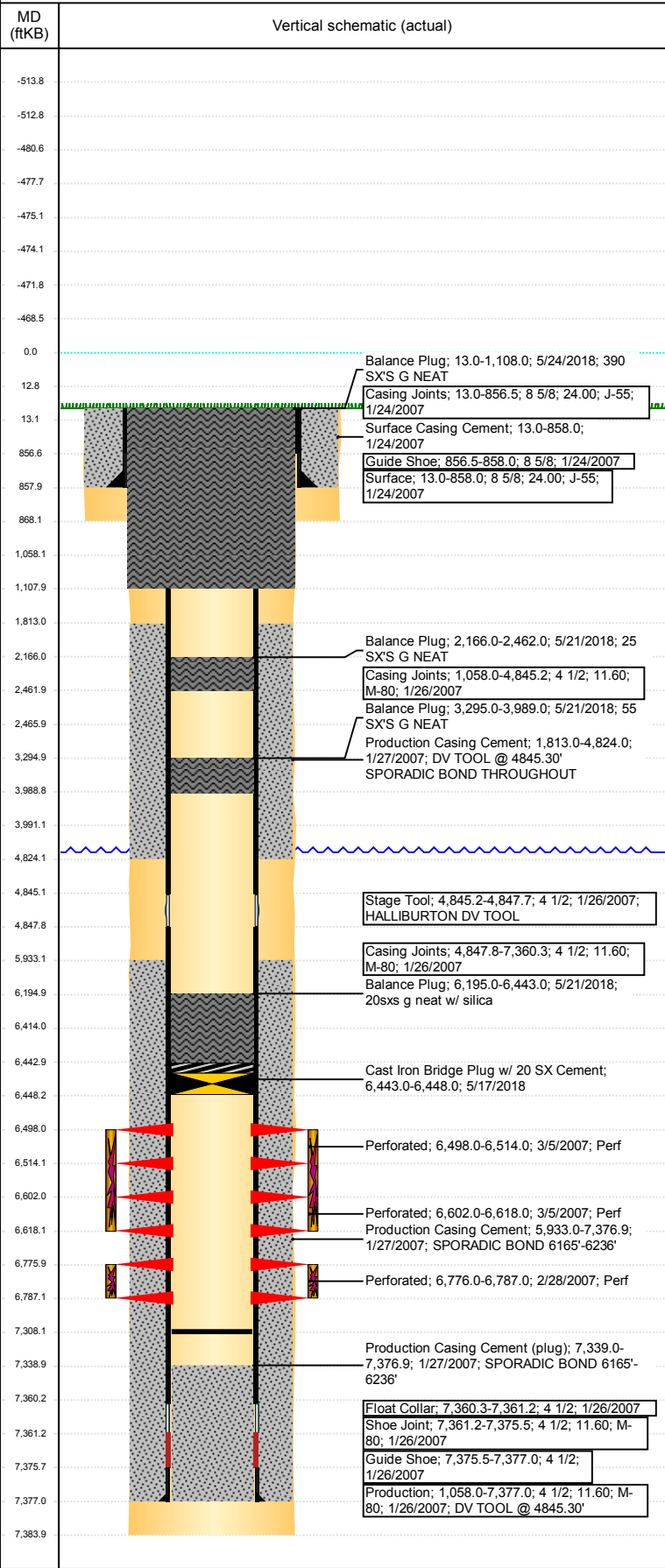
VERTICAL - ORIGINAL HOLE, 6/5/2018 4:30:22 PM



Well Header								
API	05-123-24331		Well Report Center	424423426		Well Configuration Type	VERTICAL	
Original KB Elevation (ft)	4,662	KB - GL / MSL (ftKB)	13.00	Spud Date	1/23/2007	P & A Date	5/23/2018	
Production Route	Watt - B3-03		Well Production Status	PA		SoRT Ignore	Yes	
Directions To Well	RDS 61 & 68, 3/10 S, E INTO			Actual Latitude (°)	40.47337121		Actual Longitude (°)	-104.48676036
Comment								
Congressional Location								
Quarter 3	Quarter 4	Section	Township	TwNS Dir	Range	Range E/W Dir		
SW	NW	19	6	N	63	W		
Rig Operator								
Rig Operator								
JIMMY MORO , OPERATOR								
Plug Back Total Depths								
Date	Depth (ftKB)	Method	Com					
11/16/2007	7,308.0	TAG	DRILL PLUG AND PUSH TO 7308'					
Wellbore Sections								
Section Des	Size (in)	Act Top, MD (ftKB)	Act Btm, MD (ftKB)					
SURFACE	12 1/4	13	868					
PRODUCTION	7 7/8	868	7,384					
Zone Statuses								
Zone Name	Status Date	Status						
NIOBRARA	5/17/2018	P&A						
CODELL	5/17/2018	P&A						
Casing Strings								
Surface, 858.0ftKB								
Casing Description	Run Date	OD (in)	Wt/Len (l...)	Grade	Top, MD (ft...)	MD (ftKB)		
Surface	1/24/2007	8 5/8	24.00	J-55	13.0	858.0		
Production, 7,377.0ftKB								
Casing Description	Run Date	OD (in)	Wt/Len (l...)	Grade	Top, MD (ft...)	MD (ftKB)		
Production	1/26/2007	4 1/2	11.60	M-80	13.0	7,377.0		
Cement								
Des	Start Date	Top (ftKB)	Btm (ftKB)					
Surface Casing Cement	1/24/2007	13.0	858.0					
Production Casing Cement	1/27/2007	1,813.0	4,824.0					
Production Casing Cement	1/27/2007	5,933.0	7,377.0					
Balance Plug	5/21/2018	6,195.0	6,443.0					
Balance Plug	5/21/2018	3,295.0	3,989.0					
Balance Plug	5/21/2018	2,166.0	2,462.0					
Balance Plug	5/24/2018	13.0	1,108.0					
Proposed Cement								
Des	Top (ftKB)	Btm (ftKB)						
Dump Bail	6,414.0	6,443.0						
Balance Plug	3,295.0	3,991.0						
Balance Plug	2,166.0	2,466.0						
Shoe Plug	13.0	1,058.0						
Shoe Plug	1,058.0	1,108.0						
Tubing Strings								
Tubing Description	Run Date	String...	ID (in)	Wt (lb/ft)	Grade	Len (ft)	Set De...	
Tubing - Production	11/16/2007	2 3/8	2.00	4.70	J-55	6,754.10		
Tubing Components								
Item Des	OD (in)	Wt (lb/ft)	Grade	Jts	Len (ft)	Btm (ftKB)	Btm (TVD) (ftKB)	
PUP JOINT	2 3/8			2	20.00	31.0		
TUBING	2 3/8	4.70	J-55	221	6,733.00	6,764.0		
SEATING NIPPLE	2 3/8			1	1.00	6,765.0		
BLADE BIT COLLAR	3 7/8			1	0.10	6,765.1		
Other In Hole								
Run Date	Des	OD (in)	Top (ftKB)	Btm (ftKB)				
5/17/2018	Cast Iron Bridge Plug w/ 20 SX Cement	3.99	6,443.0	6,448.0				

Well Name: LARSON USX AA19-05

VERTICAL - ORIGINAL HOLE, 6/5/2018 4:30:23 PM



Proposed Other In Hole			
Des	OD (in)	Top (ftKB)	Btm (ftKB)
Cast Iron Bridge Plug	3.99	6,443.0	6,448.0

Logs			
Date	Type	Top, MD (ftKB)	Btm, MD (ftKB)
1/26/2007	COMPENSATED DENSITY	2,000.0	7,359.0
1/26/2007	INDUCTION	858.0	7,379.0
2/28/2007	CBL/CCL/GR	1,684.0	7,337.0
10/20/2015	GYRO	0.0	6,700.0

Perforation Data				
Linked Zone	Sum of Entered Shot Total	Top (ftKB)	Btm (ftKB)	Date
NIOBRARA, ORIGINAL HOLE	64	6,498.00	6,514.00	3/5/2007
NIOBRARA, ORIGINAL HOLE	64	6,602.00	6,618.00	3/5/2007
CODELL, ORIGINAL HOLE	44	6,776.00	6,787.00	2/28/2007
Total (Sum)	172			

Job Supply Amounts						
Supply Item Des	Type	Uni...	Job Category	Total ...	Total ...	Total ...

Daily Cost Breakdown by Category		
Sum of Field Est...	Cost Description	Note
6,200.00	Downhole	
3,750.00	Downhole	Supervisor
19,750.00	Downhole	PULLING UNIT
1,500.00	Downhole	WATER DELIVERY
3,323.00	Downhole	JET CUT
1,500.00	Downhole	WATER AND HYDRO VAC
2,123.00	Downhole	CIBP
2,232.00	Downhole	CSG SPEAR
5,865.00	Downhole	CEMENT TO CREW
46,243.00		