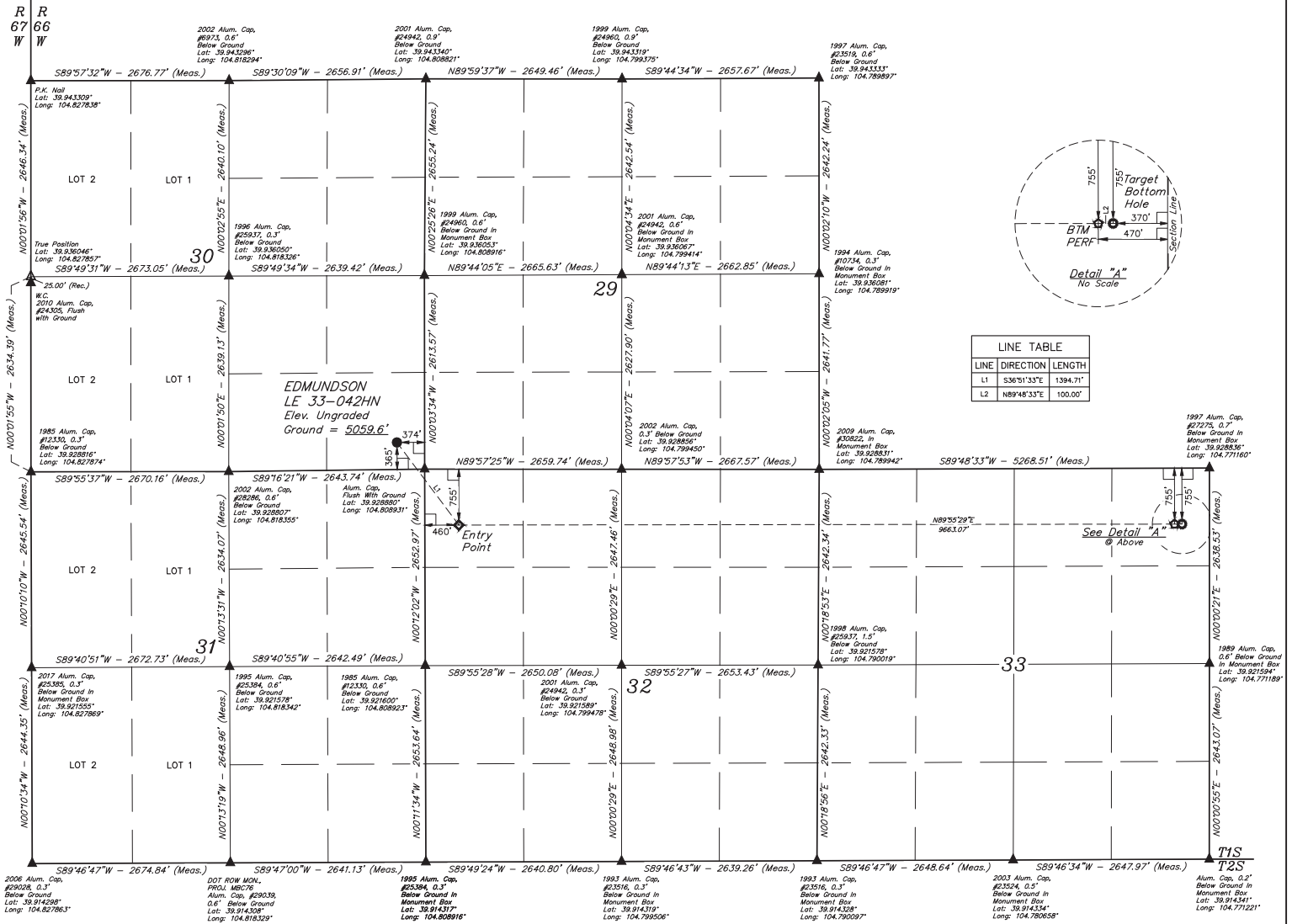


LEGEND:

- 90° SYMBOL
- PROPOSED WELLHEAD
- ENTRY POINT
- BTM PERF.
- TARGET BOTTOM HOLE
- SECTION CORNERS LOCATED (NAD 83)
- SECTION CORNERS RE-ESTABLISHED (Not Set on Ground.) (NAD 83)

T1S, R66W, 6th P.M.



LINE TABLE		
LINE	DIRECTION	LENGTH
L1	S36°51'33"E	1394.71'
L2	N89°48'33"E	100.00'



NAD 83 (SURFACE LOCATION)	NAD 83 (ENTRY POINT)	NAD 83 (BTM PERF.)	NAD 83 (TARGET BOTTOM HOLE)
2006 Alum. Cap. #29028, 0.3' Below Ground in Monument Box Lot: 39.914298° Long: 104.827863°	2002 Alum. Cap. #29028, 0.3' Below Ground in Monument Box Lot: 39.914298° Long: 104.827863°	2002 Alum. Cap. #29028, 0.3' Below Ground in Monument Box Lot: 39.914298° Long: 104.827863°	2002 Alum. Cap. #29028, 0.3' Below Ground in Monument Box Lot: 39.914298° Long: 104.827863°
2002 Alum. Cap. #29028, 0.3' Below Ground in Monument Box Lot: 39.914298° Long: 104.827863°	2002 Alum. Cap. #29028, 0.3' Below Ground in Monument Box Lot: 39.914298° Long: 104.827863°	2002 Alum. Cap. #29028, 0.3' Below Ground in Monument Box Lot: 39.914298° Long: 104.827863°	2002 Alum. Cap. #29028, 0.3' Below Ground in Monument Box Lot: 39.914298° Long: 104.827863°
2002 Alum. Cap. #29028, 0.3' Below Ground in Monument Box Lot: 39.914298° Long: 104.827863°	2002 Alum. Cap. #29028, 0.3' Below Ground in Monument Box Lot: 39.914298° Long: 104.827863°	2002 Alum. Cap. #29028, 0.3' Below Ground in Monument Box Lot: 39.914298° Long: 104.827863°	2002 Alum. Cap. #29028, 0.3' Below Ground in Monument Box Lot: 39.914298° Long: 104.827863°

BASIS OF BEARINGS
BASIS OF ELEVATION
USGS COOPERATIVE BASE NETWORK CONTROL STATION, DESIGNATION "R 53 5026". NGS DATA SHEET LISTS THE NAVD 88 ELEVATION AS BEING 5028 FEET.

UELS, LLC
Corporate Office * 85 South 200 East
Vernal, UT 84078 * (435) 789-1017



CERTIFICATE OF REGISTRATION
THIS IS TO CERTIFY THAT THE ABOVE NAMED SURVEYOR HAS BEEN REGISTERED BY THE BOARD OF LAND SURVEYORS OF THE STATE OF COLORADO AND THAT THE SAME ARE TRUE AND CORRECT TO THE BEST OF HIS KNOWLEDGE AND BELIEF.

REV: 3 05-03-18 K.B. (BP ADD, COMPANY NAME, EP & TBH CHANGE)

GREAT WESTERN OPERATING COMPANY
EDMUNDSON LE 33-042HN
SE 1/4 SE 1/4, SECTION 30, T1S, R66W, 6th P.M.
ADAMS COUNTY, COLORADO

SURVEYED BY: GREG WEIMER, J.C. 03-28-17 SCALE
DRAWN BY: D.COX 04-03-17 1" = 1000'
WELL LOCATION PLAT