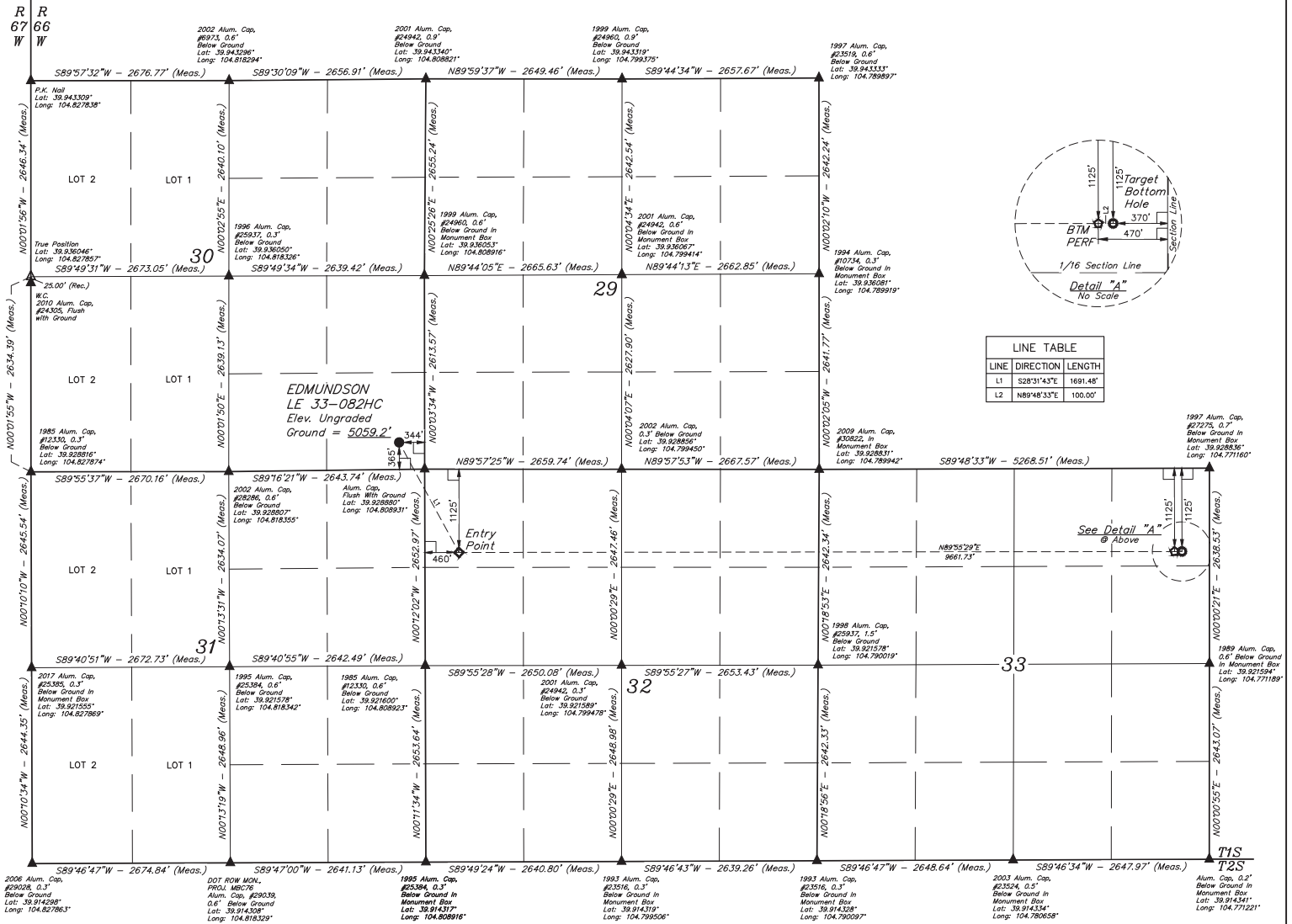


# LEGEND:

- 90° SYMBOL
- PROPOSED WELLHEAD
- ENTRY POINT
- BTM PERF.
- TARGET BOTTOM HOLE
- SECTION CORNERS LOCATED (NAD 83)
- SECTION CORNERS RE-ESTABLISHED (Not Set on Ground.) (NAD 83)

T1S, R66W, 6th P.M.



2006 Alum. Cap. #29028, 0.3' Below Ground in Monument Box Lat: 39.914298° Long: 104.827863°	2017 Alum. Cap. #25385, 0.3' Below Ground in Monument Box Lat: 39.921555° Long: 104.827869°	1985 Alum. Cap. #25394, 0.6' Below Ground Lat: 39.921578° Long: 104.818342°	2002 Alum. Cap. #28286, 0.6' Below Ground Lat: 39.920807° Long: 104.818355°	1985 Alum. Cap. #25394, 0.6' Below Ground Lat: 39.921578° Long: 104.818342°	1985 Alum. Cap. #25394, 0.6' Below Ground Lat: 39.921578° Long: 104.818342°	2001 Alum. Cap. #24942, 0.3' Below Ground in Monument Box Lat: 39.921589° Long: 104.799478°	1993 Alum. Cap. #23516, 0.3' Below Ground in Monument Box Lat: 39.914319° Long: 104.796206°	1993 Alum. Cap. #23516, 0.3' Below Ground in Monument Box Lat: 39.914319° Long: 104.796206°	1993 Alum. Cap. #23516, 0.3' Below Ground in Monument Box Lat: 39.914319° Long: 104.796206°	2003 Alum. Cap. #23524, 0.5' Below Ground in Monument Box Lat: 39.914334° Long: 104.780658°	Alum. Cap. 0.2' Below Ground in Monument Box Lat: 39.914341° Long: 104.771221°
---	---	---	---	---	---	---	---	---	---	---	---