

FINISHED GRADE ELEVATION = 5869.9'

- NOTES:**
- Round corners at 35' radius or as needed.
 - Construct diversion ditches as needed.
 - Contours shown at 2' intervals.
 - Cut/Fill slopes 3:1 (Typ.).



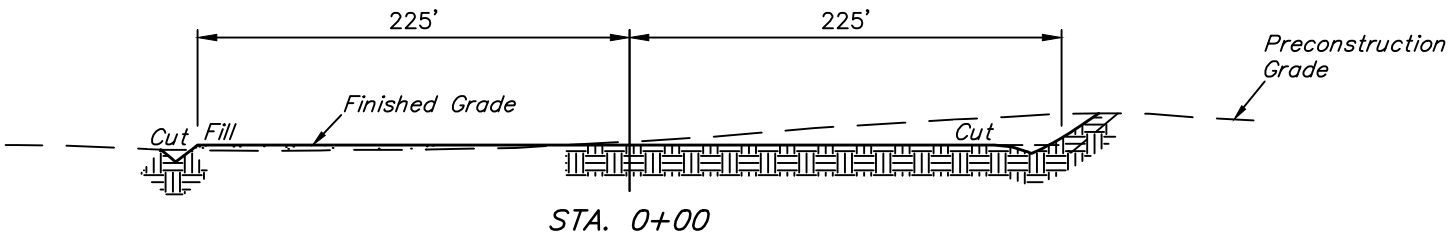
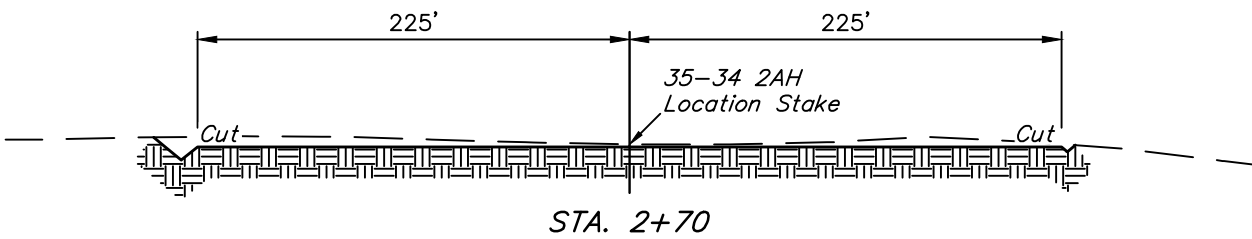
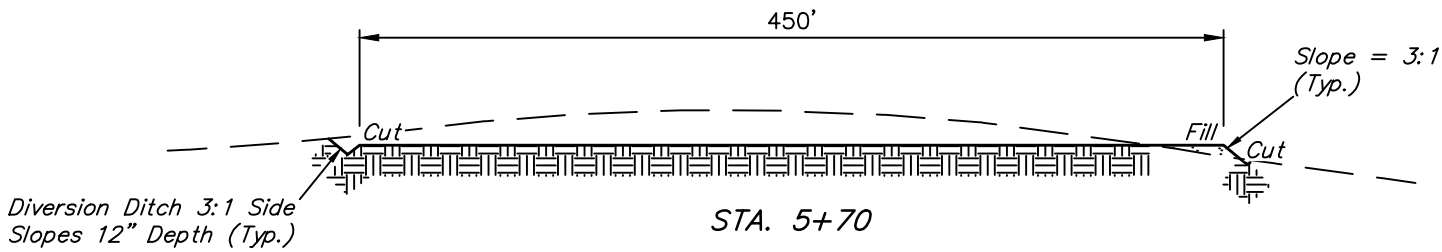
UELS, LLC
Corporate Office * 85 South 200 East
Vernal, UT 84078 * (435) 789-1017

ConocoPhillips Company

STATE BIERSTADT #4-65 35-34 2AH, 2BH, 2CH & 2DH
SE 1/4 NE 1/4, SECTION 35, T4S, R65W, 6th P.M.
ARAPAHOE COUNTY, COLORADO

SURVEYED BY	GREG WEIMER, O.R.	02-27-18	SCALE
DRAWN BY	F.R.	03-14-18	1" = 100'
CONSTRUCTION LAYOUT		FIGURE #1	

1" = 40'
X-Section
Scale
1" = 100'



APPROXIMATE EARTHWORK QUANTITIES	
(6") TOPSOIL STRIPPING	5,450 Cu. Yds.
REMAINING LOCATION	21,590 Cu. Yds.
TOTAL CUT	27,040 Cu. Yds.
FILL	1,200 Cu. Yds.
EXCESS MATERIAL	25,840 Cu. Yds.
TOPSOIL	5,450 Cu. Yds.
EXCESS UNBALANCE (After Interim Rehabilitation)	20,390 Cu. Yds.

APPROXIMATE SURFACE DISTURBANCE AREAS		
	DISTANCE	ACRES
WELL SITE DISTURBANCE	NA	±12.769
TOTAL SURFACE USE AREA		±12.769

- NOTES:**
- Fill quantity includes 10% for compaction.
 - Calculations based on 6" of topsoil stripping.
 - Cut/Fill slopes 3:1 (Typ. except where noted).



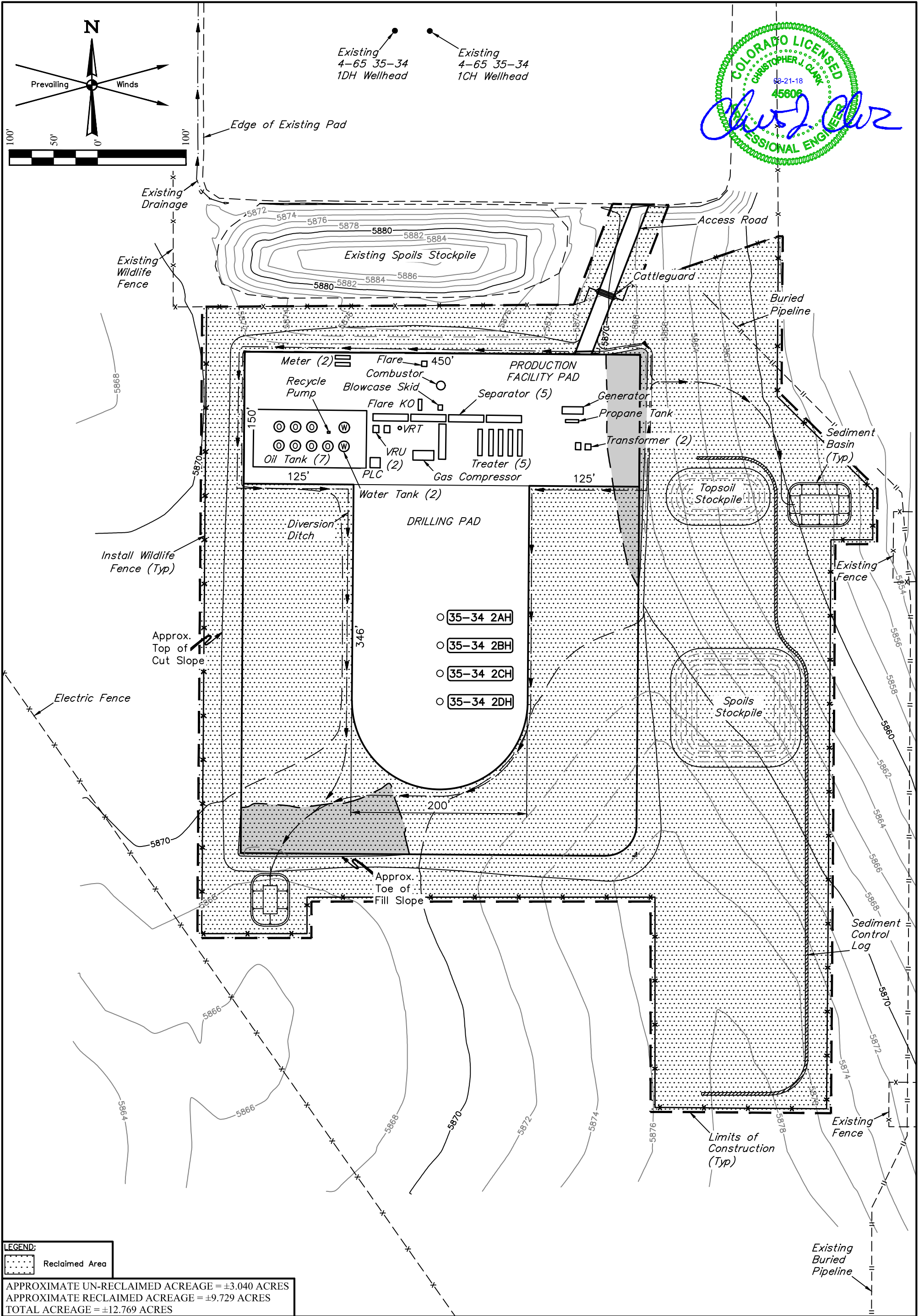
UELS, LLC
Corporate Office * 85 South 200 East
Vernal, UT 84078 * (435) 789-1017

ConocoPhillips Company

STATE BIERSTADT #4-65 35-34 2AH, 2BH, 2CH & 2DH
SE 1/4 NE 1/4, SECTION 35, T4S, R65W, 6th P.M.
ARAPAHOE COUNTY, COLORADO

SURVEYED BY	GREG WEIMER, O.R.	02-27-18	SCALE
DRAWN BY	K.B.	03-06-18	AS SHOWN

CONSTRUCTION LAYOUT CROSS SECTIONS **FIGURE #2**



LEGEND:
Reclaimed Area

APPROXIMATE UN-RECLAIMED ACREAGE = ±3.040 ACRES
APPROXIMATE RECLAIMED ACREAGE = ±9.729 ACRES
TOTAL ACREAGE = ±12.769 ACRES

NOTES:
• Contours shown at 2' intervals.

ConocoPhillips Company

STATE BIERSTADT #4-65 35-34 2AH, 2BH, 2CH & 2DH
SE 1/4 NE 1/4, SECTION 35, T4S, R65W, 6th P.M.
ARAPAHOE COUNTY, COLORADO

SURVEYED BY	GREG WEIMER, O.R.	02-27-18	SCALE
DRAWN BY	K.B.	03-06-18	1" = 100'
INTERIM RECLAMATION PLAN			FIGURE #5



UELS, LLC
Corporate Office * 85 South 200 East
Vernal, UT 84078 * (435) 789-1017