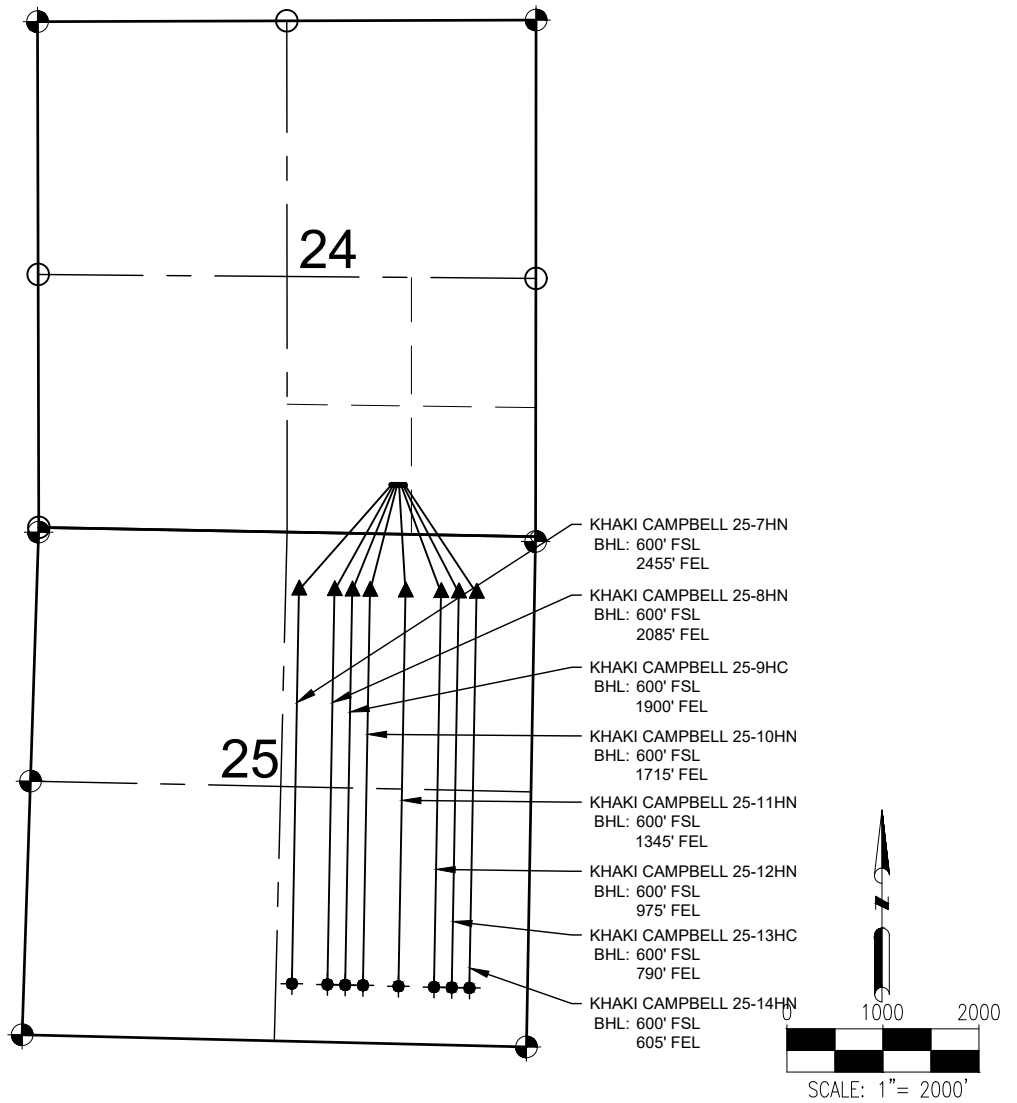


KHAKI CAMPBELL EAST PAD MULTI-WELL PLAN



LEGEND

- = EXISTING MONUMENT ▲ = BOTTOM HOLE
- = CALCULATED POSITION ▲ = LANDING POINT
- = PROPOSED WELL BHL = BOTTOM HOLE LOCATION
- ◆ = EXISTING WELL

NOTES:

1. THIS FIELD SURVEY CONFORMS TO THE MINIMUM STANDARDS SET BY THE C.O.G.C.C., RULE NO. 215
2. ALL DISTANCES AND BEARINGS SHOWN HEREON ARE GROUND VALUES AS GPS MEASURED IN THE FIELD, WITH TIES TO WELLS MEASURED PERPENDICULAR TO SECTION LINES. THIS LOW DISTORTION PROJECTION (LDP) IS BASED ON THE NORTH AMERICAN DATUM OF 1983, U.S. SURVEY FOOT WITH A LATITUDE ORIGIN OF 40.654245°N, A CENTRAL MERIDIAN LONGITUDE OF 104.315474°W, AND A SCALE FACTOR ON THE CENTRAL MERIDIAN OF 1.000233 (EXACT). THE LDP BASIS OF BEARINGS IS GEODETIC NORTH.
3. FIELD VERIFICATION OF MONUMENTS COMPLETED WITHIN 1 YEAR OF SIGNATURE DATE.

NOTES:

- KHAKI CAMPBELL 25-7HN TO BE AT 512' FSL & 1502' FEL.
BOTTOM HOLE AT 600' FSL & 2455' FEL, SEC. 25.
- KHAKI CAMPBELL 25-8HN TO BE AT 512' FSL & 1482' FEL.
BOTTOM HOLE AT 600' FSL & 2085' FEL, SEC. 25.
- KHAKI CAMPBELL 25-9HC TO BE AT 512' FSL & 1462' FEL.
BOTTOM HOLE AT 600' FSL & 1900' FEL, SEC. 25.
- KHAKI CAMPBELL 25-10HN TO BE AT 512' FSL & 1442' FEL.
BOTTOM HOLE AT 600' FSL & 1715' FEL, SEC. 25.
- KHAKI CAMPBELL 25-11HN TO BE AT 512' FSL & 1422' FEL.
BOTTOM HOLE AT 600' FSL & 1345' FEL, SEC. 25.
- KHAKI CAMPBELL 25-12HN TO BE AT 512' FSL & 1402' FEL.
BOTTOM HOLE AT 600' FSL & 975' FEL, SEC. 25.
- KHAKI CAMPBELL 25-13HC TO BE AT 512' FSL & 1382' FEL.
BOTTOM HOLE AT 600' FSL & 790' FEL, SEC. 25.
- KHAKI CAMPBELL 25-14HN TO BE AT 512' FSL & 1362' FEL.
BOTTOM HOLE AT 600' FSL & 605' FEL, SEC. 25.



FIELD DATE:
05-07-18

DRAWING DATE:
05-15-18

BY:
SJH

CHECKED:
IJM

SITE NAME:
KHAKI CAMPBELL EAST PAD

SURFACE LOCATION:
**SW 1/4 SW 1/4 SEC. 24 T8N, R62W, 6TH P.M.
WELD COUNTY, COLORADO**

