



Sec. 33

Sec. 34

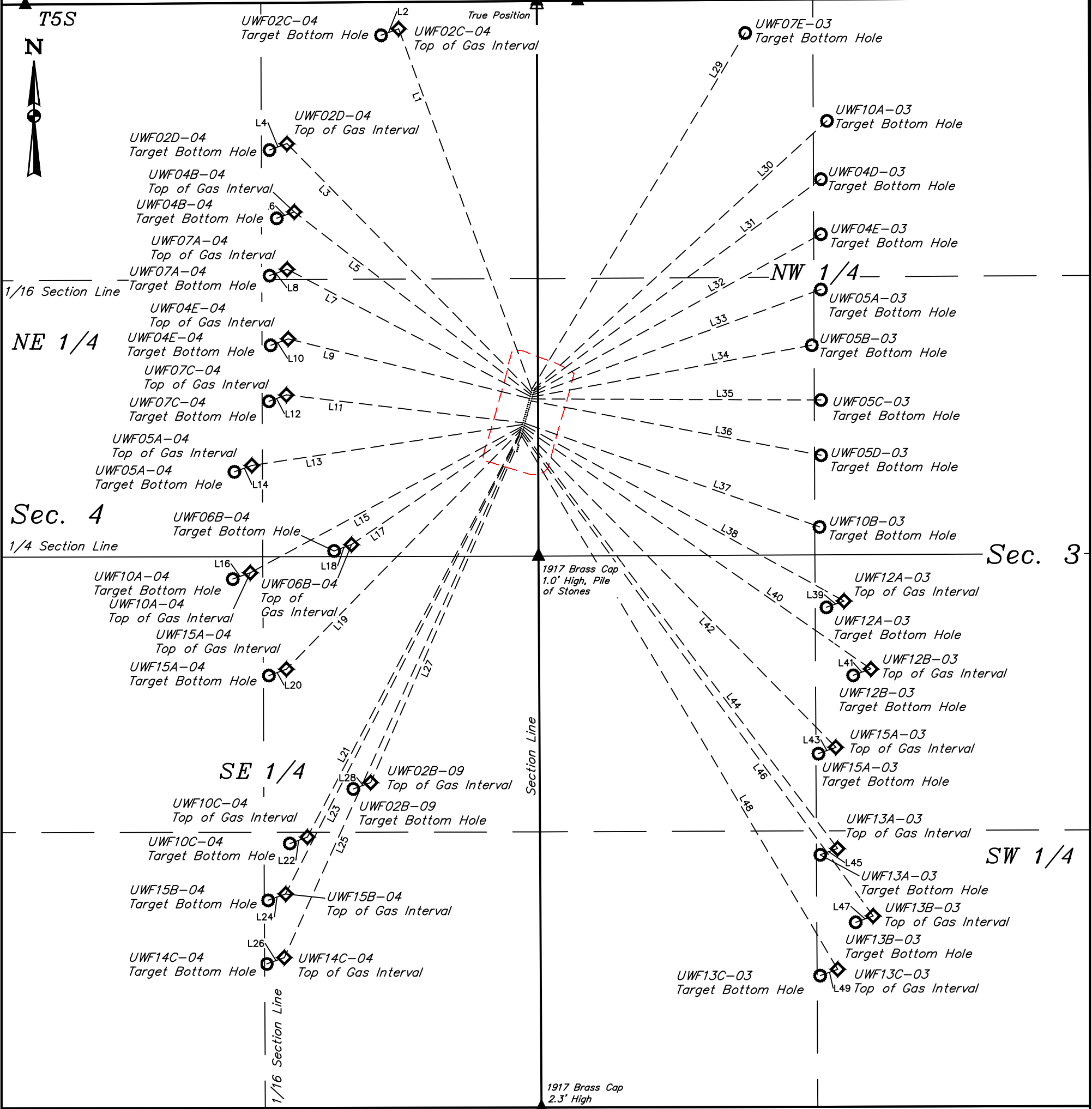


S 1/4 Cor. Sec. 33  
1970 Brass Cap  
0.3' High, Fence Cor.

T4S Section Line

C.C. 1917 Brass Cap,  
0.5' High, Pile of  
Stones, Fence

SE Cor. Sec. 33  
1953 Brass Cap  
0.2' High, Pile  
of Stones, Fence



LINE TABLE			LINE TABLE			LINE TABLE			LINE TABLE			LINE TABLE		
LINE	DIRECTION	LENGTH	LINE	DIRECTION	LENGTH	LINE	DIRECTION	LENGTH	LINE	DIRECTION	LENGTH	LINE	DIRECTION	LENGTH
L1	N20°13'06"W	1840.79'	L11	N83°16'13"W	1136.84'	L21	S27°43'30"W	2183.48'	L31	N53°35'16"E	1704.97'	L41	S70°00'07"W	89.38'
L2	S70°00'02"W	89.37'	L12	S70°00'12"W	88.81'	L22	S70°00'10"W	88.80'	L32	N61°06'10"E	1569.77'	L42	S44°30'42"E	2131.61'
L3	N44°27'51"W	1665.40'	L13	S81°24'09"W	1305.91'	L23	S26°57'59"W	2462.26'	L33	N69°54'12"E	1466.29'	L43	S70°00'06"W	88.80'
L4	S69°59'57"W	89.17'	L14	S69°59'56"W	89.05'	L24	S70°00'06"W	88.78'	L34	N79°31'04"E	1359.02'	L44	S37°02'59"E	2498.68'
L5	N52°20'01"W	1426.89'	L15	S61°41'59"W	1472.92'	L25	S24°14'15"W	2729.56'	L35	S89°47'51"E	1382.85'	L45	S70°00'04"W	87.80'
L6	S69°59'54"W	89.09'	L16	S70°00'04"W	89.32'	L26	S69°59'55"W	88.80'	L36	S79°22'47"E	1410.16'	L46	S36°02'35"E	2852.55'
L7	N62°22'34"W	1310.13'	L17	S55°38'33"W	981.12'	L27	S23°28'31"W	1798.99'	L37	S70°37'38"E	1492.94'	L47	S70°00'15"W	89.01'
L8	S70°00'04"W	89.07'	L18	S70°00'08"W	88.81'	L28	S69°59'55"W	88.81'	L38	S61°12'26"E	1742.89'	L48	S30°38'04"E	2965.73'
L9	N76°07'34"W	1187.29'	L19	S44°27'49"W	1596.98'	L29	N30°54'23"E	1979.48'	L39	S70°00'03"W	89.15'	L49	S70°00'05"W	88.82'
L10	S70°00'15"W	89.22'	L20	S69°59'52"W	89.01'	L30	N47°29'10"E	1896.29'	L40	S55°08'22"E	2021.35'			

REV: 3 05-29-18 T.S. (BHL CHANGES & ADD TGI)

NOTES:

Caerus Oil and Gas LLC

WELL PAD H04-596  
SE 1/4 NE 1/4, SECTION 4, T5S, R96W, 6th P.M.  
GARFIELD COUNTY, COLORADO



UELS, LLC  
Corporate Office \* 85 South 200 East  
Vernal, UT 84078 \* (435) 789-1017

SURVEYED BY	BART HUNTING, J.L.	10-24-17	SCALE
DRAWN BY	M.D.	12-04-17	1" = 500'
TARGET BOTTOM HOLE DRAWING		FIGURE #5A	